

NEW MEXICO OIL CONSERVATION COMMISSION
WELL LOCATION AND ACREAGE DEDICATION PLAT

Form C-101
Supersedes C-128
Effective 1-1-85

All distances must be from the outer boundaries of the Section

Owner HNG OIL COMPANY			Lease GRYNBERG FED. COM. #E			Well No. 1		
Section G	Section 11	Township 25 South	Range 26 East	County Eddy				

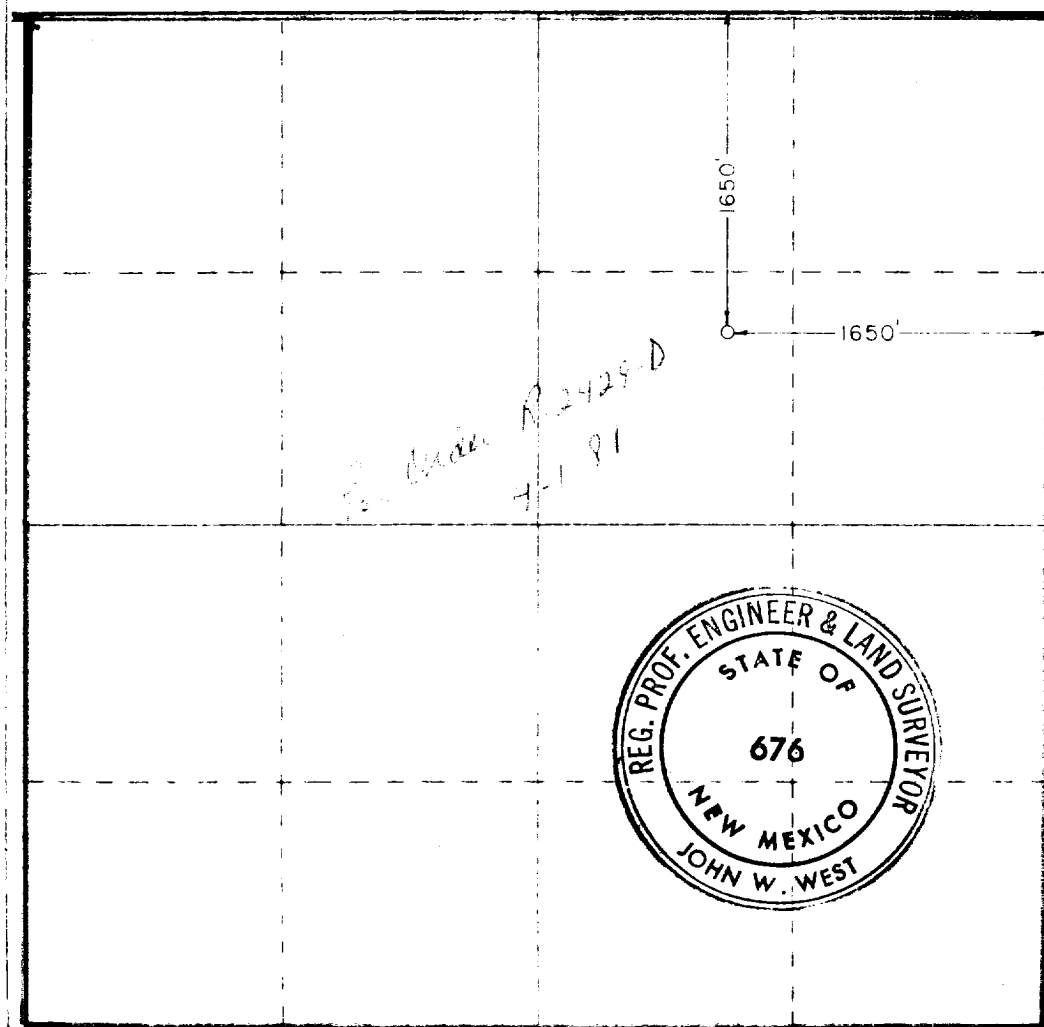
Actual Footage Location of Well:		1650 feet from the North line and 1650 feet from the East line	
Ground Level Elev. 3397.2	Predominant Formation Pennsylvanian	Foot White City	Estimated Acreage 640

- 1 Outline the acreage dedicated to the subject well by colored pencil or hatchure marks on the plat below
- 2 If more than one lease is dedicated to the well, outline each and identify the ownership thereof both as to working interest and royalty.
- 3 If more than one lease of different ownership is dedicated to the well, have the interests of all owners been consolidated by communitization, unitization, force-pooling, etc?

☐ Yes ☐ No If answer is "yes," type of consolidation _____

If answer is "no," list the owners and tract descriptions which have actually been consolidated (Use reverse side of this form if necessary) _____

No allowable will be assigned to the well until all interests have been consolidated (by communitization, unitization, forced-pooling, or otherwise) or until a non-standard unit, eliminating such interests, has been approved by the Commission.



CERTIFICATION

I hereby certify that the information contained herein is true and complete to the best of my knowledge and belief.

Betty Gildon

Name
Betty Gildon

Position
Regulatory Analyst

Company
HNG OIL COMPANY

Date
September 29, 1981

I hereby certify that the well location shown on this plat was plotted from field notes of actual surveys made by me or under my supervision and that the same is true and correct to the best of my knowledge and belief.

January 31, 1977

Date surveyed

Registered Professional Engineer and Land Surveyor

John W. West

Certificate No.

676

330 660 990 1320 1650 1980 2310 2640 2970 3300 3630 3960