

UNITED STATES  
DEPARTMENT OF THE INTERIOR  
GEOLOGICAL SURVEYSUBMIT IN TRIPLICATE  
Other instructions on  
reverse sForm approved.  
Budget Bureau No. 42-R1425.

## APPLICATION FOR PERMIT TO DRILL, DEEPEN, OR PLUG BACK

## 1a. TYPE OF WORK

DRILL ☒DEEPEN ☐PLUG BACK ☐

## b. TYPE OF WELL

OIL  
WELL ☒GAS  
WELL ☐OTHER ☐SINGLE  
ZONE ☐MULTIPLE  
ZONE ☐

## 2. NAME OF OPERATOR

CURTIS HANKAMER

O. C. C.

## 3. ADDRESS OF OPERATOR

ARTESIA, OFFICE

9039 Katy Freeway Suite 430 Houston, Texas 77024

## 4. LOCATION OF WELL (Report location clearly and in accordance with any State requirements.)\*

At surface

660' FNL &amp; 660' FEL Sec. 5, T-26-S, R-30-E

At proposed prod. zone

Eddy County, New Mexico

Same

## 14. DISTANCE IN MILES AND DIRECTION FROM NEAREST TOWN OR POST OFFICE\*

13.9 miles Southeast of Malaga, New Mexico

## 15. DISTANCE FROM PROPOSED\*

LOCATION TO NEAREST  
PROPERTY OR LEASE LINE, FT.  
(Also to nearest drlg. unit line, if any)

660'

## 18. DISTANCE FROM PROPOSED LOCATION\*

TO NEAREST WELL, DRILLING, COMPLETED,  
OR APPLIED FOR, ON THIS LEASE, FT.

none

## 21. ELEVATIONS (Show whether DF, RT, GR, etc.)

3160' gl.

## 23. PROPOSED CASING AND CEMENTING PROGRAM

SIZE OF HOLE	SIZE OF CASING	WEIGHT PER FOOT	SETTING DEPTH	QUANTITY OF CEMENT
11"	8 5/8"	24#	375'	Circulate
7 7/8"	4 1/2"	10.5#	Total Depth	150 SX

Propose to drill 11" hole to 375', set 8 5/8" surface casing, circulate cement. Wait on cement at least 18 hours and then drill 7 7/8" hole to approximately 5600' into the Cherry Canyon of the Delaware formation. If oil shows are encountered, run 4 1/2" casing through the pay zone, cement and selectively perforate. We plan to use native mud to 3500' and sufficient mud for sample examination to total depth (approx 9.5# and 36 vis.)

RECEIVED

JUL 15 1977

U. S. GEOLOGICAL SURVEY  
ARTESIA, NEW MEXICO

IN ABOVE SPACE DESCRIBE PROPOSED PROGRAM: If proposal is to deepen or plug back, give data on present productive zone and proposed new productive zone. If proposal is to drill or deepen directionally, give pertinent data on subsurface locations and measured and true vertical depths. Give blowout preventer program, if any.

24.

SIGNED

*Robert W. Becker*

TITLE

*Agent*

DATE

*7-14-77*

(This space for Federal or State office use)

PERMIT NO.

APPROVAL DATE

JUL 23 1977

JUL 25 1977

APPROVED BY

TITLE

DISTRICT ENGINEER

CONDITIONS OF APPROVAL, IF ANY:

DATE

JUL 25 1977

\*See Instructions On Reverse Side

NE EXICO OIL CONSERVATION COMMISSIC  
WELL LOCATION AND ACREAGE DEDICATION PLAT

Form C-102  
Supersedes C-128  
Effective 1-1-65

All distances must be from the outer boundaries of the Section.

Operator <b>Curtis Hankamer</b>		Lease <b>Hankamer-Federal</b>		Well No. <b>1</b>	
Unit Letter <b>A</b>	Section <b>5</b>	Township <b>26S</b>	Range <b>30 E</b>	County <b>Eddy</b>	
Actual Footage Location of Well: <b>660</b> feet from the <b>North</b> line and <b>660</b> feet from the <b>East</b> line					
Ground Level Elev: <b>3160</b>	Producing Formation <b>Delaware Sand</b>		Pool <b>Wildcat</b>	Dedicated Acreage: <b>80 40</b> Acres	

1. Outline the acreage dedicated to the subject well by colored pencil or hachure marks on the plat below.
2. If more than one lease is dedicated to the well, outline each and identify the ownership thereof (both as to working interest and royalty).
3. If more than one lease of different ownership is dedicated to the well, have the interests of all owners been consolidated by communitization, unitization, force-pooling, etc?

☐ Yes ☐ No If answer is "yes," type of consolidation \_\_\_\_\_

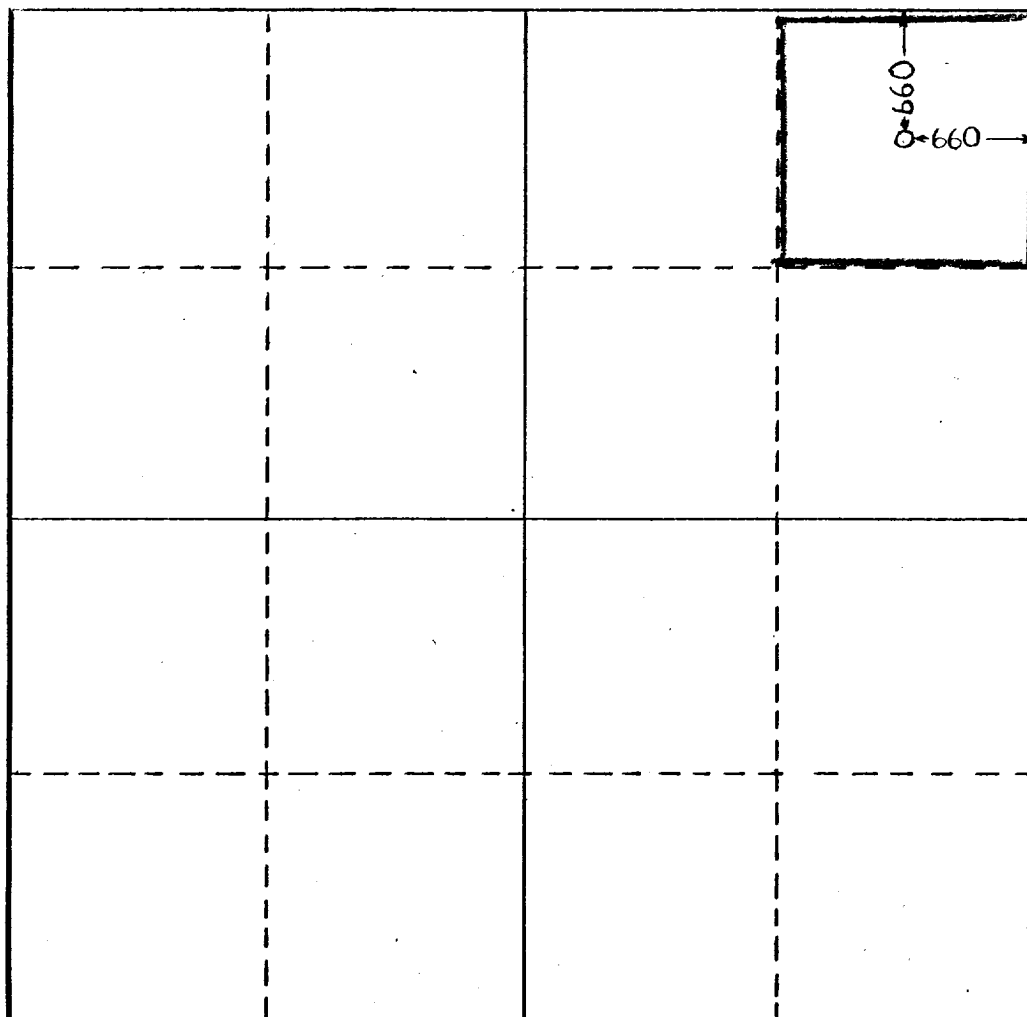
If answer is "no," list the owners and tract descriptions which have actually been consolidated (use reverse side of this form if necessary.) \_\_\_\_\_

No allowable will be assigned to the well until all interests have been consolidated (by communitization, unitization, forced-pooling, or otherwise) or until a non-standard unit, eliminating such interests, has been approved by the Commission.

RECEIVED

JUL 15 1977

U.S. GEOLOGICAL SURVEY  
ARTESIA, NEW MEXICO



CERTIFICATION

I hereby certify that the information contained herein is true and complete to the best of my knowledge and belief.

Name *Robert W. Bicker*  
Position *Agent*  
Company *Curtis Hankamer*  
Date *7-14-77*

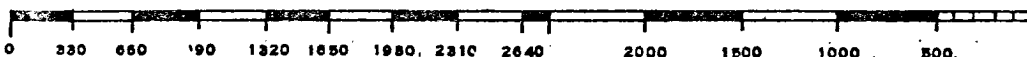
I hereby certify that the well location shown on this plat was plotted from field notes of actual surveys made by me or under my supervision, and that the same is true and correct to the best of my knowledge and belief.

July 12, 1977

Date Surveyed *John L. Lewis*  
Registered Professional Engineer and/or Land Surveyor

N. M. 220

Certificate No.



Shaeffer Double BOP 900 Series, 3,000 WP

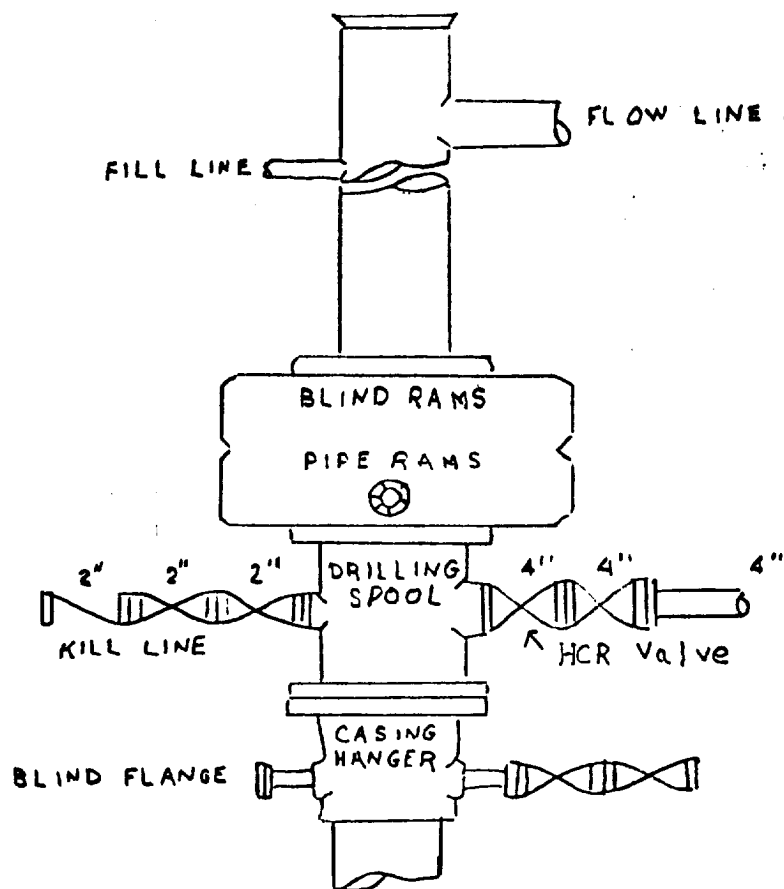
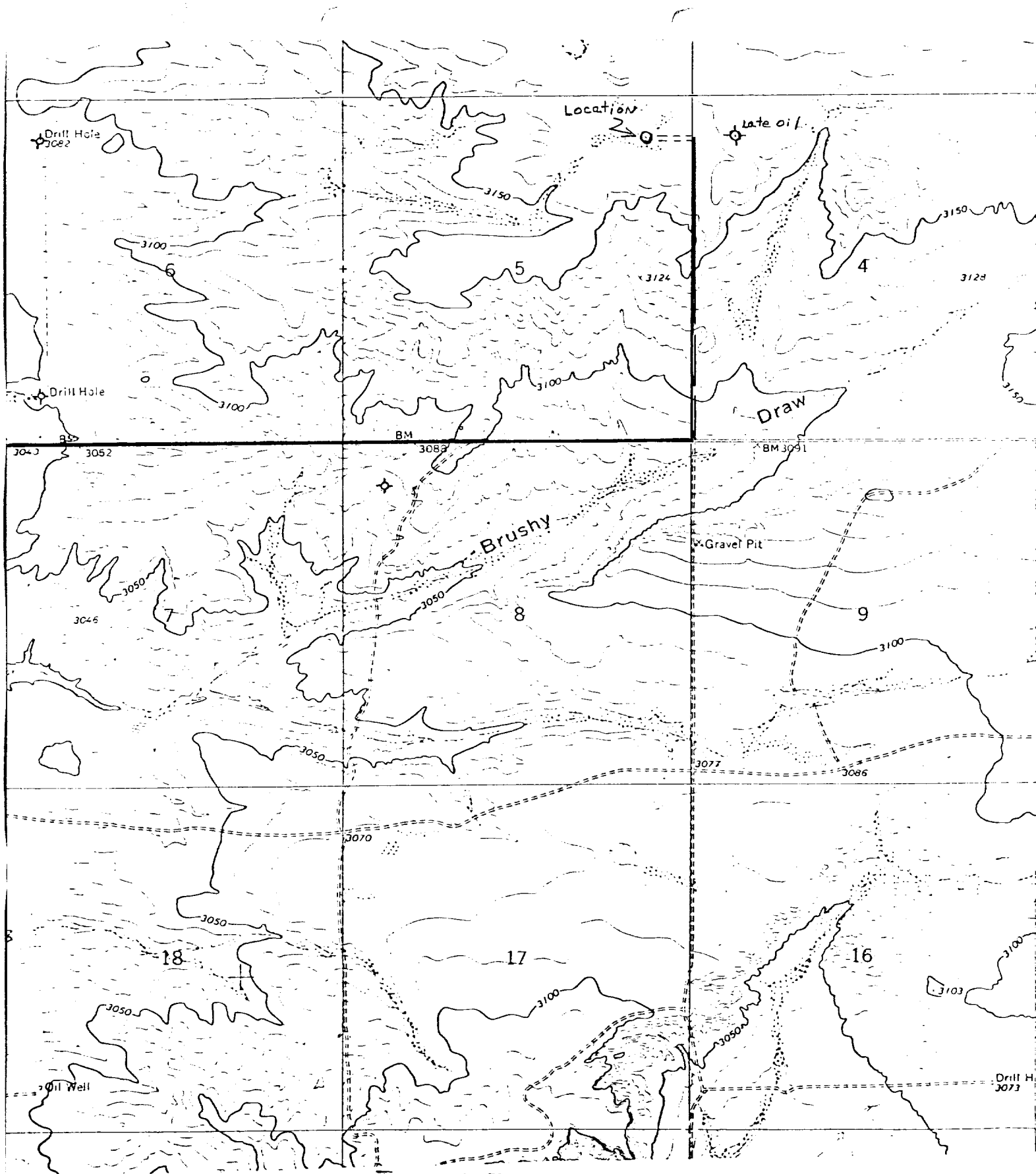


Exhibit "D"  
BOP Sketch

Curtis Hankamer  
Well # 1 Hankamer Federal  
660' F N & E lines Sec. 5, T 26 S, R 30 E  
Eddy County, New Mexico



Town 26S R30E  
Eddy Co New Mexico

==== Access Road  
 ———— Parish Road  
 ———— County Road

Exhibit "A"