

N. MEXICO OIL CONSERVATION COMMISS.
WELL LOCATION AND ACREAGE DEDICATION PLAT

Form C-102
 Supersedes C-128
 Effective 1-1-65

All distances must be from the outer boundaries of the Section

Operator Perry R. Bass			Lease Poker Lake		Well No. 50
Tract Letter B	Section 4	Township 25 South	Range 31 East	County Eddy	
A. Well Footage Location of Well:					
660	feet from the	North	line and	1980	feet from the East line
Ground Level Elev. 3436.8	Producing Formation MORROW		Pool WILDCAT		Dedicated Acreage 320 319.92 Acres

1. Outline the acreage dedicated to the subject well by colored pencil or hachure marks on the plat below.
2. If more than one lease is dedicated to the well, outline each and identify the ownership thereof (both as to working interest and royalty).
3. If more than one lease of different ownership is dedicated to the well, have the interests of all owners been consolidated by communitization, unitization, force-pooling, etc?

☒ Yes ☐ No If answer is "yes," type of consolidation Unit

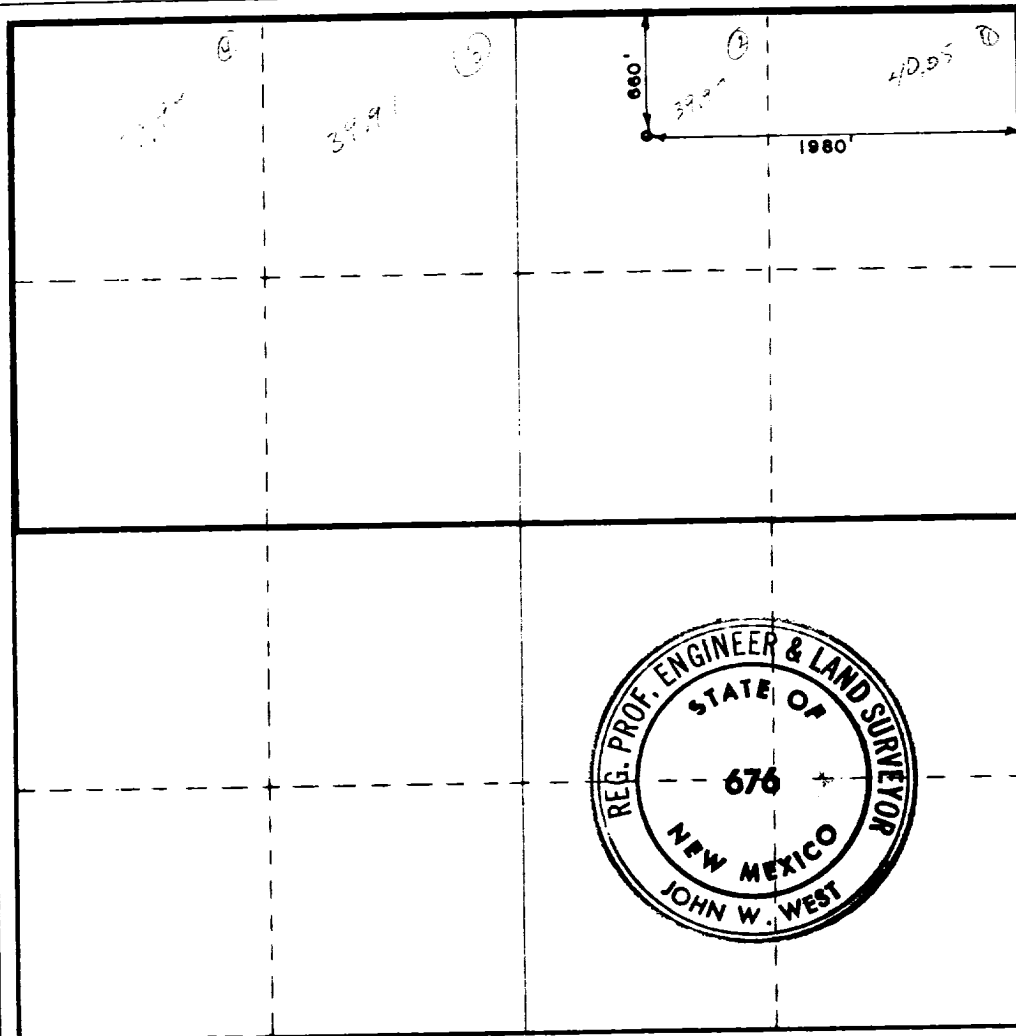
If answer is "no," list the owners and tract descriptions which have actually been consolidated. (Use reverse side of this form if necessary.) _____

No allowable will be assigned to the well until all interests have been consolidated (by communitization, unitization, forced-pooling, or otherwise) or until a non-standard unit, eliminating such interests, has been approved by the Commission.

RECEIVED

JUN 13 1980

**U.S. GEOLOGICAL SURVEY
 ARTESIA, NEW MEXICO**



CERTIFICATION

I hereby certify that the information contained herein is true and complete to the best of my knowledge and belief

Mike Waygood

MIKE WAYGOOD

Position

ENGINEERING ASSISTANT

Company

BASS ENTERPRISES PRODUCTION CO.

Date

June 12, 1980

I hereby certify that the well location shown on this plat was plotted from field notes of actual surveys made by me or under my supervision, and that the same is true and correct to the best of my knowledge and belief.

Date Surveyed

6-7-1980

Registered Professional Engineer and/or Land Surveyor

John W. West
 Certificate No. **JOHN W. WEST 676**
PATRICK A. ROMERO 6485
Ronald J. Eidan 3239

