

NEW MEXICO OIL CONSERVATION COMMISSION  
WE. LOCATION AND ACREAGE DEDICATION PLAT

Form O-102  
Supersedes O-128  
Effective 1-1-65

All distances must be from the outer boundaries of the Section

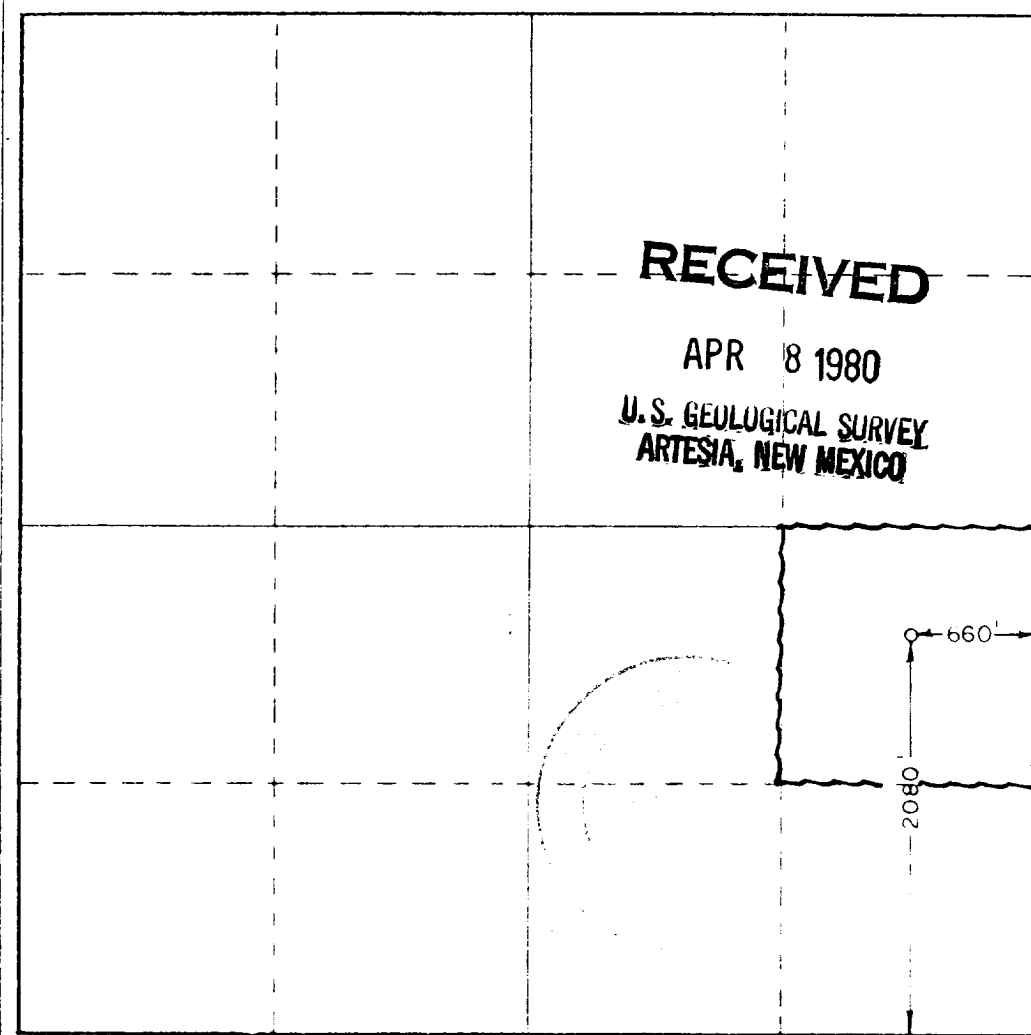
Operator AMOCO Production Co.			Lease Federal AZ		Well No. 1
Tract Letter I	Section 29	Township 26 South	Range 30 East	County Eddy	
Actual Footage Location of Well: 2080 feet from the South line and 660 feet from the East line					
Ground Level Elev. 2980.6	Producing Formation Delaware		Pool Name <del>Brushy Draw</del> Delaware	Estimated Acreage 40	

1. Outline the acreage dedicated to the subject well by colored pencil or hatchure marks on the plat below.
2. If more than one lease is dedicated to the well, outline each and identify the ownership thereof (both as to working interest and royalty).
3. If more than one lease of different ownership is dedicated to the well, have the interests of all owners been consolidated by communitization, unitization, force-pooling, etc?

☐ Yes ☐ No If answer is "yes," type of consolidation \_\_\_\_\_

If answer is "no," list the owners and tract descriptions which have actually been consolidated. (Use reverse side of this form if necessary.) \_\_\_\_\_

No allowable will be assigned to the well until all interests have been consolidated (by communitization, unitization, forced-pooling, or otherwise) or until a non-standard unit, eliminating such interests, has been approved by the Commission.



CERTIFICATION

I hereby certify that the information contained herein is true and complete to the best of my knowledge and belief

*Bob Davis*

Admin. Analyst

Amoco Production Company

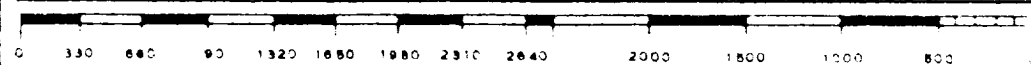
4-3-80

I hereby certify that the well location shown on this plat was plotted from field notes of actual surveys made by me or under my supervision, and that the same is true and correct to the best of my knowledge and belief

March 17, 1980

*Patrick A. Romero*

Certification by: JOHN W. WEST 878  
PATRICK A. ROMERO 6683  
Ronald J. Edison 3239





N.M.O.C.D. COPY

RECEIVED

# United States Department of the Interior

MAY 15 1980

GEOLOGICAL SURVEY

P. O. Drawer U  
Artesia, New Mexico 88210

O. C. D.  
ARTESIA, OFFICE

May 13, 1980

Amoco Production Company  
P. O. Box 68  
Hobbs, New Mexico 88240

AMOCO PRODUCTION COMPANY  
Fed "AZ" No. 1  
2080 FSL 660 FEL Sec. 29 T.26S R.30E  
Eddy County Lease No. NM-20370

Gentlemen:

Above Data Required on Well Sign

Your APPLICATION FOR PERMIT TO DRILL the above-described well to a depth of 3,500 feet to test the Delaware formation is hereby approved subject to compliance with the OIL AND GAS OPERATING REGULATIONS (30 CFR 221) and the following conditions:

1. Drilling operations authorized are subject to compliance with the GENERAL REQUIREMENTS FOR OIL AND GAS OPERATIONS ON FEDERAL LEASES, dated July 1, 1978.
2. Prior to commencing construction of road, pad, or other associated developments, operator will provide the dirt contractor with a copy of the SURFACE USE PLAN and this approval including the GENERAL REQUIREMENTS.
3. All access roads will be limited to a 12 foot wide driving surface, excluding turnarounds. Surface disturbance associated with road construction will be limited to 20 feet in width.
4. Submit a Daily Report of Operations from spud date until the Well Completion Report (form 9-330) is filed. The progress report should be not less than 8" x 5" in size and each page should identify the well.
5. All permanent above-ground structures and equipment shall be painted in accordance with the attached Painting Requirements. The color used should simulate Sandstone Brown (Federal Standard No. 595A, color 20318 or 30318) or Amoco's standard gray/black-orange color.
6. Notify the Survey by telephone 24 hours prior to spudding well.
7. Cement behind the 9-5/8" casing must be circulated.
8. Special Stipulations: Access road will be constructed as illustrated on attached map.

9. Please have anyone contacting the Survey in regard to this well to identify the well with all of the information required above for the well sign.

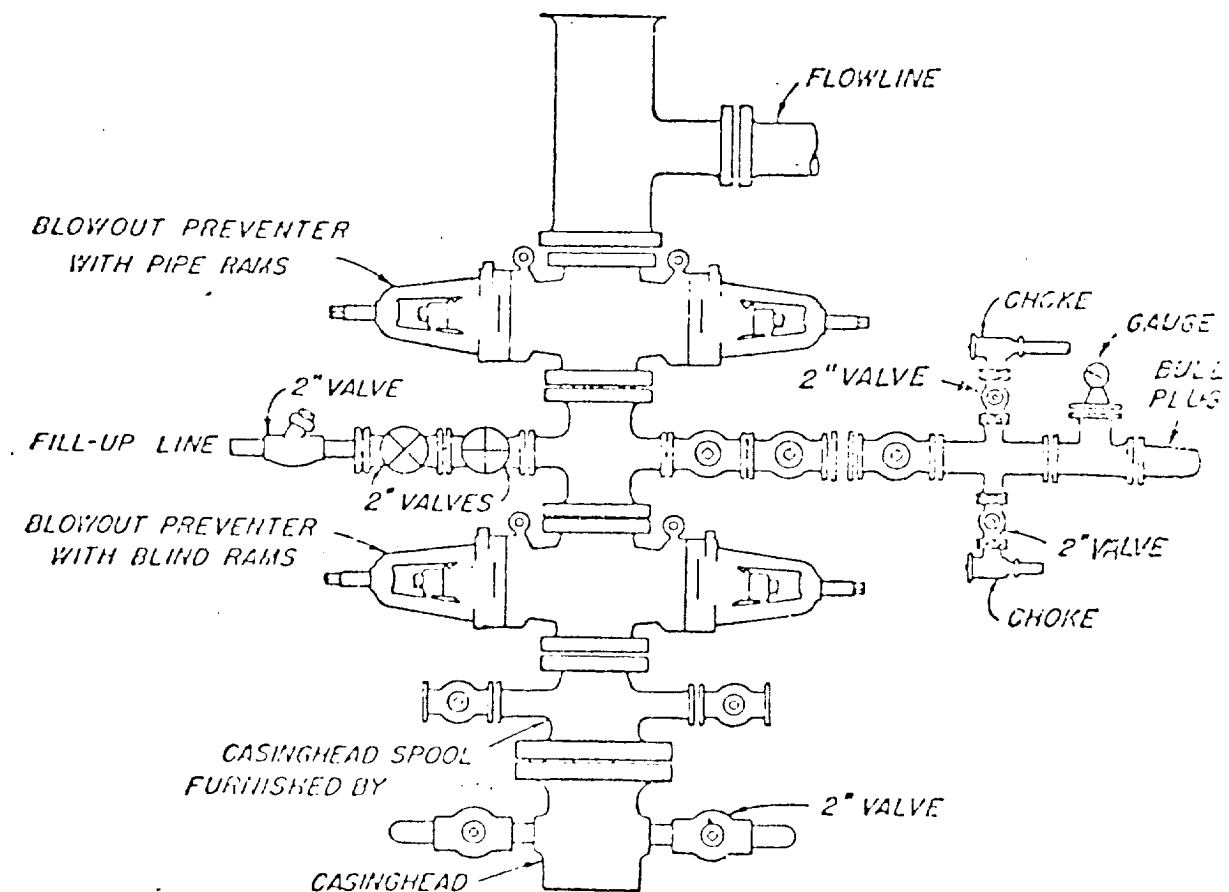
Sincerely yours,

(Orig. Sgd.) GEORGE H. STEWART

George H. Stewart  
Acting District Engineer

ATTACHMENT "B"  
NOTES

1. Blow-out preventers and master valve to be fluid operated and oil fittings must be in good condition, 3,000# W.P. (6,000 p.s.i. test), minimum.
2. Equipment through which bit must pass shall be as large as the inside diameter of the casing that is being drilled through.
3. Nipple above blow-out preventer shall be same size as casing being drilled through.
4. Kelly cock required, 3,000# W.P. (6,000 p.s.i. test) minimum.
5. OMSCO or comparable safety valve must be available on rig floor at all times with proper connection or sub, 3,000# W.P. (6,000 p.s.i. test), minimum.
6. Blow-out preventers and master valve while drilling intermediate hole to 6000' may be 2,000# W.P. (4,000 p.s.i. test), minimum.
7. Choke assembly, beyond second valve from cross, may be positioned (Optional) outside of derrick foundation.
8. Spool or cross may be eliminated if connections are available in the lower part of the blow-out preventer body.
9. Plug valves - gate valves are optional. Valves shown as 2" are minimum size.
10. Casing head and casing head spool, including attached valves, to be furnished by Amoco.
11. Rams in preventers will be installed as follows:  
 When drilling, use:  
 Top Preventer - Drill pipe rams  
 Bottom Preventer - Blind rams or master valve  
 When running casing, use:  
 Top Preventer - Casing rams  
 Bottom Preventer - Blind rams or master valve



### BLOWOUT PREVENTER HOOK-UP

AMOCO PRODUCTION COMPANY

### EXHIBIT D-1 MODIFIED

JUNE 1, 1962

Attachment to "Application for Permit to Drill", Form 9-331 C

Federal AZ #1  
2080' FSL & 660' FEL, Sec. 29, T-26-S R-30-E  
Eddy County, NM

1. Location

See attached Form C-102

2. Elevation

See attached Form C-102

3. Geologic name of surface formation.

Permian

4. Type of drilling tools and associated equipment to be utilized.

See Form 9-331 C

5. Proposed drilling depth.

See Form 9-331 C

6. Estimated tops of important geologic markers.

Anhydrite 850' Delaware Sand 330'  
Delaware Lime 3300'

7. Estimated depths at which anticipated water, oil, gas or other mineral-bearing formations are expected to be encountered.

Delaware Sand 3330'

8. Proposed casing program, including size, grade, and weight of each string and whether it is new or used.

<u>Depth</u>	<u>Size</u>	<u>Weight</u>	<u>Grade</u>	<u>New or Used</u>
600'	9 5/8"	40#	K-55	New
3500'	7"	20#, 23# or 26#	K-55	New

9. Proposed cementing program.

9 5/8" - Circulate to Surface

7" - Circulate to Surface

10. Blowout Preventer Program is attached.
11. Type and characteristics of the proposed circulating medium or mediums to be employed for rotary drilling, and the quantities and types of mud and weighting material to be maintained.

0-600' - Native mud and fresh water.

600'-3500' - Commercial mud and brine with minimum properties for safe hole conditions.

12. Testing, logging and coring programs to be followed with provisions made for required flexibility.

Compensated Neutron formation density

Dual laterolog w/micor SFL

13. Any anticipated abnormal pressure or temperatures expected to be encountered or potential hazards, such as hydrogen sulfide gas, along with plans for mitigating such hazards.

None Anticipated

14. Anticipated starting date and duration of operation.

5-1-80

5-25-80

15. Other facets of the proposed operation operator wishes to point out for the Geological Survey's consideration of the application.

Request exemptions from the painting stipulations of Sec. 102 (a) (8) of the "Federal Land Policy and Management Act of 1976" to paint any tanks, separators, and treaters required for the production of this well, Amoco's standard gray color. If a pumping unit is required for the continued production of this well, it will be painted black with orange safety color coding which conforms with your current painting guidelines.

T 22 S

T 23 S

T 24 S

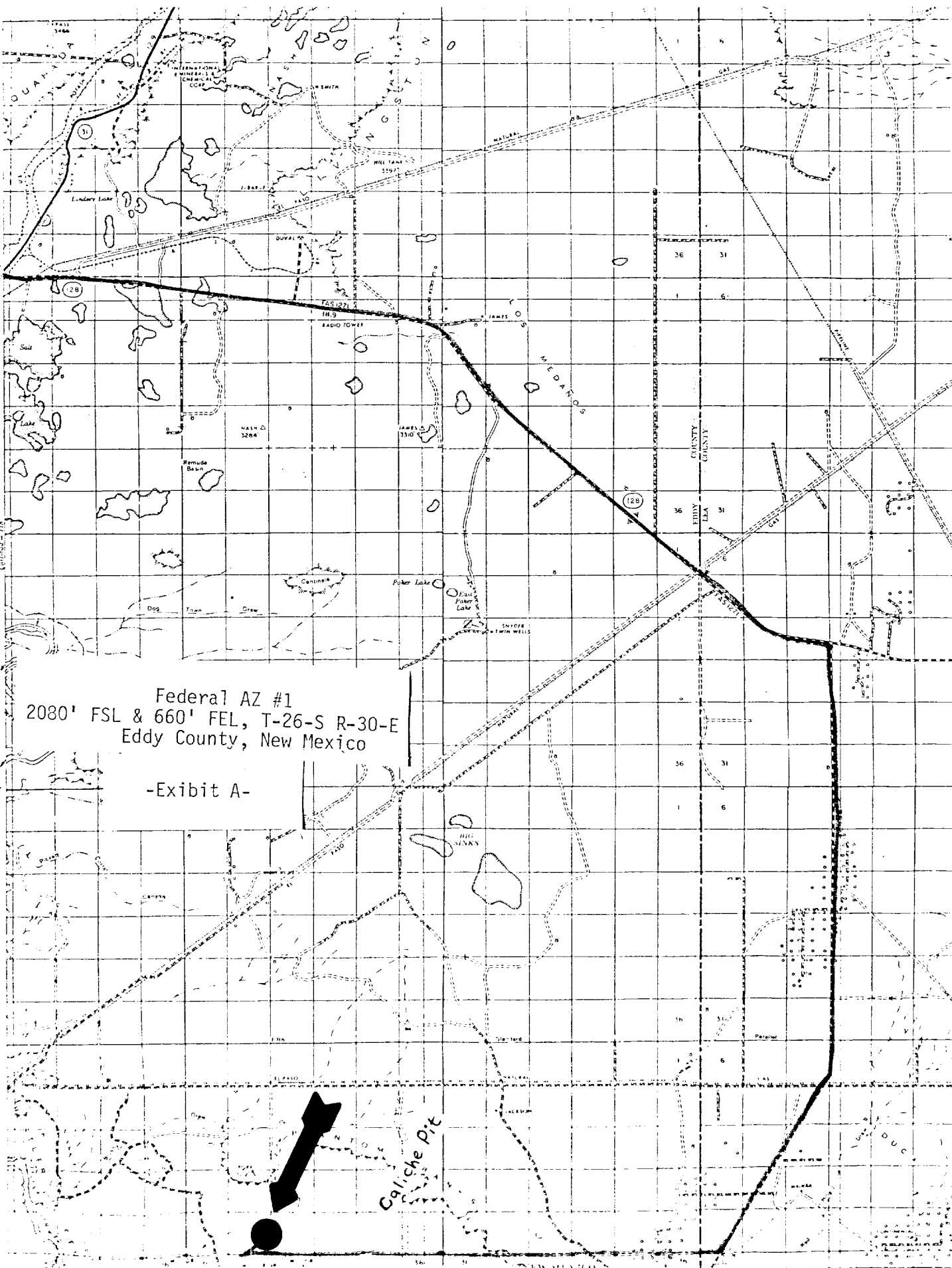
T 25 S

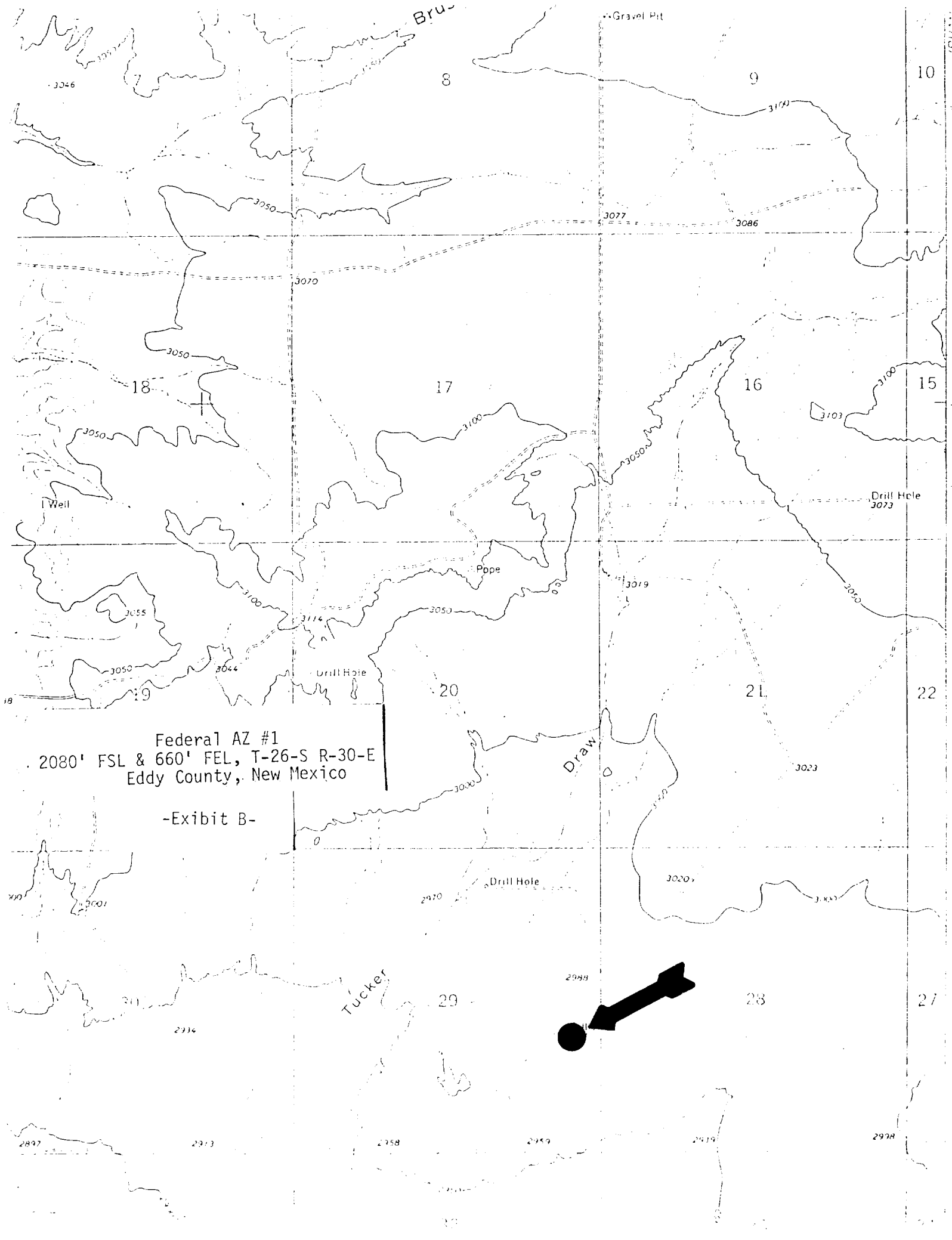
T 26 S

Federal AZ #1  
2080' FSL & 660' FEL, T-26-S R-30-E  
Eddy County, New Mexico

-Exhibit A-

Caliche Pit





Federal AZ #1  
2080' FSL & 660' FEL, T-26-S R-30-E  
Eddy County, New Mexico

-Exhibit B-