

AUG 22 1983

Operator The Superior Oil Company ✓			Lease Sotol Federal		
Unit Letter F	Section 12	Township 24S	Range 31E	County Eddy	
Well No. O. C. D. 1					
ARTESIA, OFFICE					

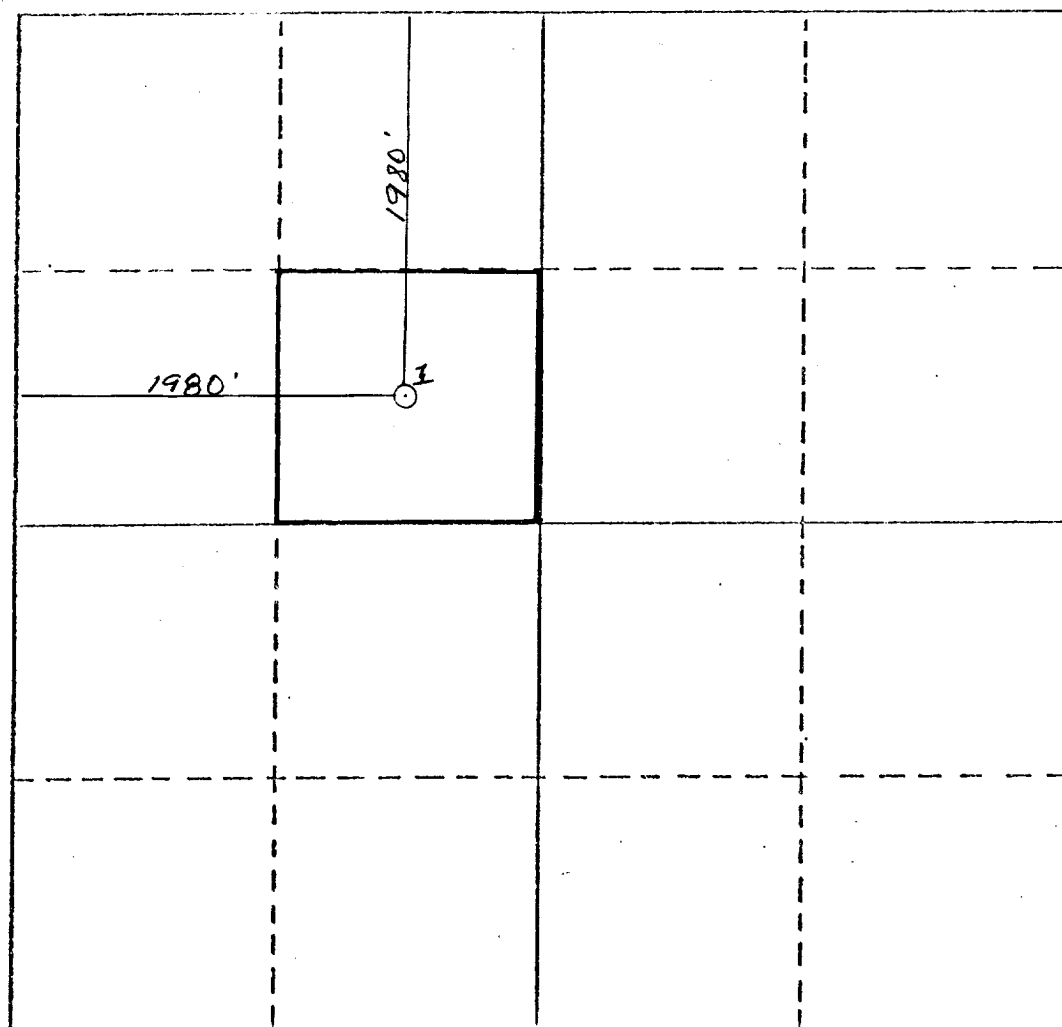
Actual Footage Location of Well:					
1980 feet from the North line and		1980 feet from the West line			
Ground Level Elev. 3531.5	Producing Formation Atoka - Bone Springs	Pool Wildcat - Bone Springs	Dedicated Acreage: 40 Acres		

1. Outline the acreage dedicated to the subject well by colored pencil or hatchure marks on the plat below.
2. If more than one lease is dedicated to the well, outline each and identify the ownership thereof (both as to working interest and royalty).
3. If more than one lease of different ownership is dedicated to the well, have the interests of all owners been consolidated by communitization, unitization, force-pooling, etc?

☐ Yes ☐ No If answer is "yes," type of consolidation _____

If answer is "no," list the owners and tract descriptions which have actually been consolidated. (Use reverse side of this form if necessary.) _____

No allowable will be assigned to the well until all interests have been consolidated (by communitization, unitization, forced-pooling, or otherwise) or until a non-standard unit, eliminating such interests, has been approved by the Division.



CERTIFICATION

I hereby certify that the information contained herein is true and complete to the best of my knowledge and belief.

[Signature]

Name

G. E. Tate

Position

Division Operations Supt.

Company

The Superior Oil Company

Date

8-18-83

I hereby certify that the well location shown on this plat was plotted from field notes of actual surveys made by me or under my supervision, and that the same is true and correct to the best of my knowledge and belief.

Date Surveyed

August 8, 1980

Registered Professional Engineer and/or Land Surveyor

Don R. Reddy

Certificate No.

NM PE & LS #5412

