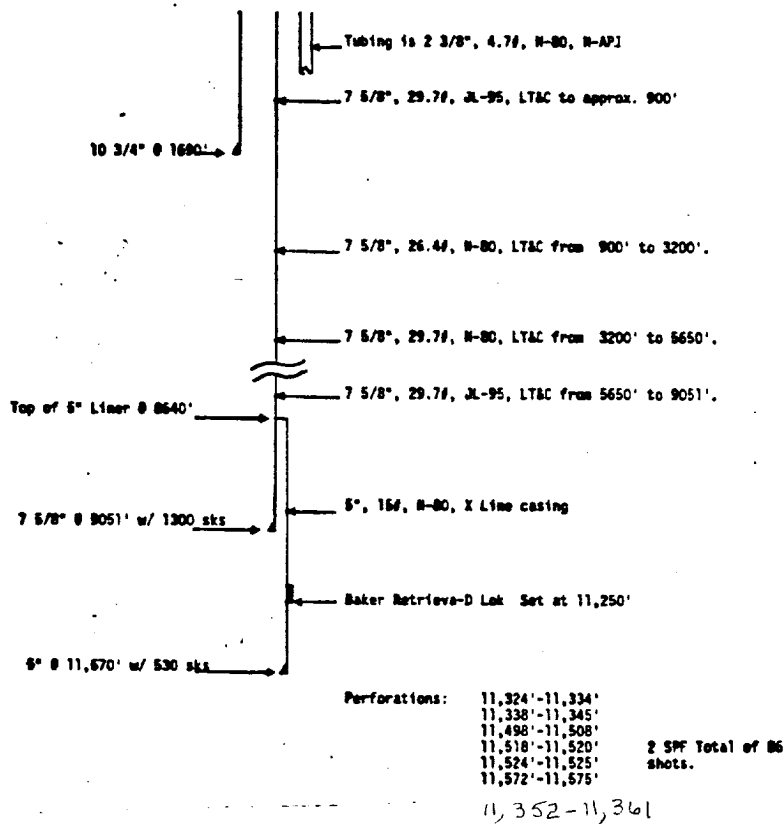


COTTONWOOD SPRINGS FEDERAL COMM. #1  
NE/4 Sec. 18, T25S, R26E  
EDDY COUNTY, NEW MEXICO

BRUSHY CANYON  
RECOMPLETION

COTTONWOOD SPRINGS FED. COMM. #1  
DATA



PROCEDURE

1. MOL and RU.
2. Load tubing and kill well with 10# brine.
3. Nipple down wellhead and NU BOP's (6" 1500 Series).
4. Sting out of Baker Retrieva-D Lok-Set packer at 11,250' and circulate hole with 10# brine.
5. TOH with 2 3/8" tubing. PU retrieving tool on 2 3/8" tubing and TIH. Release packer at 11,250' and TOH.