

UNITED STATES  
DEPARTMENT OF THE INTERIOR  
GEOLOGICAL SURVEY

SUBMIT IN TR CATE\*

NM OIL CONS. COMMISSION  
Artesia, NM 88210

Form approved.  
Budget Bureau No. 42-R1425.

RECEIVED

APPLICATION FOR PERMIT TO DRILL, DEEPEN, OR PLUG BACK

1a. TYPE OF WORK

DRILL ☐

DEEPEN ☒

PLUG BACK ☐

b. TYPE OF WELL

OIL  
WELL ☒

GAS  
WELL ☐

OTHER

SINGLE  
ZONE ☒

MULTIPLE  
ZONE ☐

2. NAME OF OPERATOR

QUANAH PETROLEUM, INC./

3. ADDRESS OF OPERATOR

14800 QUORUM DRIVE, SUITE 500, DALLAS, TEXAS 75240

4. LOCATION OF WELL (Report location clearly and in accordance with any State requirements.\*)

At surface

1980' FSL, 1980' FWL

At proposed prod. zone

14. DISTANCE IN MILES AND DIRECTION FROM NEAREST TOWN OR POST OFFICE\*

13 MILES SW of MALAGA

15. DISTANCE FROM PROPOSED\*

LOCATION TO NEAREST  
PROPERTY OR LEASE LINE, FT.  
(Also to nearest drlg. unit line, if any)

1980'

16. NO. OF ACRES IN LEASE

640

17. NO. OF ACRES ASSIGNED  
TO THIS WELL

40

18. DISTANCE FROM PROPOSED LOCATION\*  
TO NEAREST WELL, DRILLING, COMPLETED,  
OR APPLIED FOR, ON THIS LEASE, FT.

19. PROPOSED DEPTH

8150'

20. ROTARY OR CABLE TOOLS

ROTARY

21. ELEVATIONS (Show whether DF, RT, GR, etc.)

3274.3'

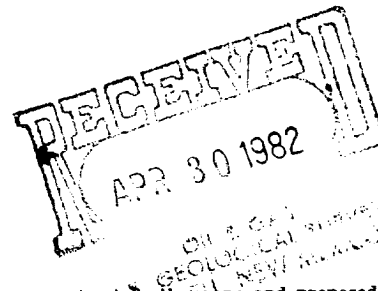
22. APPROX. DATE WORK WILL START\*

4-21-82

23. PROPOSED CASING AND CEMENTING PROGRAM

SIZE OF HOLE	SIZE OF CASING	WEIGHT PER FOOT	SETTING DEPTH	QUANTITY OF CEMENT

PROPOSE TO DEEPEN WELL TO 8150' AND PERF IN THE APPROXIMATE AREA OF 8110'. PROPOSE TO KEEP INITIAL PRODUCTION AREA ALSO. ALL PRODUCTION WILL BE IN THE BONE SPRINGS ZONE.



IN ABOVE SPACE DESCRIBE PROPOSED PROGRAM: If proposal is to deepen or plug back, give data on present productive zone and proposed new productive zone. If proposal is to drill or deepen directionally, give pertinent data on subsurface locations and measured and true vertical depths. Give blowout preventer program, if any.

24.

SIGNED

TITLE

ENGINEERING TECHNICIAN

DATE 4-22-82

(This space for Federal or State office use)

PERMIT NO.

APPROVAL DATE

APPROVED BY

TITLE

CONDITIONS OF APPROVAL, IF ANY:

APPROVED

DATE

APR 30 1982

JAMES A. GILLHAM  
DISTRICT SUPERVISOR

**XICO OIL CONSERVATION COMM'**  
**WELL LOCATION AND ACREAGE DEDICATION PLAT**

Form C-1-1  
Superior Oil Co.  
Effective 10-1-78

All distances must be from the outer boundaries of the Section

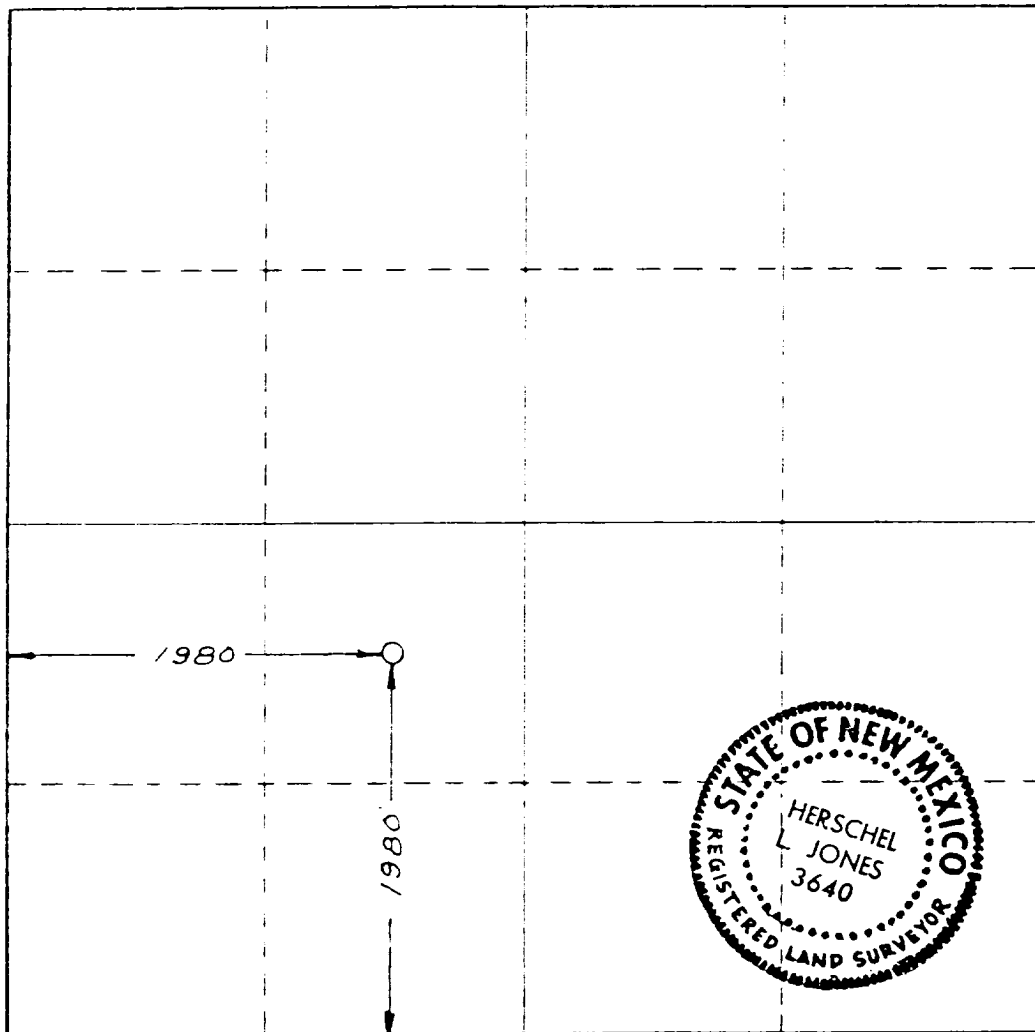
Section		INC.		Lease		Acres	
27		QUANAH PETROLEUM		Hay Federal "P"		1	
Section	Quarter	Township	Range	County			
27	1	27 South	27 East	Eddy			
Approximate location of well							
Section	feet from the	South	line and	1980	feet from the	West	line
27	1980	Producing Formation	Pool	Dedicated Acreage			

- Outline the acreage dedicated to the subject well by colored pencil or hachure marks on the plat below.
- If more than one lease is dedicated to the well, outline each and identify the ownership thereof (both as to working interest and royalty).
- If more than one lease of different ownership is dedicated to the well, have the interests of all owners been consolidated by communitization, unitization, force-pooling, etc?

☐ Yes ☐ No If answer is "yes," type of consolidation \_\_\_\_\_

If answer is "no," list the owners and tract descriptions which have actually been consolidated. (Use reverse side of this form if necessary.) \_\_\_\_\_

No allowable will be assigned to the well until all interests have been consolidated (by communitization, unitization, forced-pooling, or otherwise) or until a non-standard unit, eliminating such interests, has been approved by the Commission.



**CERTIFICATION**

I hereby certify that the information contained herein is true and complete to the best of my knowledge and belief.

*Walter P. Oliver*  
Name  
Walter P. Oliver  
Position  
Vice President Operations  
Company  
Quanah Petroleum, Inc.  
Date  
September 9, 1981

I hereby certify that the well location shown on this plat was plotted from field notes of actual surveys made by me or under my supervision, and that the same is true and correct to the best of my knowledge and belief.

Date Surveyed  
August 25, 1981  
Registered Professional Engineer  
and/or Land Surveyor  
*Herschel L. Jones*  
Certificate No  
3640

