

UNITED STATES  
DEPARTMENT OF THE INTERIOR  
GEOLOGICAL SURVEY

EX OIL CONS COMMISSION  
Artesia, NM 88210

30-015-23940

RECEIVED

APPLICATION FOR PERMIT TO DRILL, DEEPEN, OR PLUG BACK

1a. TYPE OF WORK

DRILL ☒

DEEPEN ☐

PLUG BACK ☐

b. TYPE OF WELL

CIL  
WELL ☒

GAS  
WELL ☐

OTHER

SINGLE  
ZONE ☒

MULTIPLE  
ZONE ☐

2. NAME OF OPERATOR

CALLAWAY OIL & GAS CO.

3. ADDRESS OF OPERATOR

205 WILCO BUILDING, MIDLAND, TEXAS 79701

4. LOCATION OF WELL (Report location clearly and in accordance with any State requirements.)

At surface

1780' FNL AND 1980' FWL OF SECTION 25

At proposed prod. zone

14. DISTANCE IN MILES AND DIRECTION FROM NEAREST TOWN OR POST OFFICE\*

14 MILES SOUTH OF MALAGA, NEW MEXICO

15. DISTANCE FROM PROPOSED\*

LOCATION TO NEAREST  
PROPERTY OR LEASE LINE, FT.  
(Also to nearest drlg. unit line, if any)

1880'

16. NO. OF ACRES IN LEASE

1080.91

17. NO. OF ACRES ASSIGNED  
TO THIS WELL

40

18. DISTANCE FROM PROPOSED LOCATION\*  
TO NEAREST WELL, DRILLING, COMPLETED,  
OR APPLIED FOR, ON THIS LEASE, FT.

-

19. PROPOSED DEPTH

4300'

20. ROTARY OR CABLE TOOLS

ROTARY

21. ELEVATIONS (Show whether DF, RT, GR, etc.)

2930.8

22. APPROX. DATE WORK WILL START\*

DECEMBER 26, 1981

23.

PROPOSED CASING AND CEMENTING PROGRAM

SIZE OF HOLE	SIZE OF CASING	WEIGHT PER FOOT	SETTING DEPTH	QUANTITY OF CEMENT
11"	8-5/8"	24# K-55	500'	SUFFICIENT TO CIRCULATE
7-7/8"	4-1/2"	9.5# K-55	4300'	SUFFICIENT TO CIRCULATE

PRODUCING ZONE WILL BE PERFORATED AND STIMULATED AS NECESSARY.

SEE ATTACHED FOR: SUPPLEMENTAL DRILLING DATA

BOP SKETCH

SURFACE USE AND OPERATIONS PLAN

*Handwritten notes:*  
Post ID-3  
Long Brown  
1/2 in  
12-25-81

IN ABOVE SPACE DESCRIBE PROPOSED PROGRAM: If proposal is to deepen or plug back, give data on present productive zone and proposed new productive zone. If proposal is to drill or deepen directionally, give pertinent data on subsurface locations and measured and true vertical depths. Give blowout preventer program if any.

24.

SIGNED

Arthur R. Brown

TITLE

Agent for  
CALLAWAY OIL & GAS CO.

DATE

DECEMBER 7, 1981

(This space for Federal or State office use)

PERMIT NO.

APPROVED

APPROVAL DATE

APPROVED BY

TITLE

DATE

CONDITIONS OF APPROVAL, IF ANY

DEC 14 1981

JAMES A. GILLHAM  
DISTRICT SUPERVISOR

\*See Instructions On Reverse Side

**NEW MEXICO OIL CONSERVATION COMMISSION  
WELL LOCATION AND ACREAGE DEDICATION PLAT**

Form C-102  
Supersedes C-128  
Effective 1-1-85

All distances must be from the outer boundaries of the Section

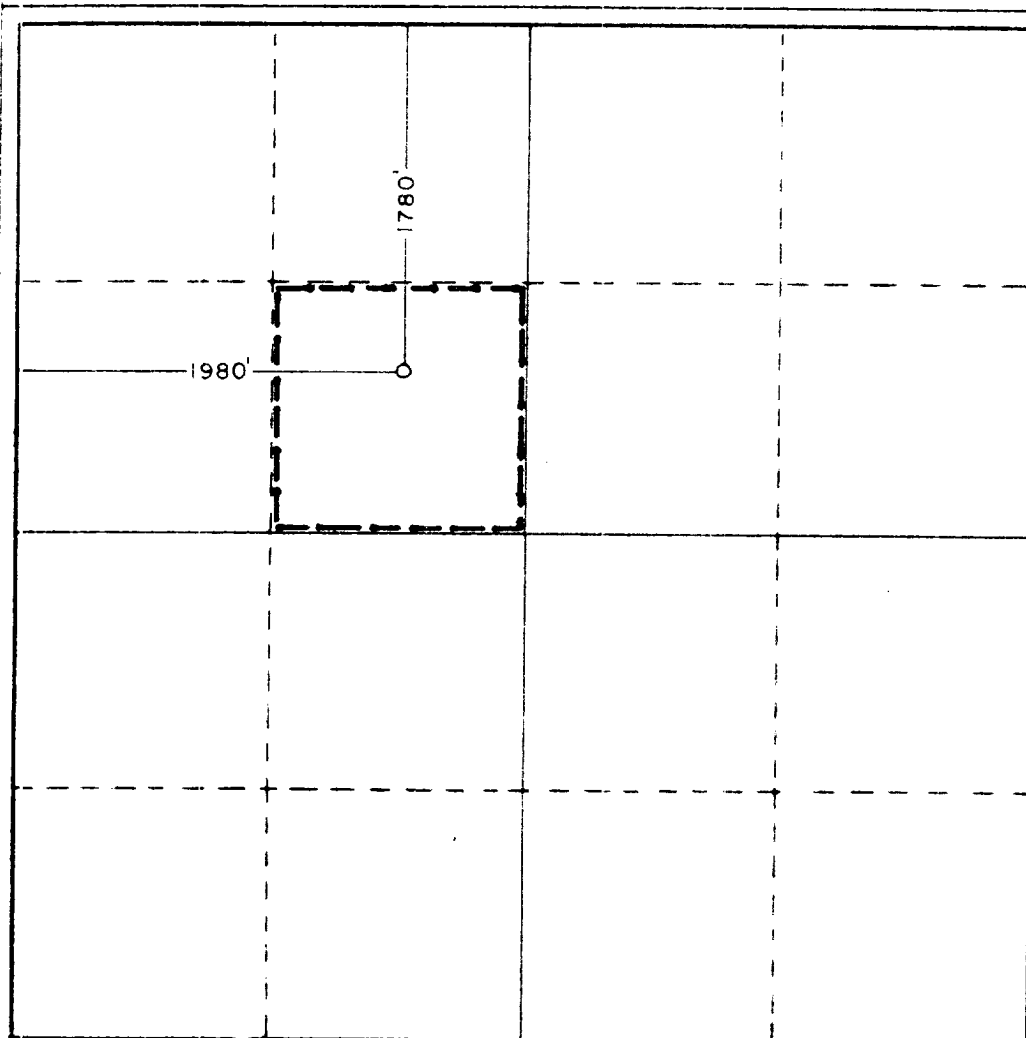
Lessor <b>CALLAWAY OIL &amp; GAS CO.</b>			Lease <b>Mobil Fed.</b>			Well No. <b>1</b>		
Section Letter <b>F</b>	Section <b>25</b>	Township <b>26South</b>	Range <b>28East</b>	County <b>Eddy</b>				
Actual Footage Location of Well: <div style="display: flex; justify-content: space-between;"> <span><b>1780</b> feet from the <b>North</b> line and</span> <span><b>1980</b> feet from the <b>West</b> line</span> </div>								
Ground Level Elev <b>2930.8'</b>	Producing Formation <b>CHERRY CANYON</b>		Pool <b>WILDCAT</b>			Dedicated Acreage: <b>40</b> Acres		

1. Outline the acreage dedicated to the subject well by colored pencil or hachure marks on the plat below.
2. If more than one lease is dedicated to the well, outline each and identify the ownership thereof (both as to working interest and royalty).
3. If more than one lease of different ownership is dedicated to the well, have the interests of all owners been consolidated by communitization, unitization, force-pooling, etc?

☐ Yes    ☐ No    If answer is "yes," type of consolidation \_\_\_\_\_

If answer is "no," list the owners and tract descriptions which have actually been consolidated. (Use reverse side of this form if necessary.) \_\_\_\_\_

No allowable will be assigned to the well until all interests have been consolidated (by communitization, unitization, forced-pooling, or otherwise) or until a non-standard unit, eliminating such interests, has been approved by the Commission.



**CERTIFICATION**

I hereby certify that the information contained herein is true and complete to the best of my knowledge and belief.

Name *Arthur R. Brown*  
**Arthur R. Brown**

Position  
**Agent for**

Company  
**CALLAWAY OIL & GAS CO.**

Date  
**DECEMBER 7, 1981**

I hereby certify that the well location shown on this plat was plotted from field notes of actual surveys made by me or under my supervision, and that the same is true and correct to the best of my knowledge and belief.

Date Surveyed  
**Sept. 2, 1981**

Registered Professional Engineer  
and/or Land Surveyor

*John W. West*

Certificate No. **JOHN W. WEST 676**  
**PATRICK A. ROMERO 6863**

## SUPPLEMENTAL DRILLING DATA

CALLAWAY OIL & GAS CO.  
WELL NO.1 MOBIL FEDERAL

1. SURFACE FORMATION: Recent

2. ESTIMATED TOPS OF GEOLOGIC MARKERS:

Lamar Lime	2500'
Delaware Sand	2550'

3. ANTICIPATED POSSIBLE HYDROCARBON BEARING ZONES:

Cherry Canyon	Oil
---------------	-----

4. PROPOSED CASING AND CEMENTING PROGRAM:

CASING SIZE	SETTING DEPTH		WEIGHT	GRADE	JOINT
	FROM	TO			
8-5/8"	0	500	24#	K-55	STC
4-1/2"	0	4300	9.5#	K-55	STC

Equivalent or better grades and weights of casing may be substituted depending on availability.

8-5/8" casing will be cemented with approximately 250 sacks of Class "C". Cement to circulate.

4-1/2" casing will be cemented with sufficient "Light" cement, tailed in with 100 sacks of Class "H" cement, to circulate.

5. PRESSURE CONTROL EQUIPMENT:

Blowout prevention equipment will consist of a double ram type, 3000 psi working pressure preventer.

A BOP sketch is attached.

6. CIRCULATING MEDIUM:

Surface to 500 feet: Fresh water with lime or gel as needed for viscosity control.

500 feet to Total Depth: Brine with additives as necessary for control of viscosity, pH, water-loss, and weight.

7. AUXILIARY EQUIPMENT:

Drill string safety valves will be maintained on the rig floor while drilling operations are in progress.

8. TESTING, LOGGING, AND CORING PROGRAMS:

Drill stem tests will be made when samples, drilling time, and other data indicate a test is warranted.

It is planned that electric logs will include a GR-Sonic log.

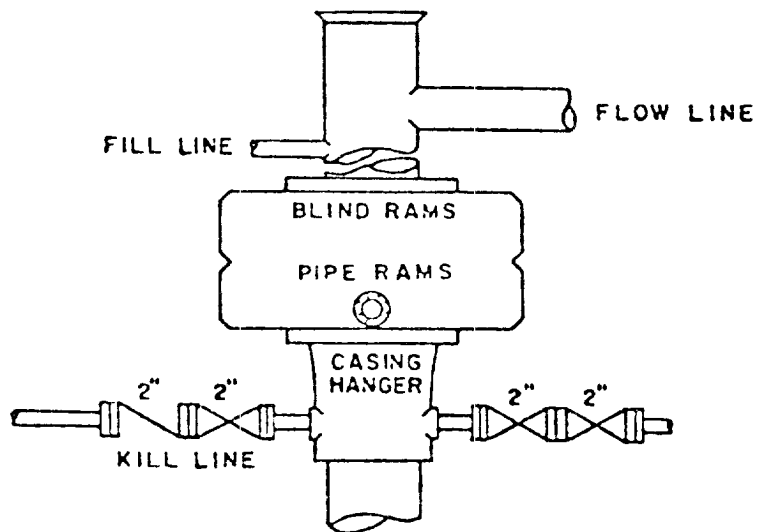
No coring is planned.

9. ABNORMAL PRESSURES, TEMPERATURES, AND HYDROGEN SULFIDE GAS:

None anticipated.

10. ANTICIPATED STARTING DATE:

It is planned that operations will commence on or about December 26, 1981, and that diligent drilling operations will be in progress over the lease expiration date. Drilling and completion operations will probably require about 30 days.



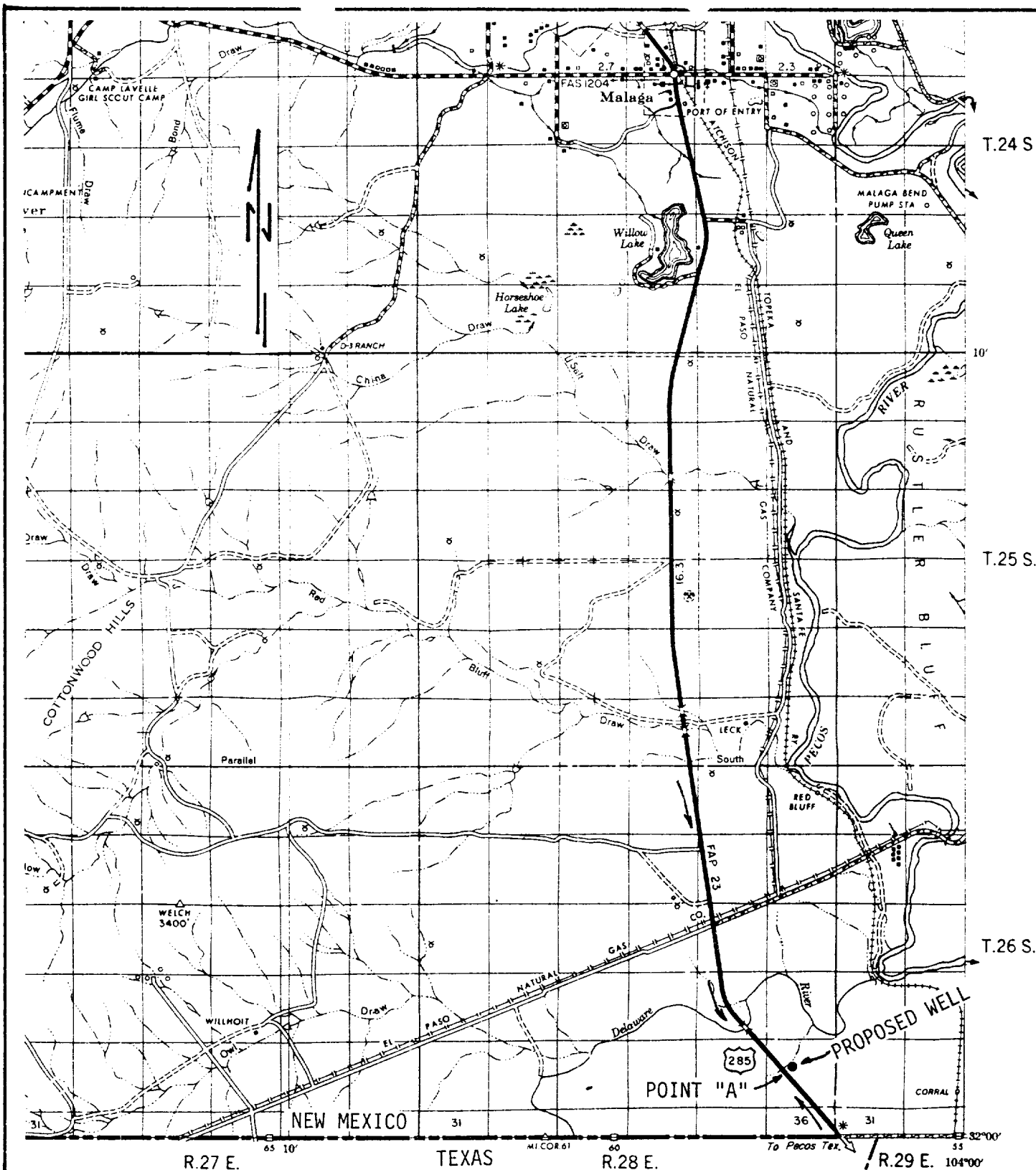
BOP STACK

3000 PSI WORKING PRESSURE

DEPTH INTERVAL

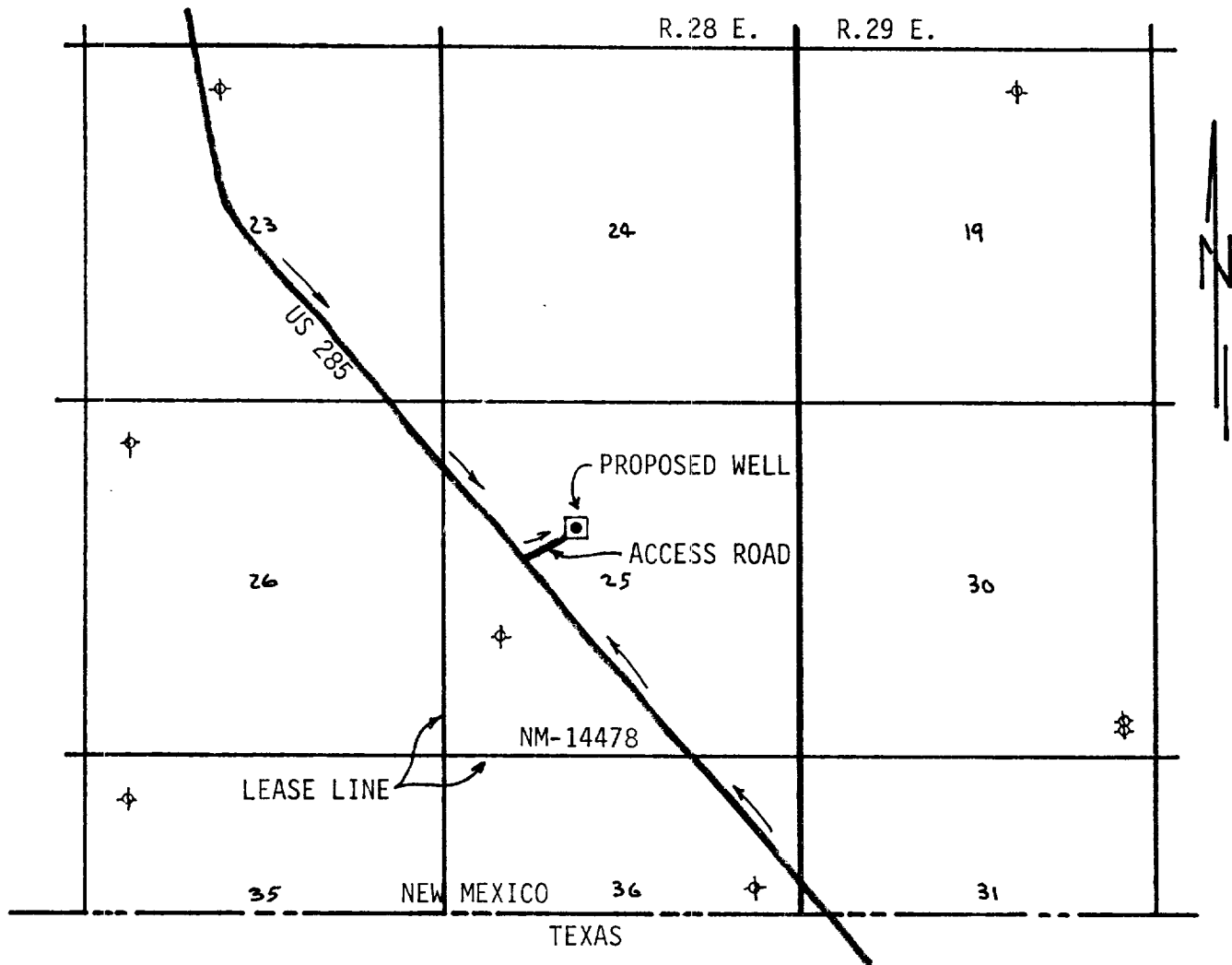
FROM 8-5/8" CASING SEAT TO TOTAL DEPTH

BOP ARRANGEMENT



### EXHIBIT "A"

CALLAWAY OIL & GAS CO.  
WELL NO.1 MOBIL FEDERAL  
1780' FNL & 1980' FWL SEC.25, T.26 S., R.28 E.  
EDDY COUNTY, N.M. SCALE: 1/2" = 1 MI.

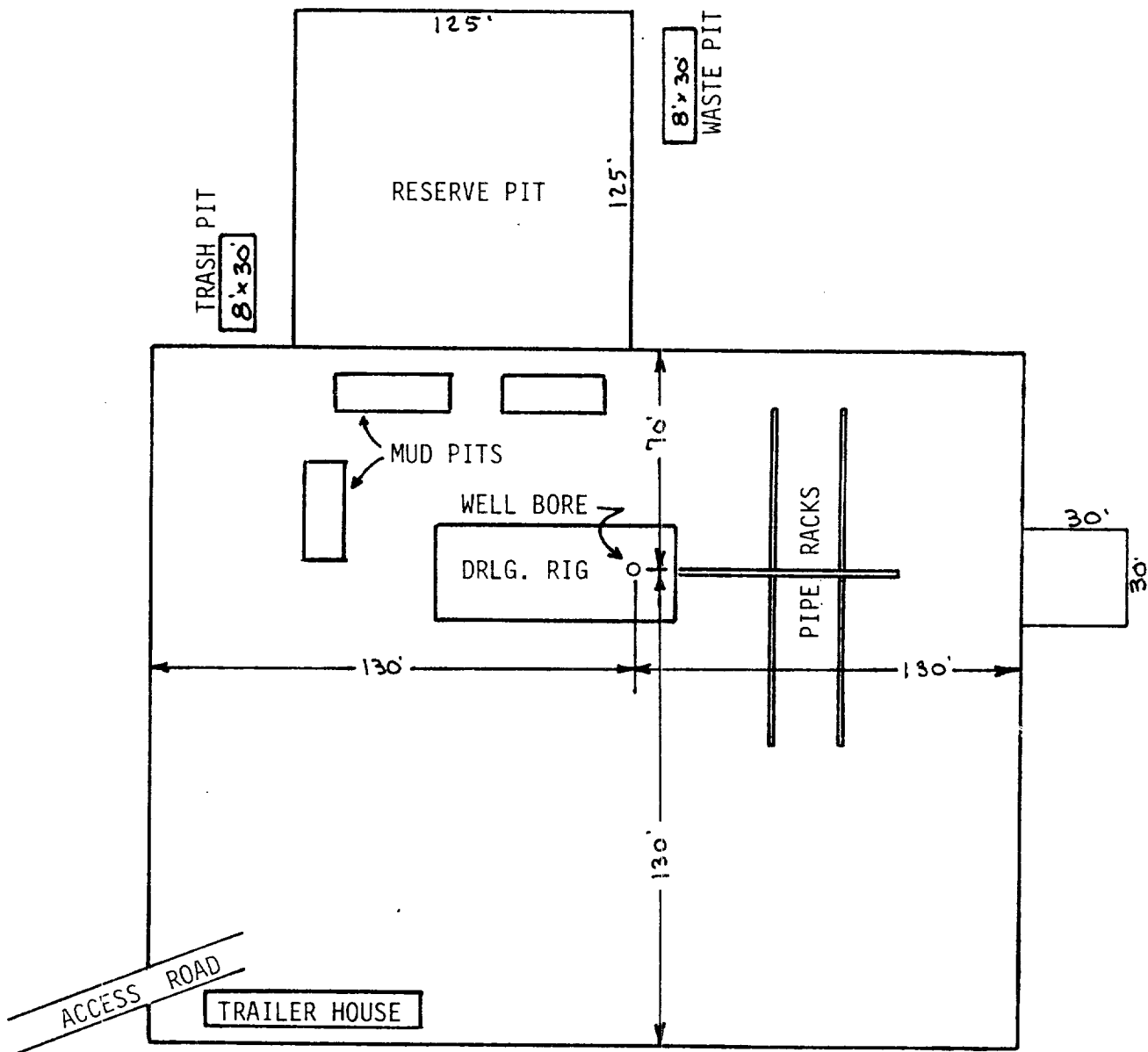


LEGEND:

- ⊕ Plugged Well
- Proposed Well
- Paved Road
- - - Access Road

EXHIBIT "B"

CALLAWAY OIL & GAS CO.  
 WELL NO.1 MOBIL FEDERAL  
 1780'FNL & 1980'FWL SEC.25, T.26 S., R.28 E.  
 EDDY COUNTY, N.M. SCALE: 2" = 1 MI.

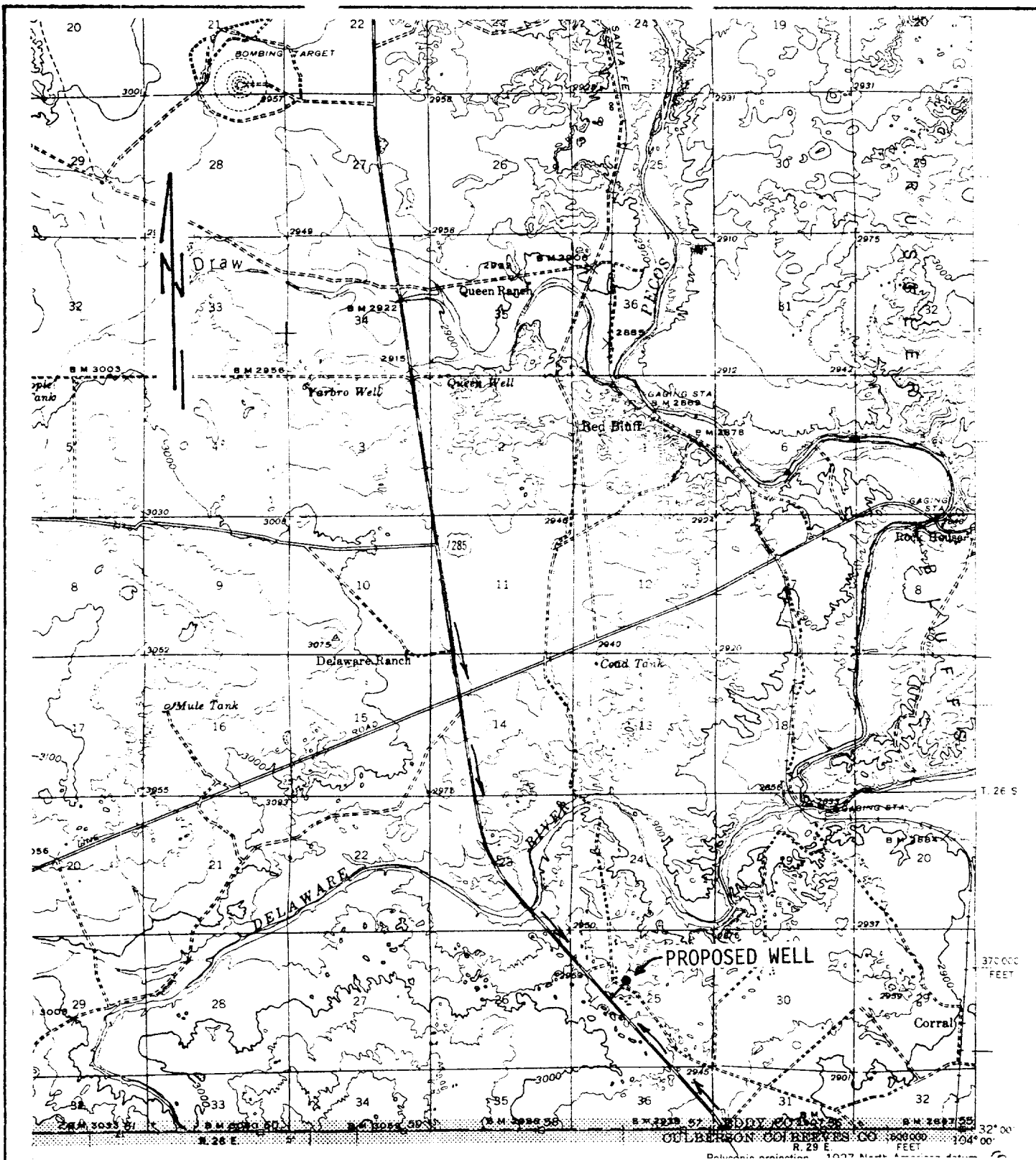


# EXHIBIT "C"

CALLAWAY OIL & GAS CO.  
WELL NO.1 MOBIL FEDERAL  
DRILLING RIG LAYOUT

SCALE: None





# EXHIBIT "D"

CALLAWAY OIL & GAS CO.  
WELL NO.1 MOBIL FEDERAL

TOPO PLAT

CONTOUR INTERVAL: 25'

SCALE: 1" = 5208'