

Submit to Appropriate
District Office
State Lease - 6 copies
Fee Lease - 5 copies

State of New Mexico
Energy, Minerals and Natural Resources Department

Form C-101
Revised 1-1-89

DISTRICT I
P.O. Box 1980, Hobbs, NM 88240

DISTRICT II
P.O. Drawer DD, Artesia, NM 88210

DISTRICT III
1000 Rio Brazos Rd., Aztec, NM 87410

OIL CONSERVATION DIVISION

P.O. Box 2088
Santa Fe, New Mexico 87508

JAN 3 1 1992

O.C.D.

API NO. (assigned by OCD on New Wells)
30-015-23959

5. Indicate Type of Lease

STATE ☒ FEE ☐

6. State Oil & Gas Lease No.
V-2173

7. Lease Name or Unit Agreement Name

Southland "AKL" State

8. Well No. 1

9. Pool name or Wildcat
Wildcat Delaware

APPLICATION FOR PERMIT TO DRILL, DEEPEN OR PLUG BACK

1a. Type of Work:

DRILL ☐ RE-ENTER ☒ DEEPEN ☐ PLUG BACK ☐

b. Type of Well:

OIL WELL ☒ GAS WELL ☐ OTHER ☐ SINGLE ZONE ☐ MULTIPLE ZONE ☐

2. Name of Operator

Yates Petroleum Corporation

3. Address of Operator

105 South Fourth Street, Artesia, New Mexico 88210

4. Well Location

Unit Letter H : 2080 Feet From The North Line and 660 Feet From The East Line
Section 1 Township 25 South Range 27 East NMPM Eddy County

10. Proposed Depth
5935'

11. Formation
Delaware

12. Rotary or C.T.
Rotary

13. Elevations (Show whether DF, RT, GR, etc.)
3092.4' GR

14. Kind & Status Plug. Bond
Blanket

15. Drilling Contractor
Undesignated

16. Approx. Date Work will start
ASAP

PROPOSED CASING AND CEMENT PROGRAM

| SIZE OF HOLE | SIZE OF CASING | WEIGHT PER FOOT | SETTING DEPTH | SACKS OF CEMENT | EST. TOP |
|--------------|----------------|-----------------|----------------|-----------------|------------|
| 11" | 8 5/8" | 24 & 28# | 2259' in Place | | Circulated |
| 7 7/8" | 4 1/2" | 11.6# | 7002' in Place | | 4425' |
| | | | | | |

This well was originally drilled by Wayne Moore as the Southland State #1 to a depth of 7002'. It was plugged in February, 1987. Yates proposes to drill out the plugs and clear out the well to the top of the plug at 5940'. Perforate, acidize and test the Delaware formation estimated 5800 to 5900'.

Former: Wood & Loebe Inc.
Southland St. #1
OTD - 7002
P&A - 2-20-87

Post ID-1
2-7-92
Re-entry

APPROVAL VALID FOR 180 DAYS
PERMIT EXPIRES 7/31/92
UNLESS DRILLING UNDERWAY

IN ABOVE SPACE DESCRIBE PROPOSED PROGRAM: IF PROPOSAL IS TO DEEPEN OR PLUG BACK, GIVE DATA ON PRESENT PRODUCTIVE ZONE AND PROPOSED NEW PRODUCTIVE ZONE. GIVE BLOWOUT PREVENTER PROGRAM, IF ANY.

I hereby certify that the information above is true and complete to the best of my knowledge and belief.

SIGNATURE

Clifton R. May

TITLE

Permit Agent

DATE

1-31-92

TYPE OR PRINT NAME

Clifton R. May

TELEPHONE NO. 748-1471

(This space for State Use)

ORIGINAL SIGNED BY
MIKE WILLIAMS

APPROVED BY

SUPERVISOR, DISTRICT II

TITLE

DATE

JAN 8 1 1992

CONDITIONS OF APPROVAL, IF ANY:

NEW MEXICO OIL CONSERVATION COMMISSION
LOCATION AND ACREAGE DEDICATION PLAT

Form C-102
Supersedes C-128
Effective 1-1-65

All distances must be from the outer boundaries of the Section.

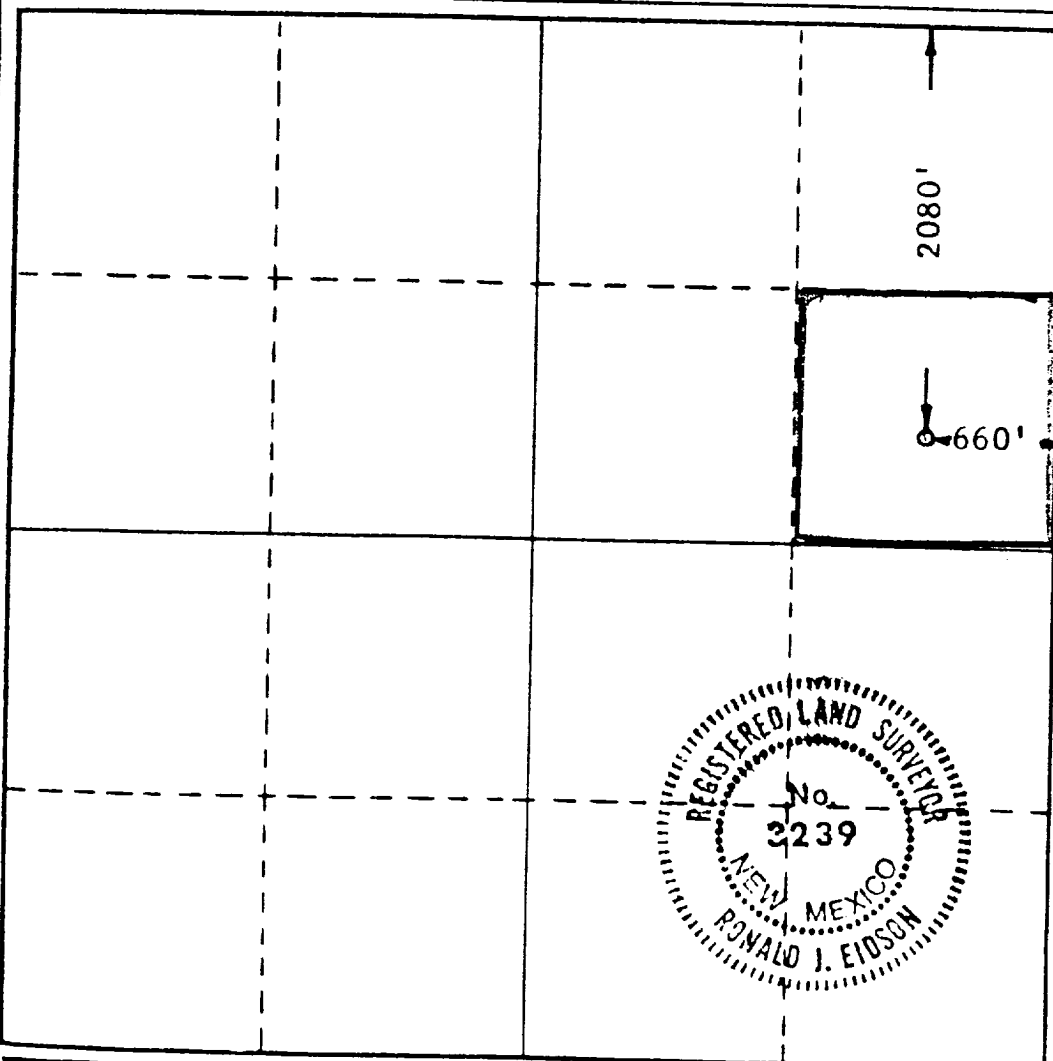
| | | | | | | | | |
|--|--|-----------------------------|---------------------------------|------------------------|---------------------------------------|----------------------|--|--|
| Operator Wayne Moore | | | Lease Southland State | | | Well No. 1 | | |
| Unit Letter H | Section 1 | Township 25 South | Range 27 East | County Eddy | | | | |
| Actual Footage Location of Well: 2080' feet from the North line and 660 feet from the East line | | | | | | | | |
| Ground Level Elev. 3092.4 | Producing Formation Bone Springs | | | Pool Wildcat | Dedicated Acreage: 40 Acres | | | |

1. Outline the acreage dedicated to the subject well by colored pencil or hachure marks on the plat below.
2. If more than one lease is dedicated to the well, outline each and identify the ownership thereof (both as to working interest and royalty).
3. If more than one lease of different ownership is dedicated to the well, have the interests of all owners been consolidated by communitization, unitization, force-pooling, etc?

☐ Yes ☐ No If answer is "yes," type of consolidation _____

If answer is "no," list the owners and tract descriptions which have actually been consolidated. (Use reverse side of this form if necessary.) _____

No allowable will be assigned to the well until all interests have been consolidated (by communitization, unitization, forced-pooling, or otherwise) or until a non-standard unit, eliminating such interests, has been approved by the Commission.



CERTIFICATION

I hereby certify that the information contained herein is true and complete to the best of my knowledge and belief.

Tom E. Moore

Name

Position

Company

Wayne Moore

Date

10-6-81

I hereby certify that the well location shown on this plat was plotted from field notes of actual surveys made by me or under my supervision, and that the same is true and correct to the best of my knowledge and belief.

Date Surveyed

10-5-1981

Registered Professional Engineer and/or Land Surveyor

Ronald J. Eidson

Certificate No. **JOHN W. WEST 676**
PATRICK A. ROMERO 6665
Ronald J. Eidson 3030

Submit to Appropriate
District Office
State Lease - 4 copies
Fee Lease - 3 copies

State of New Mexico
Energy, Minerals and Natural Resources Department

Form C-102
Revised 1-1-89

OIL CONSERVATION DIVISION

DISTRICT I
P.O. Box 1980, Hobbs, NM 88240

P.O. Box 2088

Santa Fe, New Mexico 87504-2088

DISTRICT II
P.O. Drawer DD, Artesia, NM 88210

DISTRICT III
1000 Rio Brazos Rd., Aztec, NM 87410

WELL LOCATION AND ACREAGE DEDICATION PLAT

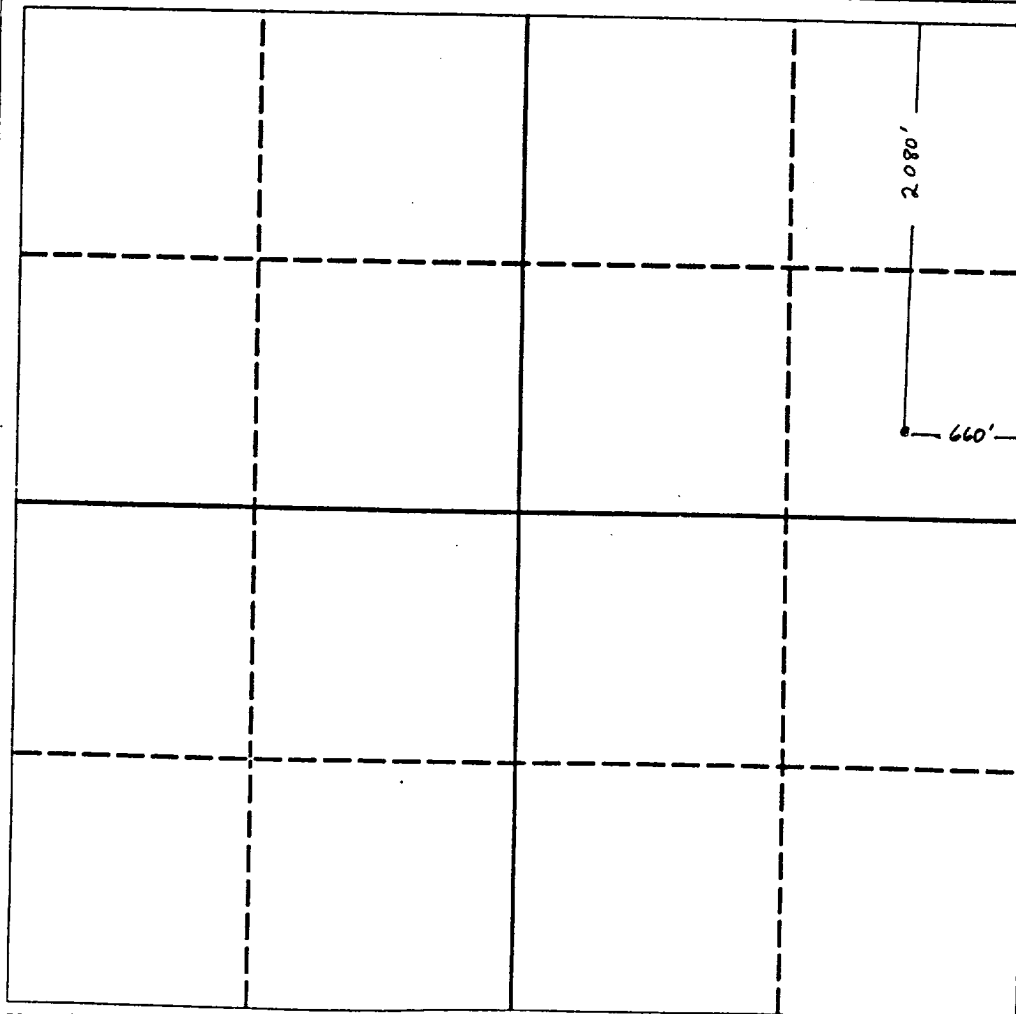
All Distances must be from the outer boundaries of the section

| | | | | | |
|---|--------------|----------------------|--------------------------------|----------------|---------------|
| Operator YATES PETROLEUM CORPORATION | | | Lease Southland "AKL" State | | Well No. 1 |
| Unit Letter H | Section 1 | Township 25 South | Range 27 East | County Eddy | |

Actual Footage Location of Well:

| | | | |
|---|---------------------------------|--------------------------|--------------------------------|
| 2080 feet from the North line and 660 feet from the East line | | | |
| Ground level Elev. 3092.4' | Producing Formation DELAWARE | Pool WILDCAT DELAWARE | Dedicated Acreage: 40 Acres |

1. Outline the acreage dedicated to the subject well by colored pencil or hatchure marks on the plat below.
2. If more than one lease is dedicated to the well, outline each and identify the ownership thereof (both as to working interest and royalty).
3. If more than one lease of different ownership is dedicated to the well, have the interest of all owners been consolidated by communitization, unitization, force-pooling, etc.?
☐ Yes ☐ No If answer is "yes" type of consolidation _____
If answer is "no" list the owners and tract descriptions which have actually been consolidated. (Use reverse side of this form if necessary). _____
No allowable will be assigned to the well until all interests have been consolidated (by communitization, unitization, forced-pooling, or otherwise) or until a non-standard unit, eliminating such interest, has been approved by the Division.



OPERATOR CERTIFICATION

I hereby certify that the information contained herein is true and complete to the best of my knowledge and belief.

Signature
Clifton R. May
Printed Name
Clifton R. May
Position
Permit Agent
Company
YATES PETROLEUM CORPORATION
Date
January 31, 1992

SURVEYOR CERTIFICATION

I hereby certify that the well location shown on this plat was plotted from field notes of actual surveys made by me or under my supervision, and that the same is true and correct to the best of my knowledge and belief.

Date Surveyed
See original plat
Signature & Seal of
Professional Surveyor

Certificate No.

