

RECEIVED

UNITED STATES  
DEPARTMENT OF THE INTERIOR  
GEOLOGICAL SURVEY  
Artesia, NM 88210

5. LEASE  
NM 22207

6. IF INDIAN, ALLOTTEE OR TRIBAL NAME  
APR 2 1982

C/SF

SUNDRY NOTICES AND REPORTS ON WELLS

(Do not use this form for proposals to drill or to deepen or plug back to a different reservoir. Use Form 9-331-C for such proposals.)

1. oil well ☐ gas well ☒ other Storage

2. NAME OF OPERATOR

El Paso Natural Gas Company /

3. ADDRESS OF OPERATOR

1800 Wilco Bldg. - Midland, Texas 79701

4. LOCATION OF WELL (REPORT LOCATION CLEARLY. See space 17 below.)

AT SURFACE: 1052' FSL & 2055' FWL

AT TOP PROD. INTERVAL:

AT TOTAL DEPTH:

16. CHECK APPROPRIATE BOX TO INDICATE NATURE OF NOTICE, REPORT, OR OTHER DATA

REQUEST FOR APPROVAL TO:

TEST WATER SHUT-OFF ☐

FRACTURE TREAT ☐

SHOOT OR ACIDIZE ☐

REPAIR WELL ☐

PULL OR ALTER CASING ☐

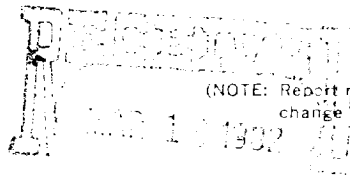
MULTIPLE COMPLETE ☐

CHANGE ZONES ☐

ABANDON\* ☐

(other) Spud & drlg. Operation

SUBSEQUENT REPORT OF:



(NOTE: Report results of multiple completion or zone change on Form 9-330.)

17. DESCRIBE PROPOSED OR COMPLETED OPERATIONS (Clearly state all pertinent details, and give pertinent dates, including estimated date of starting any proposed work. If well is directionally drilled, give subsurface locations and measured and true vertical depths for all markers and zones pertinent to this work.)\*

Spudded 12 1/2" hole on 3-8-82 at 5:00 a.m., Young Drilling Rig No. 5. Drilled to 812' and ran 9 5/8", 32.3#, H-40 casing set at 811.12'. Cemented with 500 sxs. Cl. "C" cement and circulated 50 sxs. to surface. Job complete at 11:45 p.m. 3-9-82. Top of cement at surface. WOC 9 1/2 hours and tested casing 900 psi, test OK. Reduced hole to 8 3/4" and resumed drilling operations.

Project Approved by NMOCDD Order No. R-6175-A

Subsurface Safety Valve: Manu. and Type

Set @ Ft.

18. I hereby certify that the foregoing is true and correct

SIGNED John D. Neek TITLE Suprv. Prod. Svcs. DATE March 12, 1982

(This space for Federal or State office use)

APPROVED BY

TITLE

DATE

CONDITIONS OF APPROVAL, IF ANY

FOR RECORD

A. CHAPMAN

MAR 19 1982

\*See Instructions on Reverse Side

U.S. GEOLOGICAL SURVEY  
ROSWELL, NEW MEXICO