

NEW MEXICO OIL CONSERVATION COMMISSION
WELL LOCATION AND ACREAGE DEDICATION PLAT

Form C-102
Supersedes C-12H
Effective 10-85

All distances must be from the outer boundaries of the Section.

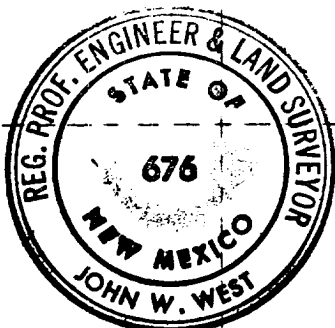
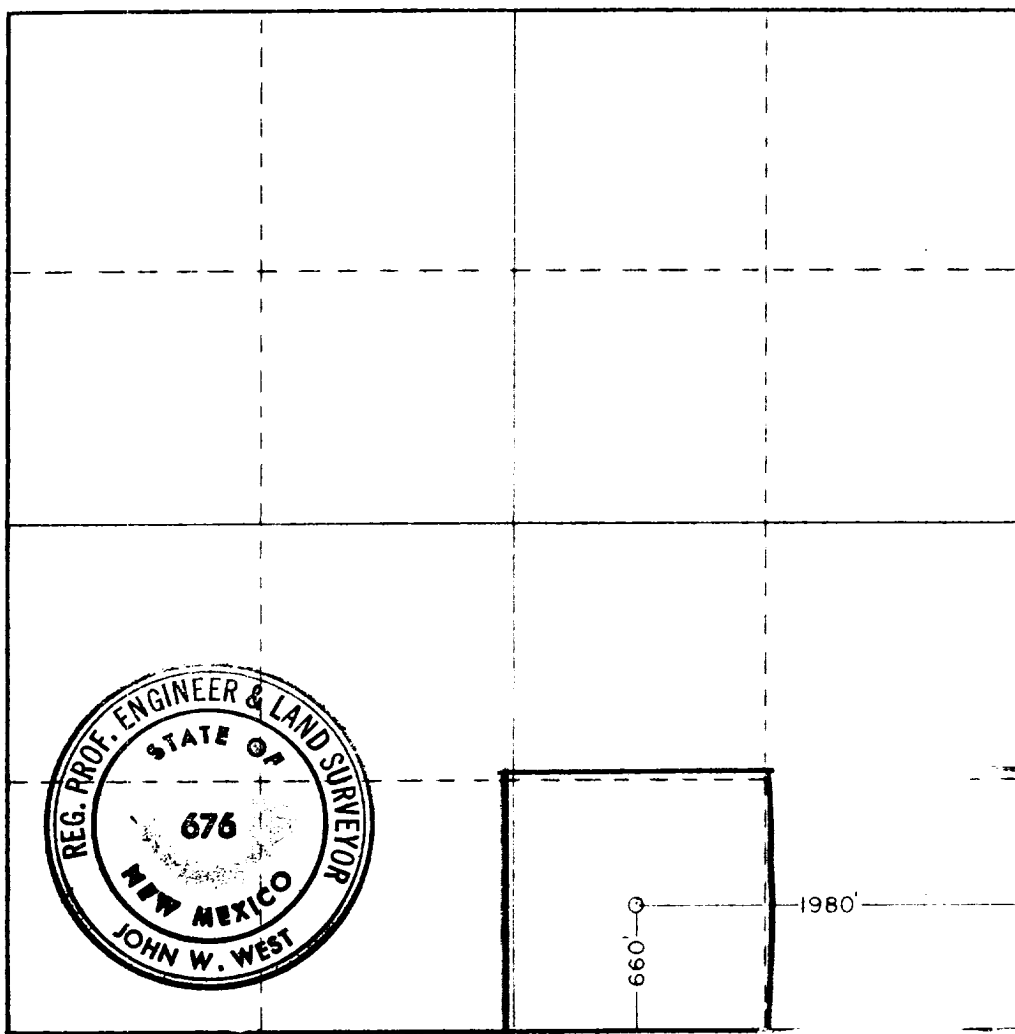
Operator Jubilee Energy Corp.			Lease Hay Hollow Federal			Well No. 1		
Tract Letter 0	Section 1	Township 26 South	Range 27 East	County Eddy				
Actual Well Location of Well: 660 feet from the South line and 1980 feet from the East line								
Ground Level Elev. 3154.4'		Producing Formation BONE SPRINGS		Pool <i>Willcat Bone Springs</i>		Dedicated Acreage 40 Acres		

1. Outline the acreage dedicated to the subject well by colored pencil or hatchure marks on the plat below.
2. If more than one lease is dedicated to the well, outline each and identify the ownership thereof (both as to working interest and royalty).
3. If more than one lease of different ownership is dedicated to the well, have the interests of all owners been consolidated by communitization, unitization, force-pooling, etc?

☐ Yes ☒ No If answer is "yes," type of consolidation _____

If answer is "no," list the owners and exact descriptions which have actually been consolidated. (Use reverse side of this form if necessary.) *Not Applicable*

No allowable will be assigned to the well until all interests have been consolidated (by communitization, unitization, forced-pooling, or otherwise) or until a non-standard unit, eliminating such interests, has been approved by the Commission.



CERTIFICATION

I hereby certify that the information contained herein is true and complete to the best of my knowledge and belief.

E. R. RHODES

Name

VICE- PRESIDENT

Position

JUBILEE ENERGY CORP.

Company

DECEMBER 31, 1981

Date

E. R. Rhodes

I hereby certify that the well location shown on this plat was plotted from field notes of actual surveys made by me or under my supervision, and that the same is true and correct to the best of my knowledge and belief.

Date Surveyed

Dec. 22, 1981

Registered Professional Engineer and/or Land Surveyor

John W. West

Certificate No. **JOHN W. WEST 676**
PATRICK A. ROMERO 6863
Ronald J. Eidson 3239

0 330 660 990 1320 1650 1980 2310 2640 2970 3300 3630 3960 4290 4620 4950 5280 5610 5940 6270 6600