

UNITED STATES  
DEPARTMENT OF THE INTERIOR

## GEOLOGICAL SURVEY

## APPLICATION FOR PERMIT TO DRILL, DEEPEN, OR PLUG BACK

## 1a. TYPE OF WORK

DRILL ☒DEEPEN ☐PLUG BACK ☐

## b. TYPE OF WELL

OIL  
WELL ☐GAS  
WELL ☒

OTHER

RECEIVED  
ARTESIA, OFFICEMULTIPLE  
ZONE ☐

## 2. NAME OF OPERATOR

Pogo Producing Company ✓

DEC 29 1982

## 3. ADDRESS OF OPERATOR

P.O. Box 10340 Midland, Texas 79702 O. C. D.

## 4. LOCATION OF WELL (Report location clearly and in accordance with any State requirements.)\*

At surface

1980' FNL &amp; 1980' FEL

At proposed prod. zone

1980' FNL &amp; 1980' FEL

## 14. DISTANCE IN MILES AND DIRECTION FROM NEAREST TOWN OR POST OFFICE\*

9 miles South of Malaga, New Mexico

## 15. DISTANCE FROM PROPOSED\*

LOCATION TO NEAREST  
PROPERTY OR LEASE LINE, FT.  
(Also to nearest drlg. unit line, if any)

1980'

## 16. NO. OF ACRES IN LEASE

1280

18. DISTANCE FROM PROPOSED LOCATION\*  
TO NEAREST WELL, DRILLING, COMPLETED,  
OR APPLIED FOR, ON THIS LEASE, FT.

3645'

## 19. PROPOSED DEPTH

13,400'

17. NO. OF ACRES ASSIGNED  
TO THIS WELL

320

## 20. ROTARY OR CABLE TOOLS

Rotary

## 21. ELEVATIONS (Show whether DF, RT, GR, etc.)

2934.2' GR

## 22. APPROX. DATE WORK WILL START\*

December 23, 1982

## 23.

## PROPOSED CASING AND CEMENTING PROGRAM :

SIZE OF HOLE	SIZE OF CASING	WEIGHT PER FOOT	SETTING DEPTH	QUANTITY OF CEMENT
26	20	94	600'	900 sx circulate
17 1/2	13 3/8	54.50 & 61	2600'	2300 sx circulate
12 1/4	9 5/8	40 & 43.5	9440'	1000 sx
8 1/2	7	29 & 32	12400'	600
6	4 1/2	11.6	13400'	200

Propose to drill a well to adequately test the Morrow formation. Cement will be circulated to surface on the 20" & 13 3/8" casing strings.

Completion or abandonment will be performed in accordance with prudent practices and regulatory requirements.

Mud Program: Spud mud to 600', brine to 2600', cut-brine to Wolfcamp with KCL-Polymer to total depth.

BOP Program: From 600' to 2600' - 20 Hydril, from 2600' to 9440' - 12" GK Hydril 900 series from 9440' to 13,400' - 10" Cameron QRC 1500 series.

Natural gas on this lease is not dedicated.

IN ABOVE SPACE DESCRIBE PROPOSED PROGRAM: If proposal is to deepen or plug back, give data on present productive zone and proposed new productive zone. If proposal is to drill or deepen directionally, give pertinent data on subsurface locations and measured and true vertical depths. Give blowout preventer program, if any.

## 24.

SIGNED

TITLE Division Operations Manager DATE 12/14/82

(This space for signature of State official use)

PERMIT NO.

(Orig. Sgd.) GEORGE H. STEWART

APPROVAL DATE

APPROVED BY

DEC 17 1982

TITLE

DATE

CONDITIONS OF APPROVAL, IF ANY:

JAMES A. GILLHAM  
DISTRICT SUPERVISOR

\*See Instructions On Reverse Side

OIL & GAS  
MINERALS MGMT. SERVICE  
ROSWELL, NEW MEXICO

NEED EXISTING CONFESSION OF RIGHTS  
WELL LOCATION AND ACREAGE DEDICATION PLAT

RECEIVED

Form No. 1  
Supersedes G-126  
Effective 1-1-82

All distances measured from the outer boundaries of the Section

OWNER <b>POGO PRODUCING CO.</b>		LEASEE <b>SAM FED.</b>		DATE <b>DEC 14 1982</b>		PAGE <b>2</b>	
Section <b>G</b>	Section <b>26</b>	Tract <b>25S</b>	Range <b>28E</b>	County <b>MIDLAND EDDY</b>			
1980 feet from the <b>NORTH</b> line and 1980 feet from the <b>EAST</b> line							
Producing Formation <b>Morrow</b>		Well <b>Wildcat</b>		Dedicated Acreage <b>320</b> Acres			

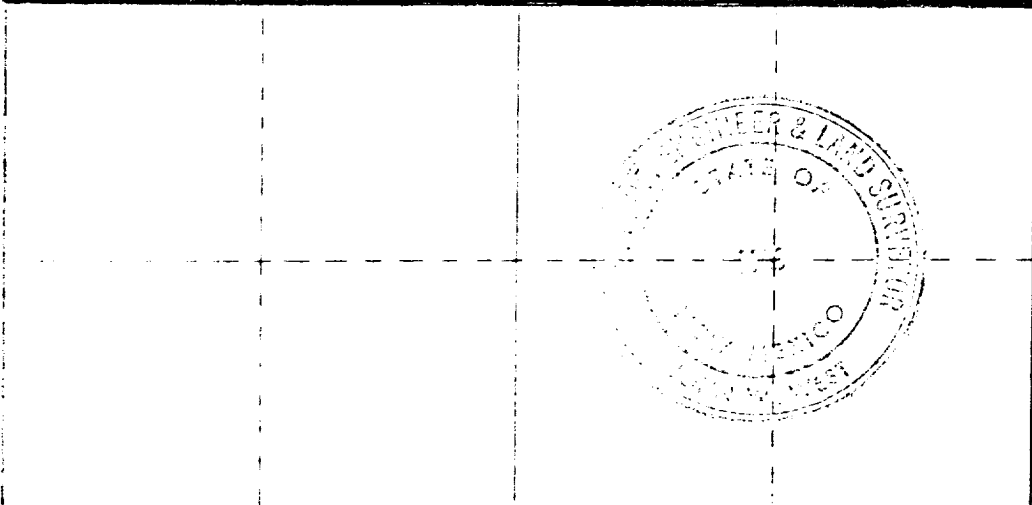
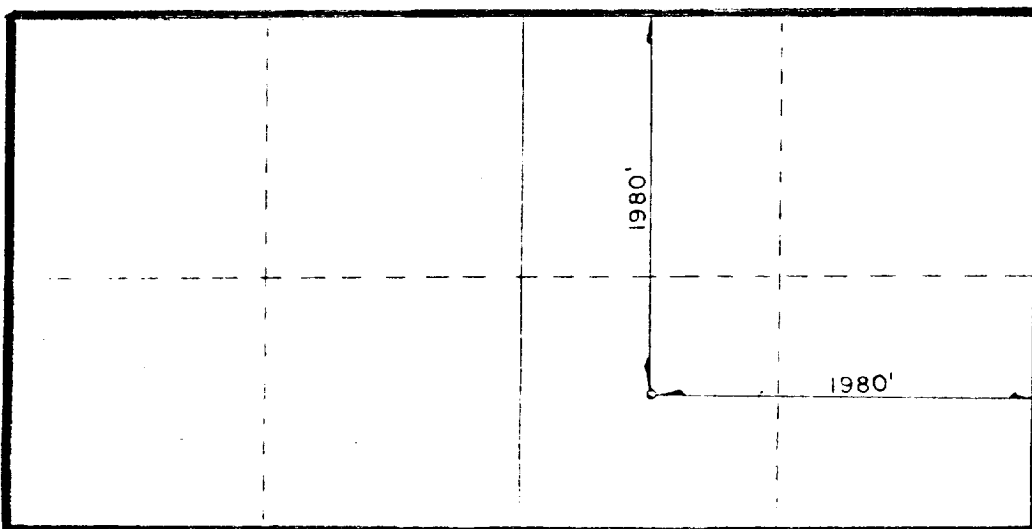
1. Outline the acreage dedicated to the subject well by colored pencil or hatchure marks on the plat below.
2. If more than one lease is dedicated to the well, outline each and identify the ownership thereof (both as to working interest and royalty).

If more than one lease of different ownership is dedicated to the well, have the interests of all owners been consolidated by communitization, unitization, force-pooling, etc?

☐ Yes ☐ No If answer is "yes" type of consolidation \_\_\_\_\_

If answer is "no" list the owners and tract descriptions which have actually been consolidated. (Use reverse side of this form if necessary.) \_\_\_\_\_

None available will be assigned to the well until all interests have been consolidated (by communitization, unitization, force-pooling, or otherwise) or until a non-standard unit, eliminating such interests, has been approved by the Commission.



CERTIFICATION

I hereby certify that the information contained herein is true and complete to the best of my knowledge and belief.

*B.J. Williams*

B.J. Williams

Division Operations Manager

Pogo Producing Company

December 14, 1982

I hereby certify that the well location shown on this plat was plotted from field notes of actual surveys made by me or under my supervision, and that the same is true and correct to the best of my knowledge and belief.

Date Surveyed

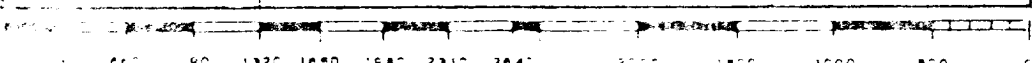
12/2/82

Registered Professional Engineer and/or Land Surveyor

*John W. West*

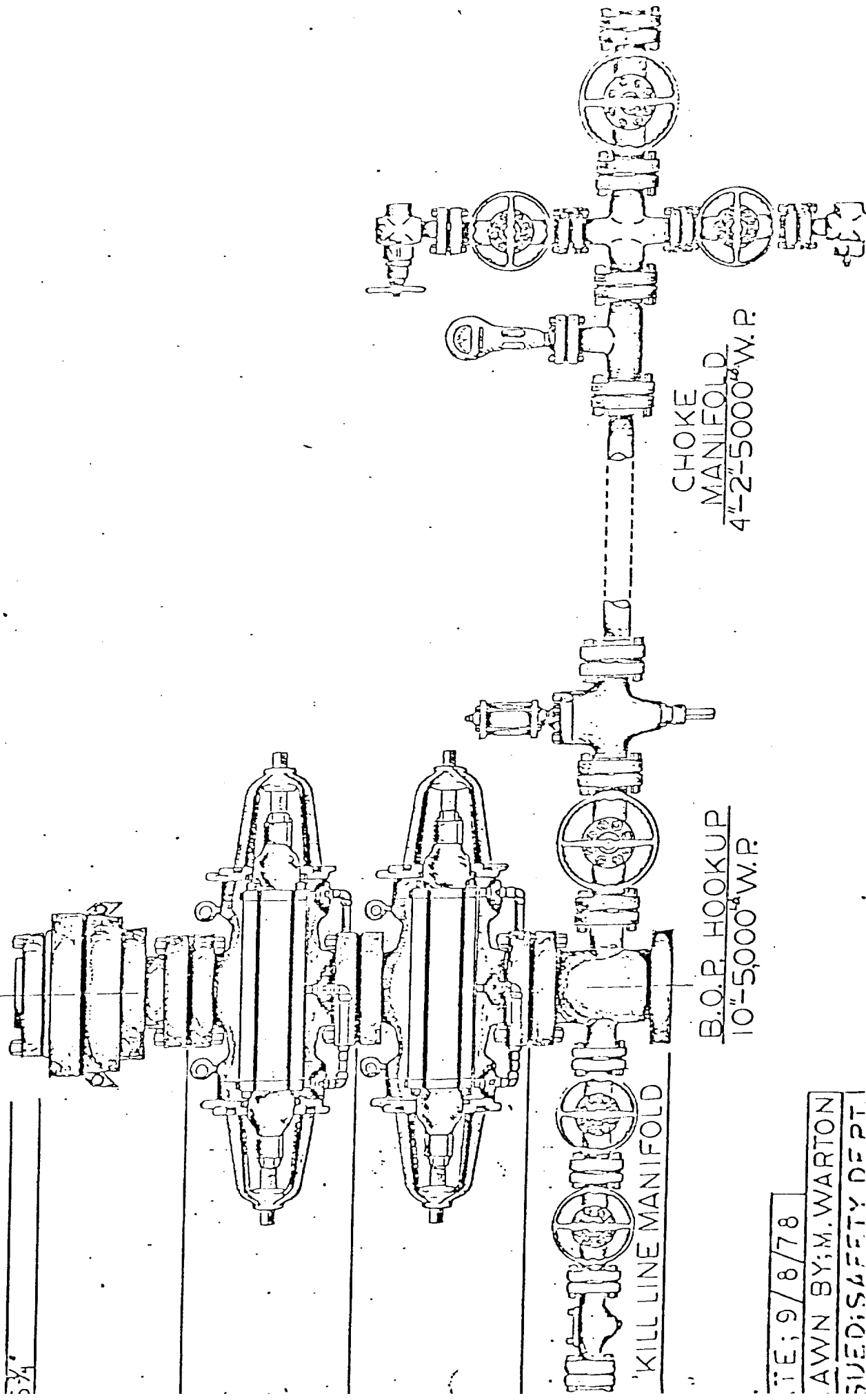
Certificate No.

JOHN W. WEST N.M.#676



B.O.P. ARRANGEMENT RIG NO. 6

- 1-G.K. HYDRILL 12"-900 SERIES; 3000 LBS. W.P.
- 1 QRC CAMERON 10"-1500 SERIES; 5000 LBS. W.P.; DOUBLE B.O.P.
- CHOKER MANIFOLD 4 1/2"-15000 SERIES; 5000 LBS. W.P.; W/CAMERON HYDR. VALVE
- 1-POSITIVE; 1-ADJUSTABLE CHOKER
- 1-KOOMEY ACCUMULATOR; 7 STATION W/REMOTE CONTROL STAND; 3000 LBS. P.
- 1-12"-900 SERIES; 3000 LBS. P.S.I.; DOUBLE SHAFFER B.O.P.; TO BE USED FOR DRILLING INTERMEDIATE HOLE.



DATE: 9/8/78

AWN BY: M. WARTON  
DESIGNED: SAFETY DEPT

# APPLICATION FOR DRILLING

Pogo Producing Company

Sam Federal No. 2

Eddy County, New Mexico

In conjunction with permitting the captioned well for drilling in Section 26, T-25-S, R-28-E, Eddy County, New Mexico, Pogo Producing Company submits the following information in accordance with U.S.G.S. (NTL-6) letter dated July 1, 1976.

1. The surface formation in Quaternary sand and gravel.

2. Estimated tops of geologic markers as follows:

Rustler Anhydrite	1060'	Wolfcamp	9420'
Salt	1880'	Strawn Limestone	12080'
Delaware Lime	2580'	Atoka	12225'
Delaware Sand	2610'	Morrow Lime	12710'
Bone Springs	6300'		

3. The depths at which oil, gas or water is expected are: 2610', 6300', 12,225' 12,710'.

4. Casing Program and Cement:

Surface: 20" 94# H-40 ST&C @ 600' with 900 sxs Cl C with 2%  $\text{CaCl}_2$  + 1/4# Flocele per sx. Circulate cement.

Intermediate: 13 3/8" 61# K-55 ST&C @ 2600' with 2000 sxs Lt with 1/4# Flocele, 5# Gilsonite & 15# salt per sx plus 300 sxs Cl C w/3# salt per sx. Circulate cement.

Intermediate: 9 5/8" 40# N-80 & S-95, 43.50# S-95 @ 9440' with 1000 sxs Cl H 50-50 POZ with additives, top of cement to cover any productive zones.

Intermediate: 7" 29# & 32# S-95 LT&C @ 12,400' with 600 sxs Cl H with additives.

Production: 4 1/2" 11.6# S-95 LT&C @ 13,400' with 200 sxs Cl H with additives.

5. Blowout Preventors: From 600' to 2600'-20" Hydril. From 2600' to 9440'-12" GK Hydril 900 series. From 9440' to 13,400' - 10" Cameron QRC 1500 series. (The kill line and choke manifold are described on attached sketch) BOE will be tested daily and entered on daily drilling log.
6. Circulating Medium: Steel and earthen pits will be used to hold drilling fluids and cuttings. The drilling mud program is as follows: spud mud to 600', brine to 2600', drill out under 9 5/8" with cut-brine to top of Wolfcamp (9.2 - 9.8 ppg), KCL-Polymer brine to total depth.
7. The rig will be equipped with safety devices such as Kelly cock, drill pipe float, full opening stabbing valve and inside BOP, operational tests will be performed periodically and results noted on tour sheets.
8. Drill stem tests are possible for the Delaware, Bone Springs, Strawn, Atoka, and Morrow zones.

9. Ten foot samples of cuttings will be caught from the base of the surface pipe 600' to total depth. A mud logging unit is planned from the base of the first intermediate to total depth.
10. Adequate electrical and resistivity logs will be run from total depth to the base of the intermediate at 2600'. The gamma ray will be run to the surface.
11. No abnormal temperature or additional hazards are expected to be encountered.
12. The anticipated starting date is December 23, 1982 with the completion expected by March 15, 1983.

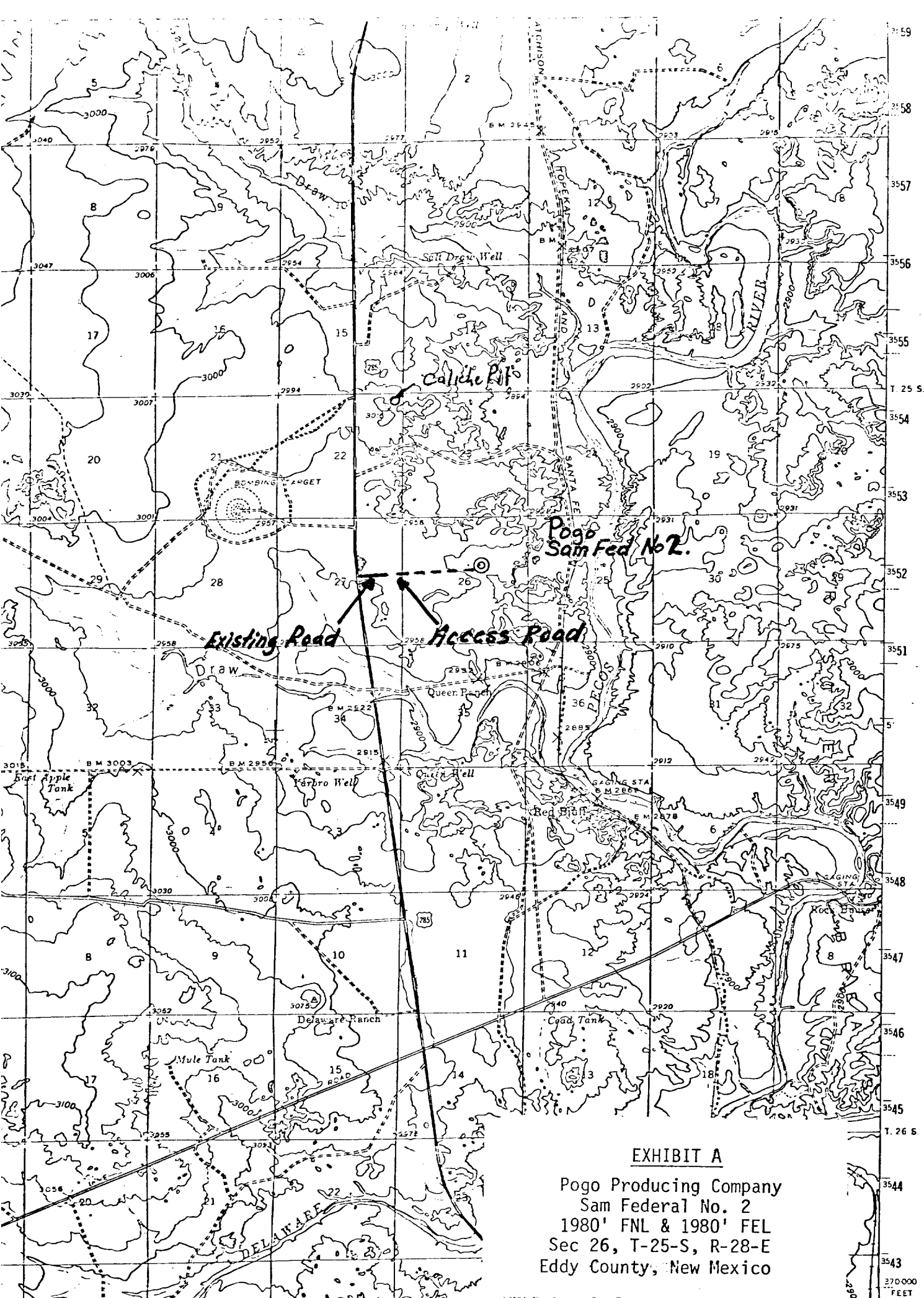
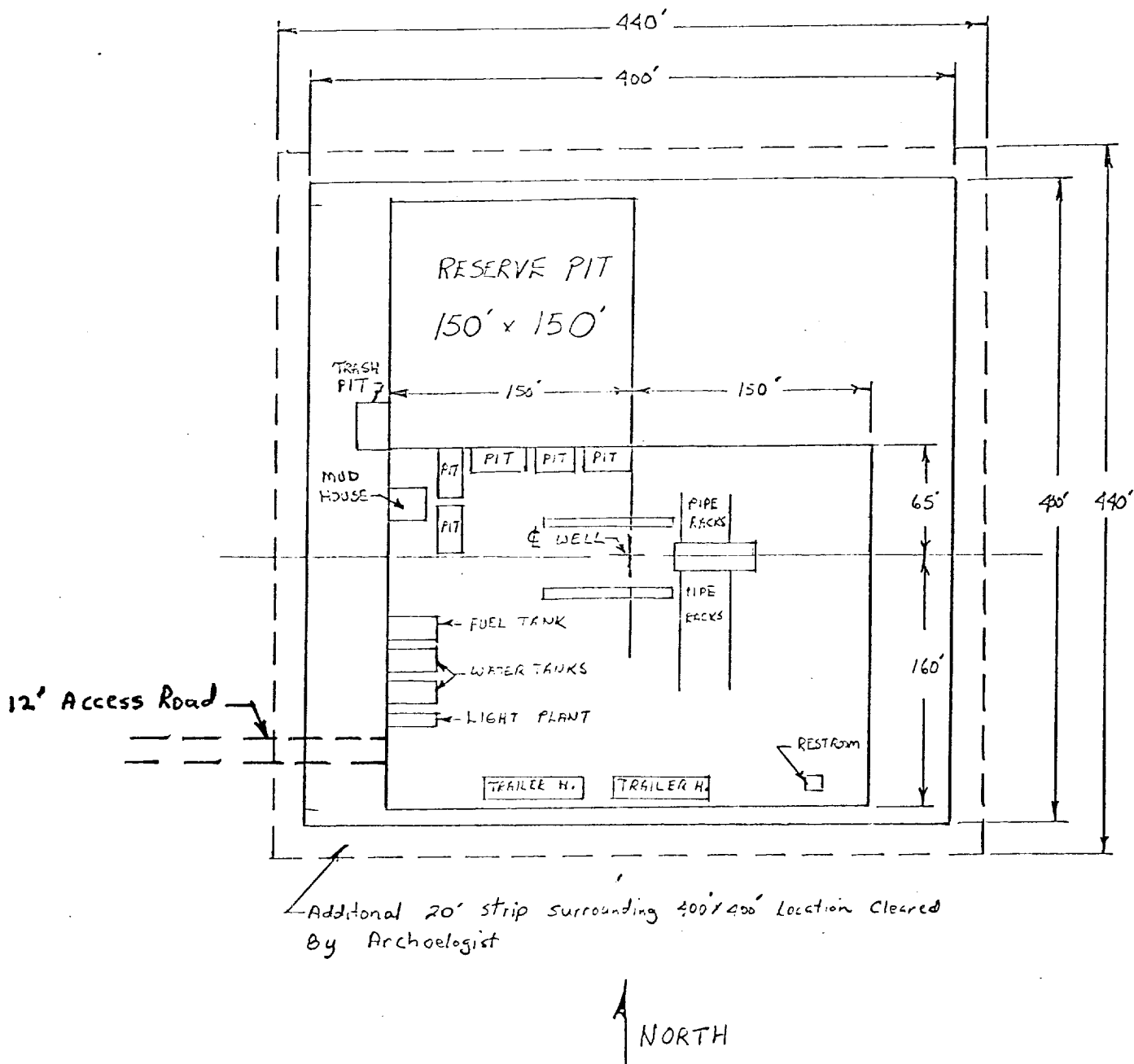


EXHIBIT A

Pogo Producing Company  
Sam Federal No. 2  
1980' FNL & 1980' FEL  
Sec 26, T-25-S, R-28-E  
Eddy County, New Mexico



### EXHIBIT C

Pogo Producing Company  
 Sam Federal No. 2  
 1980' FNL & 1980' FEL  
 Sec 26, T-25-S, R-28-E  
 Eddy County, New Mexico