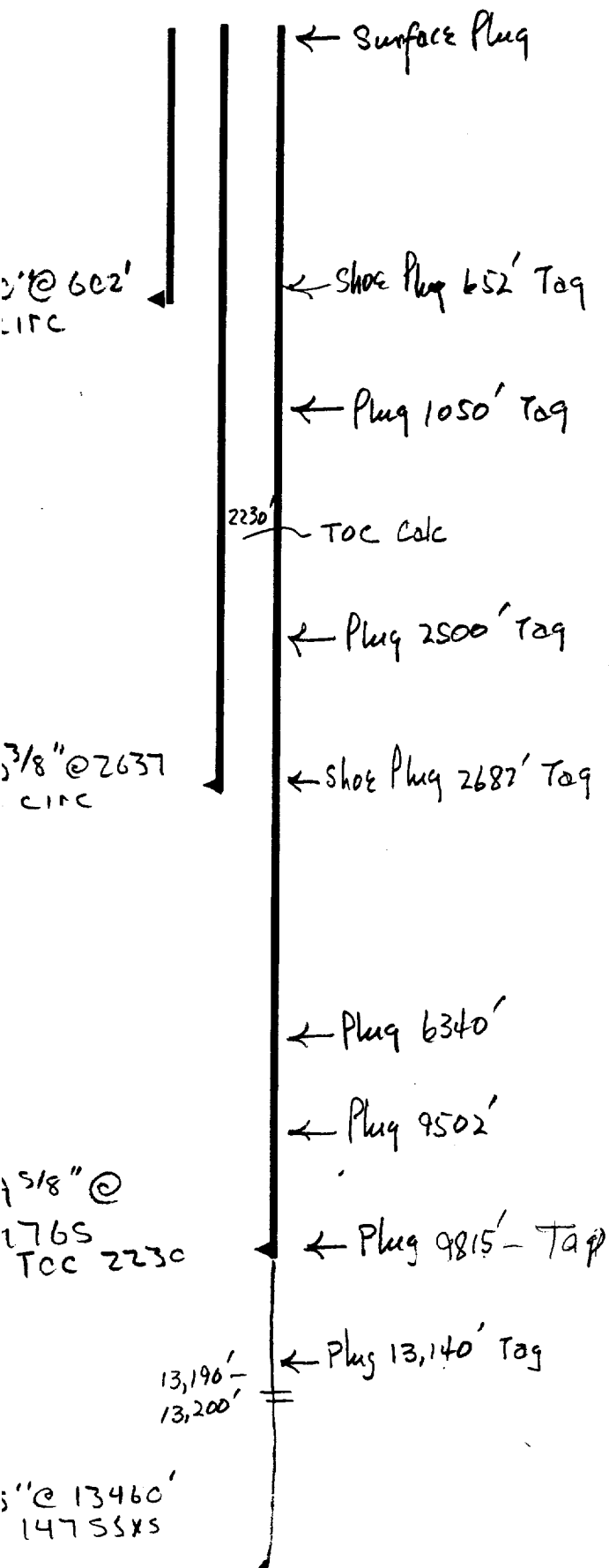


Operator Pogo Producing
 Well Sam Federal #2
 Unit G Section 26 Township 25 Range 28
 API # 30-015-24364

TOPS

Rustler	790
Salado	1050
B Salt	2400
Delaware	2633
Beale Spring	6340
Wolfcamp	9502
Penn	-
Strawn	12002
Artoka	12164
Moran	12656



- * Contact OCD 24 hrs. prior to any work done.
- * Salt gel mud consisting of 10# brine with 25# of gel per barrel must be placed between each plug.
- * Install dry hole marker as per Rule 202.B.2
- * Plugs are to be set from point indicated up.
- * Plugs must not be less than 100' or 25 Sacks of cement, whichever is greater, unless specifically indicated.
- * Shoe and stub plugs will be 50' above and below shoe or stub and tagged.
- * Surface plug will be from 0' - 60'
- * Where plugs are required, cement must be placed inside and outside of all casing string(s) in the correct footage or sacks required, if no cement exists.
- * Plugs to be tagged will be indicated.

[Signature]