

This API number on this well was mistakenly issued to Chama Petroleum Company's Southeastern Indian Basin Well #1-A in 23-22-23 which is a re-entry, not a new well.

We have now rectified this error, and have issued the API number 30-015-24384 to the Tom L. Ingram well, Federal Z #1-M in 14-26-30.

The Chama well was originally a Harvey A. Yates well which was P & A, then acquired by Chama for the purpose of re-entering and deepening, so it already has an API number.

NM OIL CONS. COMMISSION  
 UNITED STATES OF AMERICA  
 DEPARTMENT OF THE INTERIOR  
 GEOLOGICAL SURVEY

SUBMIT IN TRIPLICATE\*  
 (Other instructions on reverse side)

Form approved.  
 Budget Bureau No. 42-R1425.

487  
 30-015-24384

**APPLICATION FOR PERMIT TO DRILL, DEEPEN, OR PLUG BACK**

1a. TYPE OF WORK  
 DRILL       DEEPEN       PLUG BACK

b. TYPE OF WELL  
 OIL WELL       GAS WELL       OTHER       SINGLE ZONE       MULTIPLE ZONE

2. NAME OF OPERATOR  
 TOM L. INGRAM

3. ADDRESS OF OPERATOR  
 P. O. Box 1757, Roswell, NM 88201

4. LOCATION OF WELL (Report location clearly and in accordance with any State requirements.)  
 At surface: 330' FSL & ~~660'~~ 760' FWL, Sec 14  
 At proposed prod. zone: same  
 O. C. D. ARTESIA, OFFICE

14. DISTANCE IN MILES AND DIRECTION FROM NEAREST TOWN OR POST OFFICE\*  
 30 miles South east of Loving, NM

10. DISTANCE FROM PROPOSED\* LOCATION TO NEAREST PROPERTY OR LEASE LINE, FT. (Also to nearest drlg. unit line, if any)      660'  
 16. NO. OF ACRES IN LEASE      520

18. DISTANCE FROM PROPOSED LOCATION\* TO NEAREST WELL, DRILLING, COMPLETED, OR APPLIED FOR, ON THIS LEASE, FT.      N/A  
 19. PROPOSED DEPTH      5000'

21. ELEVATIONS (Show whether DF, RT, GR, etc.)  
 20. ROTARY OR CABLE TOOLS      Rotary  
 22. APPROX. DATE WORK WILL START\*      1-20-83

23. PROPOSED CASING AND CEMENTING PROGRAM

SIZE OF HOLE	SIZE OF CASING	WEIGHT PER FOOT	SETTING DEPTH	QUANTITY OF CEMENT
17	13 3/8	48#	350'	Circ
12 1/4	8 5/8	24# 32#	3600'	250 sx
7 7/8	5 1/2	15.5#	5000'	750 sx

Plug back to base of well

Drill to TD, Log, Case, cement, perforate, stimulate, & complete.

BOP will be used.

RECEIVED

DEC 10 1982  
 SERVICE MEXICO

IN ABOVE SPACE DESCRIBE PROPOSED PROGRAM: If proposal is to deepen or plug back, give data on present productive zone and proposed new productive zone. If proposal is to drill or deepen directionally, give pertinent data on subsurface locations and measured and true vertical depths. Give blowout preventer program, if any.

24. SIGNED: Tom Ingram TITLE: Operator DATE: 12-15-82

(This space for Federal or State office use)  
 (Orig. Sgd.) GEORGE H. STEWART  
 PERMIT NO. \_\_\_\_\_ APPROVAL DATE \_\_\_\_\_

APPROVED BY: \_\_\_\_\_ TITLE: \_\_\_\_\_ DATE: \_\_\_\_\_

CONDITIONS OF APPROVAL, IF ANY:  
 JAMES A. GILLHAM  
 DISTRICT SUPERVISOR

JAN 14 1983

\*See Instructions On Reverse Side

Posted @ 1-13-83

AMENDED

NEW MEXICO OIL CONSERVATION COMMISSION  
WELL LOCATION AND ACREAGE DEDICATION PLAT

Form C-102  
Supersedes C-128  
Effective 1-1-65

All distances must be from the outer boundaries of the Section.

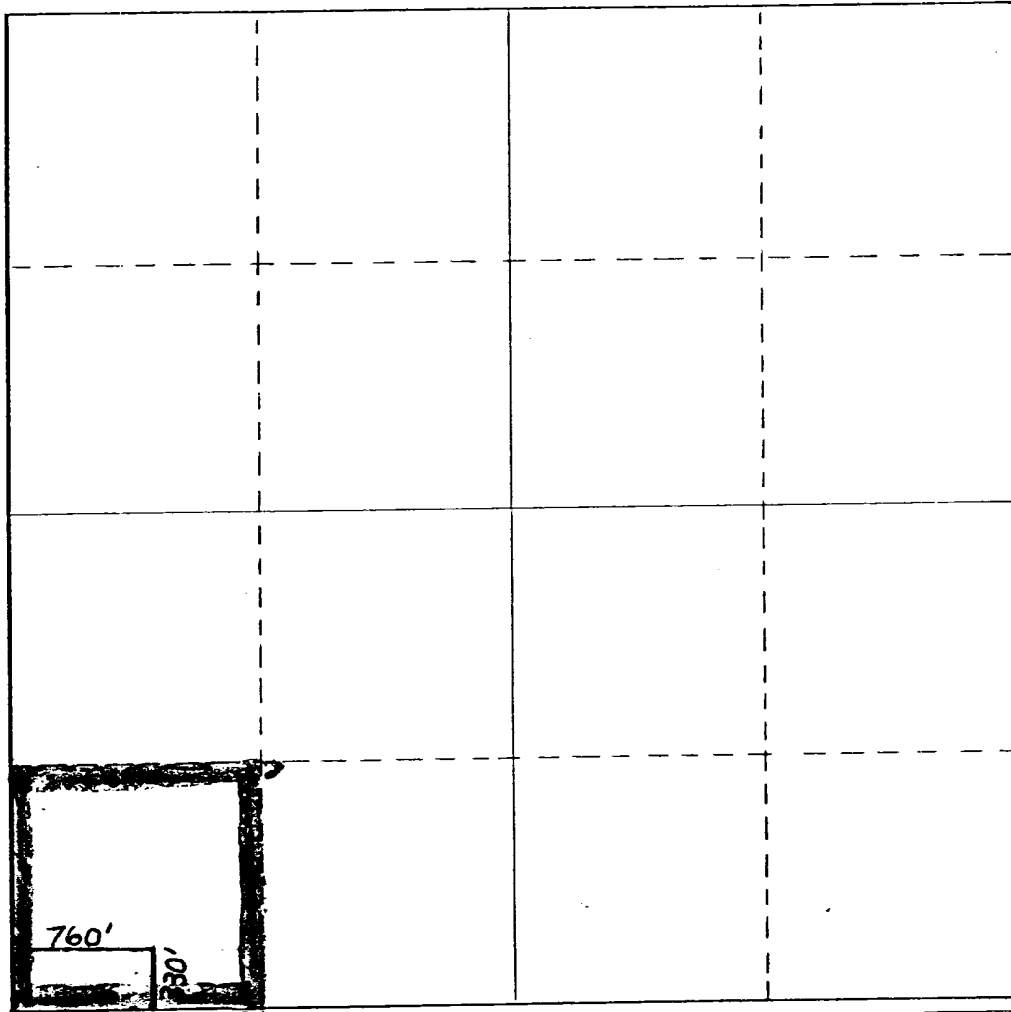
Operator <b>TOM L. INGRAM</b>		Lease <b>Federal Z</b>		Well No. <b>1</b>
Unit Letter <b>M</b>	Section <b>14</b>	Township <b>26 South</b>	Range <b>30 East</b>	County <b>Eddy</b>
Actual Footage Location of Well: <b>330</b> feet from the <b>South</b> line and <b>760</b> feet from the <b>West</b> line				
Ground Level Elev. <b>3122.</b>	Producing Formation <b>Cherry Canyon</b>	Pool <b>Wildcat</b>	Dedicated Acreage: <b>40</b> Acres	

1. Outline the acreage dedicated to the subject well by colored pencil or hachure marks on the plat below.
2. If more than one lease is dedicated to the well, outline each and identify the ownership thereof (both as to working interest and royalty).
3. If more than one lease of different ownership is dedicated to the well, have the interests of all owners been consolidated by communitization, unitization, force-pooling, etc?

Yes  No If answer is "yes," type of consolidation \_\_\_\_\_

If answer is "no," list the owners and tract descriptions which have actually been consolidated. (Use reverse side of this form if necessary.) \_\_\_\_\_

No allowable will be assigned to the well until all interests have been consolidated (by communitization, unitization, forced-pooling, or otherwise) or until a non-standard unit, eliminating such interests, has been approved by the Commission.



CERTIFICATION

I hereby certify that the information contained herein is true and complete to the best of my knowledge and belief.

*Tom L. Ingram*  
Name

Tom L. Ingram

Position  
Operator

Company  
Tom L. Ingram

Date  
January 12, 1983

*DAN R. REDDY*  
I hereby certify that the well location shown on this plat was plotted from field notes of actual surveys made by me or under my supervision, and that the same are true and correct to the best of my knowledge and belief.  
*DAN R. REDDY*  
REGISTERED PROFESSIONAL ENGINEER

Date Surveyed  
December 11, 1982

Registered Professional Engineer and/or Land Surveyor

*Dan R. Reddy*  
Certificate No.

NM PE&LS #5412

0 330 660 990 1320 1650 1980 2310 2640 2000 1500 1000 500 0

MEXICO OIL CONSERVATION COMMISS. N  
WELL LOCATION AND ACREAGE DEDICATION PLAT

Form C-102  
Supersedes C-128  
Effective 1-1-65

All distances must be from the outer boundaries of the Section.

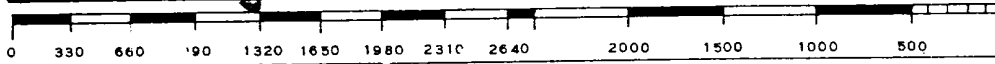
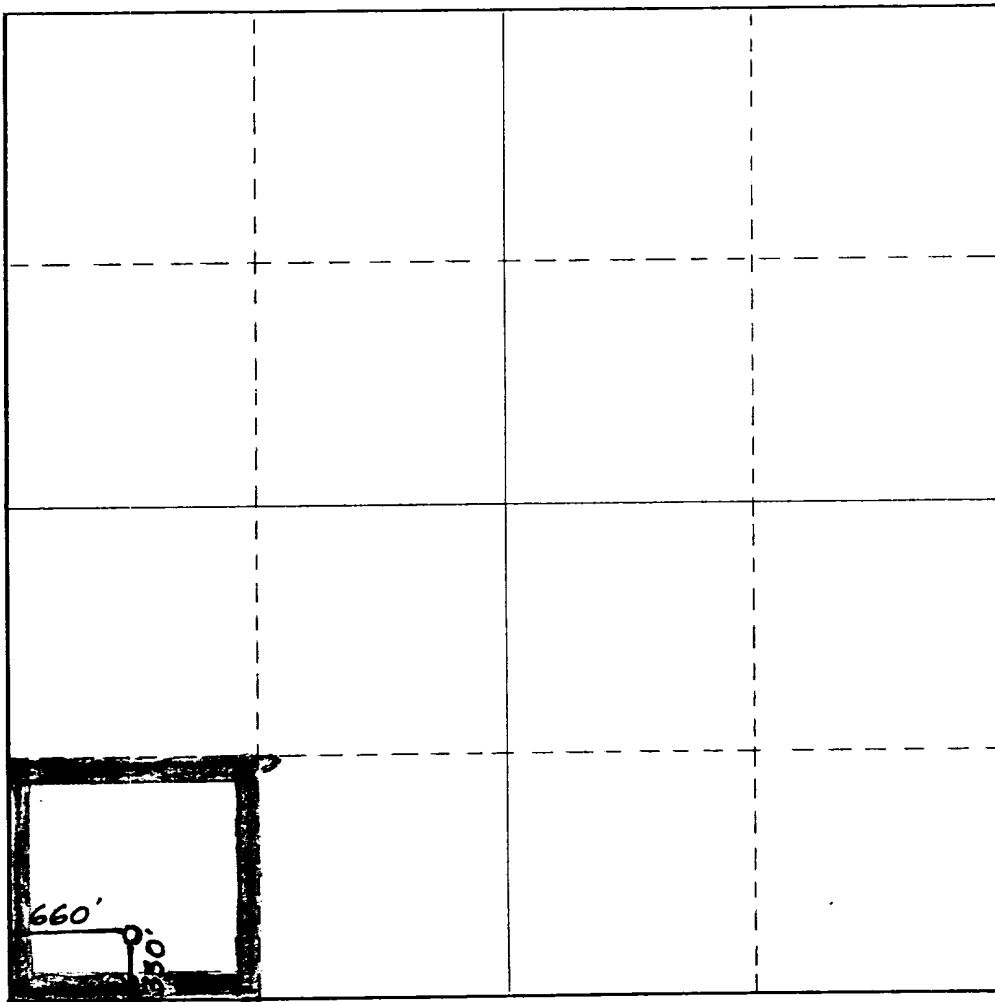
Operator <b>TOM L. INGRAM</b>		Lease <b>Federal Z</b>		Well No. <b>1</b>
Unit Letter <b>M</b>	Section <b>14</b>	Township <b>26 South</b>	Range <b>30 East</b>	County <b>Eddy</b>
Actual Footage Location of Well: <b>330</b> feet from the <b>South</b> line and <b>660</b> feet from the <b>West</b> line				
Ground Level Elev. <b>3122.</b>	Producing Formation <b>Cherry Canyon</b>	Pool <b>Wildcat</b>	Dedicated Acreage: <b>40</b> Acres	

1. Outline the acreage dedicated to the subject well by colored pencil or hachure marks on the plat below.
2. If more than one lease is dedicated to the well, outline each and identify the ownership thereof (both as to working interest and royalty).
3. If more than one lease of different ownership is dedicated to the well, have the interests of all owners been consolidated by communitization, unitization, force-pooling, etc?

Yes  No If answer is "yes," type of consolidation \_\_\_\_\_

If answer is "no," list the owners and tract descriptions which have actually been consolidated. (Use reverse side of this form if necessary.) \_\_\_\_\_

No allowable will be assigned to the well until all interests have been consolidated (by communitization, unitization, forced-pooling, or otherwise) or until a non-standard unit, eliminating such interests, has been approved by the Commission.



CERTIFICATION

I hereby certify that the information contained herein is true and complete to the best of my knowledge and belief.

*Tom L. Ingram*  
Name

Tom L. Ingram

Position  
Operator

Company  
Tom L. Ingram

Date  
December 14, 1982

I hereby certify that the well location shown on this plat was plotted from field notes of actual surveys made by me or under my supervision, and that the same is true and correct to the best of my knowledge and belief.

Date Surveyed  
December 11, 1982

Registered Professional Engineer and/or Land Surveyor

*Dan R. Reddy*  
Certificate No.

NM PE&LS #5412

APPLICATION FOR DRILLING

TOM L. INGRAM  
Well No. 1 Federal "Z"  
330' FSL & 660' FWL Sec. 14, T-26-S, R-30-E  
Eddy County, New Mexico  
Lease New Mexico 24777  
(Exploratory Well)

In conjunction with permitting subject well for drilling in Section 14, Township 26 South, Range 30 East, N.M.P.M., Eddy County, New Mexico, Tom L. Ingram submits the following points of pertinent information:

1. The geologic surface formation is Quaternary.
2. The estimated tops of geologic markers are as follows:

Rustler Anh	1600'
Salt	2750'
Delaware Sd	3600'
Cherry Canton	4550'
3. The depth at which water, oil or gas are expected to be encountered is:

2900'.
4. Casing Program:

13 3/8" 48# (New) Set at 350'; circulated cement, 8 5/8" 24# (New) set at 3600'; cemented w/150 sx, 5 1/2" 15.5# (New) set at 5000'; cemented w/750 sx.
5. Blowout Preventors:

Refer to attached Exhibit "A".
6. Circulating Medium:

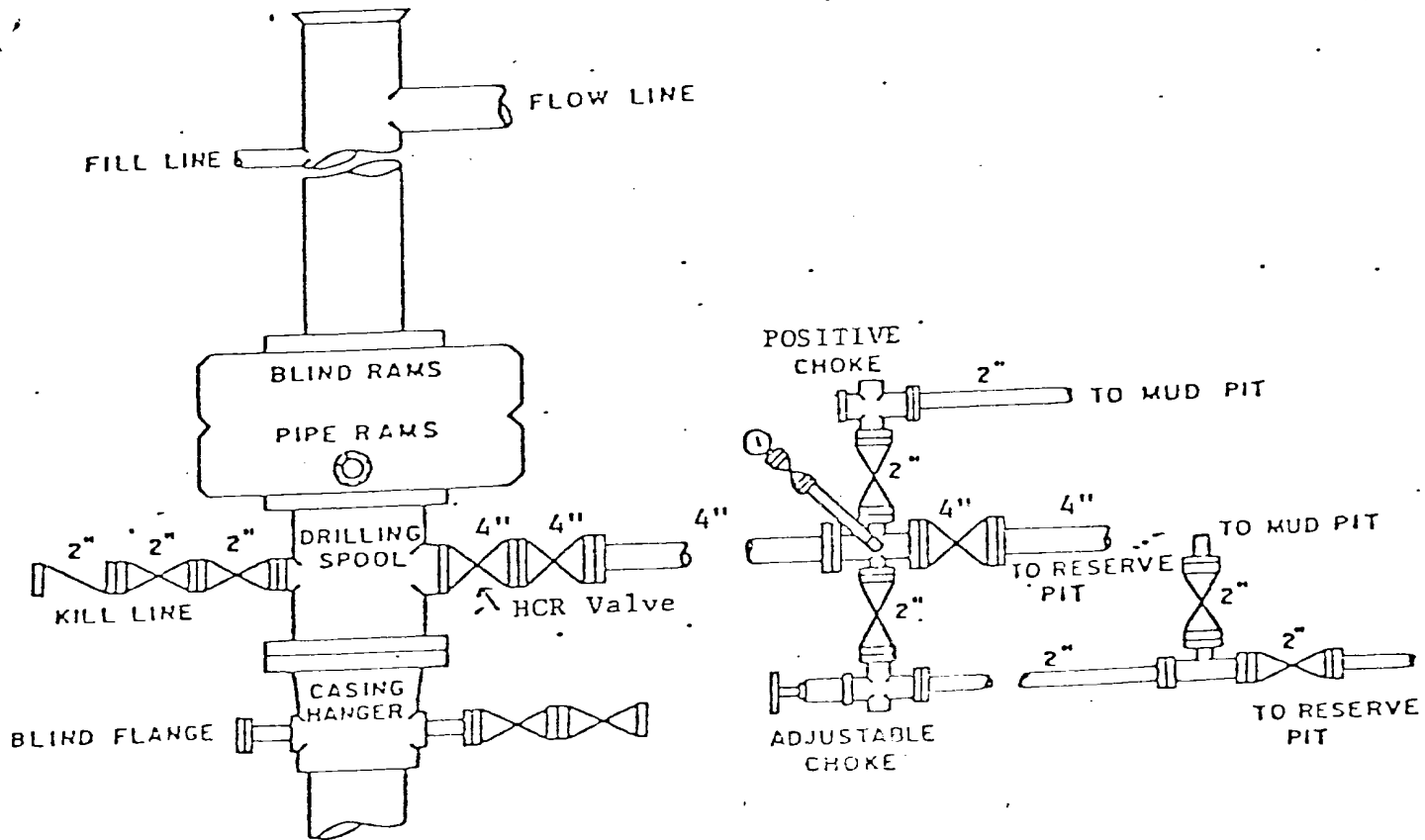
Earthen pits will be used to hold mud and cuttings and drilling fluids as follows:  
  
Fresh water gel mud to 350'. Native mud and Brine water to 2800'. Reduce Water Loss to 25 cc and raise Viscosity to 35 from 2800' to 3600'. Controlled Brine from 3600' to 4400'. Reduce Water Loss to 25cc and raise Viscosity to 34 from 4400' to TD for logging.
7. The rig will be equipped with safety devices such as Kelly Cock, drill pipe float, full opening stabbing valve, inside drill pipe, B.O.P., etc. Operational tests will be run weekly and results noted on tour sheets.
8. Drill stem tests:

One (1) Drill stem test will be run through the Delaware Sand and Two (2) in Cherry Canyon.
9. No abnormal pressures or temperatures or potential hazards are expected to be encountered.
10. Anticipated starting date is January 20, 1983, with completion of

TOM L. INGRAM FEDERAL "Z" No. 1  
330' FSL & 660' FWL  
Section 14, T-26-S, R-30-E,  
Eddy County, New Mexico

EXHIBIT "A" APPLICATION FOR DRILLING

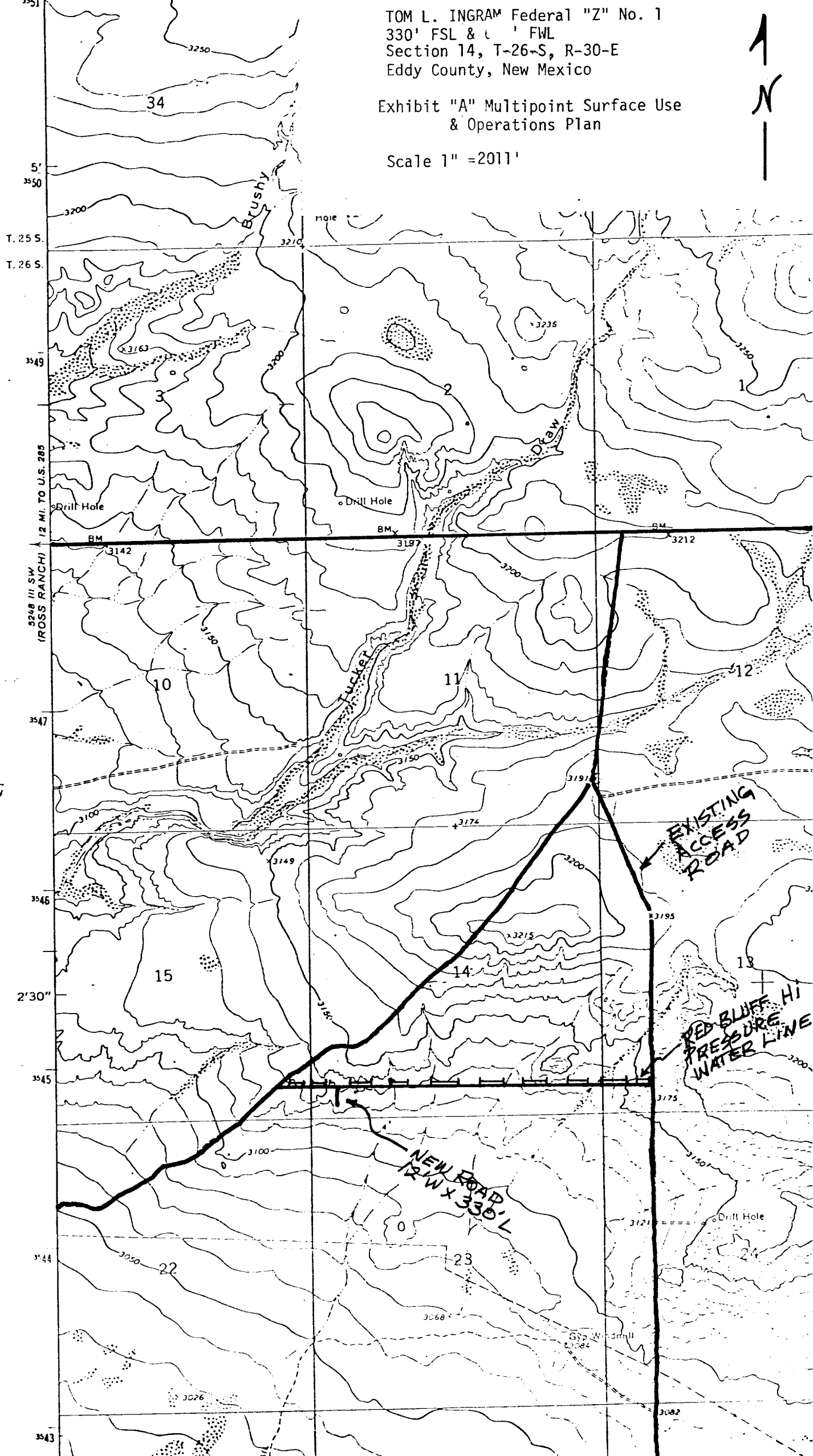
1 - 10<sup>0</sup> Shaeffer Double BOP 900 Series, 3000 WP



TOM L. INGRAM Federal "Z" No. 1  
330' FSL & 1' FWL  
Section 14, T-26-S, R-30-E  
Eddy County, New Mexico

Exhibit "A" Multipoint Surface Use  
& Operations Plan

Scale 1" = 2011'



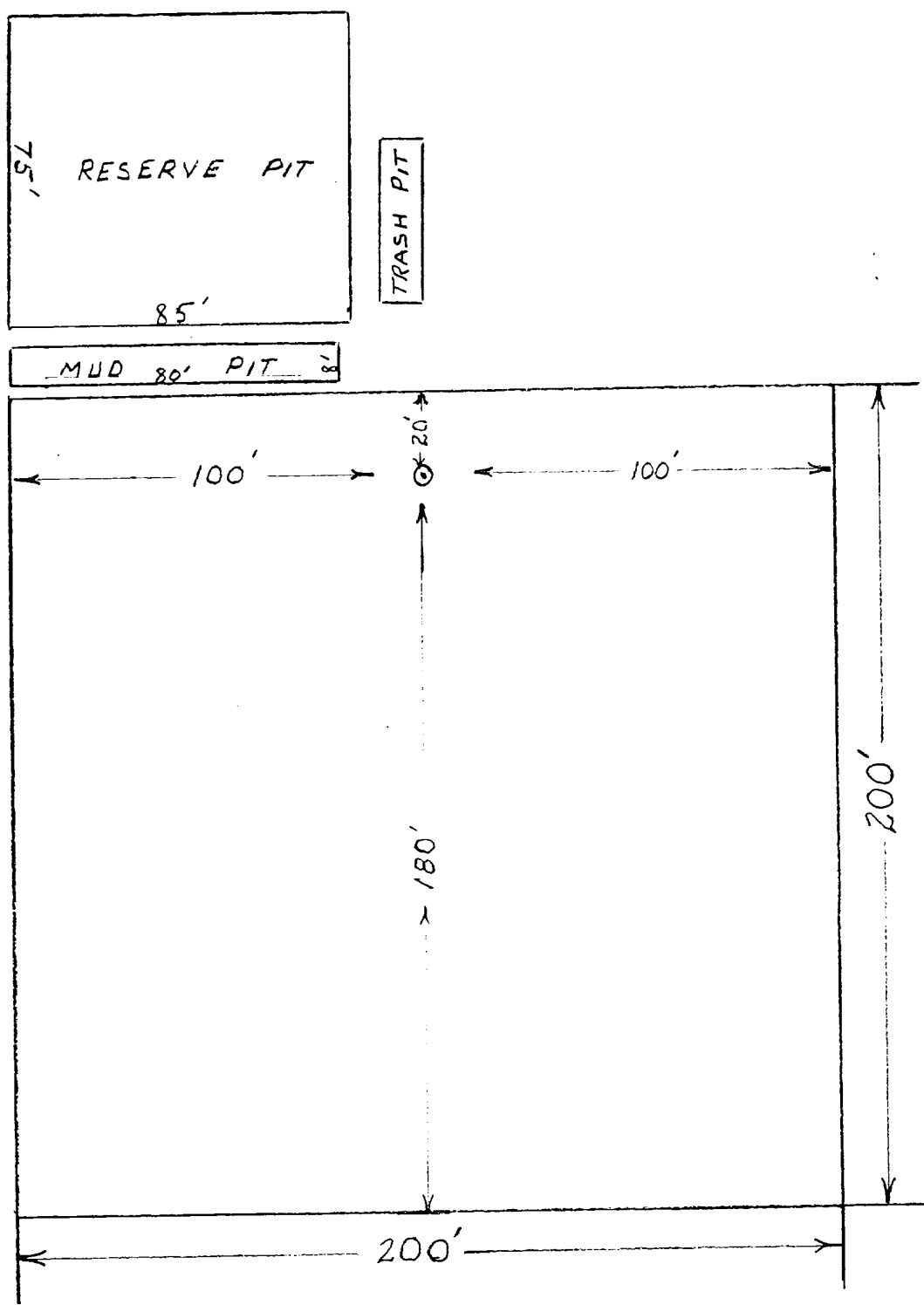
351  
5'  
350  
T. 25 S.  
T. 26 S.  
349  
347  
346  
2'30"  
345  
344  
343

12 MI. TO U.S. 285  
5248 III SW  
(ROSS RANCH)

EXISTING  
ACCESS  
ROAD

RED BLUFF HI  
PRESSURE  
WATER LINE

NEW ROAD  
12 W x 330 L



TOM L. INGRAM FEDERAL "Z" NO. 1  
330" FSL & 660' FWL  
Section 14, T-26-S, R-30-E  
Eddy County, N.M.

Exhibit "C" Multipoint Surface Use &  
Operations Plan