

UNITED STATES DEPARTMENT OF THE INTERIOR  
GEOLOGICAL SURVEYNM OIL CONSERVATION COMMISSION  
DD  
Artesia, NM 88210

## APPLICATION FOR PERMIT TO DRILL, DEEPEN, OR PLUG BACK

## 1a. TYPE OF WORK

DRILL ☒DEEPEN ☐PLUG BACK ☐

## b. TYPE OF WELL

OIL WELL ☒GAS WELL ☐

OTHER

SINGLE ZONE ☒MULTIPLE ZONE ☐

## 2. NAME OF OPERATOR

WORTH PETROLEUM COMPANY

## 3. ADDRESS OF OPERATOR

P. O. BOX 17406, FORT WORTH, TEXAS 76102

## 4. LOCATION OF WELL (Report location clearly and in accordance with any State requirements.)\*

At surface

1665' FSL AND 330' FEL OF SECTION 27

At proposed prod. zone

## 14. DISTANCE IN MILES AND DIRECTION FROM NEAREST TOWN OR POST OFFICE\*

16 AIR MILES SOUTH-SOUTHEAST OF MALAGA, NEW MEXICO

## 15. DISTANCE FROM PROPOSED\*

LOCATION TO NEAREST  
PROPERTY OR LEASE LINE, FT.  
(Also to nearest drilg. unit line, if any)

330'

## 16. NO. OF ACRES IN LEASE

1318.02

17. NO. OF ACRES ASSIGNED  
TO THIS WELL

40

18. DISTANCE FROM PROPOSED LOCATION\*  
TO NEAREST WELL, DRILLING, COMPLETED,  
OR APPLIED FOR, ON THIS LEASE, FT.

-

## 19. PROPOSED DEPTH

6200'

## 20. ROTARY OR CABLE TOOLS

ROTARY

## 21. ELEVATIONS (Show whether DF, RT, GR, etc.)

2869.2 GR

## 22. APPROX. DATE WORK WILL START\*

APRIL 15, 1983

## 23.

## PROPOSED CASING AND CEMENTING PROGRAM

SIZE OF HOLE	SIZE OF CASING	WEIGHT PER FOOT	SETTING DEPTH	QUANTITY OF CEMENT
11"	8-5/8"	24#	450'	SUFFICIENT TO CIRCULATE
7-7/8"	4-1/2"	9.5 & 10.5#	6200'	SUFFICIENT TO FILL TO 2400 FEET

PRODUCING ZONE WILL BE PERFORATED AND STIMULATED AS NECESSARY.

SEE ATTACHED FOR: SUPPLEMENTAL DRILLING DATA  
BOP SKETCH  
SURFACE USE AND OPERATIONS PLAN  
SURFACE RESTORATION REQUIREMENTS

RECEIVED

APR 5 1983

OIL & GAS  
MINERALS MGMT. SERVICE  
ROSWELL, NEW MEXICO

RECEIVED

APR 18 1983

O. C. D.  
ARTESIA, OFFICEPosted April 18 1983  
4-18-83

IN ABOVE SPACE DESCRIBE PROPOSED PROGRAM: If proposal is to deepen or plug back, give data on present productive zone and proposed new productive zone. If proposal is to drill or deepen directionally, give pertinent data on subsurface locations and measured and true vertical depths. Give blowout preventer program, if any.

## 24.

SIGNATURE

Arthur R. Brown

TITLE

Agent for  
WORTH PETROLEUM COMPANY

DATE APRIL 4, 1983

(This space for Federal or State office use)

## PERMIT NO.

## APPROVAL DATE

## APPROVED BY

## TITLE

## DATE

CONDITIONS OF APPROVAL, IF ANY:

\*See Instructions On Reverse Side

W MEXICO OIL CONSERVATION COMMISSION  
WELL LOCATION AND ACREAGE DEDICATION PLAT

Form C-102  
Supersedes C-128  
Effective 1-1-65

All distances must be from the outer boundaries of the Section

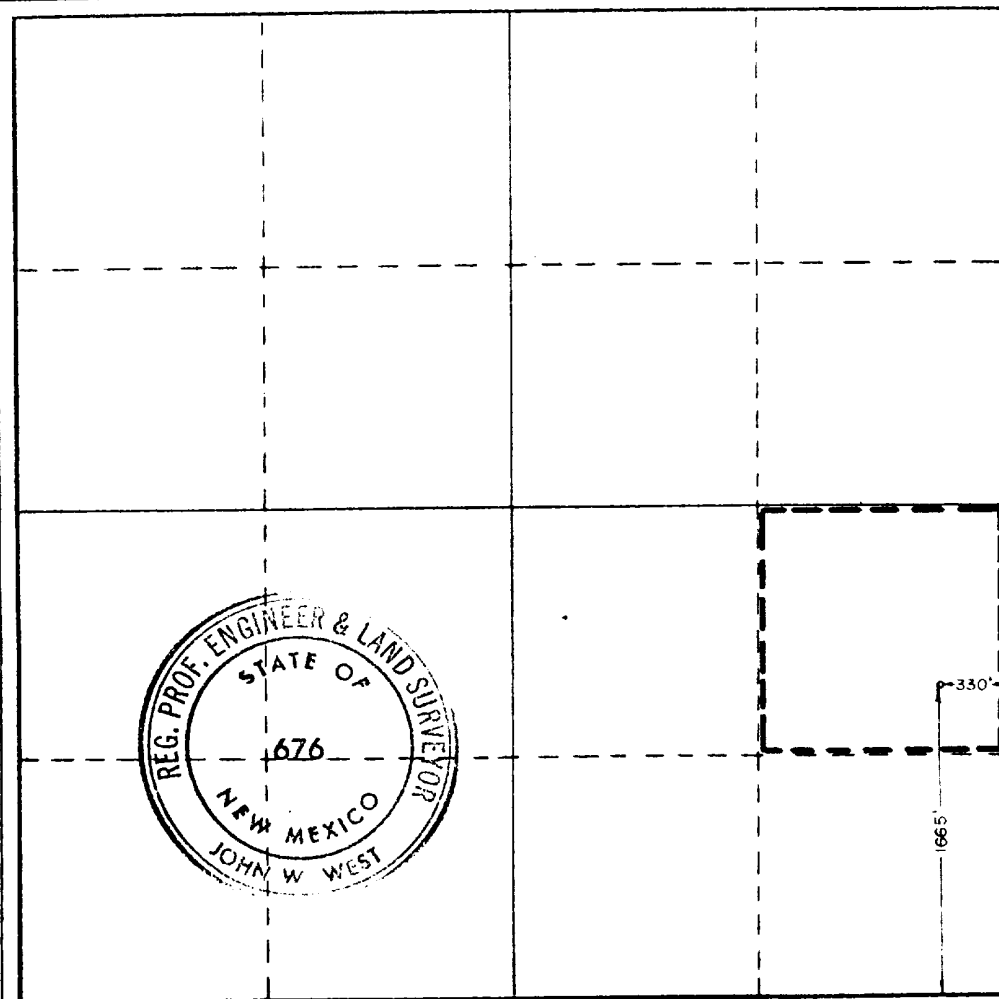
Operator <b>WORTH PETROLEUM CO.</b>			Lease <b>AMOCO FEDERAL</b>		Well No. <b>1</b>
Tract Letter <b>I</b>	Section <b>27</b>	Township <b>26 SOUTH</b>	Range <b>29 EAST</b>	County <b>EDDY</b>	
Actual Footage Location of Well: <b>1665</b> feet from the <b>SOUTH</b> line and <b>330</b> feet from the <b>EAST</b> line					
Ground Level Elev. <b>2869.2</b>	Producing Formation <b>CHERRY CANYON</b>		Pool <b>UNDES. BRUSHY DRAW-CHERRY CANYON</b>		Dedicated Acreage: <b>40</b> Acres

1. Outline the acreage dedicated to the subject well by colored pencil or hachure marks on the plat below.
2. If more than one lease is dedicated to the well, outline each and identify the ownership thereof (both as to working interest and royalty).
3. If more than one lease of different ownership is dedicated to the well, have the interests of all owners been consolidated by communitization, unitization, force-pooling, etc?

☐ Yes ☐ No If answer is "yes," type of consolidation \_\_\_\_\_

If answer is "no," list the owners and tract descriptions which have actually been consolidated. (Use reverse side of this form if necessary.) \_\_\_\_\_

No allowable will be assigned to the well until all interests have been consolidated (by communitization, unitization, forced-pooling, or otherwise) or until a non-standard unit, eliminating such interests, has been approved by the Commission.



CERTIFICATION

I hereby certify that the information contained herein is true and complete to the best of my knowledge and belief.

*Arthur R. Brown*  
Name: **Arthur R. Brown**

Position:  
**Agent**

Company:  
**WORTH PETROLEUM COMPANY**

Date:  
**APRIL 1, 1983**

I hereby certify that the well location shown on this plat was plotted from field notes of actual surveys made by me or under my supervision, and that the same is true and correct to the best of my knowledge and belief.

Date Surveyed:  
**3/23/83**

Registered Professional Engineer and/or Land Surveyor

*John W. West*

Certificate No.  
**JOHN W. WEST NO. 676**

## SUPPLEMENTAL DRILLING DATA

WORTH PETROLEUM COMPANY

WELL NO.1 AMOCO FEDERAL

1. SURFACE FORMATION: Quaternary.

2. TOPS OF GEOLOGIC MARKERS:

Bell Canyon	2855
Cherry Canyon	3800
Brushy Canyon	5400

3. ANTICIPATED POSSIBLE HYDROCARBON BEARING ZONES:

Bell Canyon	Oil
Cherry Canyon	Oil
Brushy Canyon	Oil

4. PROPOSED CASING AND CEMENTING PROGRAM:

<u>CASING SIZE</u>	<u>SETTING DEPTH</u>		<u>WEIGHT</u>	<u>GRADE</u>	<u>JOINT</u>
	<u>FROM</u>	<u>TO</u>			
8-5/8"	0	450	24#	K-55	STC
4-1/2"	0	5800	9.5#	K-55	STC
"	5800	6200	10.5#	K-55	STC

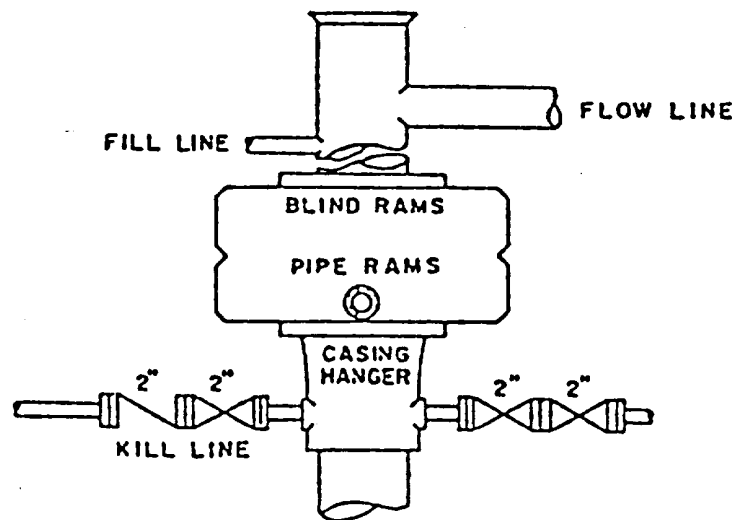
8-5/8" casing to be cemented with approximately 150 sacks of Class "C" cement. Cement to circulate.

4-1/2" casing to be cemented with sufficient Light cement, tailed-in with 200 sacks of Class "C" cement, to fill back to 2400 feet.

Equivalent or adequate grades and weights of casing may be substituted at time casing is run depending on availability.

5. PRESSURE CONTROL EQUIPMENT:

A 3000 psi working pressure, double ram type preventer will be in use



BOP STACK

SERIES 900

DEPTH INTERVAL

BELOW 8-5/8" CASING SEAT

BOP ARRANGEMENT

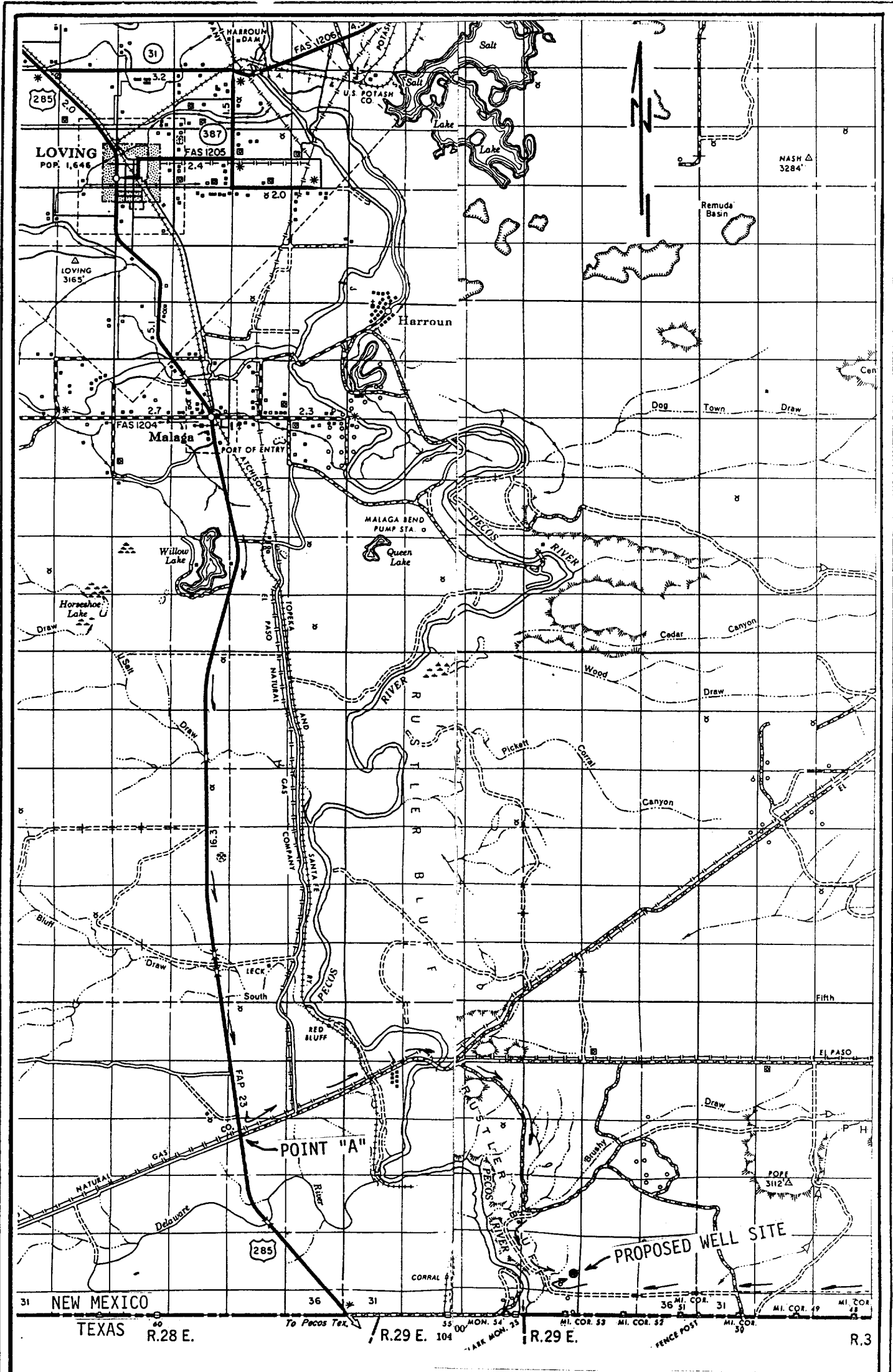
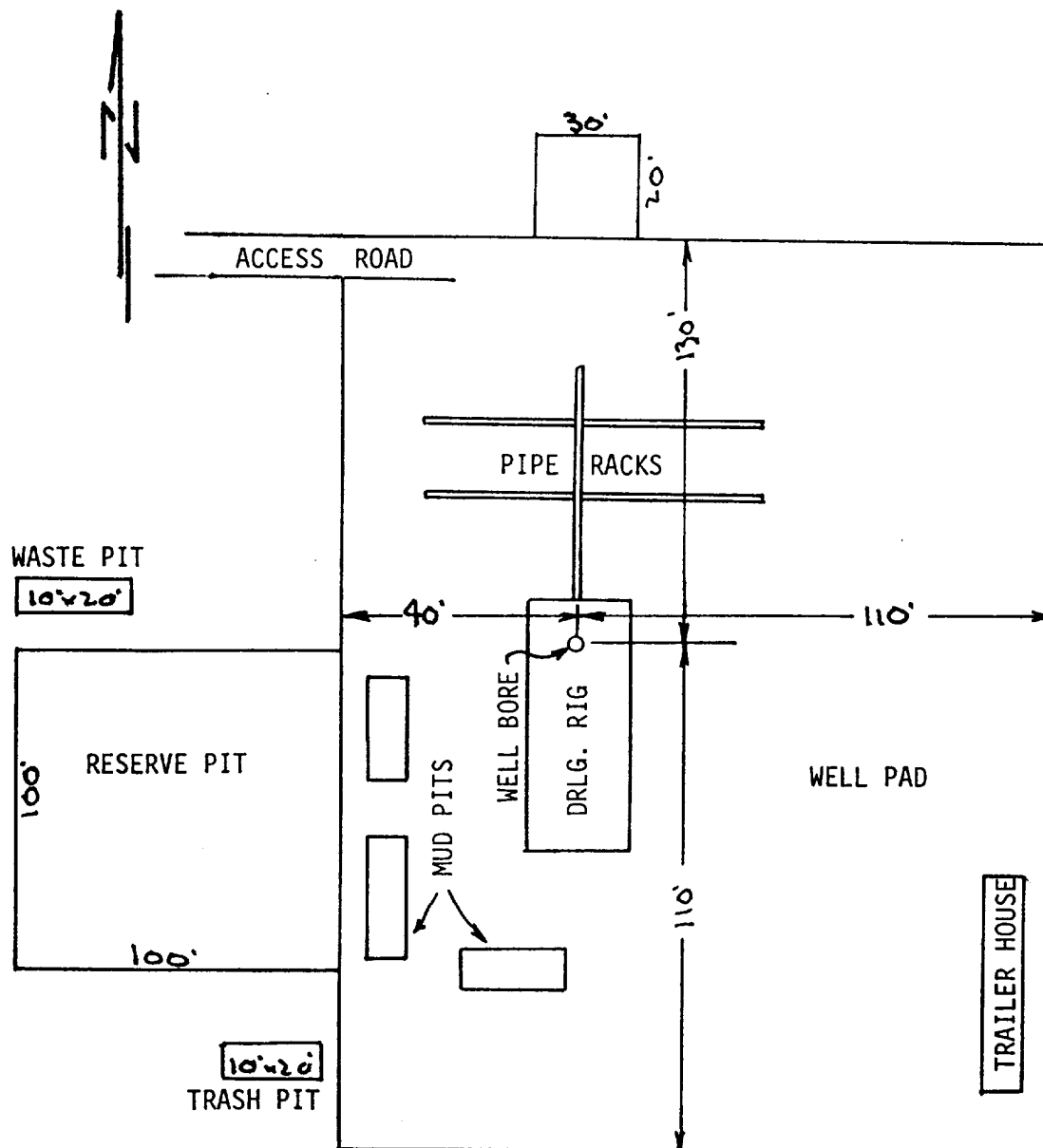


EXHIBIT "A"

WORTH PETROLEUM COMPANY  
WELL NO.1 AMOCO FEDERAL  
1665'FSL & 330'FEL SEC.27, T.26 S., R.29 E.  
EDDY COUNTY, N.M. SCALE: 1/2" = 1 MI.



# EXHIBIT "C"

WORTH PETROLEUM COMPANY  
WELL NO.1 AMOCO FEDERAL

DRILLING RIG LAYOUT  
SCALE: None

ARTHUR R. BROWN  
101 E. Marland  
Hobbs, New Mexico 88240  
Office (505) 397-2767  
Home (505) 392-5642

**PETROLEUM**  
**ENGINEERING & REGULATORY**  
**SERVICES**

JAMES A. KNAUF  
1501 W. Missouri  
Artesia, New Mexico 88210  
Phone (505) 746-4138

101 E. Marland, Suite 105  
Hobbs, New Mexico 88240

March 31, 1983

Bureau of Land Management  
Minerals Section  
P.O. Box 1857  
Roswell, New Mexico 88201

Gentlemen:

This is to advise that Worth Petroleum Company has contacted Mr. J. G. Ross, the surface owner, concerning surface restoration after completion of drilling operations at well No. 1 Amoco Federal, located in the NE $\frac{1}{4}$ SE $\frac{1}{4}$  of Section 27, T.26 S., R.29 E., Eddy County, New Mexico, lease NM-38636.

Work to be done after completion of drilling operations is as follows:

If the well is completed for production, the well location will be cleaned up, and the drilling pits will be filled as soon as they are dry.

If the well is plugged and abandoned, all pits will be filled and levelled, the well location will be cleaned up, and the well pad and access road will be left in place.

Sincerely,

  
Arthur R. Brown, Agent for  
WORTH PETROLEUM COMPANY

ARB/bb