

UNITED STATES  
DEPARTMENT OF THE INTERIOR  
GEOLOGICAL SURVEY

## APPLICATION FOR PERMIT TO DRILL, DEEPEN, OR PLUG BACK

## 1a. TYPE OF WORK

DRILL ☒DEEPEN ☐PLUG BACK ☐

## b. TYPE OF WELL

OIL  
WELL ☒GAS  
WELL ☐

OTHER

SINGLE  
ZONE ☒MULTIPLE  
ZONE ☐

## 2. NAME OF OPERATOR

WORTH PETROLEUM COMPANY ✓

## 3. ADDRESS OF OPERATOR

P. O. BOX 17406, FORT WORTH, TEXAS 76102

## 4. LOCATION OF WELL (Report location clearly and in accordance with any State requirements.)\*

At surface

1900' FNL AND 330' FEL OF SECTION 29

At proposed prod. zone

## 14. DISTANCE IN MILES AND DIRECTION FROM NEAREST TOWN OR POST OFFICE\*

16 AIR MILES SOUTH SOUTHEAST OF MALAGA, NEW MEXICO

## 15. DISTANCE FROM PROPOSED\*

LOCATION TO NEAREST  
PROPERTY OR LEASE LINE, FT.  
(Also to nearest drlg. unit line, if any)

330'

## 16. NO. OF ACRES IN LEASE

1318.02

17. NO. OF ACRES ASSIGNED  
TO THIS WELL

40

## 18. DISTANCE FROM PROPOSED LOCATION\*

TO NEAREST WELL, DRILLING, COMPLETED,  
OR APPLIED FOR, ON THIS LEASE, FT.

-

## 19. PROPOSED DEPTH

6200'

## 20. ROTARY OR CABLE TOOLS

ROTARY

## 21. ELEVATIONS (Show whether DF, RT, GR, etc.)

2873 GR

## 22. APPROX. DATE WORK WILL START\*

MAY 1, 1983

## 23.

## PROPOSED CASING AND CEMENTING PROGRAM

SIZE OF HOLE	SIZE OF CASING	WEIGHT PER FOOT	SETTING DEPTH	QUANTITY OF CEMENT
11"	8-5/8"	24#	450'	SUFFICIENT TO CIRCULATE
7-7/8"	4-1/2"	9.5# & 10.5#	6200'	SUFFICIENT TO FILL TO 2400 FEET

PRODUCING ZONE WILL BE PERFORATED AND STIMULATED AS NECESSARY.

SEE ATTACHED FOR: SUPPLEMENTAL DRILLING DATA  
BOP SKETCH  
SURFACE USE AND OPERATIONS PLAN  
RECEIVED

RECEIVED

APR 5 1983

OIL & GAS  
MINERALS MGMT. SERVICE  
ROSWELL, NEW MEXICO

APR 18 1983

O. C. D.  
ARTESIA, OFFICEPosted R.M. 9  
APR 18 1983  
4-21-83

IN ABOVE SPACE DESCRIBE PROPOSED PROGRAM: If proposal is to deepen or plug back, give data on present productive zone and proposed new productive zone. If proposal is to drill or deepen directionally, give pertinent data on subsurface locations and measured and true vertical depths. Give blowout preventer program, if any.

## 24.

SIGNED Arthur R. Brown TITLE Agent for WORTH PETROLEUM COMPANY DATE APRIL 4, 1983

(This space for Federal or State office use)

## PERMIT NO.

## APPROVAL DATE

APPROVED BY Amanda P. Hye  
CONDITIONS OF APPROVAL, IF ANY:TITLE Acting Asst. District  
Manager for MineralsDATE 4/11/83

\*See Instructions On Reverse Side

NEW MEXICO OIL CONSERVATION COMMISSION  
WELL LOCATION AND ACREAGE DEDICATION PLAT

Form C-102  
Supersedes C-128  
Effective 1-1-85

All distances must be from the outer boundaries of the Section.

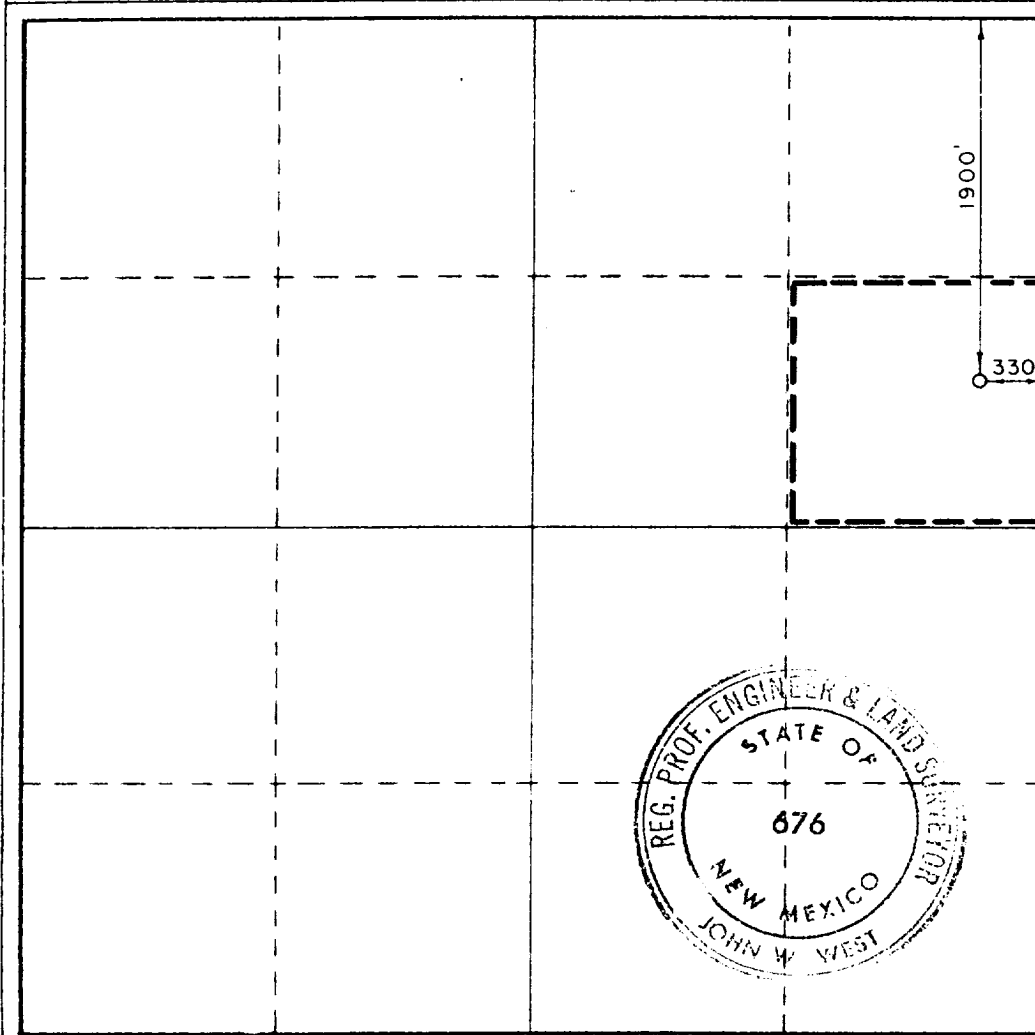
Operator <b>WORTH PETROLEUM CO.</b>			Lease <b>AMOCO FEDERAL</b>			Well No. <b>2</b>		
Unit Letter <b>H</b>	Section <b>29</b>	Township <b>26S</b>	Range <b>29E</b>	County <b>EDDY</b>				
Actual Footage Location of Well: <b>1900</b> feet from the <b>NORTH</b> line and <b>330</b> feet from the <b>EAST</b> line								
Ground Level Elev. <b>2873.0</b>	Producing Formation <b>CHERRY CANYON</b>		Pool <b>WILDCAT</b>			Dedicated Acreage: <b>40</b> Acres		

1. Outline the acreage dedicated to the subject well by colored pencil or hachure marks on the plat below.
2. If more than one lease is dedicated to the well, outline each and identify the ownership thereof (both as to working interest and royalty).
3. If more than one lease of different ownership is dedicated to the well, have the interests of all owners been consolidated by communitization, unitization, force-pooling, etc?

☐ Yes ☐ No If answer is "yes," type of consolidation \_\_\_\_\_

If answer is "no," list the owners and tract descriptions which have actually been consolidated. (Use reverse side of this form if necessary.) \_\_\_\_\_

No allowable will be assigned to the well until all interests have been consolidated (by communitization, unitization, forced-pooling, or otherwise) or until a non-standard unit, eliminating such interests, has been approved by the Commission.



CERTIFICATION

I hereby certify that the information contained herein is true and complete to the best of my knowledge and belief.

No. *Arthur R. Brown*  
Arthur R. Brown

Position  
Agent

Company  
WORTH PETROLEUM COMPANY

Date  
APRIL 1, 1983

I hereby certify that the well location shown on this plat was plotted from field notes of actual surveys made by me or under my supervision, and that the same is true and correct to the best of my knowledge and belief.

Date Surveyed  
MARCH 23, 1983

Registered Professional Engineer and/or Land Surveyor

*John W. West*  
Certificate No. JOHN W. WEST 676

0 330 660 990 1320 1650 1980 2310 2640 2970 3300 3630 3960 4290 4620 4950 5280 5610 5940 6270 6600

## SUPPLEMENTAL DRILLING DATA

WORTH PETROLEUM COMPANY

WELL NO.2 AMOCO FEDERAL

1. SURFACE FORMATION: Quaternary.

2. TOPS OF GEOLOGIC MARKERS:

Bell Canyon	2855
Cherry Canyon	3800
Brushy Canyon	5400

3. ANTICIPATED POSSIBLE HYDROCARBON BEARING ZONES:

Bell Canyon	Oil
Cherry Canyon	Oil
Brushy Canyon	Oil

4. PROPOSED CASING AND CEMENTING PROGRAM:

CASING SIZE	SETTING DEPTH		WEIGHT	GRADE	JOINT
	FROM	TO			
8-5/8"	0	450	24#	K-55	STC
4-1/2"	0	5800	9.5#	K-55	STC
"	5800	6200	10.5#	K-55	STC

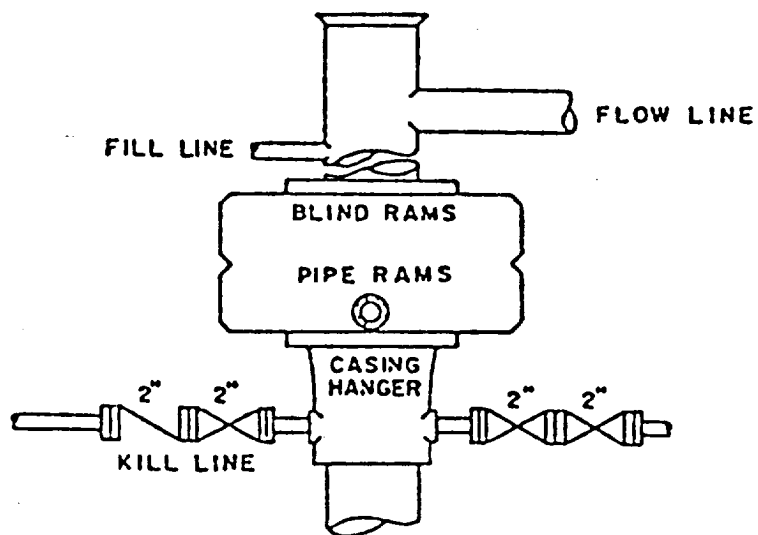
8-5/8" casing to be cemented with approximately 150 sacks of Class "C" cement. Cement to circulate.

4-1/2" casing to be cemented with sufficient Light cement, tailed-in with 200 sacks of Class "C" cement, to fill back to 2400 feet.

Equivalent or adequate grades and weights of casing may be substituted at time casing is run depending on availability.

5. PRESSURE CONTROL EQUIPMENT:

A 3000 psi working pressure, double ram type preventer will be in use



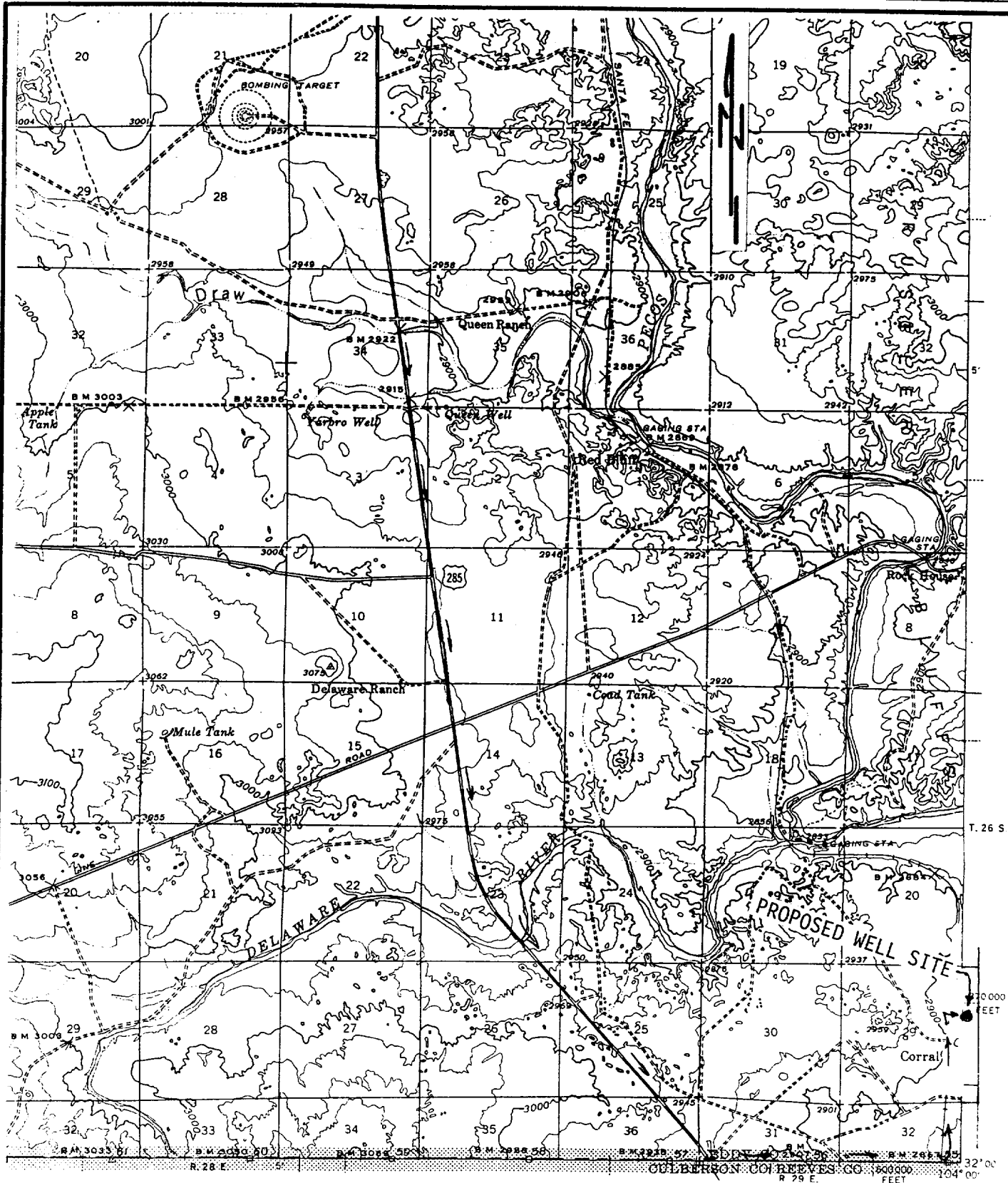
BOP STACK

SERIES 900

DEPTH INTERVAL

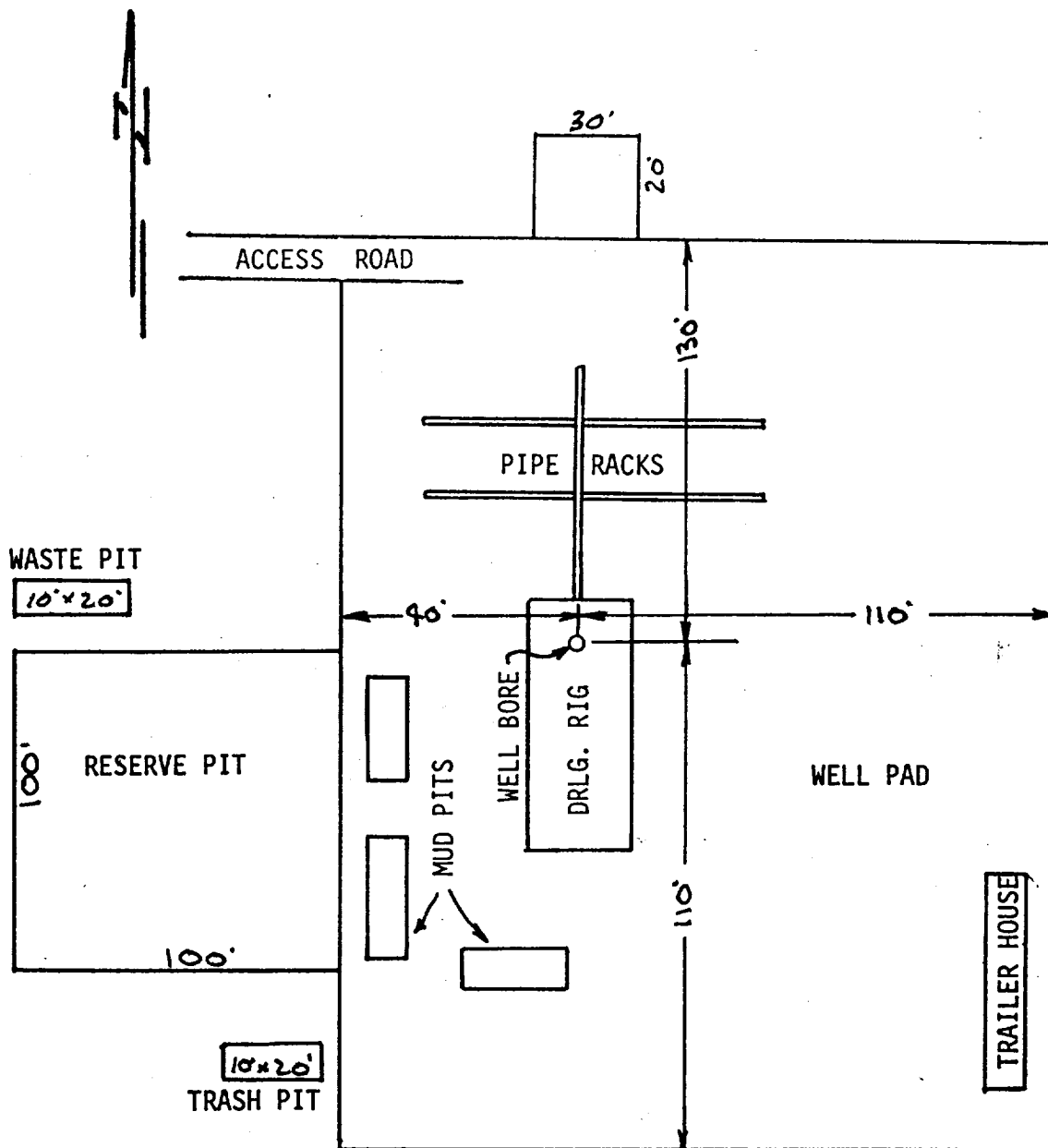
BELOW 8-5/8" CASING SEAT

BOP ARRANGEMENT



# EXHIBIT "D"

WORTH PETROLEUM COMPANY  
 WELL NO. 2 AMOCO FEDERAL  
 1900' FNL & 330' FEL SEC. 29, T. 26 S., R. 29 E.  
 EDDY COUNTY, N.M.  
 TOPO PLAT



### EXHIBIT "C"

WORTH PETROLEUM COMPANY  
WELL NO.2 AMOCO FEDERAL  
DRILLING RIG LAYOUT  
SCALE: None