

UNITED STATES
DEPARTMENT OF THE INTERIOR
GEOLOGICAL SURVEY

SUBMIT TO TRIUMPH STATE
(Other reverse side)

Form approved.
Budget Bureau No. 42-R1425.

JUN 17 1983

5. LEASE DESIGNATION AND SERIAL NO.

NM - 19423

6. IF INDIAN, ALLOTTEE OR TRIBE NAME

7. UNIT AGREEMENT NAME

8. FARM OR LEASE NAME

Kade Federal

9. WELL NO.

1

10. FIELD AND POOL, OR WILDCAT

Wildcat-Delaware

11. SEC., T., R., M., OR BLK.
AND SURVEY OR AREA

Sec. 34, T25S, R26E

12. COUNTY OR PARISH

Eddy

N.M.

17. NO. OF ACRES ASSIGNED
TO THIS WELL

40

20. ROTARY OR CABLE TOOLS

Cable tools

22. APPROX. DATE WORK WILL START*

June 3, 1983

1a. TYPE OF WORK

DRILL ☒

DEEPEN ☐

PLUG BACK ☐

b. TYPE OF WELL

OIL
WELL ☒

GAS
WELL ☐

OTHER

SINGLE
ZONE ☒

MULTIPLE
ZONE ☐

2. NAME OF OPERATOR

Sundown Petroleum Ltd. ✓

3. ADDRESS OF OPERATOR

204 Ghils Tower West, Midland, Texas 79701

4. LOCATION OF WELL (Report location clearly and in accordance with any State requirements.)*

At surface 660' FNL & 1980' FEL (NW/4 NE/4)

At proposed prod. zone Same

14. DISTANCE IN MILES AND DIRECTION FROM NEAREST TOWN OR POST OFFICE*

21 miles south of Carlsbad, New Mexico

15. DISTANCE FROM PROPOSED*

LOCATION TO NEAREST
PROPERTY OR LEASE LINE, FT.
(Also to nearest drlg. unit line, if any) 660' North

16. NO. OF ACRES IN LEASE

18. DISTANCE FROM PROPOSED LOCATION*
TO NEAREST WELL, DRILLING, COMPLETED,
OR APPLIED FOR, ON THIS LEASE, FT.

1320' W

19. PROPOSED DEPTH

2100'

21. ELEVATIONS (Show whether DF, RT, GR, etc.)

3354.5' GR

23.

PROPOSED CASING AND CEMENTING PROGRAM

SIZE OF HOLE	SIZE OF CASING	WEIGHT PER FOOT	SETTING DEPTH	QUANTITY OF CEMENT
12 1/4"	8 5/8"	24.0#	300' ±	150 sx (Circulate)
8"	5 1/2"	15.5#	2100' ±	300 sx

Proposed plans are to drill through the Delaware formation and test for possible commercial oil production.

RECEIVED

MAY 31 1983

OIL & GAS

Posted 6/1/83
J.D. - 10/1/83
6-24-83

IN ABOVE SPACE DESCRIBE PROPOSED PROGRAM: If proposal is to deepen or plug back, give data on present productive zone. If proposal is to drill or deepen directionally, give pertinent data on subsurface locations and measured and true vertical depths. Give blowout preventer program, if any.

24.

SIGNED

Larry W. Franklin

TITLE

Agent

DATE 5/28/83

(This space for Federal or State office use)

PERMIT NO.

APPROVAL DATE

APPROVED BY

B. A. Lopez

TITLE

DATE

6/15/83

CONDITIONS OF APPROVAL, IF ANY:

N. MEXICO OIL CONSERVATION COMMISS
WELL LOCATION AND ACREAGE DEDICATION PLAT

Form C-102
 Supersedes C-128
 Effective 1-1-65

All distances must be from the outer boundaries of the Section

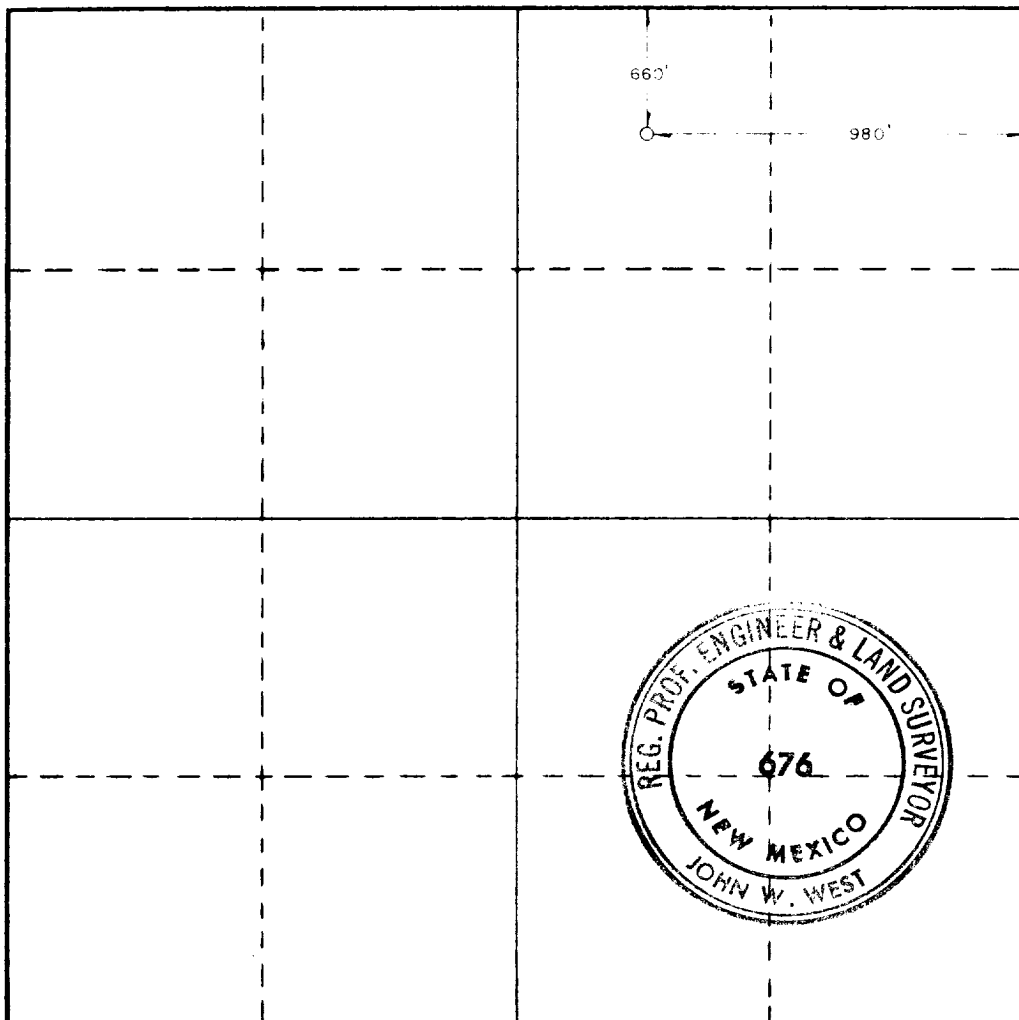
Operator Sundown Petroleum LTD.			Lease Kade Federal		Well No. 1
Unit Letter B	Section 34	Township 25 South	Range 26 East	County Eddy	
Actual Footage Location of Well: 660 feet from the north line and 1980 feet from the east line					
Ground Level Elev. 3354.5'	Producing Formation Delaware		Pool Wildcat	Dedicated Acreage: 40 Acres	

1. Outline the acreage dedicated to the subject well by colored pencil or hachure marks on the plat below.
2. If more than one lease is dedicated to the well, outline each and identify the ownership thereof (both as to working interest and royalty).
3. If more than one lease of different ownership is dedicated to the well, have the interests of all owners been consolidated by communitization, unitization, force-pooling, etc?

☐ Yes ☐ No If answer is "yes," type of consolidation _____

If answer is "no," list the owners and tract descriptions which have actually been consolidated. (Use reverse side of this form if necessary.) _____

No allowable will be assigned to the well until all interests have been consolidated (by communitization, unitization, forced-pooling, or otherwise) or until a non-standard unit, eliminating such interests, has been approved by the Commission.



CERTIFICATION

I hereby certify that the information contained herein is true and complete to the best of my knowledge and belief.

Name *John W. Franklin*
 Position _____

Agent
 Company
Sundown Petroleum Ltd.

Date
5/28/83

I hereby certify that the well location shown on this plat was plotted from field notes of actual surveys made by me or under my supervision, and that the same is true and correct to the best of my knowledge and belief.

Date Surveyed
May 26, 1983

Registered Professional Engineer and/or Land Surveyor
John W. West

Certificate No.
John W. West, NM L.S. 676



APPLICATION TO DRILL

Sundown Petroleum Ltd.
Kade Federal No. 1
660' FNL & 1980' FEL
Sec. 34, T25S, R26E
Eddy County, N.M.

NM - 19423

The following items supplement Form 9-331C in accordance with instructions contained in NTL-6:

1. Geologic Name of Surface Formation: Aeolian
2. Drilling Tools and Associated Equipment: Cable tool rig.
3. Proposed Drilling Depth: 2100'
4. Estimated Geological Marker Tops:

Delaware Lime	2000'
Delaware Sand	2050'
5. Mineral Bearing Formation: Oil bearing at 2060'
6. Casing Program:

8 5/8" Casing	- Set approximately 300' of 8 5/8". 24#, ST&C casing. Cement to surface using 150 sx of Class 'C' cement.
5 1/2" Casing	- Set 5 1/2", 15.5#, ST&C casing to total depth. Cement with 300 sx of Class 'C' cement to isolate all water, oil, and gas zones.
7. Pressure Control Equipment: No pressure control needed.
8. Proposed Mud Program: No mud program needed due to the use of cable tool drilling. Will use minimum amount of water throughout the hole.

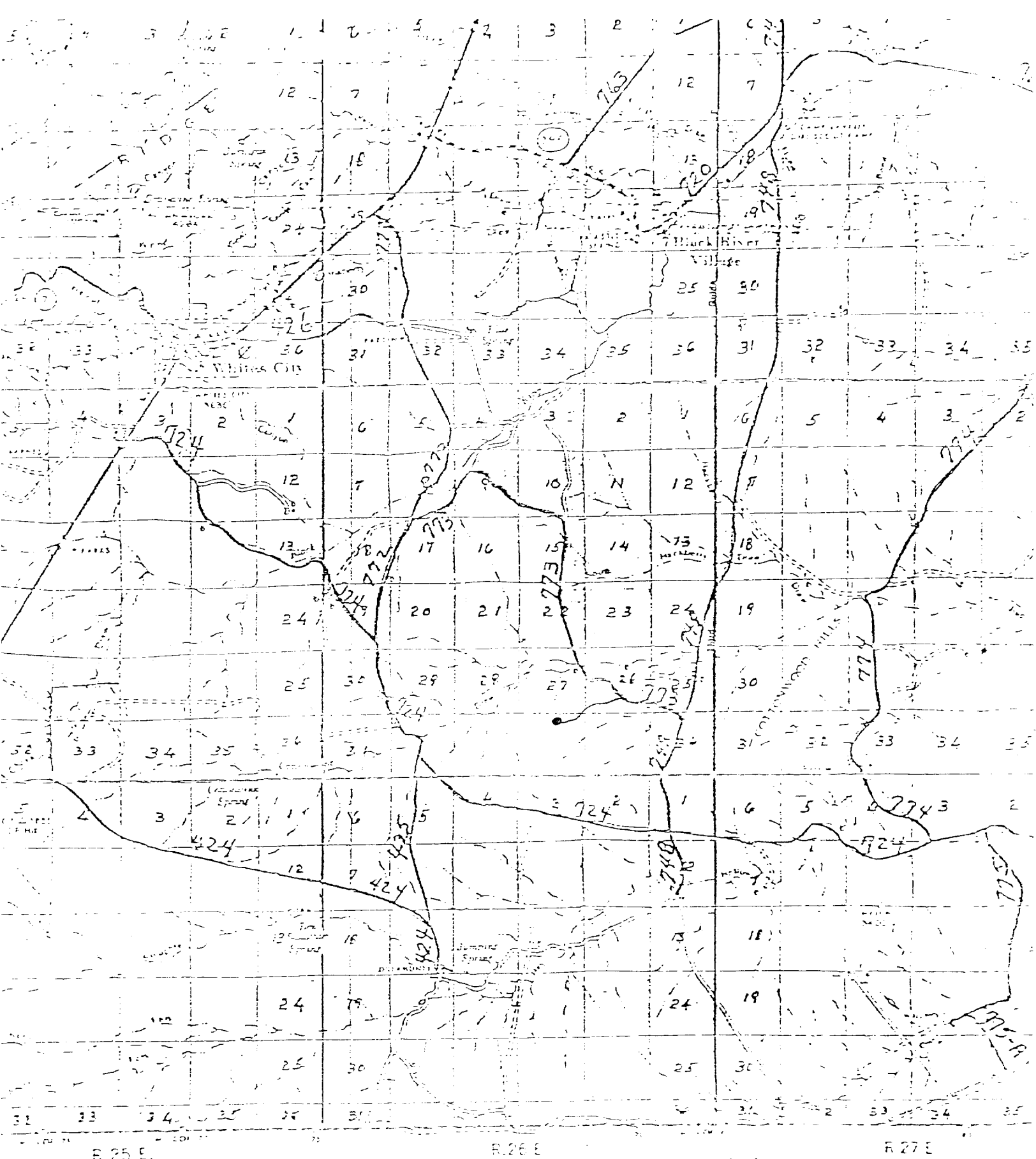


Exhibit 'A'
 Sundown Petroleum Ltd.
 Kade Federal No. 1
 660' FNL & 1980' FEL
 Sec. 34, T25S, R26E
 Eddy County, New Mexico

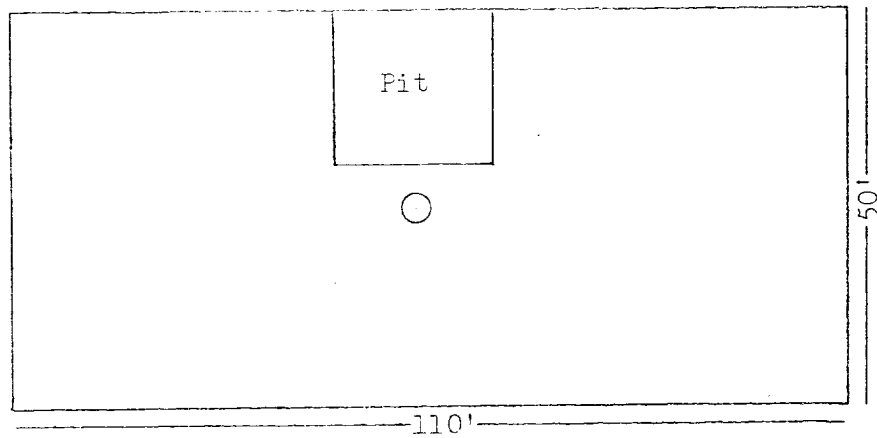
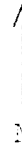


Exhibit 'C'
Sundown Petroleum Ltd.
Kade Federal No. 1
660' FNL & 1980' FEL
Sec. 34, T25S, R26E
Eddy County, New Mexico