

UNITED STATES
DEPARTMENT OF THE INTERIOR
GEOLOGICAL SURVEY

RECEIVED

APPLICATE*
(Other instructions on
reverse side)Form approved.
Budget Bureau No. 42-R1425.

30-013-24602

SEP 14 1983

APPLICATION FOR PERMIT TO DRILL, DEEPEN, OR PLUG BACK

1a. TYPE OF WORK

DRILL ☒DEEPEN ☐PLUG BACK ☐

b. TYPE OF WELL

OIL
WELL ☒GAS
WELL ☐

OTHER

SINGLE
ZONE ☒MULTIPLE
ZONE ☐

2. NAME OF OPERATOR

NEW TEX OIL COMPANY ✓

3. ADDRESS OF OPERATOR

P. O. BOX 297, HOBBS, NEW MEXICO 88241-0297

4. LOCATION OF WELL (Report location clearly and in accordance with any State requirements.)*

At surface

330' FSL AND 990' FEL OF SECTION 34

At proposed prod. zone

14. DISTANCE IN MILES AND DIRECTION FROM NEAREST TOWN OR POST OFFICE*

16 MILES SOUTH-SOUTHEAST OF MALAGA, NEW MEXICO

15. DISTANCE FROM PROPOSED*

LOCATION TO NEAREST

PROPERTY OR LEASE LINE, FT.

(Also to nearest drlg. unit line, if any)

330'

16. NO. OF ACRES IN LEASE

21.77

17. NO. OF ACRES ASSIGNED
TO THIS WELL

21.77

18. DISTANCE FROM PROPOSED LOCATION*

TO NEAREST WELL, DRILLING, COMPLETED,
OR APPLIED FOR, ON THIS LEASE, FT.

-

19. PROPOSED DEPTH

6300'

20. ROTARY OR CABLE TOOLS

ROTARY

21. ELEVATIONS (Show whether DF, RT, GR, etc.)

2882.3 GR

22. APPROX. DATE WORK WILL START*

UPON APPROVAL

23.

PROPOSED CASING AND CEMENTING PROGRAM

SIZE OF HOLE	SIZE OF CASING	WEIGHT PER FOOT	SETTING DEPTH	QUANTITY OF CEMENT
17-1/2"	13-3/8"	48#	350'	SUFFICIENT TO CIRCULATE
12-1/4"	8-5/8"	24#&28#	2900'	200 SACKS
7-7/8"	5-1/2"	14#&15.5#	6300'	SUFFICIENT TO TIE BACK TO 8-5/8"

PRODUCING ZONE WILL BE PERFORATED AND STIMULATED AS NECESSARY,

SEE ATTACHED FOR: SUPPLEMENTAL DRILLING DATA
BOP SKETCH
SURFACE USE AND OPERATIONS PLANRECEIVED
AUG 29 11 54 AM '83
BUREAU OF LAND MANAGEMENT
ARIZONA DISTRICTPost ID-1
9-23-83
y/mu Acc + API

IN ABOVE SPACE DESCRIBE PROPOSED PROGRAM: If proposal is to deepen or plug back, give data on present productive zone and proposed new productive zone. If proposal is to drill or deepen directionally, give pertinent data on subsurface locations and measured and true vertical depths. Give blowout preventer program, if any.

24.

SIGNED

Arthur R. Brown

TITLE

Agent

DATE

August 17, 1983

(This space for Federal or State office use)

PERMIT NO.

APPROVAL DATE

APPROVED BY

TITLE

DATE

9/12/83

CONDITIONS OF APPROVAL, IF ANY:

*See Instructions On Reverse Side

APPROVAL SUBJECT TO
GENERAL REQUIREMENTS AND
SPECIAL STIPULATIONS
ATTACHEDApproved
8/177

NEW MEXICO OIL CONSERVATION COMMISSION
WELL LOCATION AND ACREAGE DEDICATION PLAT

Form 1-1
Supersedes 1-1-28
Effective 1-1-28

All distances must be from the outer boundaries of the Section

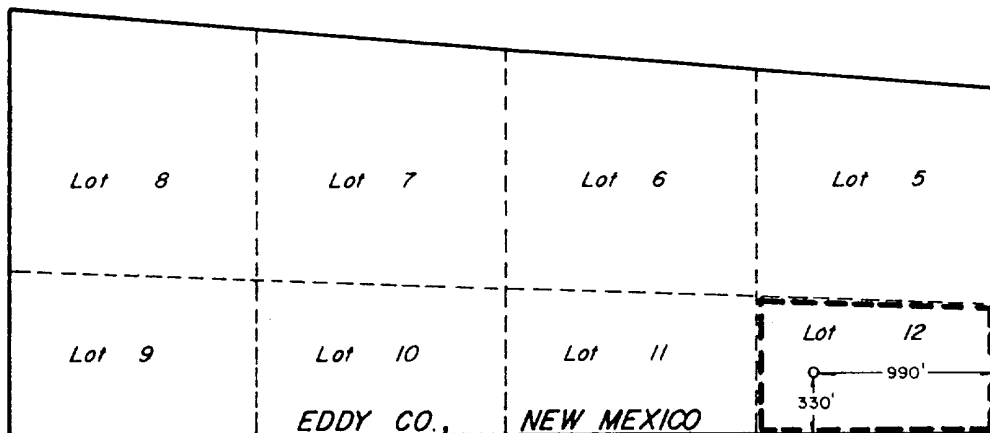
Operator NEW TEX OIL CO.		Lease YATES FEDERAL		Well No. 1
Unit Letter H	Section 34	Township 26 SOUTH	Range 29 EAST	County EDDY
Actual Footage Location of Well: 330 feet from the SOUTH line and 990 feet from the EAST line				
Ground Level Elev. 2882.3	Producing Formation DELAWARE	Pool BRUSHY DRAW CHERRY CANYON	Dedicated Acreage: 21.77 Acres	

1. Outline the acreage dedicated to the subject well by colored pencil or hatchure marks on the plat below.
2. If more than one lease is dedicated to the well, outline each and identify the ownership thereof (both as to working interest and royalty).
3. If more than one lease of different ownership is dedicated to the well, have the interests of all owners been consolidated by communitization, unitization, force-pooling, etc?

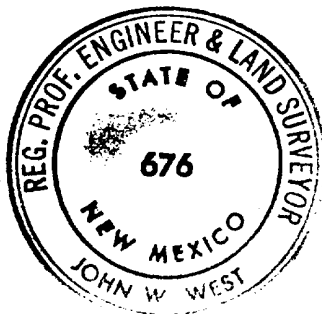
☐ Yes ☐ No If answer is "yes," type of consolidation _____

If answer is "no," list the owners and tract descriptions which have actually been consolidated. (Use reverse side of this form if necessary.) _____

No allowable will be assigned to the well until all interests have been consolidated (by communitization, unitization, forced-pooling, or otherwise) or until a non-standard unit, eliminating such interests, has been approved by the Commission.



EDDY CO., NEW MEXICO
LOVING CO., TEXAS



CERTIFICATION

I hereby certify that the information contained herein is true and complete to the best of my knowledge and belief.

Name Arthur R. Brown
Position Agent

Company
NEW TEX OIL COMPANY

Date
AUGUST 16, 1983

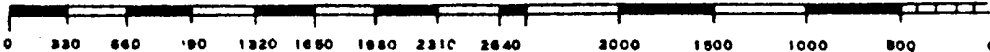
I hereby certify that the well location shown on this plat was plotted from field notes of actual surveys made by me or under my supervision, and that the same is true and correct to the best of my knowledge and belief.

Date Surveyed
AUGUST 2, 1983

Registered Professional Engineer and/or Land Surveyor

John W. West

Certificate No.	JOHN W. WEST	676
	PATRICK A. ROMERO	6668
	Ronald J. Eldson	3239



SUPPLEMENTAL DRILLING DATA

NEW TEX OIL COMPANY WELL NO.1 YATES FEDERAL

1. SURFACE FORMATION: Quaternary.

2. ESTIMATED TOPS OF GEOLOGIC MARKERS:

Rustler Anhydrite	280'
Base Lower Salt	2750'
Delaware Lime	2900'
Delaware Sand	2940'
Cherry Canyon	3840'
Brushy Canyon	5200'

3. ANTICIPATED POSSIBLE HYDROCARBON BEARING ZONES:

Delaware Sand	Oil
Cherry Canyon	Oil
Brushy Canyon	Oil

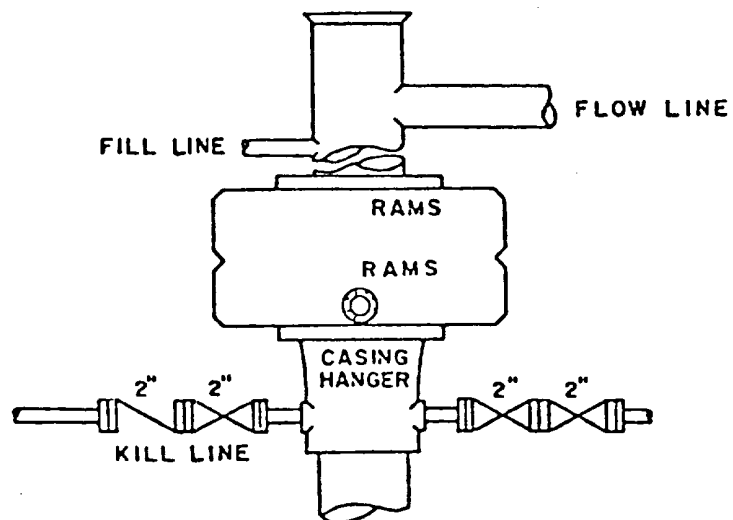
4. PROPOSED CASING AND CEMENTING PROGRAM:

<u>CASING SIZE</u>	<u>SETTING DEPTH</u>		<u>WEIGHT</u>	<u>GRADE</u>	<u>JOINT</u>
	<u>FROM</u>	<u>TO</u>			
13-3/8"	0	350'	48#	H-40	STC
8-5/8"	0	2400'	24#	K-55	STC
"	2400'	2900'	28#	K-55	STC
5-1/2"	0	5400'	14#	K-55	STC
"	5400'	6300'	15.5#	K-55	STC

13-3/8" will be cemented with approximately 300 sacks of Class "C".
Cement to circulate.

8-5/8" will be cemented with 200 sacks of Class "C".

5-1/2" will be cemented with sufficient Light cement, tailed-in
with 200 sacks of Class "C", to tie back to 8-5/8" casing.



BOP STACK

3000 PSI WORKING PRESSURE

BOP ARRANGEMENT

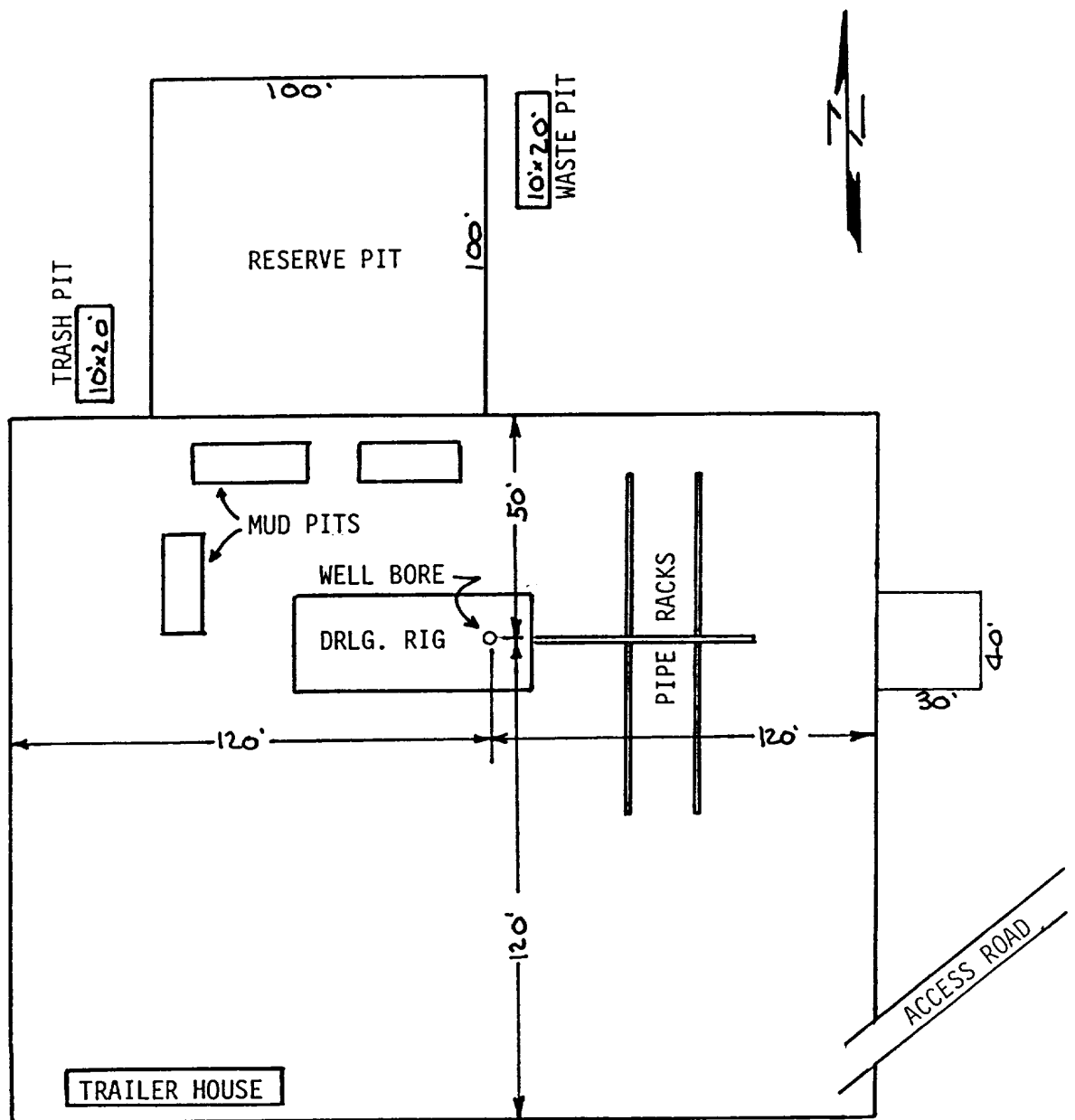


EXHIBIT "C"

NEW TEX OIL COMPANY
WELL NO.1 YATES FEDERAL
DRILLING RIG LAYOUT
SCALE: None

