

Form 3160-5
(July 1989)
(Formerly 9-331)

UNITED STATES
DEPARTMENT OF THE INTERIOR
BUREAU OF LAND MANAGEMENT

CONTACT RECEIVING
OFFICE FOR NUMBER
OF COPIES REQUIRE
(Other instructions on reverse
side)

BLM Roswell District
Modified Form No.
NM060-3160-4

5. LEASE DESIGNATION AND SERIAL NO.
NM-13997

SUNDRY NOTICES AND REPORTS ON WELLS

(Do not use this form for proposals to drill or to deepen or plug back to a different reservoir.
Use "APPLICATION FOR PERMIT-" for such proposals.)

RECEIVED

DEC 10 '90

1. OIL WELL ☒ GAS WELL ☐ OTHER ☐

2. NAME OF OPERATOR

Meridian Oil Inc.

3. ADDRESS OF OPERATOR

21 Desta Dr., Midland, TX 79705

3a. AREA CODE & PHONE NO.

915-686-5600

4. LOCATION OF WELL (Report location clearly and in accordance with any State requirements.*

See also space 17 below.)

At surface

330' FNL & 1700' FWL

7. UNIT AGREEMENT NAME

8. FARM OR LEASE NAME

Brushy Federal

9. WELL NO.

1

10. FIELD AND POOL, OR WILDCAT

Brushy Draw (Delaware)

11. SEC., T., R., M., OR BLK. AND
SURVEY OR AREA

Sec. 35, T26S, R29E

14. PERMIT NO.

15. ELEVATIONS (Show whether DF, RT, GR, etc.)

2862' GR.

12. COUNTY OR PARISH

Eddy

13. STATE

NM

16. Check Appropriate Box To Indicate Nature of Notice, Report, or Other Data

NOTICE OF INTENTION TO:

TEST WATER SHUT-OFF

☐

PULL OR ALTER CASING

☐

FRACTURE TREAT

☐

MULTIPLE COMPLETE

☐

SHOOT OR ACIDIZE

☐

ABANDON*

☐

REPAIR WELL

☐

CHANGE PLANS

☒

(Other) Add More Delaware Pay

SUBSEQUENT REPORT OF:

WATER SHUT-OFF

☐

REPAIRING WELL

☐

FRACTURE TREATMENT

☐

ALTERING CASING

☐

SHOOTING OR ACIDIZING

☐

ABANDONMENT*

☐

(Other)

(NOTE: Report results of multiple completion on Well
Completion or Recompletion Report and Log form.)

17. DESCRIBE PROPOSED OR COMPLETED OPERATIONS (Clearly state all pertinent details, and give pertinent dates, including estimated date of starting any proposed work. If well is directionally drilled, give subsurface locations and measured and true vertical depths for all markers and zones pertinent to this work.)*

Recomplete to add more Delaware pay (procedure and well bore diagrams attached).

18. I hereby certify that the foregoing is true and correct

SIGNED

Robert L. Bradshaw

TITLE

Sr. Staff Env./Reg. Spec.

DATE

05 December 1990

(This space for Federal or State office use)

APPROVED BY

TITLE

DATE

CONDITIONS OF APPROVAL, IF ANY:

*See Instructions on Reverse Side

Brushy Federal No. 1
Brushy Draw Field
Eddy County, New Mexico

Project Engineer: K. L. Midkiff

Office: (915) 686-5714
Residence: (915) 686-8650

1. MIRU PU, ND WH, NU BOP. POOH with rods, pump and tubing. LD rods.
2. RIH with casing scraper to PBTD. POOH. RIH with treating packer to 4800', set packer. Mix 10 gallons of Unichem Techni-Clean 420 in 10 barrels of 2% KCl water and pump down tubing at 1 BPM. Mix 2 drums of Unichem XFE converter in 8 barrels of 2% KCl and pump down tubing at 1 BPM. Flush to bottom perf with 2% KCl water. Release packer and pull up to 3500'. Load hole with treated 2% KCl water (same as breakdown fluid) and POOH.
3. Set CIBP at 3400'. Test casing and plug to 3500 psi.
4. RIH with 2 1/2" casing gun and perforate 2 SPF at 2956'-2978' (44 shots), 2982'-2990' (16 shots), and 2993'-3012' (38 shots). POOH with wireline.
5. MIRU stimulation company. NU surface lines and test to 3000 psi. Breakdown Bell Canyon with 3000 gallons of treated 2% KCl water and 147 7/8" RCNBS (Sp. Gr. = 1.3). Pump down casing. Run gauge ring and junk basket to knock balls off.

Treating Rate =	8 BPM
Anticipated Pressure =	1400 psi
Maximum Pressure =	2800 psi

6. Fracture stimulate Bell Canyon down casing with 20000 gallons of 65-Quality N₂ foam and 64100 lbs of 12/20 mesh Ottawa Sand. Pump at 20 BPM.

Treating Rate =	20 BPM
Anticipated Pressure =	1500 psi
Maximum Pressure =	2800 psi

<u>Stage</u>	<u>Fluid</u>	<u>ppg</u>	<u>Volume (gal)</u>
Pad	65-Q Foam	0	7000
1	65-Q Foam	1-3 (Ramp)	3000
2	65-Q Foam	3-8 (Ramp)	8000
3	65-Q Foam	8	2000
Flush	65-Q Foam	0	1750

Shut well in for 90 minutes, then start to flow well back.

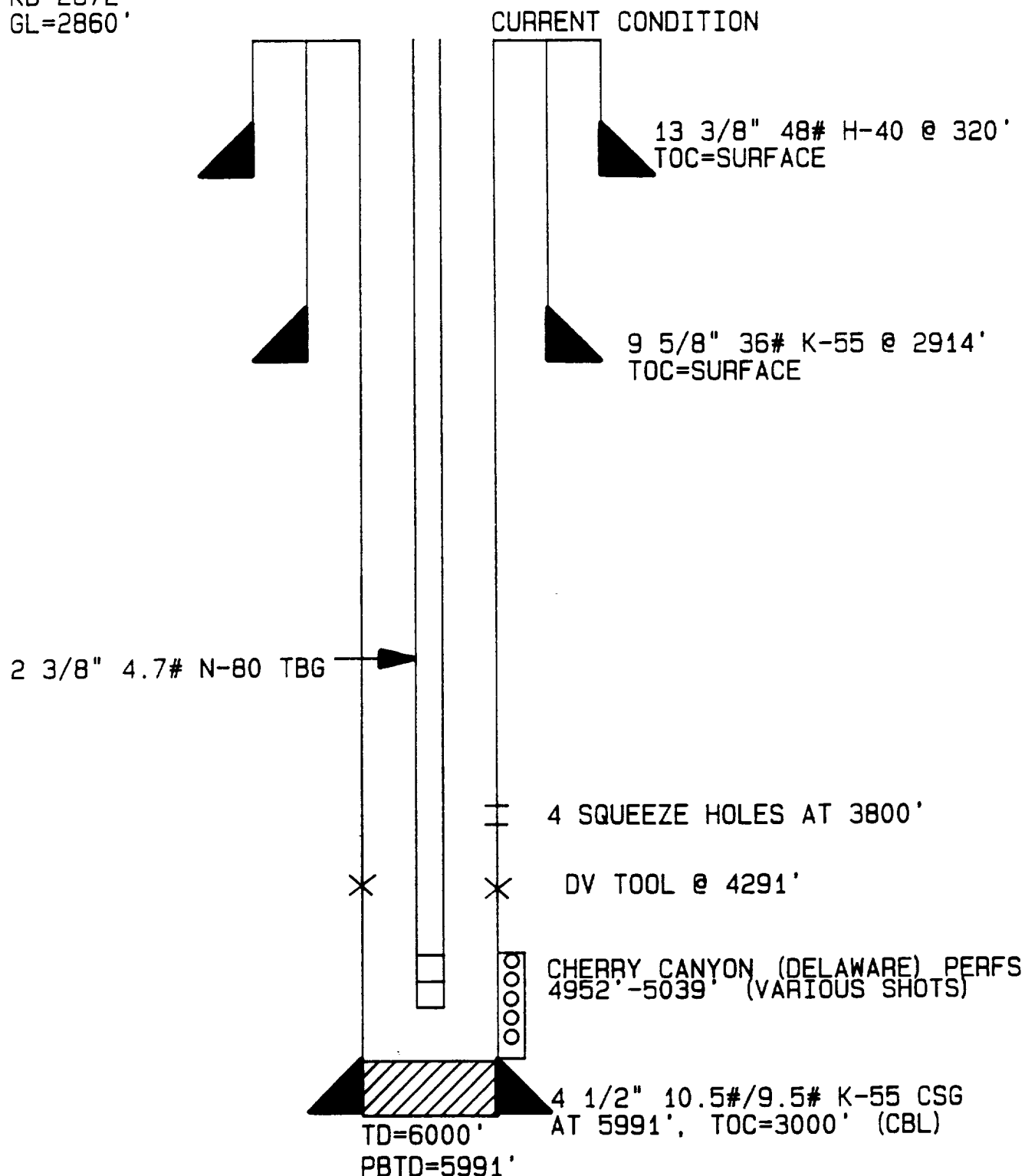
7. RIH with bit and knock out CIBP. Clean out ot PBTD. RIH with MA, PN, SN and tubing to 2900'. Run pump, 2075' of 7/8" steel rods and 825' of 1" fiberglass rods (both from Pecos Fed. #1-Y) ND BOP, NU WH. Space out and put on pump. Production personel will lower tubing in 10 days. Report rates to Midland office. Also run Stanly Filter with pump (contact Jerry Sparks for filter).

Approved: _____ Date: _____
T J. Harrington

MERIDIAN OIL
BRUSHY FEDERAL NO. 1
BRUSHY DRAW (DELAWARE) FIELD
EDDY COUNTY, NEW MEXICO

KLM 10/7/90

KB=2872'
GL=2860'

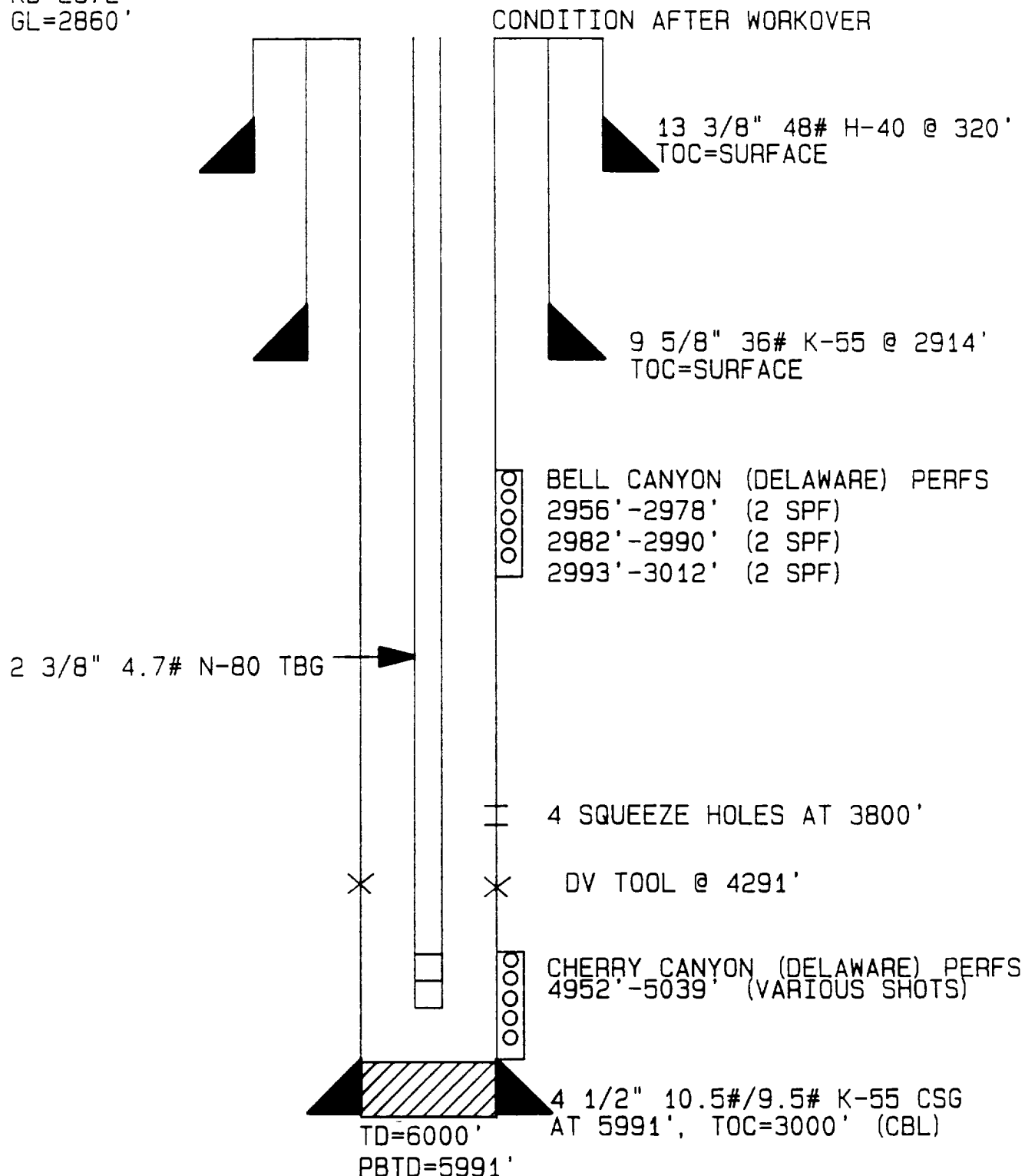


NOTE: HOLE HAS UP TO 5 1/2 DEGREES INCLINATION

MERIDIAN OIL
BRUSHY FEDERAL NO. 1
BRUSHY DRAW (DELAWARE) FIELD
EDDY COUNTY, NEW MEXICO

KLM 10/7/90

KB=2872'
GL=2860'



NOTE: HOLE HAS UP TO 5 1/2 DEGREES INCLINATION

Brushy Federal No. 1
Brushy Draw Field
Eddy County, New Mexico

MECHANICAL DATA

<u>Type Tubular:</u>	<u>OD</u> <u>(in)</u>	<u>ID</u> <u>(in)</u>	<u>Weight</u> <u>(#/ft)</u>	<u>Grade</u>	<u>Conn.</u>	<u>Depth</u> <u>(ft)</u>	<u>Collapse</u> <u>(psi)</u>	<u>Burst</u> <u>(psi)</u>	<u>Capacity</u> <u>(BPF)</u>	<u>TOC</u> <u>(ft)</u>
Surface Casing	13 3/8	12.715	48	H-40	---	320	770	1730	0.1570	Surf
Intermediate Casing	9 5/8	8.921	36	K-55	---	2914	2020	3520	0.0773	Surf
Production Casing	4 1/2	4.052	10.5	K-55	---	0-4673 4673-5991	4010 3310	4790 4380	0.0159 0.0162	3000 (CBL)
		DV Tool at 4291'-4294'								
Tubing	2 3/8	1.995	4.7	N-80	8rd EUE	4900	11780	11200	0.00387	---