

RECEIVED

X

RECEIVED
DEC 6 10 54 AM '90
CANDIDATE
AREAS
DOE
ERS

12-7 90

Title 18 U.S.C. Section 1001, makes it a crime for any person knowingly and willfully to make to any department or agency of the United States any false, fictitious or fraudulent statements or representations as to any matter within its jurisdiction.

**Brushy Federal No. 1
Brushy Draw Field
Eddy County, New Mexico**

Project Engineer: K. L. Midkiff

**Office: (915) 686-5714
Residence: (915) 686-8650**

1. MIRU PU, ND WH, NU BOP. POOH with rods, pump and tubing. LD rods.
2. RIH with casing scraper to PBTD. POOH. RIH with treating packer to 4800', set packer. Mix 10 gallons of Unichem Techni-Clean 420 in 10 barrels of 2% KCl water and pump down tubing at 1 BPM. Mix 2 drums of Unichem XFE converter in 8 barrels of 2% KCl and pump down tubing at 1 BPM. Flush to bottom perf with 2% KCl water. Release packer and pull up to 3500'. Load hole with treated 2% KCl water (same as breakdown fluid) and POOH.
3. Set CIBP at 3400'. Test casing and plug to 3500 psi.
4. RIH with 2 1/2" casing gun and perforate 2 SPF at 2956'-2978' (44 shots), 2982'-2990' (16 shots), and 2993'-3012' (38 shots). POOH with wireline.
5. MIRU stimulation company. NU surface lines and test to 3000 psi. Breakdown Bell Canyon with 3000 gallons of treated 2% KCl water and 147 7/8" RCNBS (Sp. Gr. = 1.3). Pump down casing. Run gauge ring and junk basket to knock balls off.

Treating Rate =	8 BPM
Anticipated Pressure =	1400 psi
Maximum Pressure =	2800 psi

6. Fracture stimulate Bell Canyon down casing with 20000 gallons of 65-Quality N₂ foam and 64100 lbs of 12/20 mesh Ottawa Sand. Pump at 20 BPM.

Treating Rate =	20 BPM
Anticipated Pressure =	1500 psi
Maximum Pressure =	2800 psi

<u>Stage</u>	<u>Fluid</u>	<u>ppg</u>	<u>Volume (gal)</u>
Pad	65-Q Foam	0	7000
1	65-Q Foam	1-3 (Ramp)	3000
2	65-Q Foam	3-8 (Ramp)	8000
3	65-Q Foam	8	2000
Flush	65-Q Foam	0	1750

Shut well in for 90 minutes, then start to flow well back.

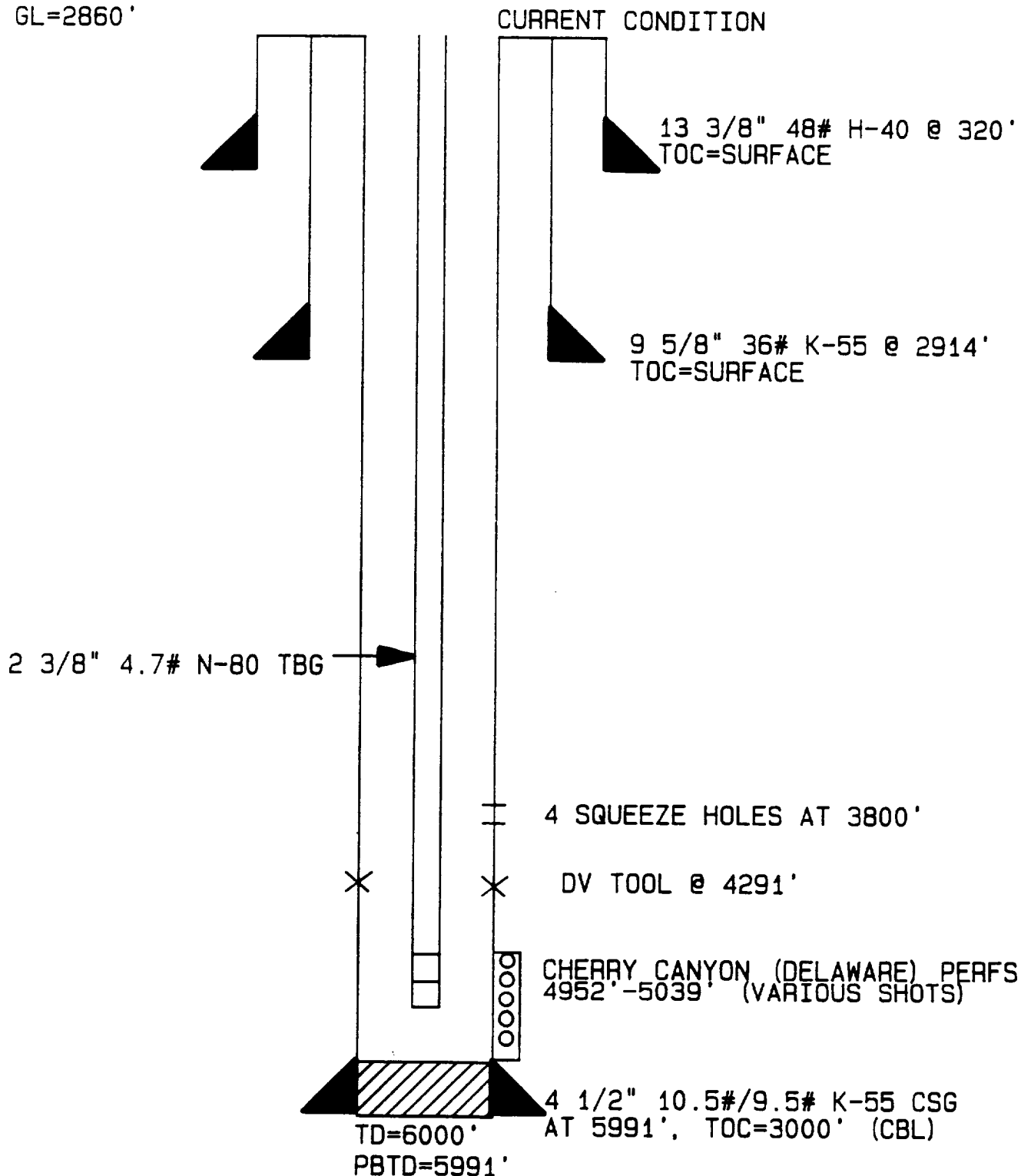
7. RIH with bit and knock out CIBP. Clean out at PBTD. RIH with MA, PN, SN and tubing to 2900'. Run pump, 2075' of 7/8" steel rods and 825' of 1" fiberglass rods (both from Pecos Fed. #1-Y) ND BOP, NU WH. Space out and put on pump. Production personnel will lower tubing in 10 days. Report rates to Midland office. Also run Stanly Filter with pump (contact Jerry Sparks for filter).

Approved: _____ Date: _____
T J. Harrington

MERIDIAN OIL
 BRUSHY FEDERAL NO. 1
 BRUSHY DRAW (DELAWARE) FIELD
 EDDY COUNTY, NEW MEXICO

KLM 10/7/90

KB=2872'
 GL=2860'

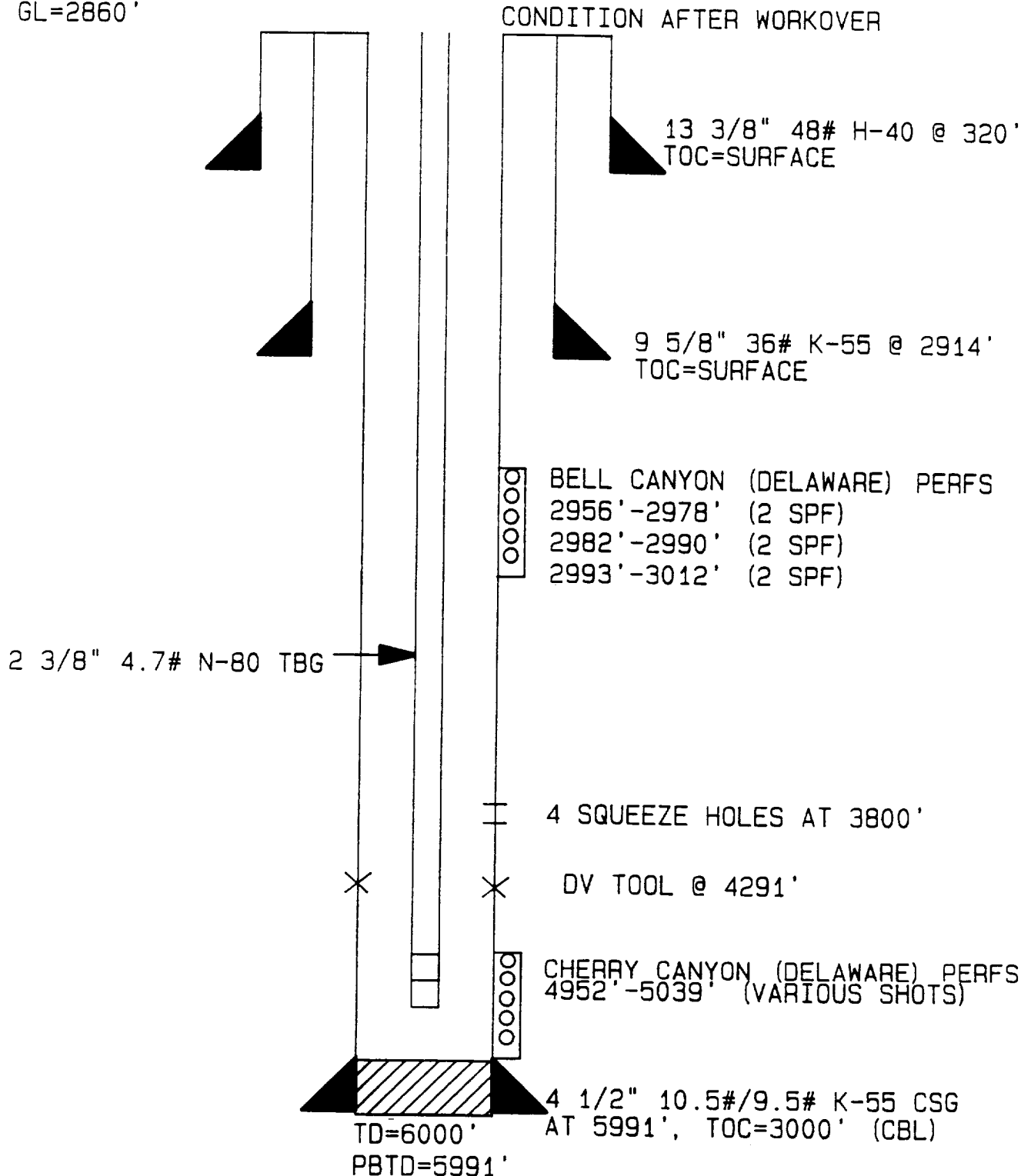


NOTE: HOLE HAS UP TO 5 1/2 DEGREES INCLINATION

MERIDIAN OIL
BRUSHY FEDERAL NO. 1
BRUSHY DRAW (DELAWARE) FIELD
EDDY COUNTY, NEW MEXICO

KLM 10/7/90

KB=2872'
GL=2860'



NOTE: HOLE HAS UP TO 5 1/2 DEGREES INCLINATION

Brushy Federal No. 1
Brushy Draw Field
Eddy County, New Mexico

MECHANICAL DATA

<u>Type Tubular:</u>	<u>OD</u> <u>(in)</u>	<u>ID</u> <u>(in)</u>	<u>Weight</u> <u>(#/ft)</u>	<u>Grade</u>	<u>Conn.</u>	<u>Depth</u> <u>(ft)</u>	<u>Collapse</u> <u>(psi)</u>	<u>Burst</u> <u>(psi)</u>	<u>Capacity</u> <u>(BPF)</u>	<u>TOC</u> <u>(ft)</u>
Surface Casing	13 3/8	12.715	48	H-40	—	320	770	1730	0.1570	Surf
Intermediate Casing	9 5/8	8.921	36	K-55	—	2914	2020	3520	0.0773	Surf
Production Casing	4 1/2	4.052	10.5	K-55	—	0-4673 4673-5991	4010 3310	4790 4380	0.0159 0.0162	3000 (CBL)
		DV Tool at 4291'-4294'								
Tubing	2 3/8	1.995	4.7	N-80	8rd EUE	4900	11780	11200	0.00387	—