

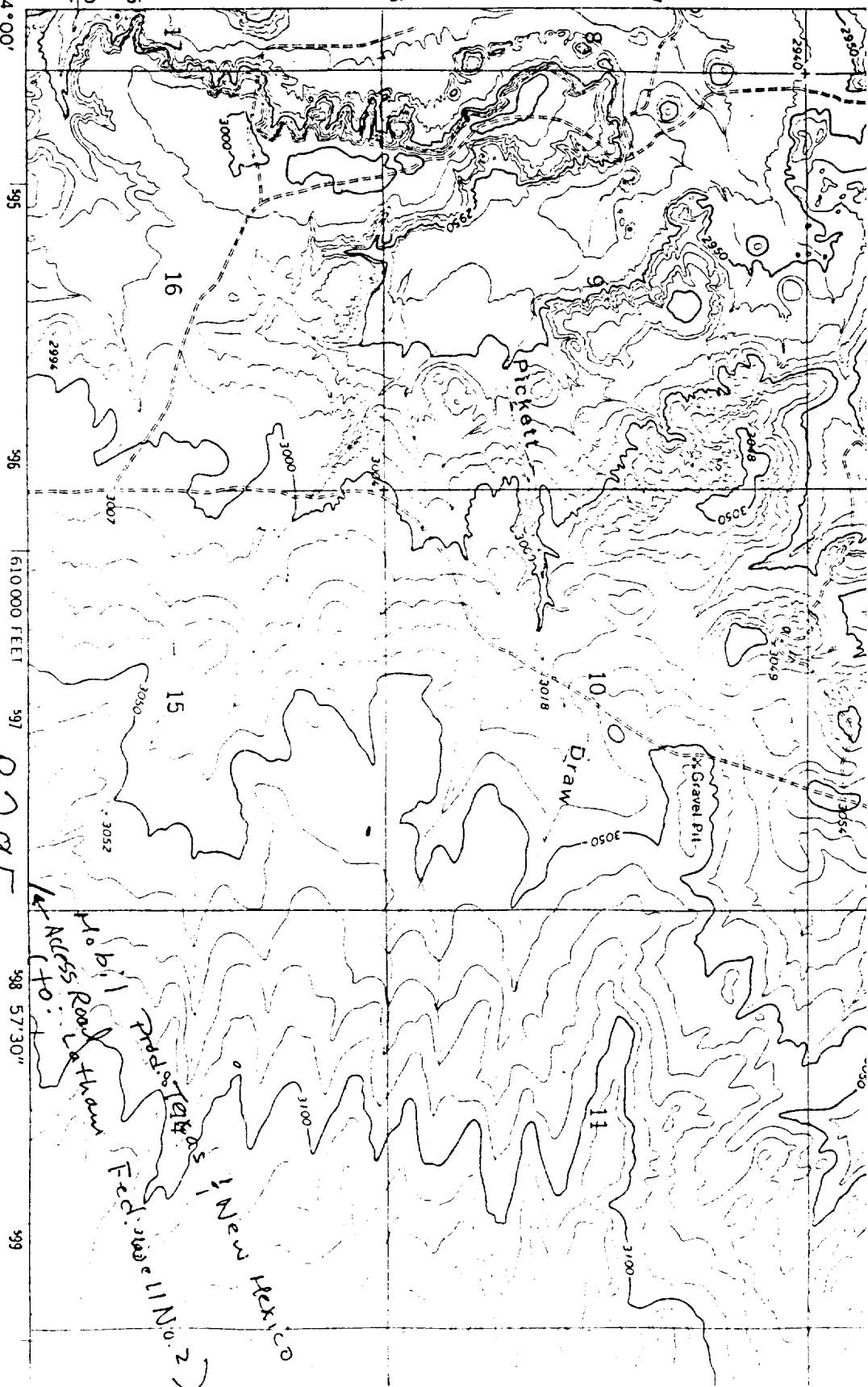
T-25-S

Sheet 11
MALAGA
1:62,500

32° 07' 30"
104° 00'

410 000
FEET

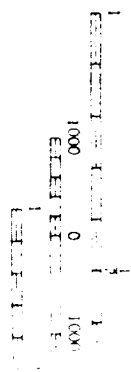
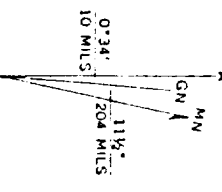
Mapped, edited, and published by the Geological Survey
Control by USGS and USCG&GS
Topography by photogrammetric methods from aerial
photographs taken 1967. Field checked 1968
Polyconic projection. 1927 North American datum
10,000-foot grid based on New Mexico coordinate system,
east zone
1000-meter Universal Transverse Mercator grid ticks,
zone 13, shown in blue
Fine red dashed lines indicate selected fence lines



R-29-E

Mobile Telephone
Federal No. 2
New Mexico

UTM GRID AND 1968 MAGNETIC NORTH
DECLINATION AT CENTER OF SHEET



USGS Prairie Canyon Quadrangle,
7.5 Minute Series, 1968.

THIS MAP COMPILED
FOR SALE BY U.S. GEOLOGICAL SURVEY
A FOLDER DESCRIBING TOPICS

Field