

NM OIL COY COMMISSION
Drawer DD
Artesia, NM 88210
UNITED STATES
DEPARTMENT OF THE INTERIOR
BUREAU OF LAND MANAGEMENT

RECEIVED BY
SUBMIT IN T. J. CATE*
(Other instructions on
ref. side)
MAR 13 1984

30-015-24799
Form approved.
Budget Bureau No. 1004-0136
Expires August 31, 1985

APPLICATION FOR PERMIT TO DRILL, DEEPEN, OR PLUG BACK

1a. TYPE OF WORK

DRILL ☒

DEEPEN ☐

PLUG BACK ☐

b. TYPE OF WELL

OIL
WELL ☒

GAS
WELL ☐

OTHER

SINGLE
ZONE ☒

MULTIPLE
ZONE ☐

2. NAME OF OPERATOR

WORTH PETROLEUM COMPANY ✓ 817-321-1069

3. ADDRESS OF OPERATOR

P. O. BOX 17406, FORT WORTH, TEXAS 76102

4. LOCATION OF WELL (Report location clearly and in accordance with any State requirements.)*

At surface

330' FSL AND 330' FWL OF SECTION 23

At proposed prod. zone

14. DISTANCE IN MILES AND DIRECTION FROM NEAREST TOWN OR POST OFFICE*

16 AIR MILES SOUTH-SOUTHEAST OF MALAGA, NEW MEXICO

15. DISTANCE FROM PROPOSED*

LOCATION TO NEAREST
PROPERTY OR LEASE LINE, FT.
(Also to nearest drlg. unit line, if any)

330'

16. NO. OF ACRES IN LEASE

1240

17. NO. OF ACRES ASSIGNED
TO THIS WELL

40

18. DISTANCE FROM PROPOSED LOCATION*

TO NEAREST WELL, DRILLING, COMPLETED,
OR APPLIED FOR, ON THIS LEASE, FT.

-

19. PROPOSED DEPTH

5200'

20. ROTARY OR CABLE TOOLS

ROTARY

21. ELEVATIONS (Show whether DF, RT, GR, etc.)

2893.5 GL

22. APPROX. DATE WORK WILL START*

UPON APPROVAL

23.

PROPOSED CASING AND CEMENTING PROGRAM

SIZE OF HOLE	SIZE OF CASING	WEIGHT PER FOOT	SETTING DEPTH	QUANTITY OF CEMENT
12-1/4"	8-5/8"	24#	450'	SUFFICIENT TO CIRCULATE
7-7/8"	4-1/2"	14#	5200'	SUFFICIENT TO FILL TO BASE SALT

PRODUCING ZONE WILL BE PERFORATED AND STIMULATED AS NECESSARY.

SEE ATTACHED FOR: SUPPLEMENTAL DRILLING DATA
BOP SKETCH
SURFACE USE AND OPERATIONS PLAN
SURFACE RESTORATION REQUIREMENTS

Post a P
JD-1-27Bk
3-16-84



IN ABOVE SPACE DESCRIBE PROPOSED PROGRAM: If proposal is to deepen or plug back, give data on present productive zone and proposed new productive zone. If proposal is to drill or deepen directionally, give pertinent data on subsurface locations and measured and true vertical depths. Give blowout preventer program, if any.

24.

SIGNED

Arthur R. Brown

TITLE

Agent

DATE FEBRUARY 15, 1984

(This space for Federal or State office use)

PERMIT NO.

APPROVAL DATE

APPROVED BY 'Orig. Sgd.' Earl R. Cunningham

TITLE

District Manager

CONDITIONS OF APPROVAL, IF ANY:

MAR 12 1984
APPROVAL SUBJECT TO
GENERAL REQUIREMENTS AND
SPECIAL STIPULATIONS
ATTACHED

*See Instructions On Reverse Side

NEW MEXICO OIL CONSERVATION COMMISSION
WELL LOCATION AND ACREAGE DEDICATION PLAT

Form C-102
Supersedes C-12H
Effective 1-1-65

All distances must be from the outer boundaries of the Section

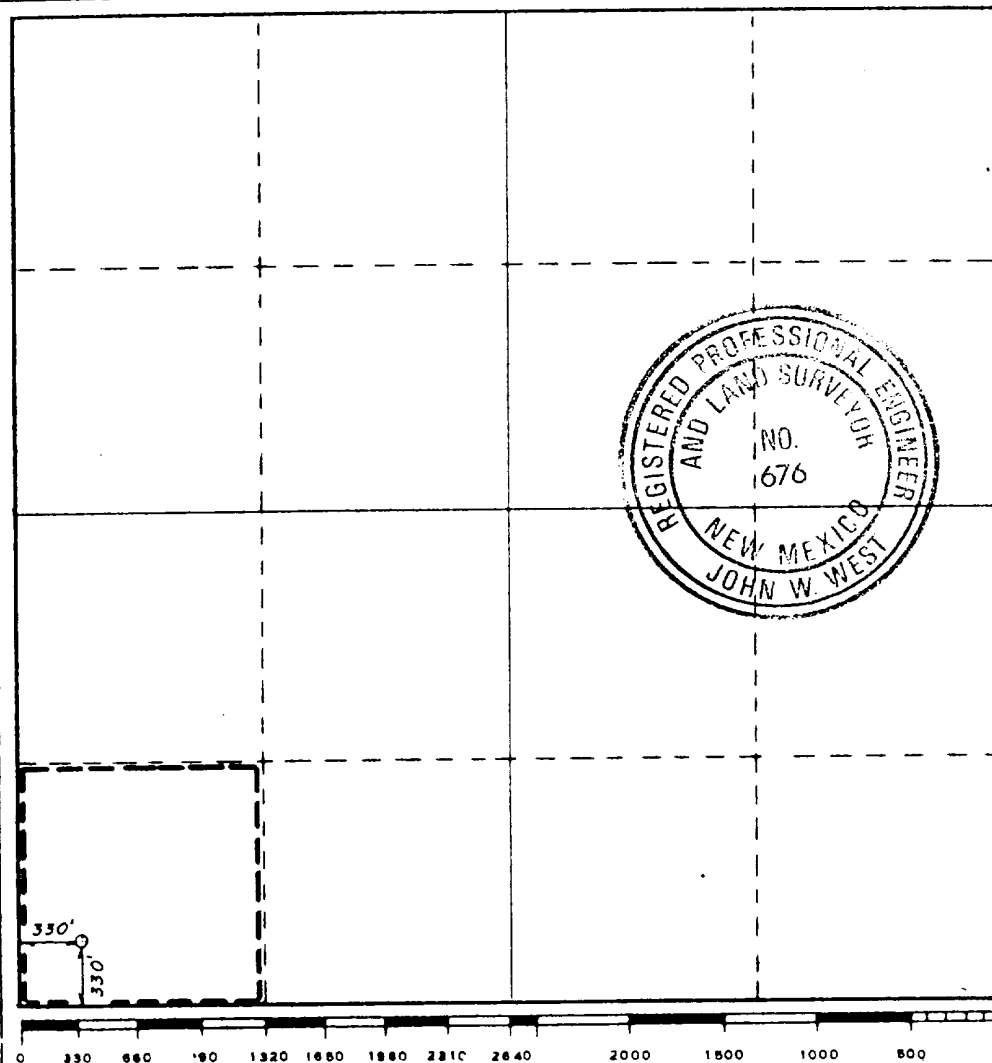
Operator WORTH PETROLEUM CO.		Lessee GULF FED.		Well No. 1
Unit Letter M	Section 23	Township 26S	Range 29E	County EDDY
Actual Footage Location of Well: 330 feet from the SOUTH line and 330 feet from the WEST line				
Ground Level Elev. 2893.5	Producing Formation DELAWARE	Pool UNDES. BRUSHY DRAW DELAWARE	Dedicated Acreage: 40 Acres	

1. Outline the acreage dedicated to the subject well by colored pencil or hachure marks on the plat below.
2. If more than one lease is dedicated to the well, outline each and identify the ownership thereof (both as to working interest and royalty).
3. If more than one lease of different ownership is dedicated to the well, have the interests of all owners been consolidated by communitization, unitization, force-pooling, etc?

☐ Yes ☐ No If answer is "yes," type of consolidation _____

If answer is "no," list the owners and tract descriptions which have actually been consolidated. (Use reverse side of this form if necessary.) _____

No allowable will be assigned to the well until all interests have been consolidated (by communitization, unitization, forced-pooling, or otherwise) or until a non-standard unit, eliminating such interests, has been approved by the Commission.



CERTIFICATION

I hereby certify that the information contained herein is true and complete to the best of my knowledge and belief.

Name Arthur R. Brown
Arthur R. Brown

Position
Agent

Company
WORTH PETROLEUM COMPANY

Date
FEBRUARY 15, 1984

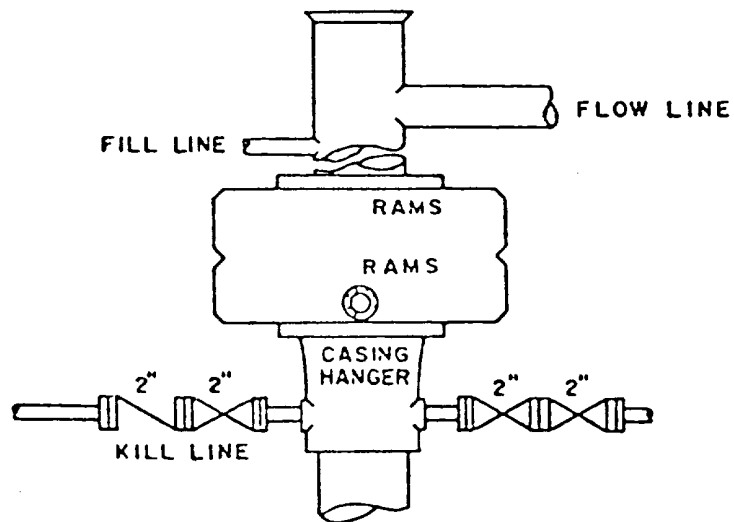
I hereby certify that the well location shown on this plat was plotted from field notes of actual surveys made by me or under my supervision, and that the same is true and correct to the best of my knowledge and belief.

Date Surveyed
1/17/84

Registered Professional Engineer and/or Land Surveyor

John W. West
Certificate No. JOHN W. WEST, 676

RONALD J. EIDSON, 3239



BOP STACK

3000 PSI WORKING PRESSURE

BOP ARRANGEMENT

SUPPLEMENTAL DRILLING DATA

WORTH PETROLEUM COMPANY

WELL NO. 1 GULF FEDERAL

1. SURFACE FORMATION: Quaternary.

2. ESTIMATED TOPS OF GEOLOGIC MARKERS:

Rustler Anhydrite	300'
Base Lower Salt	2700'
Delaware Lime	2880'
Delaware Sand	2912'
Cherry Canyon	3820'

3. ANTICIPATED POSSIBLE HYDROCARBON BEARING ZONES:

Cherry Canyon	Oil
---------------	-----

4. PROPOSED CASING AND CEMENTING PROGRAM:

CASING SIZE	SETTING DEPTH		WEIGHT	GRADE	JOINT
	FROM	TO			
8-5/8"	0	450'	24#	K-55	STC
5-1/2"	0	5200'	14#	K-55	STC

8-5/8" casing to be cemented with approximately 250 sacks of Class "C" cement. Cement to circulate.

5-1/2" casing to be cemented with sufficient Light cement, tailed in with 200 sacks of Class "C" cement, to fill back to base of salt.

Equivalent or adequate grades and weights of casing may be substituted at time casing is run, depending on availability.

5. PRESSURE CONTROL EQUIPMENT:

A 3000 psi working pressure, double ram type preventer will be in use while drilling below the surface casing.

A BOP sketch is attached.

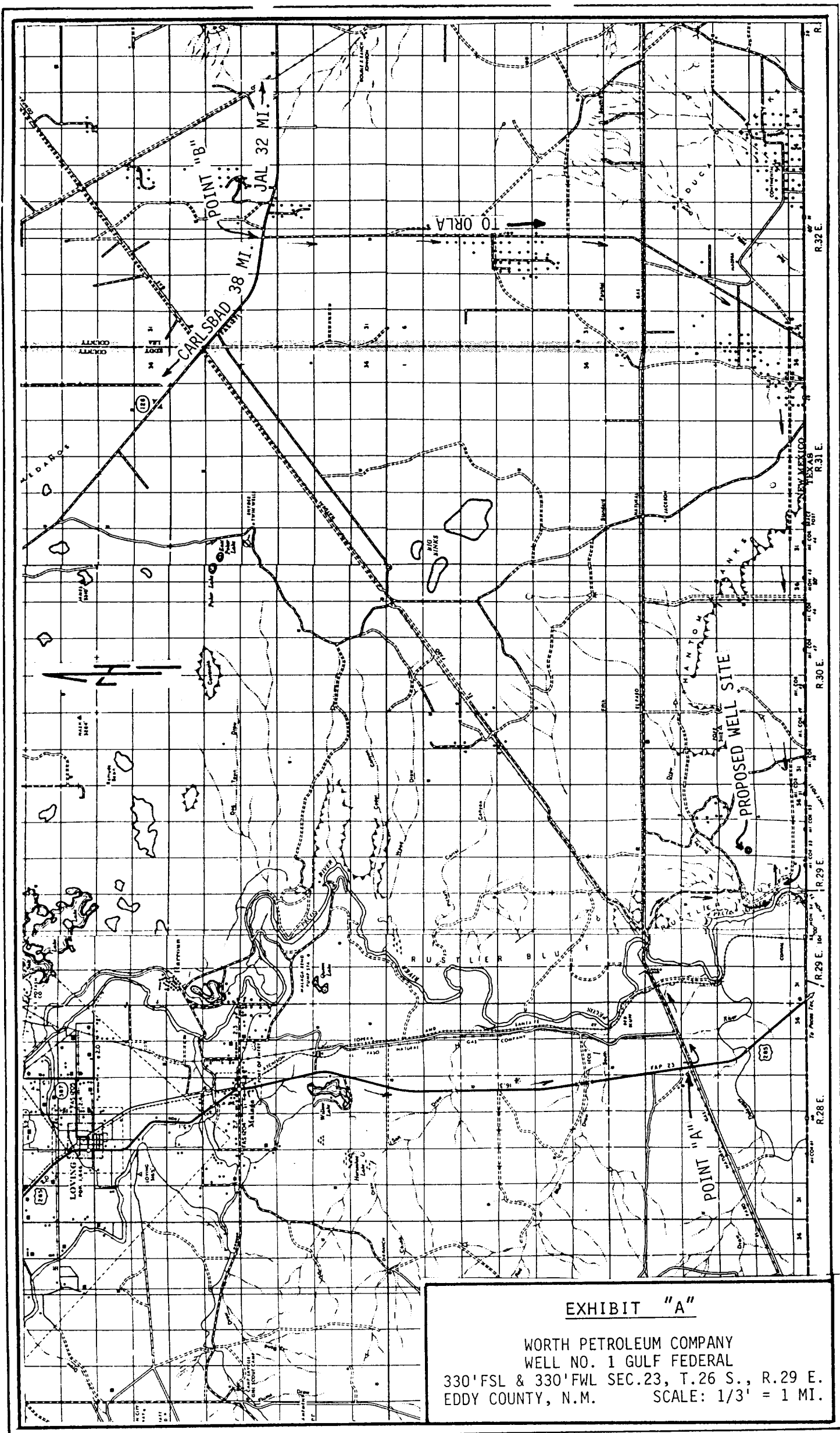


EXHIBIT "A"

WORTH PETROLEUM COMPANY
WELL NO. 1 GULF FEDERAL
330' FSL & 330' FWL SEC. 23, T. 26 S., R. 29 E.
EDDY COUNTY, N.M. SCALE: 1/3" = 1 MI.

