

30-015-24874

Form 3160-3
(November 1983)
(formerly 9-331C)

NM OIL CONS. COMMISSION

Drawer DD

Artesia, NM UNITED STATES

DEPARTMENT OF THE INTERIOR

BUREAU OF LAND MANAGEMENT

SUBRECEIVED BY

(Other instructions on reverse side)

MAY 16 1984

O. C. D.

Form approved.
Budget Bureau No. 1004-0136
Expires August 31, 1985

C/87

APPLICATION FOR PERMIT TO DRILL, DEEPEN, OR PLUG BACK

1A. TYPE OF WORK

DRILL ☒DEEPEN ☐PLUG BACK ☐

5. LEASE DESIGNATION AND SERIAL NO.

NM-21169

6. INDIAN, ALLOTTEE OR TRIBE NAME

B. TYPE OF WELL

OIL WELL ☒GAS WELL ☐OTHER ☐SINGLE ZONE ☒MULTIPLE ZONE ☐

2. NAME OF OPERATOR

LYCO ENERGY CORPORATION

(Dave Porter)

(214-661-0757)

7. UNIT AGREEMENT NAME

8. FARM OR LEASE NAME

AMOCO A FEDERAL

9. WELL NO.

1

10. FIELD AND POOL, OR WILDCAT

Wildcat - Delaware

11. SEC., T., R., M., OR BLK. AND SURVEY OR AREA

Sec. 6-26S-30E

12. COUNTY OR PARISH

Eddy

13. STATE

NM

3. ADDRESS OF OPERATOR

12700 Park Central Drive, Suite 1202, Dallas TX 75251

4. LOCATION OF WELL (Report location clearly and in accordance with any State requirements.)*

At surface

464' FSL & 1817' FWL of Section

At proposed prod. zone

same

Unit N

SE 1/4 SW 1/4

14. DISTANCE IN MILES AND DIRECTION FROM NEAREST TOWN OR POST OFFICE*

30 air miles south-southeast of Carlsbad, NM

15. DISTANCE FROM PROPOSED*

LOCATION TO NEAREST

PROPERTY OR LEASE LINE, FT.

(Also to nearest drlg. unit line, if any)

660'

16. NO. OF ACRES IN LEASE

321.24

17. NO. OF ACRES ASSIGNED TO THIS WELL

40

18. DISTANCE FROM PROPOSED LOCATION*

TO NEAREST WELL, DRILLING, COMPLETED, OR APPLIED FOR, ON THIS LEASE, FT.

NA

19. PROPOSED DEPTH

7200' Delaware

20. ROTARY OR CABLE TOOLS

Rotary

21. ELEVATIONS (Show whether DF, RT, GR, etc.)

3067' G.L.

22. APPROX. DATE WORK WILL START*

May 25, 1984

23

PROPOSED CASING AND CEMENTING PROGRAM

SIZE OF HOLE	SIZE OF CASING	WEIGHT PER FOOT	SETTING DEPTH	QUANTITY OF CEMENT
17 1/2"	13 3/8"	48#	350'	Sufficient to circulate.
11	8 5/8"	24#	3350'	Circulate back into Salt Section
7 7/8"	5 1/2"	14 & 15.5#	7100'	200 sx

Post. app.
AD-124/BK.
5-18-84

Pay zone will be selectively perforated and stimulated as needed for optimum production.

Attached are: 1. Well Location & Acreage Dedication Plat
2. Supplemental Drilling Data
3. Surface Use Plan

MAY 10 1984

EXPIRING LEASE: The 10-year primary term of NM-21169 will expire on 5-31-84 and we plan to earn a 2-year lease extension by drilling over such date.

IN ABOVE SPACE DESCRIBE PROPOSED PROGRAM: If proposal is to deepen or plug back, give data on present productive zone and proposed new productive zone. If proposal is to drill or deepen directionally, give pertinent data on subsurface locations and measured and true vertical depths. Give blowout preventer program, if any.

24.

SIGNED

James A. Knauf

TITLE Agent

DATE May 1, 1984

(This space for Federal or State office use)

PERMIT NO.

APPROVAL DATE

APPROVED BY

TITLE

CONDITIONS OF APPROVAL, IF ANY:

APPROVAL SUBJECT TO
GENERAL REQUIREMENTS AND
SPECIAL STIPULATIONS
ATTACHED

*See Instructions On Reverse Side

NEW MEXICO OIL CONSERVATION
WELL LOCATION AND ACREAGE DEDICATION AT

Form C-10,
Supersedes C-128
Effective 1-1-65

All distances must be from the outer boundaries of the Section

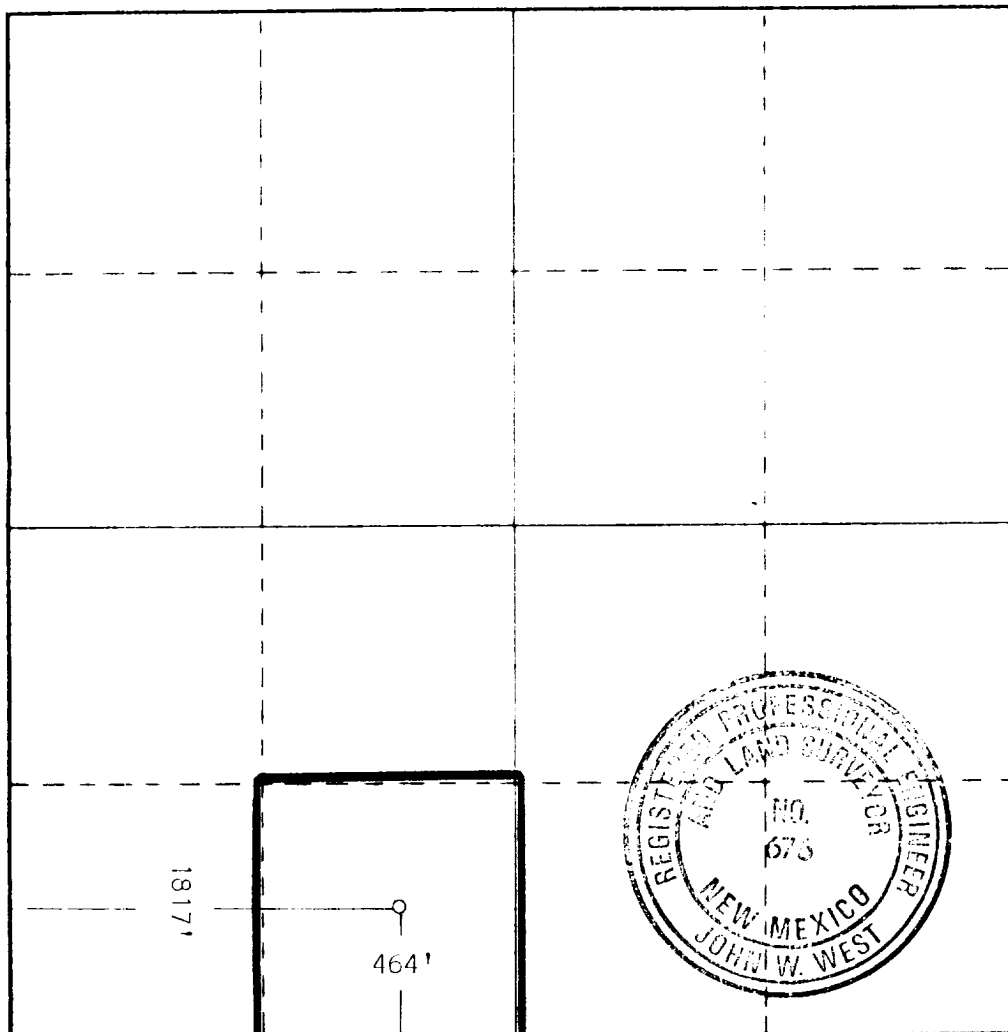
Operator LYCO ENERGY CORPORATION			Lease AMOCO A FEDERAL		Well No. 1
Grid Letter N	Section 6	Township 26S	Range 30E	County Eddy	
Actual Enclosure Location of Well: 464 feet from the South line and 1817 feet from the West line					
Ground Level Elev. 3066.8'	Producing Formation Delaware		Pool Undesignated	Dedicated Acreage 40 Acres	

1. Outline the acreage dedicated to the subject well by colored pencil or hachure marks on the plat below.
2. If more than one lease is dedicated to the well, outline each and identify the ownership thereof (both as to working interest and royalty).
3. If more than one lease of different ownership is dedicated to the well, have the interests of all owners been consolidated by communitization, unitization, force-pooling, etc?

☐ Yes ☐ No If answer is "yes," type of consolidation _____

If answer is "no," list the owners and tract descriptions which have actually been consolidated. (Use reverse side of this form if necessary.) _____

No allowable will be assigned to the well until all interests have been consolidated (by communitization, unitization, forced-pooling, or otherwise) or until a non-standard unit, eliminating such interests, has been approved by the Commission.



CERTIFICATION

I hereby certify that the information contained herein is true and complete to the best of my knowledge and belief

James A. Knauf
Name
James A. Knauf

Position
Agent

Company
LYCO ENERGY CORPORATION

Date
May 7, 1984

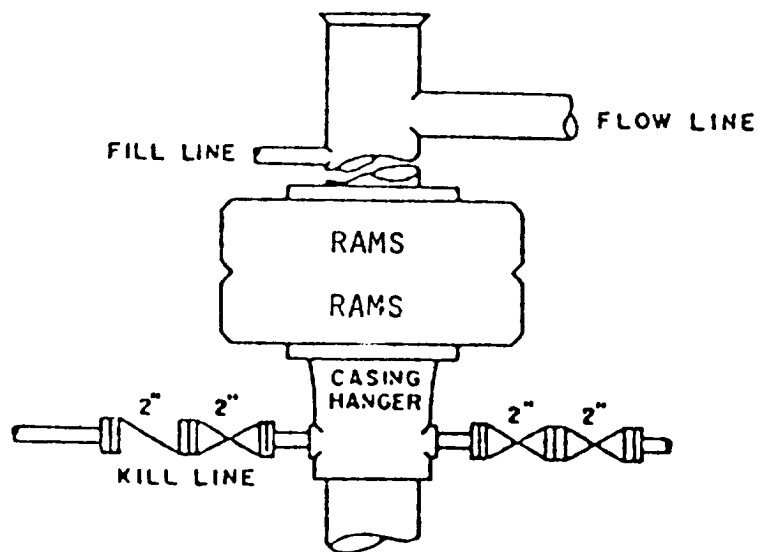
I hereby certify that the well location shown on this plat was plotted from field notes of actual surveys made by me or under my supervision, and that the same is true and correct to the best of my knowledge and belief.

Date Surveyed
May 4, 1984

Registered Professional Engineer and/or Land Surveyor

John W. West
Certificate No. JOHN W. WEST, 676

RONALD J. EIDSON, 3239



BLOWOUT PREVENTER ARRANGEMENT

Lyco Energy Corporation
Well #1 Amoco A Federal
SE $\frac{1}{4}$ SW $\frac{1}{4}$ Sec. 6-26S-30E
Eddy County, New Mexico

SUPPLEMENTAL DRILLING DATA

LYCO ENERGY CORPORATION
WELL #1 AMOCO A FEDERAL
SE $\frac{1}{4}$ SW $\frac{1}{4}$ SEC. 6-26S-30E
EDDY COUNTY, NEW MEXICO

1. SURFACE FORMATION: Quaternary.

2. ESTIMATED TOPS OF GEOLOGIC MARKERS (G.L. Elevation 3067'):

Rustler	300'	Delaware Sand	3390'
Salado	500'	Cherry Canyon	4300'
Base Lower Salt	3150'	Brushy Canyon	5600'
Delaware Lime	3350'	Bone Springs	7100'

3. POSSIBLE HYDROCARBON BEARING ZONES:

Bell Canyon	Oil & Gas
Cherry Canyon	Oil
Brushy Canyon	Oil

4. CASING DESIGN:

<u>Size</u>	<u>Interval</u>	<u>Weight</u>	<u>Grade</u>	<u>Joint</u>
13 3/8"	0 - 350'	48.0#	J-55	STC
8 5/8"	0 - 3350'	24.0#	J-55	STC
5 1/2"	0 - 5300'	14.0#	J-55	STC
	5300 - 7100'	15.5#	J-55	STC

5. PRESSURE CONTROL EQUIPMENT: Two Ram-Type Preventors. A sketch of BOP stack is attached.

6. CIRCULATING MEDIUM:

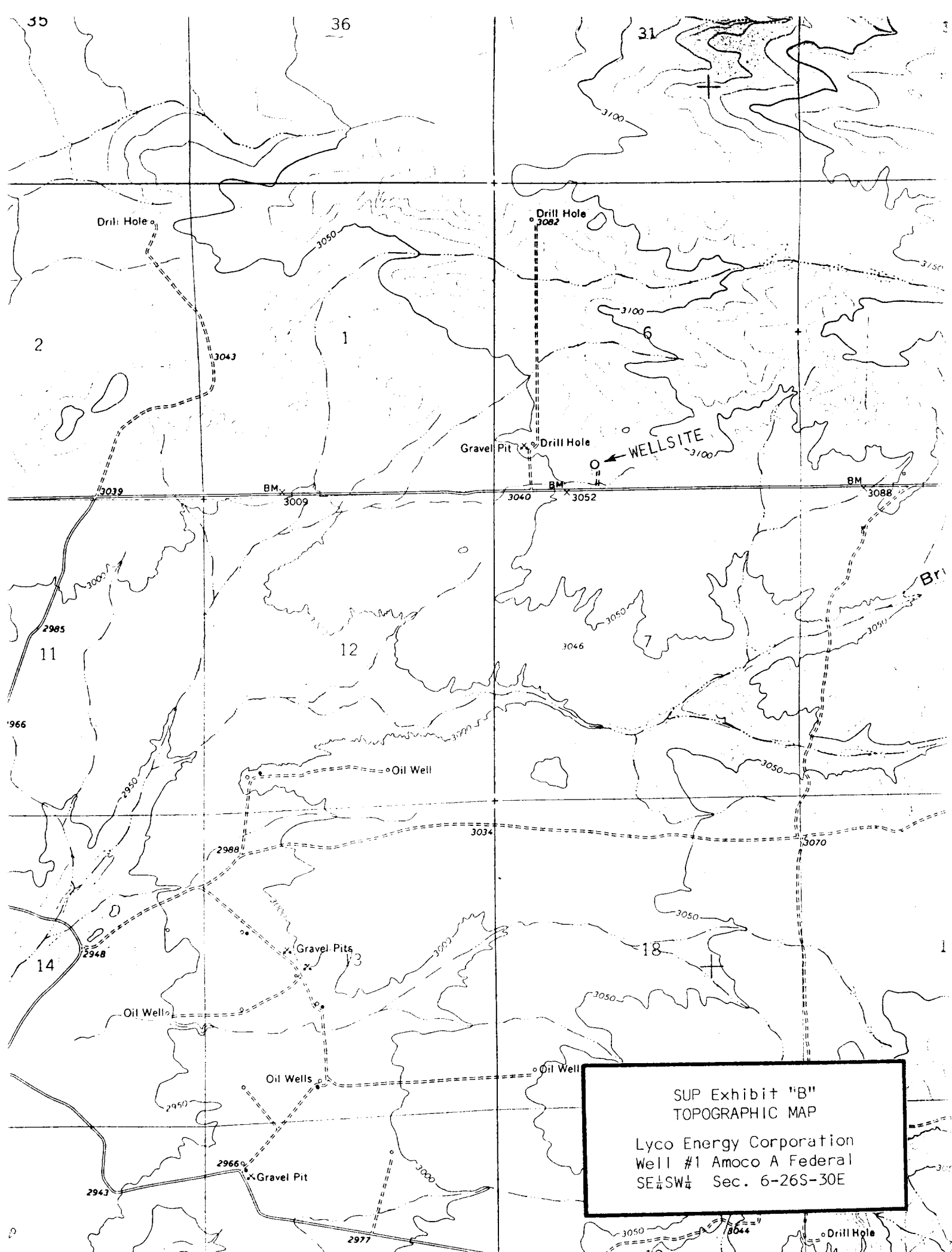
0 - 350'	Fresh water with gel or lime as needed for viscosity.
350 - 7200'	Brine conditioned as necessary for control of viscosity and water loss.

7. AUXILIARY EQUIPMENT: Drill string safety valve.

8. TESTING, LOGGING AND CORING PROGRAMS: No coring or DST's are planned. Electric logs will include a Compensated Neutron Log with Gamma Ray.

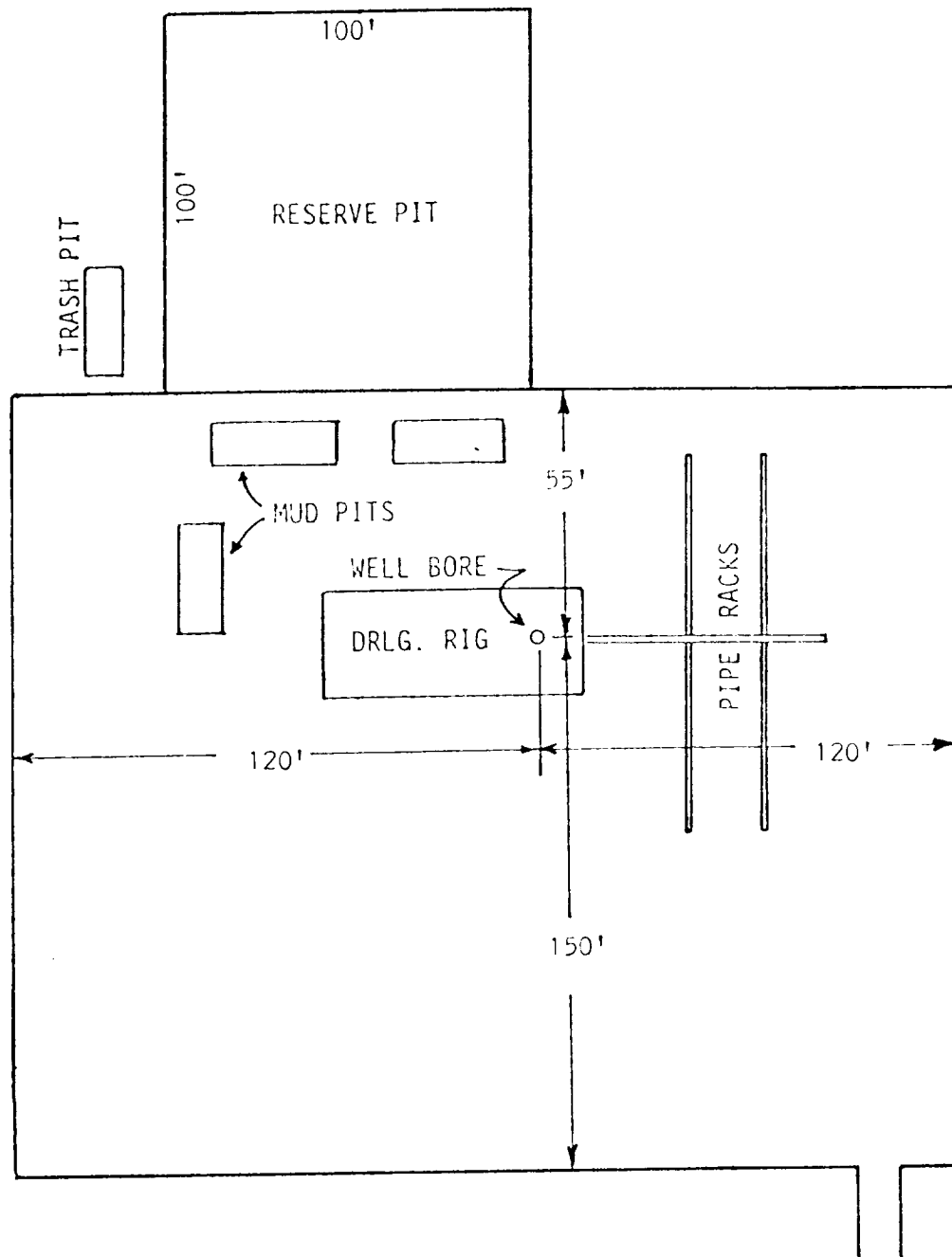
9. ABNORMAL PRESSURES, TEMPERATURES OR GAS: None anticipated.

10. ANTICIPATED STARTING DATE: It is planned that operations will commence about May 25, 1984. Duration of drilling, testing, and completion operations should be 2 to 6 weeks.



SUP Exhibit "B"
TOPOGRAPHIC MAP

Lyc0 Energy Corporation
Well #1 Amoco A Federal
SE $\frac{1}{4}$ SW $\frac{1}{4}$ Sec. 6-26S-30E



SUP Exhibit "D"
SKETCH OF WELL PAD

Lyc0 Energy Corporation
Well #1 Amoco A Federal
SE $\frac{1}{4}$ SW $\frac{1}{4}$ Sec. 6-26S-30E