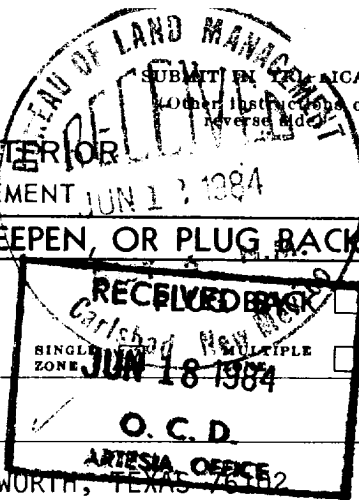


UNITED STATES  
DEPARTMENT OF THE INTERIOR  
BUREAU OF LAND MANAGEMENT



30-013-24703  
Form approved. *c/b*  
Budget Bureau No. 1004-0136  
Expires August 31, 1985

APPLICATION FOR PERMIT TO DRILL, DEEPEN, OR PLUG BACK

1A. TYPE OF WORK

DRILL ☒

DEEPEN ☐

B. TYPE OF WELL

OIL  
WELL ☒

GAS  
WELL ☐

OTHER ☐

2. NAME OF OPERATOR

WORTH PETROLEUM COMPANY

3. ADDRESS OF OPERATOR

P. O. BOX 17406, FORT WORTH, TEXAS 76112

4. LOCATION OF WELL (Report location clearly and in accordance with any State requirements.)\*

At surface

2310' FNL AND 330' FEL OF SECTION 22

At proposed prod. zone

14. DISTANCE IN MILES AND DIRECTION FROM NEAREST TOWN OR POST OFFICE\*

16 AIR MILES SOUTH-SOUTHEAST OF MALAGA, NEW MEXICO

15. DISTANCE FROM PROPOSED\*

LOCATION TO NEAREST  
PROPERTY OR LEASE LINE, FT.  
(Also to nearest drlg. unit line, if any)

330'

16. NO. OF ACRES IN LEASE

200

17. NO. OF ACRES ASSIGNED  
TO THIS WELL

40

18. DISTANCE FROM PROPOSED LOCATION\*  
TO NEAREST WELL, DRILLING, COMPLETED,  
OR APPLIED FOR, ON THIS LEASE, FT.

-

19. PROPOSED DEPTH

5200'

20. ROTARY OR CABLE TOOLS

ROTARY

21. ELEVATIONS (Show whether DF, RT, GR, etc.)

2920' GL

22. APPROX. DATE WORK WILL START\*

UPON APPROVAL

23. PROPOSED CASING AND CEMENTING PROGRAM

SIZE OF HOLE	SIZE OF CASING	WEIGHT PER FOOT	SETTING DEPTH	QUANTITY OF CEMENT
12-1/4"	8-5/8"	24#	450'	SUFFICIENT TO CIRCULATE
7-7/8"	5-1/2"	14#	5200'	TO FILL TO BASE OF SALT

PRODUCING ZONE WILL BE PERFORATED AND STIMULATED AS NECESSARY.

SEE ATTACHED FOR: SUPPLEMENTAL DRILLING DATA  
BOP SKETCH  
SURFACE USE AND OPERATIONS PLAN

*Post. and  
SD-1 with BK  
6-22-84*

IN ABOVE SPACE DESCRIBE PROPOSED PROGRAM: If proposal is to deepen or plug back, give data on present productive zone and proposed new productive zone. If proposal is to drill or deepen directionally, give pertinent data on subsurface locations and measured and true vertical depths. Give blowout preventer program, if any.

24.

SIGNED

*Arthur R. Brown*  
Arthur R. Brown

TITLE

Agent

DATE

June 11, 1984

(This space for Federal or State office use)

PERMIT NO.

APPROVAL DATE

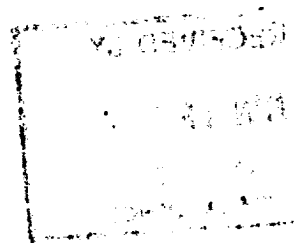
APPROVED BY  
CONDITIONS OF APPROVAL, IF ANY:

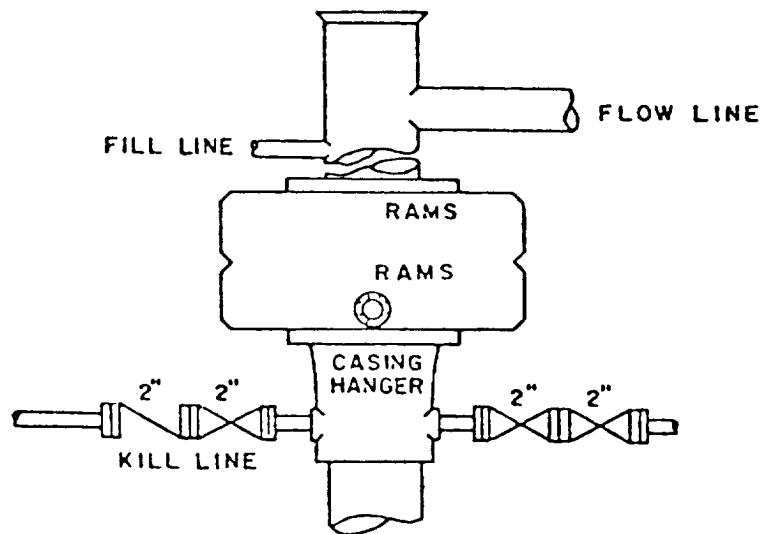
TITLE

*Carlsgad*  
AREA MANAGER  
CARLSBAD RESOURCE AREA

*6-15-84*  
APPROVAL SUBJECT TO  
GENERAL REQUIREMENTS AND  
SPECIAL STIPULATIONS  
ATTACHED

\*See Instructions On Reverse Side





BOP STACK

3000 PSI WORKING PRESSURE

BOP ARRANGEMENT

NEW MEXICO OIL CONSERVATION COMMISSION  
WELL LOCATION AND ACREAGE DEDICATION PLAT

Form C-102  
Supersedes C-128  
Effective 1-1-65

All distances must be from the outer boundaries of the Section

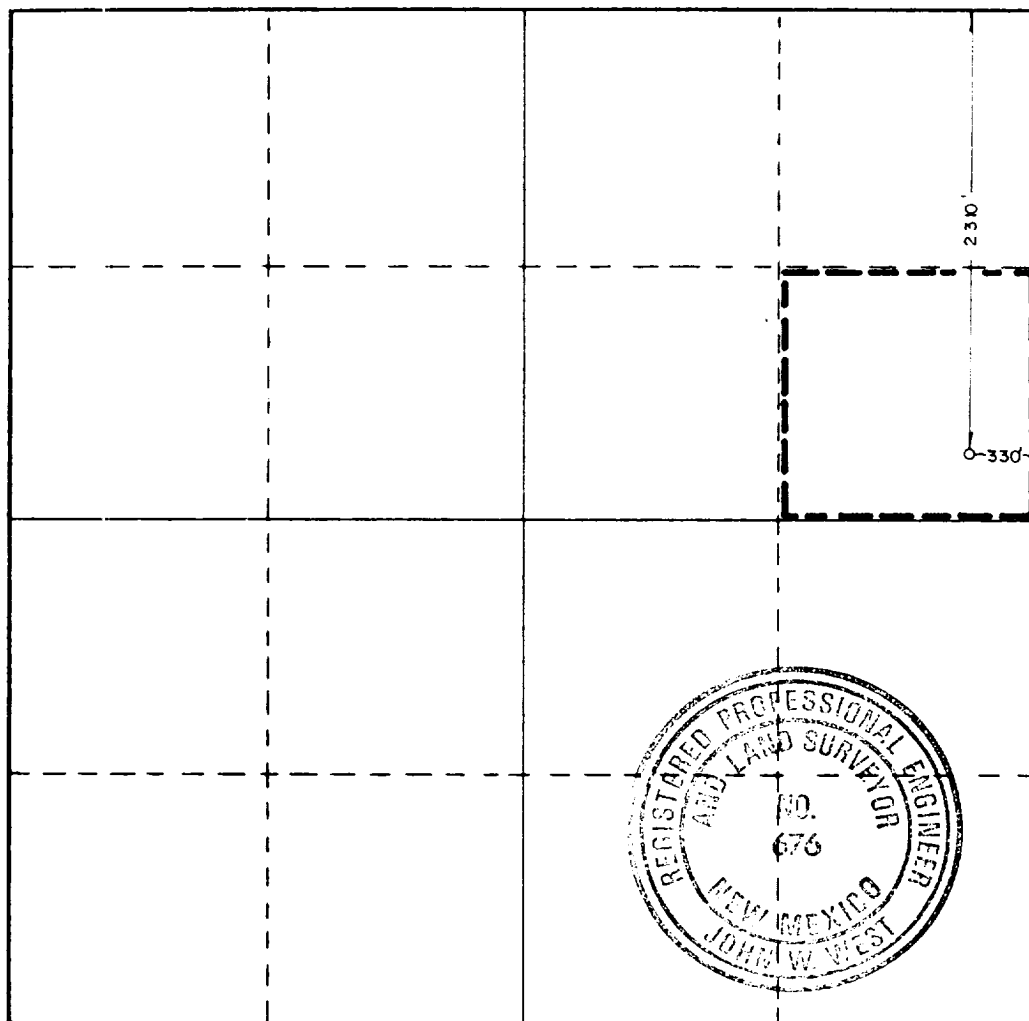
Operator WORTH PETROLEUM COMPANY			Lease WORTH FEDERAL			Well No. 1		
Init Letter H	Section 22	Township 26 SOUTH	Range 29 EAST	County EDDY				
Actual Footage Location of Well: 2310 feet from the NORTH line and 330 feet from the EAST line								
Ground Level Elev. 2920.0	Producing Formation DELAWARE		Pool UNDES. BRUSHY DRAW DELAWARE		Dedicated Acreage: 40 Acres			

1. Outline the acreage dedicated to the subject well by colored pencil or hachure marks on the plat below.
2. If more than one lease is dedicated to the well, outline each and identify the ownership thereof (both as to working interest and royalty).
3. If more than one lease of different ownership is dedicated to the well, have the interests of all owners been consolidated by communitization, unitization, force-pooling, etc?

☐ Yes ☐ No If answer is "yes," type of consolidation \_\_\_\_\_

If answer is "no," list the owners and tract descriptions which have actually been consolidated. (Use reverse side of this form if necessary.) \_\_\_\_\_

No allowable will be assigned to the well until all interests have been consolidated (by communitization, unitization, forced-pooling, or otherwise) or until a non-standard unit, eliminating such interests, has been approved by the Commission.



CERTIFICATION

I hereby certify that the information contained herein is true and complete to the best of my knowledge and belief.

Name Arthur R. Brown  
Position  
Agent  
Company  
WORTH PETROLEUM COMPANY  
Date  
JUNE 11, 1984

I hereby certify that the well location shown on this plat was plotted from field notes of actual surveys made by me or under my supervision, and that the same is true and correct to the best of my knowledge and belief.

Date Surveyed  
MAY 26, 1984  
Registered Professional Engineer  
and/or Land Surveyor

John W. West  
Certificate No. JOHN W. WEST, 676  
RONALD J. EIDSON, 3239

0 330 660 990 1320 1650 1980 2310 2640 2970 3300 3630 3960 4290 4620 4950 5280 5610 5940 6270 6600

## SUPPLEMENTAL DRILLING DATA

WORTH PETROLEUM COMPANY

WELL NO.1 WORTH FEDERAL

1. SURFACE FORMATION: Quaternary.

2. ESTIMATED TOPS OF GEOLOGIC MARKERS:

Rustler Anhydrite	300'
Base Lower Salt	2700'
Delaware Lime	2880'
Delaware Sand	2912'
Cherry Canyon	3820'

3. ANTICIPATED POSSIBLE HYDROCARBON BEARING ZONES:

Cherry Canyon      Oil

4. PROPOSED CASING AND CEMENTING PROGRAM:

CASING SIZE	SETTING DEPTH		WEIGHT	GRADE	JOINT
	FROM	TO			
8-5/8"	0	450'	24#	K-55	STC
5-1/2"	0	5200'	14#	K-55	STC

8-5/8" casing to be cemented with approximately 250 sacks of Class "C" cement. Cement to circulate.

5-1/2" casing to be cemented with sufficient Light cement, tailed in with 200 sacks of Class "C" cement, to fill back to base of salt.

Equivalent or adequate grades and weights of casing may be substituted at time casing is run, depending on availability.

5. PRESSURE CONTROL EQUIPMENT:

A 3000 psi working pressure, double ram type preventer will be in use while drilling below the surface casing.

A BOP sketch is attached.

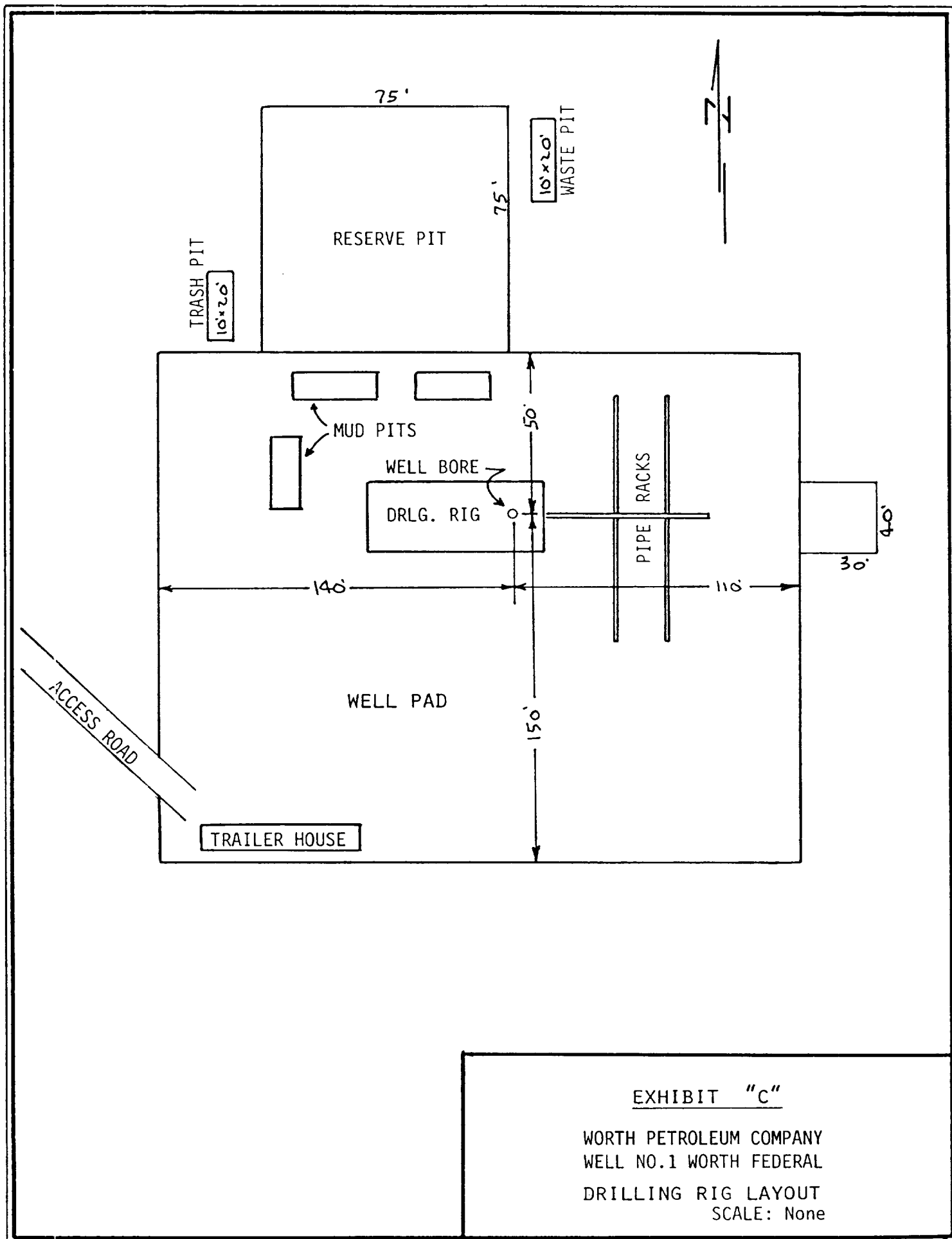
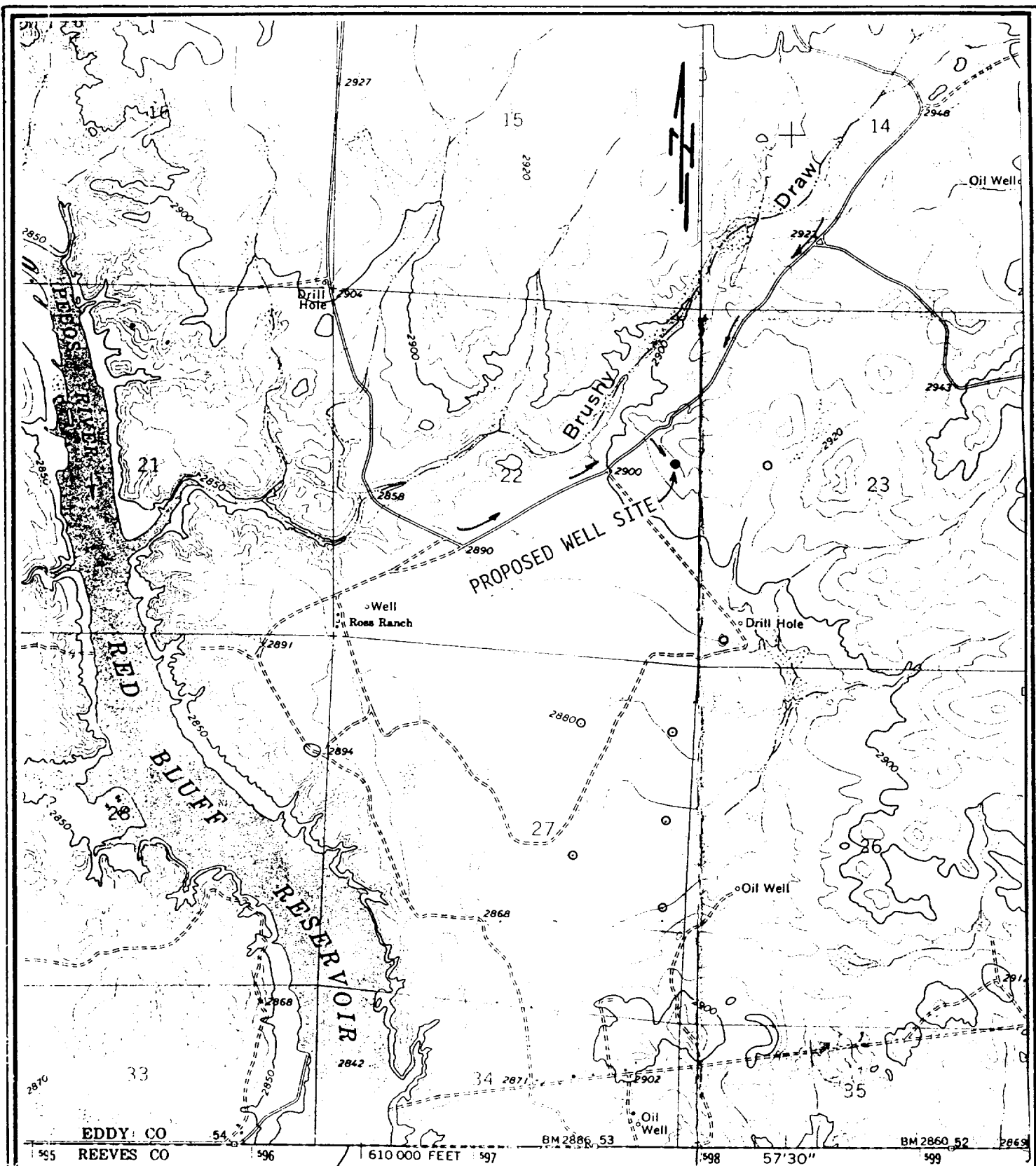


EXHIBIT "C"

WORTH PETROLEUM COMPANY  
WELL NO.1 WORTH FEDERAL  
DRILLING RIG LAYOUT  
SCALE: None



# EXHIBIT "D"

WORTH PETROLEUM COMPANY  
 WELL NO.1 WORTH FEDERAL  
 2310' FNL & 330' FEL SEC. 22, T. 26 S., R. 29 E.  
 EDDY COUNTY, N.M.  
 TOPO PLAT