

UNITED STATES  
DEPARTMENT OF THE INTERIOR  
BUREAU OF LAND MANAGEMENT  
AUG 13 1984  
RECEIVED  
Other instructions on  
reverse side  
ARTESIA, OFFICE  
PLUG BACK

APPLICATION FOR PERMIT TO DRILL, DEEPEN, OR PLUG BACK

1a. TYPE OF WORK

DRILL ☒

DEEPEN ☐

PLUG BACK ☐

b. TYPE OF WELL

OIL WELL ☒

GAS WELL ☐

OTHER ☐

SINGLE ZONE ☐

MULTIPLE ZONE ☐

2. NAME OF OPERATOR

J.C. Williamson

3. ADDRESS OF OPERATOR

P.O. Box 16 Midland, Texas 79702

4. LOCATION OF WELL (Report location clearly and in accordance with any State requirements.)\*

At surface

1980' FNL & 1980' FWL

At proposed prod. zone

1980' FNL & 1980' FWL

14. DISTANCE IN MILES AND DIRECTION FROM NEAREST TOWN OR POST OFFICE\*

14 miles SE of Malaga, New Mexico

10. DISTANCE FROM PROPOSED\*

LOCATION TO NEAREST  
PROPERTY OR LEASE LINE, FT.  
(Also to nearest drlg. unit line, if any)

1980'

16. NO. OF ACRES IN LEASE

280

17. NO. OF ACRES ASSIGNED  
TO THIS WELL

40

18. DISTANCE FROM PROPOSED LOCATION\*

TO NEAREST WELL, DRILLING, COMPLETED,  
OR APPLIED FOR, ON THIS LEASE, FT.

1320'

19. PROPOSED DEPTH

6350'

20. ROTARY OR CABLE TOOLS

Rotary

21. ELEVATIONS (Show whether DF, RT, GR, etc.)

2941.7 2949.0 GL

22. APPROX. DATE WORK WILL START\*

August 15, 1984

23. PROPOSED CASING AND CEMENTING PROGRAM

SIZE OF HOLE	SIZE OF CASING	WEIGHT PER FOOT	SETTING DEPTH	QUANTITY OF CEMENT
17 1/2"	12 3/4"	35#	3500' 500'	375 sx Circulate
11"	8 5/8"	24# & 32#	2900'	150 sx tie back to base of salt
7 7/8"	4 1/2"	10.5#	6250'	1350 sx in 2 stages

IN ABOVE SPACE DESCRIBE PROPOSED PROGRAM: If proposal is to deepen or plug back, give data on present productive zone and proposed new productive zone. If proposal is to drill or deepen directionally, give pertinent data on subsurface locations and measured and true vertical depths. Give blowout preventer program, if any.

24.

SIGNED

*Kela D. Giles*

TITLE Agent

DATE July 17, 1984

(This space for Federal or State office use)

PERMIT NO.

APPROVAL DATE

APPROVED BY

AREA MANAGER

CARLSBAD RESOURCE AREA

DATE

8-10-84

CONDITIONS OF APPROVAL, IF ANY:

APPROVAL SUBJECT TO  
GENERAL REQUIREMENTS AND  
SPECIAL STIPULATIONS  
ATTACHED

\*See Instructions On Reverse Side

**N MEXICO OIL CONSERVATION COMMISSION  
WELL LOCATION AND ACREAGE DEDICATION PLAT**

Form C-102  
Supersedes C-128  
Effective 1-1-65

All distances must be from the outer boundaries of the Section

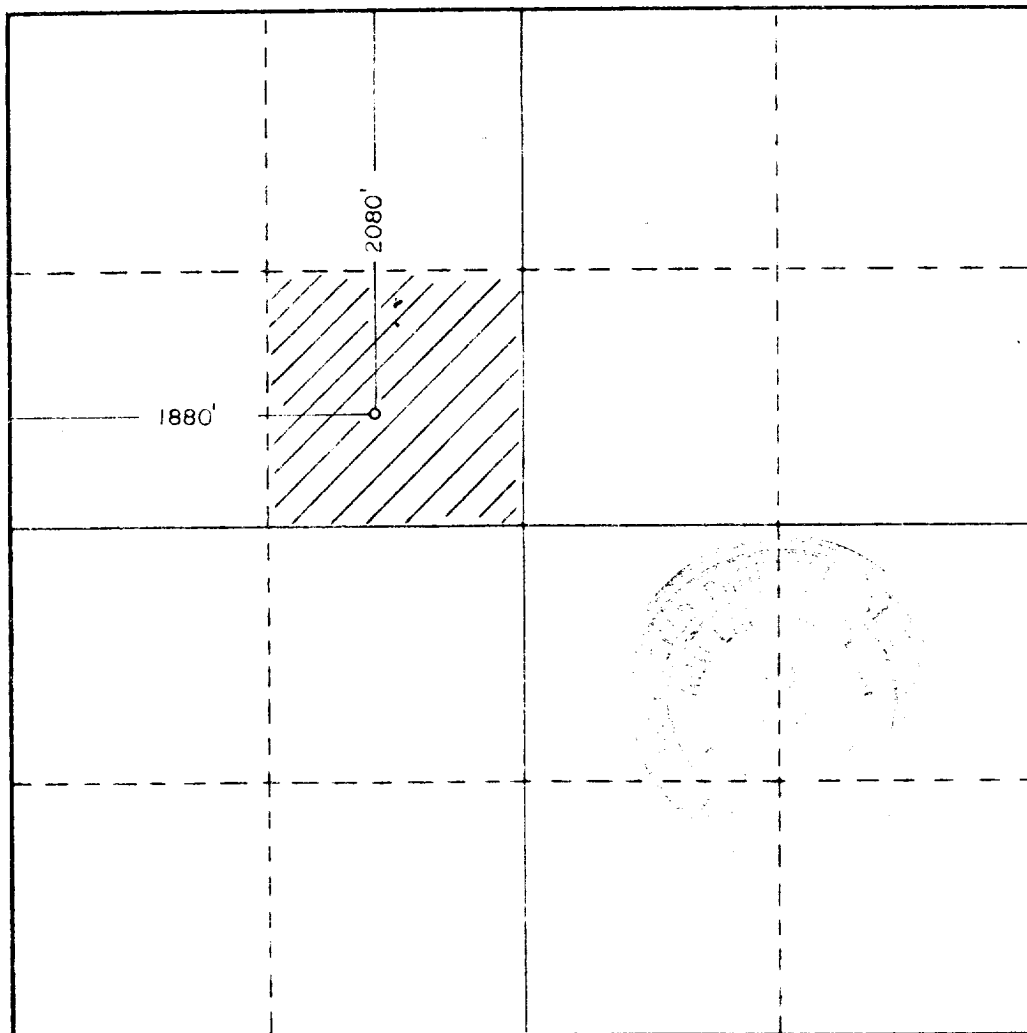
Operator <b>J. C. WILLIAMSON</b>			Lease <b>UCBHW FED</b>		Well No. <b>6</b>
Unit Letter <b>F</b>	Section <b>25</b>	Township <b>26S</b>	Range <b>29E</b>	County <b>EDDY</b>	
Actual Footage Location of Well: <b>2080</b> feet from the <b>NORTH</b> line and <b>1880</b> feet from the <b>WEST</b> line					
Ground Level Elev. <b>2941.7</b>	Producing Formation <b>DELAWARE</b>		Pool <b>BRUSHY DRAW DELAWARE</b>		Dedicated Acreage: <b>40</b> Acres

1. Outline the acreage dedicated to the subject well by colored pencil or hachure marks on the plat below.
2. If more than one lease is dedicated to the well, outline each and identify the ownership thereof (both as to working interest and royalty). **N/A**
3. If more than one lease of different ownership is dedicated to the well, have the interests of all owners been consolidated by communitization, unitization, force-pooling, etc?

☐ Yes ☐ No If answer is "yes," type of consolidation **N/A**

If answer is "no," list the owners and tract descriptions which have actually been consolidated. (Use reverse side of this form if necessary.) **N/A**

No allowable will be assigned to the well until all interests have been consolidated (by communitization, unitization, forced-pooling, or otherwise) or until a non-standard unit, eliminating such interests, has been approved by the Commission.



**CERTIFICATION**

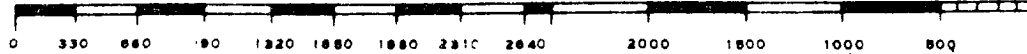
I hereby certify that the information contained herein is true and complete to the best of my knowledge and belief.

Name **JAN PFISTER**  
Position **AGENT**  
Company **J.C. WILLIAMSON**  
Date **AUGUST 8, 1984**

I hereby certify that the well location shown on this plat was plotted from field notes of actual surveys made by me or under my supervision, and that the same is true and correct to the best of my knowledge and belief.

Date surveyed **8/5/84**  
Registered Professional Engineer and/or Land Surveyor

**John W West**  
Certificate No. **JOHN W WEST, 676**  
**RONALD J. EIDSON, 3239**



**MEXICO OIL CONSERVATION COMMISSION  
WELL LOCATION AND ACREAGE DEDICATION PLAT**

Form C-102  
Supersedes C-128  
Effective 1-1-65

All distances must be from the outer boundaries of the Section.

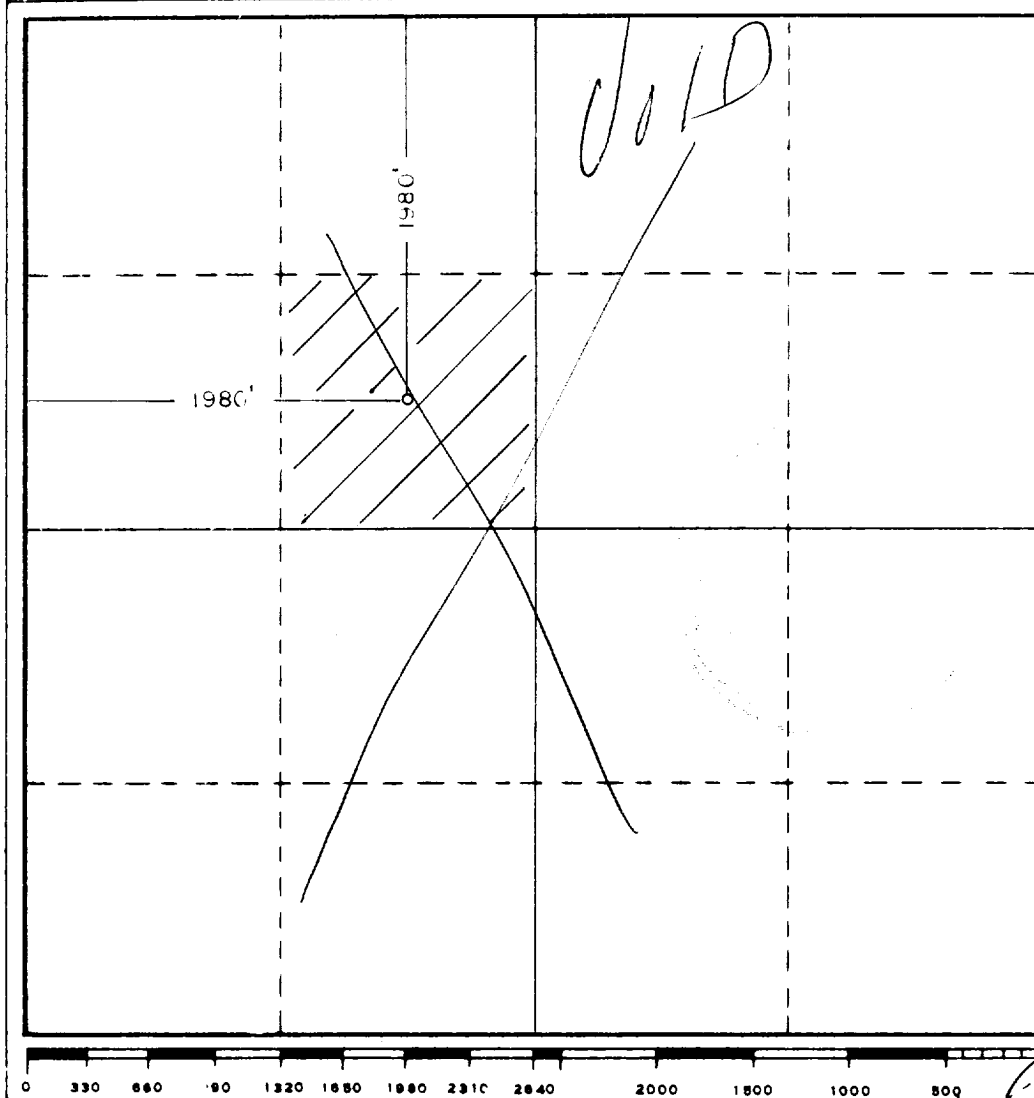
Operator <b>J. C. WILLIAMSON</b>			Lease <b>UCBHW FED</b>			Well No. <b>6</b>		
Tract Letter <b>F</b>	Section <b>25</b>	Township <b>26S</b>	Range <b>29E</b>	County <b>EDDY</b>				
Actual Footage Location of Well: <div style="display: flex; justify-content: space-between;"> <span>1980 feet from the NORTH line and</span> <span>1980 feet from the WEST line</span> </div>								
Ground Level Elev. <b>2949.0</b>	Producing Formation <b>Delaware</b>		Pool <b>Brushy Draw Delaware</b>			Dedicated Acreage: <b>40</b> Acres		

1. Outline the acreage dedicated to the subject well by colored pencil or hachure marks on the plat below.
2. If more than one lease is dedicated to the well, outline each and identify the ownership thereof (both as to working interest and royalty).  

N/A
3. If more than one lease of different ownership is dedicated to the well, have the interests of all owners been consolidated by communitization, unitization, force-pooling, etc?  
  
☐ Yes    ☐ No    If answer is "yes," type of consolidation N/A

If answer is "no," list the owners and tract descriptions which have actually been consolidated. (Use reverse side of this form if necessary.) N/A

No allowable will be assigned to the well until all interests have been consolidated (by communitization, unitization, forced-pooling, or otherwise) or until a non-standard unit, eliminating such interests, has been approved by the Commission.

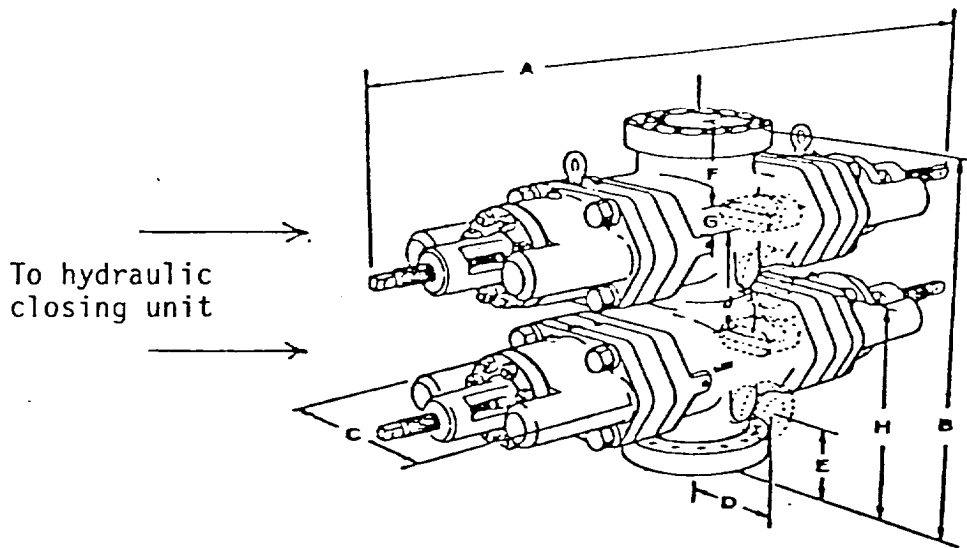


<b>CERTIFICATION</b>	
I hereby certify that the information contained herein is true and complete to the best of my knowledge and belief.	
<i>John W. West</i>	
Name	<b>J.C. Williamson</b>
Position	<b>Operator</b>
Company	<b>J.C. Williamson</b>
Date	<b>July 17, 1984</b>
I hereby certify that the well location shown on this plat was plotted from field notes of actual surveys made by me or under my supervision, and that the same is true and correct to the best of my knowledge and belief.	
Date Surveyed	<b>7/14/84</b>
Registered Professional Engineer and/or Land Surveyor	
<i>John W. West</i>	
Certificate No.	<b>JOHN W. WEST, 676</b>
<b>RONALD J. EIDSON, 3239</b>	

EXHIBIT "E"

BOP Diagram

After 12-3/4 surface casing has been set and cement circulated to the surface, an 11" double ram BOP, as shown below will be put on the hole. This blowout preventer will be connected to a hydraulically controlled closing unit. The pressure rating on this BOP is 3000#, and will have blank and 4-1/2" pipe rams.



J.C. Williamson  
UCBHW #6  
1980' FNL & 1980' FWL  
Sec. 25, T-26-S, R-29-E  
Eddy County, New Mexico

## SUPPLEMENTAL DRILLING DATA

J. C. WILLIAMSON  
UCBHW FEDERAL # 6

1. SURFACE FORMATION: Quaternary Alluvium

2. ESTIMATED TOPS OF GEOLOGIC MARKERS:

Rustler Anhydrite	300'
Lamar Shale	3000'
Ramsey Sand	3025'
Olds Sand	3025'
Top Cherry Canyon	4150'
Top Brushy Canyon	5100'

3. ANTICIPATED POSSIBLE WATER AND HYDROCARBON BEARING ZONES:

Fresh Water	above 100'
Delaware (oil)	3025'
Brushy Canyon (oil)	5100' - 5150' - 5600' - 5650'
Lower Brushy Canyon (oil)	6150' - 6200'

4. PROPOSED CASING AND CEMENTING PROGRAM:

Casing program is shown on Form 9-331 C.

Hole for surface casing will be drilled to a depth below fresh water zones. 12-3/4" Surface casing will be run to bottom and cemented to the surface with 375 sacks of Class "C" cement to protect fresh water zones. 12-3/4" pipe will be run and cemented at 350' feet.

8-5/8" pipe will be run and cemented at 2900 feet, prior to entering Delaware section and 8-5/8" protection casing will be cemented with 150 sacks of Class "C" cement at 2900 feet, sufficient to tie back to the base of the salt.

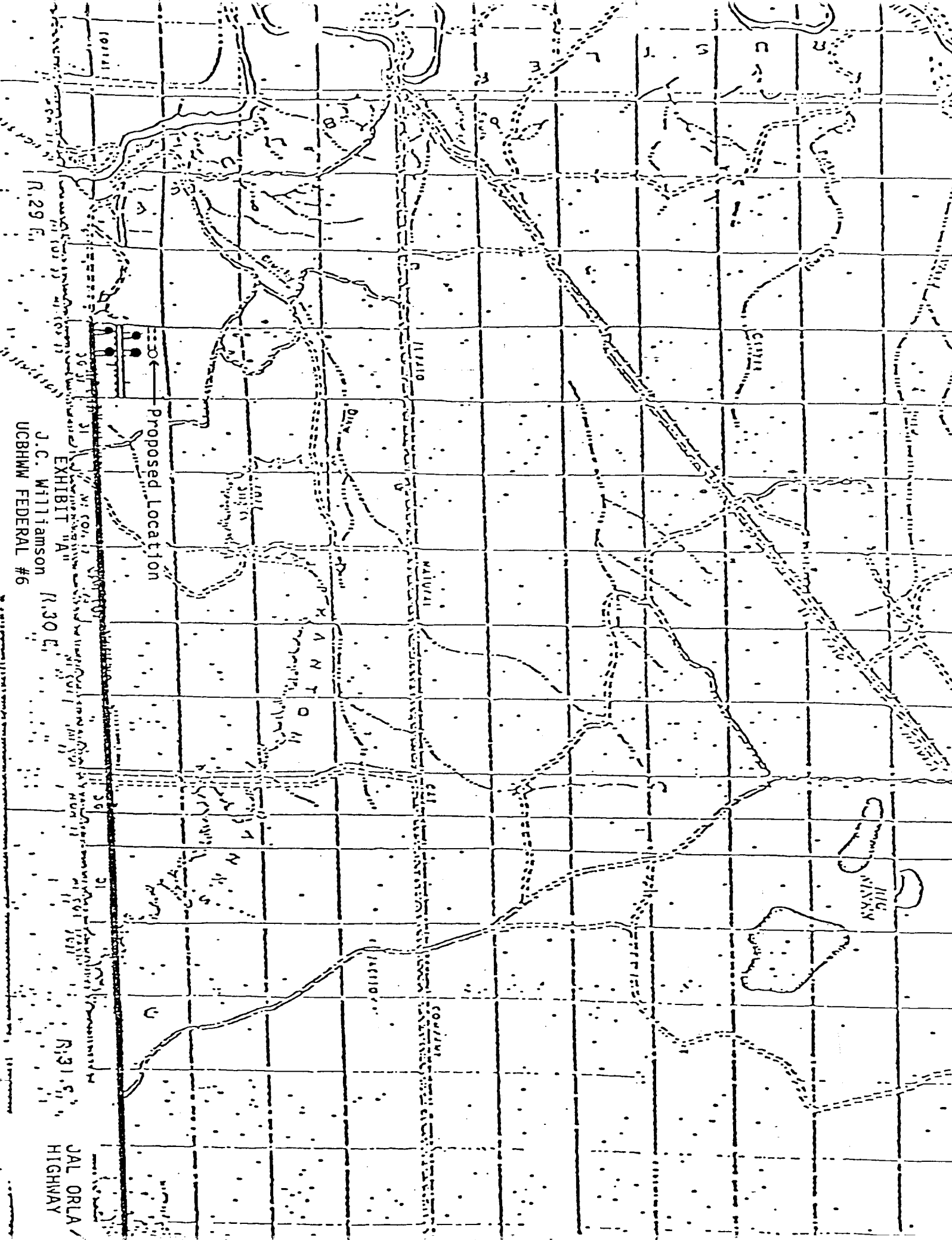
4-1/2" production casing will be cemented at a total depth or shallower if significant shows are encountered in the Brushy Canyon formation, with 1350 sacks Class "C" cement 50-50 poz in 2 stages with DV tool set at 4600 feet.

5. PRESSURE CONTROL EQUIPMENT:

Pressure control equipment will consist of a double ram hydraulically controlled blow out preventer.

6. CIRCULATING MEDIUM:

The circulating medium will be fresh water down to 350 feet and brine water in the rest of the hole.



J.C. Williamson  
EXHIBIT "A"  
UCBHMW FEDERAL #6

R.29 C.

R.30 C.

R.31 C.

JAL ORLA  
HIGHWAY

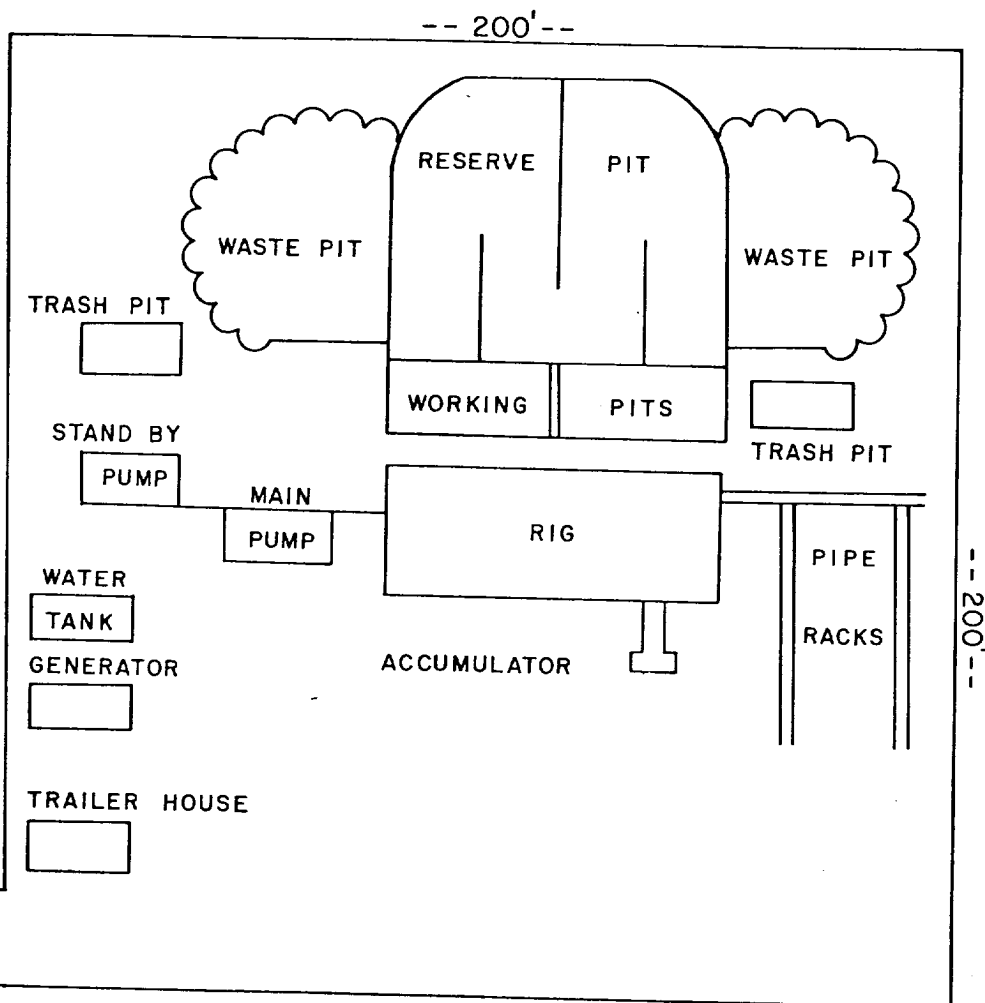


EXHIBIT "D"

J. C. Williamson  
#6 UCBHWW Federal