

Form 3160-3
(November 1983)
(formerly 9-331C)

NM OIL CONS. COMMISSION

Drawer DD

Artesia, NM 88210

RECEIVED BY

SUBMIT IN 7 LOCATE*

AUG 23 1984 (See instructions on reverse side)

Form approved.
Budget Bureau No. 1004-0136
Expires August 31, 1985

UNITED STATES
DEPARTMENT OF THE INTERIOR
BUREAU OF LAND MANAGEMENT
ARTESIA, OFFICE

APPLICATION FOR PERMIT TO DRILL, DEEPEN, OR PLUG BACK

1a. TYPE OF WORK

DRILL ☒

DEEPEN ☐

PLUG BACK ☐

b. TYPE OF WELL

OIL WELL ☒

GAS WELL ☐

OTHER

SINGLE ZONE ☐

MULTIPLE ZONE ☐

2. NAME OF OPERATOR

J.C. WILLIAMSON

3. ADDRESS OF OPERATOR

P.O. BOX 16 MIDLAND, TEXAS 79702

4. LOCATION OF WELL (Report location clearly and in accordance with any State requirements.)*

At surface

1980' FNL & 660' FWL
At proposed prod. zone

1980' FNL & 660' FWL

14. DISTANCE IN MILES AND DIRECTION FROM NEAREST TOWN OR POST OFFICE*

13 miles S.E. of Malaga, New Mexico

15. DISTANCE FROM PROPOSED*

LOCATION TO NEAREST
PROPERTY OR LEASE LINE, FT.
(Also to nearest drlg. unit line, if any)

660'

18. DISTANCE FROM PROPOSED LOCATION*
TO NEAREST WELL, DRILLING, COMPLETED,
OR APPLIED FOR, ON THIS LEASE, FT.

660'

16. NO. OF ACRES IN LEASE

280

19. PROPOSED DEPTH

6350'

17. NO. OF ACRES ASSIGNED
TO THIS WELL

40

20. ROTARY OR CABLE TOOLS

Rotary

21. ELEVATIONS (Show whether DF, RT, GR, etc.)

2870.0 GL

22. APPROX. DATE WORK WILL START*

August 15, 1984

23. PROPOSED CASING AND CEMENTING PROGRAM

SIZE OF HOLE	SIZE OF CASING	WEIGHT PER FOOT	SETTING DEPTH	QUANTITY OF CEMENT
17-1/2"	12-3/4"	35#	3500' <i>ORP</i>	425 sx CIRCULATE
11"	8-5/8"	24# & 32#	2900'	150 sx tie back to base of salt
7-7/8"	4-1/2"	10.5#	6350'	1350 sx in 2 stages

IN ABOVE SPACE DESCRIBE PROPOSED PROGRAM: If proposal is to deepen or plug back, give data on present productive zone and proposed new productive zone. If proposal is to drill or deepen directionally, give pertinent data on subsurface locations and measured and true vertical depths. Give blowout preventer program, if any.

24.

SIGNED

TITLE Agent

DATE July 18, 1984

(This space for Federal or State office use)

PERMIT NO.

APPROVAL DATE

APPROVED BY

AREA MANAGER
CARLSBAD RESOURCE AREA

CONDITIONS OF APPROVAL, IF ANY:

APPROVAL SUBJECT TO
GENERAL REQUIREMENTS AND
SPECIAL STIPULATIONS
ATTACHED

*See Instructions On Reverse Side

Title 18 U.S.C. Section 1001, makes it a crime for any person knowingly and willfully to make to any department or agency of the United States any false, fictitious or fraudulent statements or representations as to any matter within its jurisdiction.

MEXICO OIL CONSERVATION COMMISSION
WELL LOCATION AND ACREAGE DEDICATION PLAT

Form C-102
 Supersedes C-128
 Effective 1-1-65

All distances must be from the outer boundaries of the Section

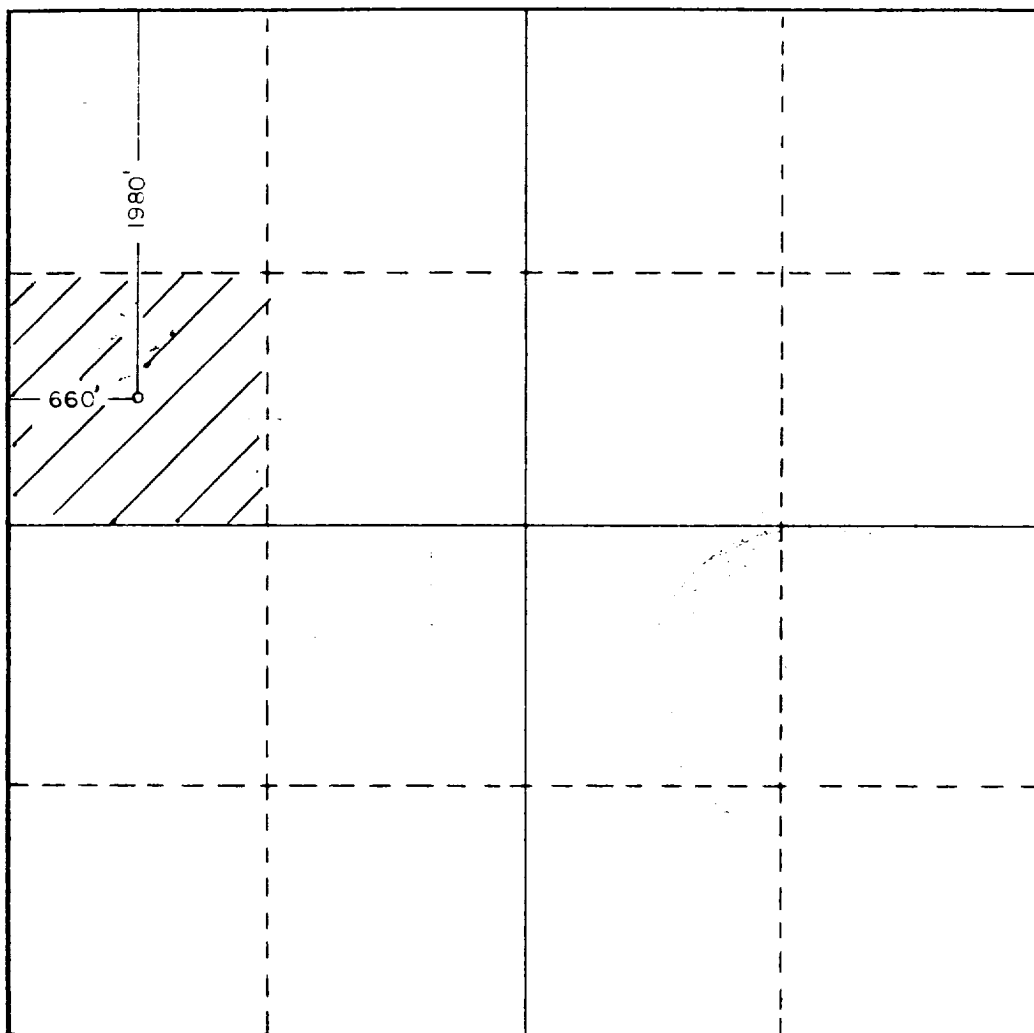
Operator J. C. WILLIAMSON			Lease HOLLY FED "A"		Well No. 3
Unit Letter E	Section 26	Township 26S	Range 29E	County EDDY	
Actual Footage Location of Well: 1980 feet from the NORTH line and 660 feet from the WEST line					
Ground Level Elev. 2870.0	Producing Formation Delaware		Pool Brushy Draw Delaware		Dedicated Acreage: 40 Acres

1. Outline the acreage dedicated to the subject well by colored pencil or hatchure marks on the plat below.
2. If more than one lease is dedicated to the well, outline each and identify the ownership thereof (both as to working interest and royalty). N/A
3. If more than one lease of different ownership is dedicated to the well, have the interests of all owners been consolidated by communitization, unitization, force-pooling, etc?

☐ Yes ☐ No If answer is "yes," type of consolidation N/A

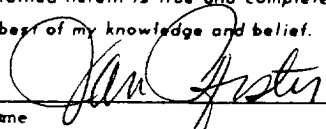
If answer is "no," list the owners and tract descriptions which have actually been consolidated. (Use reverse side of this form if necessary.) N/A

No allowable will be assigned to the well until all interests have been consolidated (by communitization, unitization, forced-pooling, or otherwise) or until a non-standard unit, eliminating such interests, has been approved by the Commission.



CERTIFICATION

I hereby certify that the information contained herein is true and complete to the best of my knowledge and belief.

Name

Jan Pfister

Position
Agent

Company
J.C. Williamson

Date
July 18, 1984

I hereby certify that the well location shown on this plat was plotted from field notes of actual surveys made by me or under my supervision, and that the same is true and correct to the best of my knowledge and belief.

Date Surveyed
7/12 & 7/14/84

Registered Professional Engineer and/or Land Surveyor


 Certificate No. **JOHN W. WEST, 676**
RONALD J. EIDSON, 3239

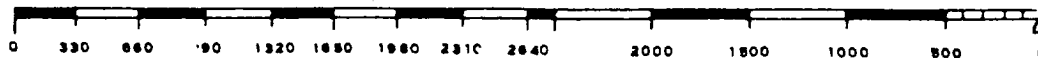
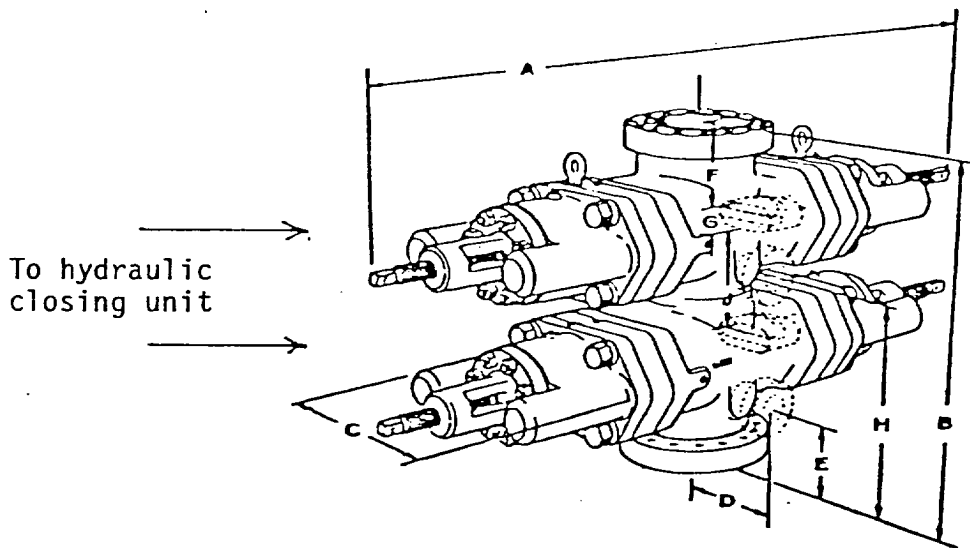


EXHIBIT "E"

BOP Diagram

After 12-3/4 surface casing has been set and cement circulated to the surface, an 11" double ram BOP, as shown below will be put on the hole. This blowout preventer will be connected to a hydraulically controlled closing unit. The pressure rating on this BOP is 3000#, and will have blank and 4-1/2" pipe rams.



J.C. Williamson
HOLLY FEDERAL "A" #3

SUPPLEMENTAL DRILLING DATA

J. C. WILLIAMSON
HOLLY FEDERAL "A" #3

1. SURFACE FORMATION: Quaternary Alluvium

2. ESTIMATED TOPS OF GEOLOGIC MARKERS:

Rustler Anhydrite	300'
Lamar Shale	3000'
Ramsey Sand	3025'
Olds Sand	3025'
Top Cherry Canyon	4150'
Top Brushy Canyon	5100'

3. ANTICIPATED POSSIBLE WATER AND HYDROCARBON BEARING ZONES:

Fresh Water	above 100'
Delaware (oil)	3025'
Brushy Canyon (oil)	5100' - 5150' - 5600' - 5650'
Lower Brushy Canyon (oil)	6150' - 6200'

4. PROPOSED CASING AND CEMENTING PROGRAM:

Casing program is shown on Form 9-331 C.

Hole for surface casing will be drilled to a depth below fresh water zones. 12-3/4" surface casing will be run to 350 feet, below all fresh water zones and will be cemented to the surface with 425 sacks of Class "C" cement.

8-5/8" casing will be run and cemented at 2900 feet, prior to entering Delaware section and will be cemented with 150 sacks of Class "C" cement at 2900 feet, tying same back into salt section.

4-1/2" casing will be run to total depth and will be cemented at a total depth if significant shows are encountered in the Brushy Canyon formation, with 1350 sacks Class "C" cement 50-50 poz in stages with DV tool set at 4600 feet plus or minus.

5. PRESSURE CONTROL EQUIPMENT:

Pressure control equipment will consist of a 3000# double ram hydraulically controlled blow out preventer and a 3000# choke manifold.

6. CIRCULATING MEDIUM:

The circulating medium will be fresh water down to 350 feet and brine water in the rest of the hole.

מחזור

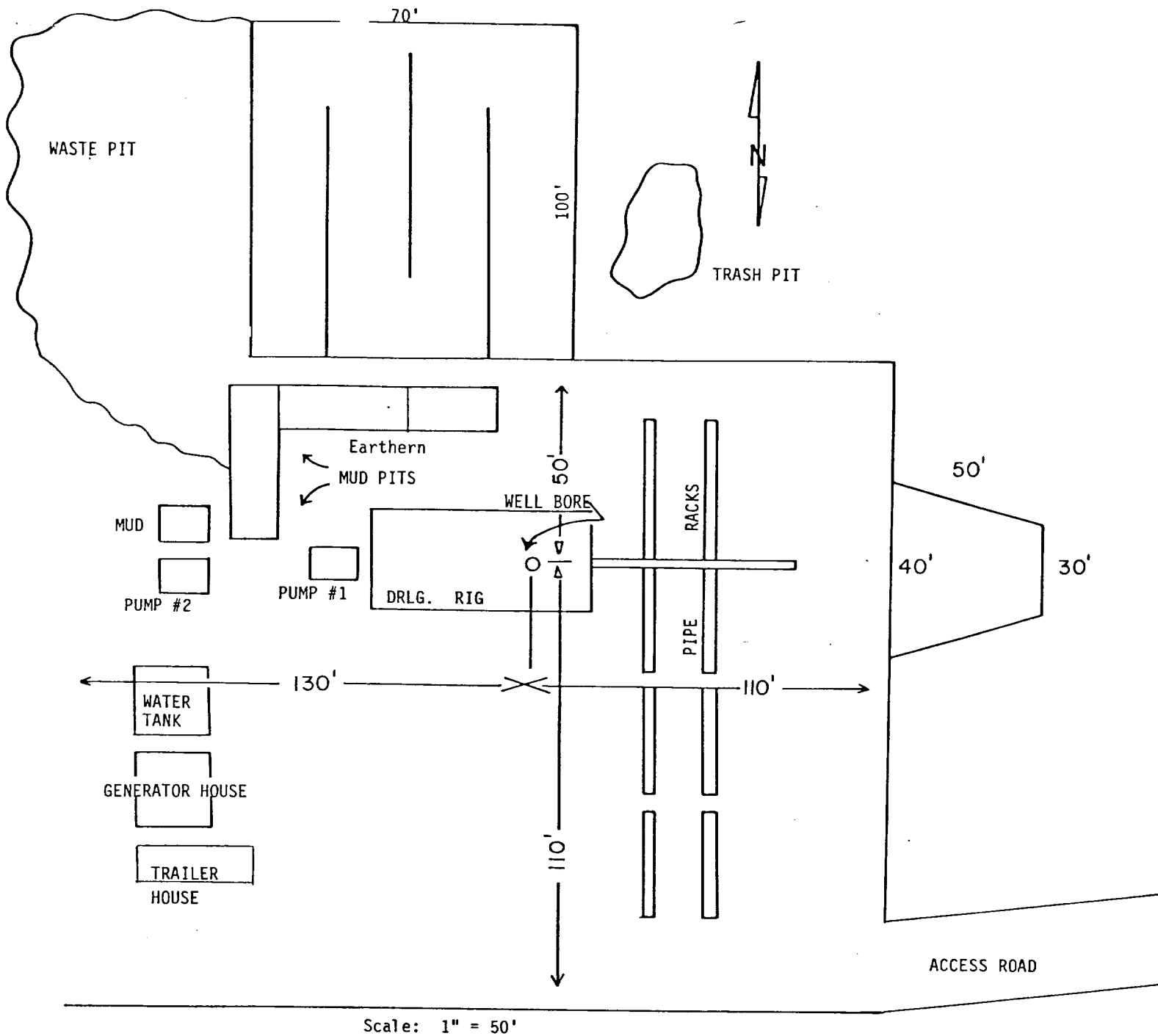


EXHIBIT "D"

J.C. Williamson
HOLLY FEDERAL "A" #3

DRILLING RIG LAYOUT