

NEW MEXICO OIL CONSERVATION COMMISSION  
WELL LOCATION AND ACREAGE DEDICATION PLAT

Form C-102  
Supersedes C-128  
Effective 1-1-65

All distances must be from the outer boundaries of the Section.

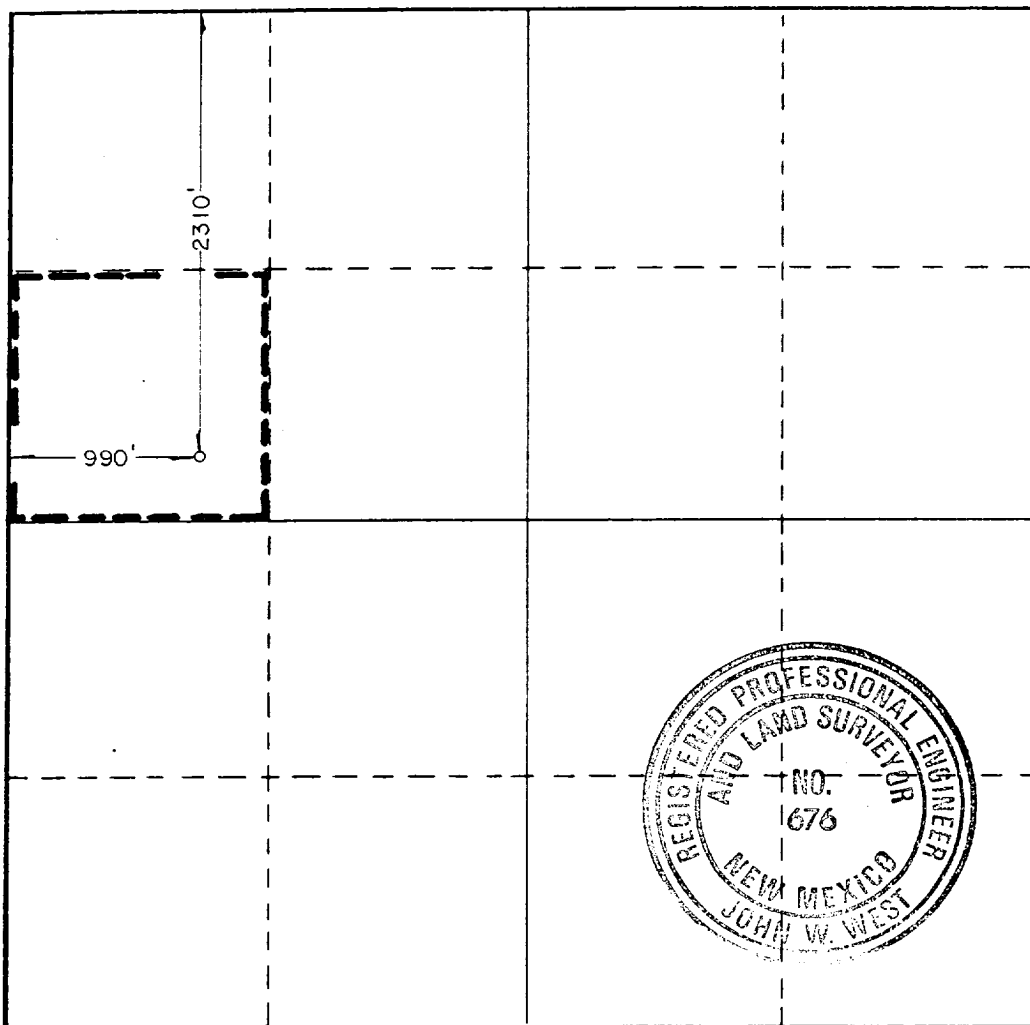
Operator WORTH PETROLEUM COMPANY			Lease GULF FEDERAL		Well No. 2
Unit Letter E	Section 23	Township 26 SOUTH	Range 29 EAST	County EDDY	
Actual Footage Location of Well: 2310 feet from the NORTH line and 990 feet from the WEST line					
Ground Level Elev. 2913.0	Producing Formation DELAWARE		Pool UNDES. BRUSHY DRAW DELAWARE		Dedicated Acreage: 40 Acres

1. Outline the acreage dedicated to the subject well by colored pencil or hachure marks on the plat below.
2. If more than one lease is dedicated to the well, outline each and identify the ownership thereof (both as to working interest and royalty).
3. If more than one lease of different ownership is dedicated to the well, have the interests of all owners been consolidated by communitization, unitization, force-pooling, etc?

☐ Yes ☐ No If answer is "yes," type of consolidation \_\_\_\_\_

If answer is "no," list the owners and tract descriptions which have actually been consolidated. (Use reverse side of this form if necessary.) \_\_\_\_\_

No allowable will be assigned to the well until all interests have been consolidated (by communitization, unitization, forced-pooling, or otherwise) or until a non-standard unit, eliminating such interests, has been approved by the Commission.



CERTIFICATION

I hereby certify that the information contained herein is true and complete to the best of my knowledge and belief.

Name *Arthur R. Brown*  
Arthur R. Brown

Position  
Agent

Company  
WORTH PETROLEUM COMPANY

Date  
AUGUST 23, 1984

I hereby certify that the well location shown on this plat was plotted from field notes of actual surveys made by me or under my supervision, and that the same is true and correct to the best of my knowledge and belief.

Date Surveyed  
MAY 26, 1984

Registered Professional Engineer and/or Land Surveyor

*John W. West*

Certificate No. JOHN W. WEST, 676  
RONALD J. EIDSON, 3239

0 330 660 990 1320 1650 1980 2310 2640 2970 3300 3630 3960 4290 4620 4950 5280 5610 5940 6270 6600