

UNITED STATES  
DEPARTMENT OF THE INTERIOR  
BUREAU OF LAND MANAGEMENT  
O. C. D.  
ARTESIA OFFICE

RECEIVED BY

SUBMIT IN THIS STATE\*

SEP 24 1984

Form approved. 30-015-25021  
Budget Bureau No. 1004-0136  
Expires August 31, 1985

APPLICATION FOR PERMIT TO DRILL, DEEPEN, OR PLUG BACK

1a. TYPE OF WORK

DRILL ☒

DEEPEN ☐

PLUG BACK ☐

b. TYPE OF WELL

OIL WELL ☒

GAS WELL ☐

OTHER

SINGLE ZONE ☐

MULTIPLE ZONE ☐

2. NAME OF OPERATOR

J.C. WILLIAMSON

3. ADDRESS OF OPERATOR

P.O. BOX 16 MIDLAND, TEXAS 79702

4. LOCATION OF WELL (Report location clearly and in accordance with any State requirements.)\*

At surface

660' FSL & 660' FWL

At proposed prod. zone

660' FSL & 660' FWL

14. DISTANCE IN MILES AND DIRECTION FROM NEAREST TOWN OR POST OFFICE\*

14 miles S.E. of Malaga, New Mexico

15. DISTANCE FROM PROPOSED\*

LOCATION TO NEAREST  
PROPERTY OR LEASE LINE, FT.  
(Also to nearest drlg. unit line, if any)

660'

18. DISTANCE FROM PROPOSED LOCATION\*

TO NEAREST WELL, DRILLING, COMPLETED,  
OR APPLIED FOR, ON THIS LEASE, FT.

660'

16. NO. OF ACRES IN LEASE

280

17. NO. OF ACRES ASSIGNED  
TO THIS WELL

40

19. PROPOSED DEPTH

6250'

20. ROTARY OR CABLE TOOLS

ROTARY

21. ELEVATIONS (Show whether DF, RT, GR, etc.)

2889.0 GL

22. APPROX. DATE WORK WILL START\*

August 15, 1984

23.

PROPOSED CASING AND CEMENTING PROGRAM

SIZE OF HOLE	SIZE OF CASING	WEIGHT PER FOOT	SETTING DEPTH	QUANTITY OF CEMENT
17-1/2"	12-3/4"	35#	350'	425sx. CIRCULATE
11"	8-5/8"	24# & 32#	2900'	150sx. tie back to base of salt
7-7/8"	4-1/2"	10.5#	6250'	1450sx. in 2 stages

IN ABOVE SPACE DESCRIBE PROPOSED PROGRAM: If proposal is to deepen or plug back, give data on present productive zone and proposed new productive zone. If proposal is to drill or deepen directionally, give pertinent data on subsurface locations and measured and true vertical depths. Give blowout preventer program, if any.

24.

SIGNED

TITLE Agent

DATE 7-18-84

(This space for Federal or State office use)

PERMIT NO.

APPROVAL DATE

APPROVED BY

TITLE

AREA MANAGER  
CARLSBAD RESOURCE AREA

CONDITIONS OF APPROVAL, IF ANY:

DATE

APPROVAL SUBJECT TO  
GENERAL REQUIREMENTS AND  
SPECIAL STIPULATIONS  
ATTACHED

\*See Instructions On Reverse Side

**N EXICO OIL CONSERVATION COMMISSION  
WELL LOCATION AND ACREAGE DEDICATION PLAT**

Form C-102  
Supersedes C-128  
Effective 1-1-85

All distances must be from the outer boundaries of the Section

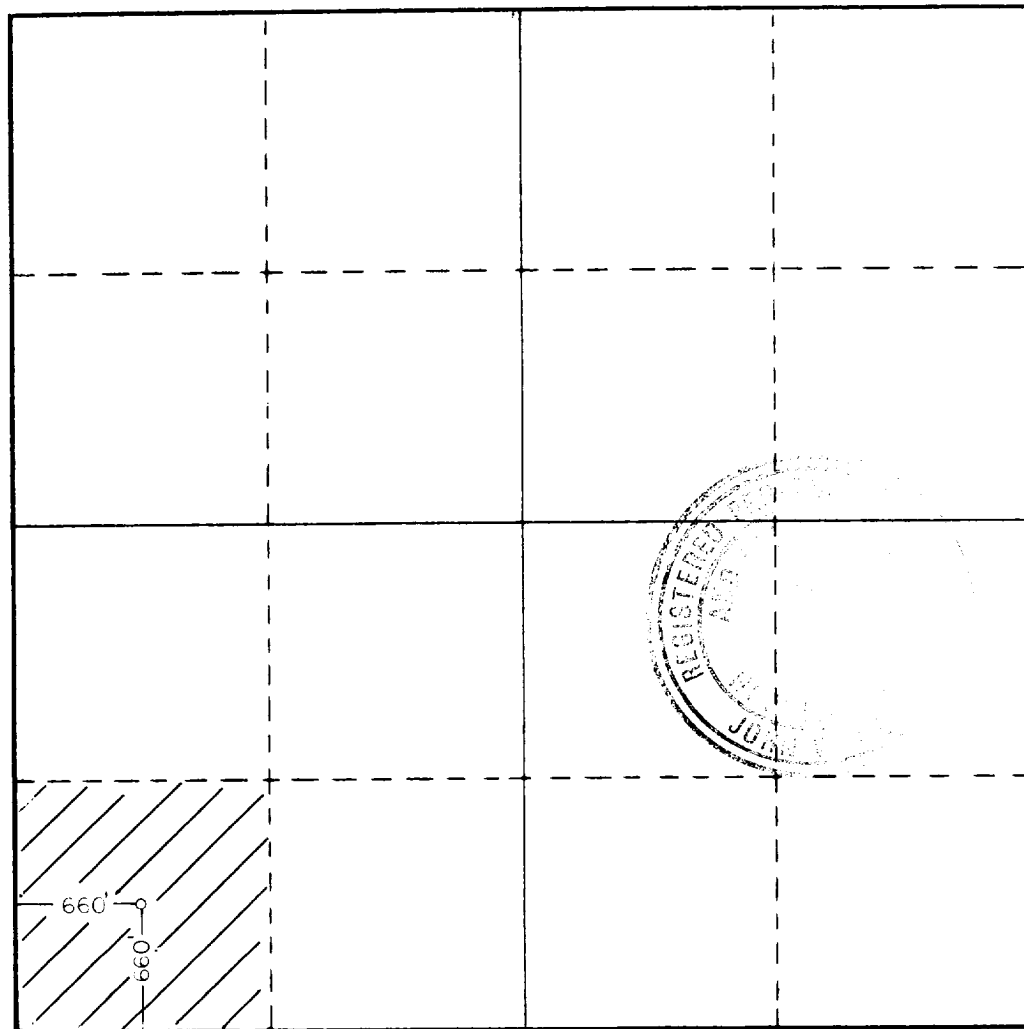
Operator <b>J. C. WILLIAMSON</b>			Lease <b>EPUSA</b>		Well No. <b>6</b>
Unit Letter <b>M</b>	Section <b>26</b>	Township <b>26S</b>	Range <b>29E</b>	County <b>EDDY</b>	
Actual Footage Location of Well: <div style="display: flex; justify-content: space-between;"> <span>660 feet from the <b>WEST</b> line and</span> <span>660 feet from the <b>SOUTH</b> line</span> </div>					
Ground Level Elev. <b>2889.0</b>	Producing Formation <b>Delaware</b>		Pool <b>Brushy Draw Delaware</b>		Dedicated Acreage: <b>40</b> Acres

1. Outline the acreage dedicated to the subject well by colored pencil or hachure marks on the plat below.
2. If more than one lease is dedicated to the well, outline each and identify the ownership thereof (both as to working interest and royalty). **N/A**
3. If more than one lease of different ownership is dedicated to the well, have the interests of all owners been consolidated by communitization, unitization, force-pooling, etc?

☐ Yes ☐ No If answer is "yes," type of consolidation **N/A**

If answer is "no," list the owners and tract descriptions which have actually been consolidated. (Use reverse side of this form if necessary.) **N/A**

No allowable will be assigned to the well until all interests have been consolidated (by communitization, unitization, forced-pooling, or otherwise) or until a non-standard unit, eliminating such interests, has been approved by the Commission.



**CERTIFICATION**

I hereby certify that the information contained herein is true and complete to the best of my knowledge and belief.

Name

**Jan Pfister**

Position

**Agent**

Company

**J.C. Williamson**

Date

**July 18, 1984**

I hereby certify that the well location shown on this plat was plotted from field notes of actual surveys made by me or under my supervision, and that the same is true and correct to the best of my knowledge and belief.

Date Surveyed

**7/12 & 7/14/84**

Registered Professional Engineer  
and/or Land Surveyor

Certificate No. **JOHN W. WEST,**

**676**

**RONALD J. EIDSON,**

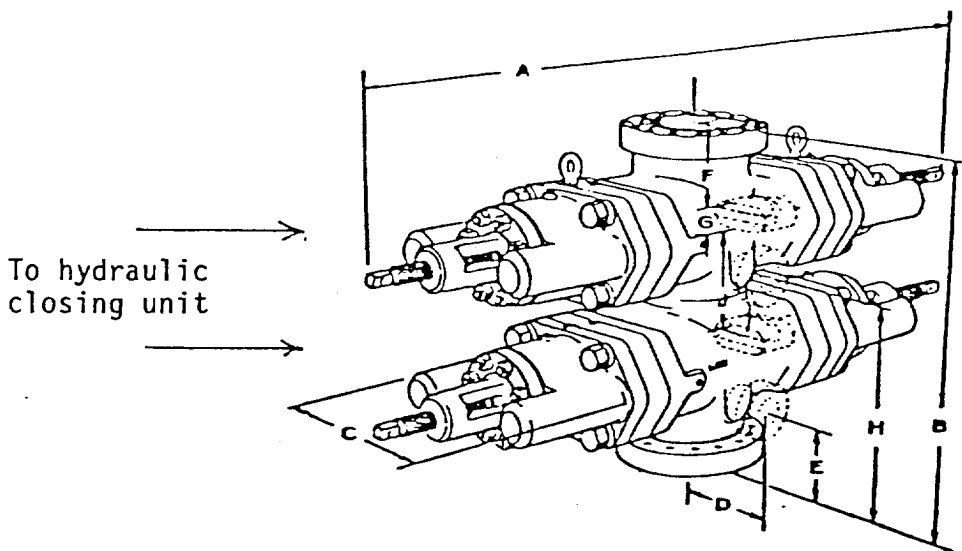
**3239**

0 330 660 990 1320 1650 1980 2310 2640 2000 1500 1000 500 0

## EXHIBIT "E"

### BOP Diagram

After 12-3/4 surface casing has been set and cement circulated to the surface, an 11" double ram BOP, as shown below will be put on the hole. This blowout preventer will be connected to a hydraulically controlled closing unit. The pressure rating on this BOP is 3000#, and will have blank and 4-1/2" pipe rams.



J.C. Williamson  
EP-USA WELL #6

## SUPPLEMENTAL DRILLING DATA

J. C. WILLIAMSON  
WELL EP-USA #6

1. SURFACE FORMATION: Quaternary Alluvium

2. ESTIMATED TOPS OF GEOLOGIC MARKERS:

Rustler Anhydrite	300'
Lamar Shale	3000'
Ramsey Sand	3025'
Olds Sand	3025'
Top Cherry Canyon	4150'
Top Brushy Canyon	5100'

3. ANTICIPATED POSSIBLE WATER AND HYDROCARBON BEARING ZONES:

Fresh Water	above 100'
Delaware (oil)	3025'
Brushy Canyon (oil)	5100' - 5150' - 5600' - 5650'
Lower Brushy Canyon (oil)	6150' - 6200'

4. PROPOSED CASING AND CEMENTING PROGRAM:

Casing program is shown on Form 9-331 C.

Hole for surface casing will be drilled to a depth below fresh water zones. Surface casing will be run to bottom and cemented to protect fresh water zones. 12-3/4" pipe will be run and cemented at 350 feet.

8-5/8" pipe will be run and cemented at 2900 feet, prior to entering delaware section.

12-3/4" surface casing will be cemented to the surface with 425 sacks of Class "C" cement.

8-5/8" protection casing will be cemented with 150 sacks of Class "C" cement at 2900', which is sufficient to bring cement well above the base of the salt.

4-1/2" production casing will be cemented at a total depth or shallower if significant shows are encountered in the Brushy Canyon formation, with 1350 sacks Class "C" cement, 50-50 poz in 2 stages with DV tool set at 4600 feet.

5. PRESSURE CONTROL EQUIPMENT:

Pressure control equipment will consist of a double ram hydraulically controlled blow out preventer, together with a 3000# choke manifold.

6. CIRCULATING MEDIUM:

The circulating medium will be fresh water down to 350 feet and brine water in the rest of the hole.

JAL ORLA  
HIGHWAY

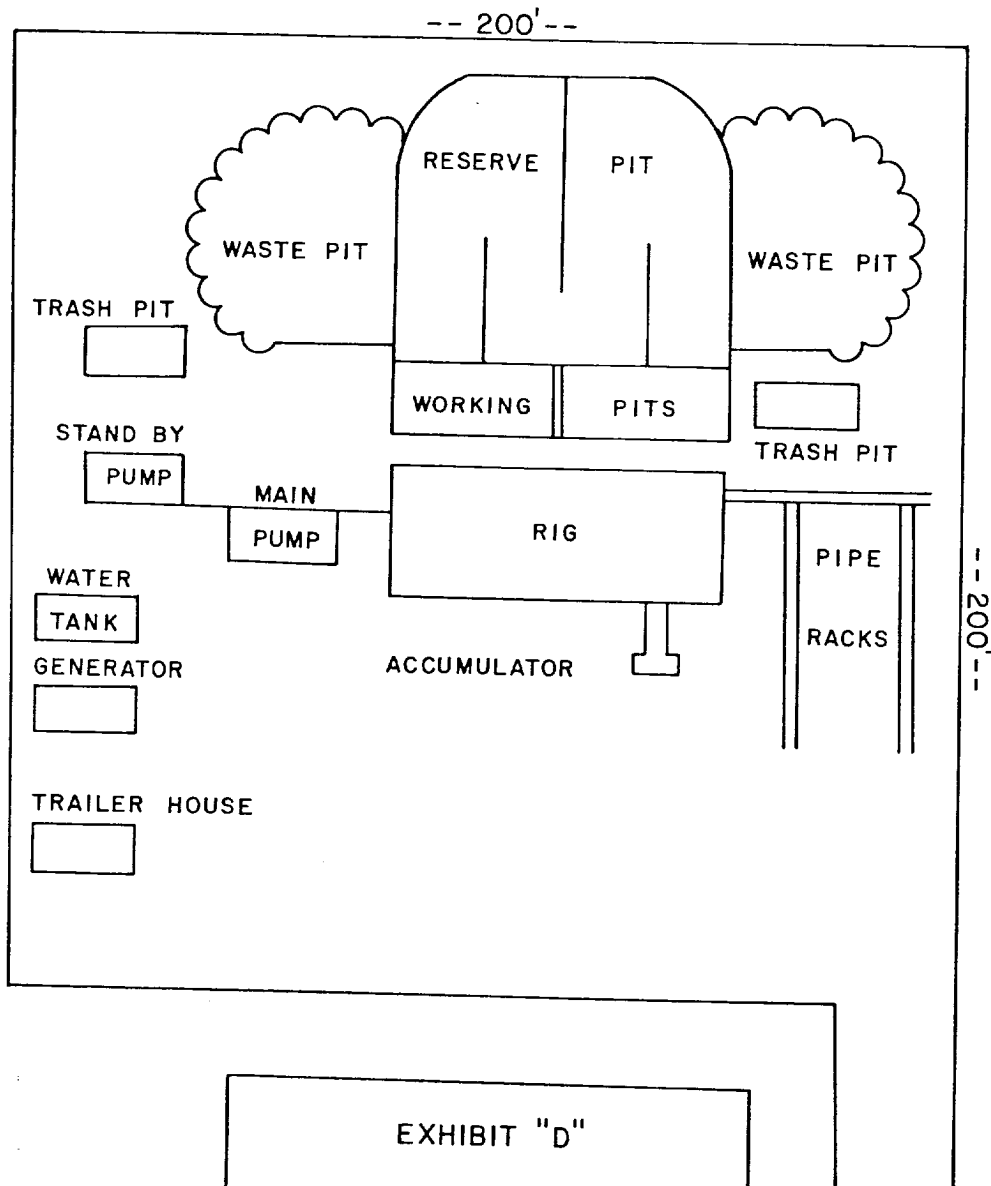
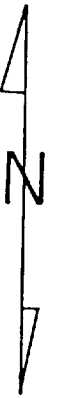


EXHIBIT "D"

J.C. Williamson  
EP-USA WELL #6