

Artesia, NM

UNITED STATES
DEPARTMENT OF THE INTERIOR
BUREAU OF LAND MANAGEMENT

RECEIVED BY

SUBMIT IN

DATE

SEP 24 1984

O. C. D.

ARTESIA, OFFICE

Form approved. 20-015-25024
Budget Bureau No. 1004-0136
Expires August 31, 1985

APPLICATION FOR PERMIT TO DRILL, DEEPEN, OR PLUG BACK

1a. TYPE OF WORK

DRILL ☒

DEEPEN ☐

PLUG BACK ☐

b. TYPE OF WELL

OIL
WELL ☒

GAS
WELL ☐

OTHER

SINGLE
ZONE ☐

MULTIPLE
ZONE ☒

2. NAME OF OPERATOR

J.C. Williamson

3. ADDRESS OF OPERATOR

P.O. Box 16 Midland, Texas 79702

4. LOCATION OF WELL (Report location clearly and in accordance with any State requirements.)*

At surface

1650' FSL & 990' FWL

At proposed prod. zone

1650' FSL & 990' FWL

14. DISTANCE IN MILES AND DIRECTION FROM NEAREST TOWN OR POST OFFICE*

14 miles SE of Malaga, New Mexico

15. DISTANCE FROM PROPOSED*

LOCATION TO NEAREST
PROPERTY OR LEASE LINE, FT.

(Also to nearest drlg. unit line, if any)

990'

16. NO. OF ACRES IN LEASE

315

17. NO. OF ACRES ASSIGNED

TO THIS WELL

40

18. DISTANCE FROM PROPOSED LOCATION*

TO NEAREST WELL, DRILLING, COMPLETED,
OR APPLIED FOR, ON THIS LEASE, FT.

990'

19. PROPOSED DEPTH

6250'

20. ROTARY OR CABLE TOOLS

Rotary

21. ELEVATIONS (Show whether DF, RT, GR, etc.)

2874.9 GR

22. APPROX. DATE WORK WILL START*

September 15, 1984

23. PROPOSED CASING AND CEMENTING PROGRAM

SIZE OF HOLE	SIZE OF CASING	WEIGHT PER FOOT	SETTING DEPTH	QUANTITY OF CEMENT
17-1/2"	12-3/4"	35#	350'	425 sx (sufficient to circulate)
11"	8-5/8"	24# & 32#	2900'	150 sx tie back to base of salt
7-7/8"	4-1/2"	10.5#	6250'	1450 sx in 2 stages

IN ABOVE SPACE DESCRIBE PROPOSED PROGRAM: If proposal is to deepen or plug back, give data on present productive zone and proposed new productive zone. If proposal is to drill or deepen directionally, give pertinent data on subsurface locations and measured and true vertical depths. Give blowout preventer program, if any.

24.

SIGNED

[Signature]

TITLE Agent

DATE August 22, 1984

(This space for Federal or State office use)

PERMIT NO.

APPROVAL DATE

APPROVED BY

TITLE

DATE

APPROVAL SUBJECT TO
GENERAL REQUIREMENTS AND
SPECIAL STIPULATIONS

*See Instructions On Reverse Side

EXICO OIL CONSERVATION COMMISS
WELL LOCATION AND ACREAGE DEDICATION PLAT

Form C-102
Supersedes C-128
Effective 1-1-65

All distances must be from the outer boundaries of the Section.

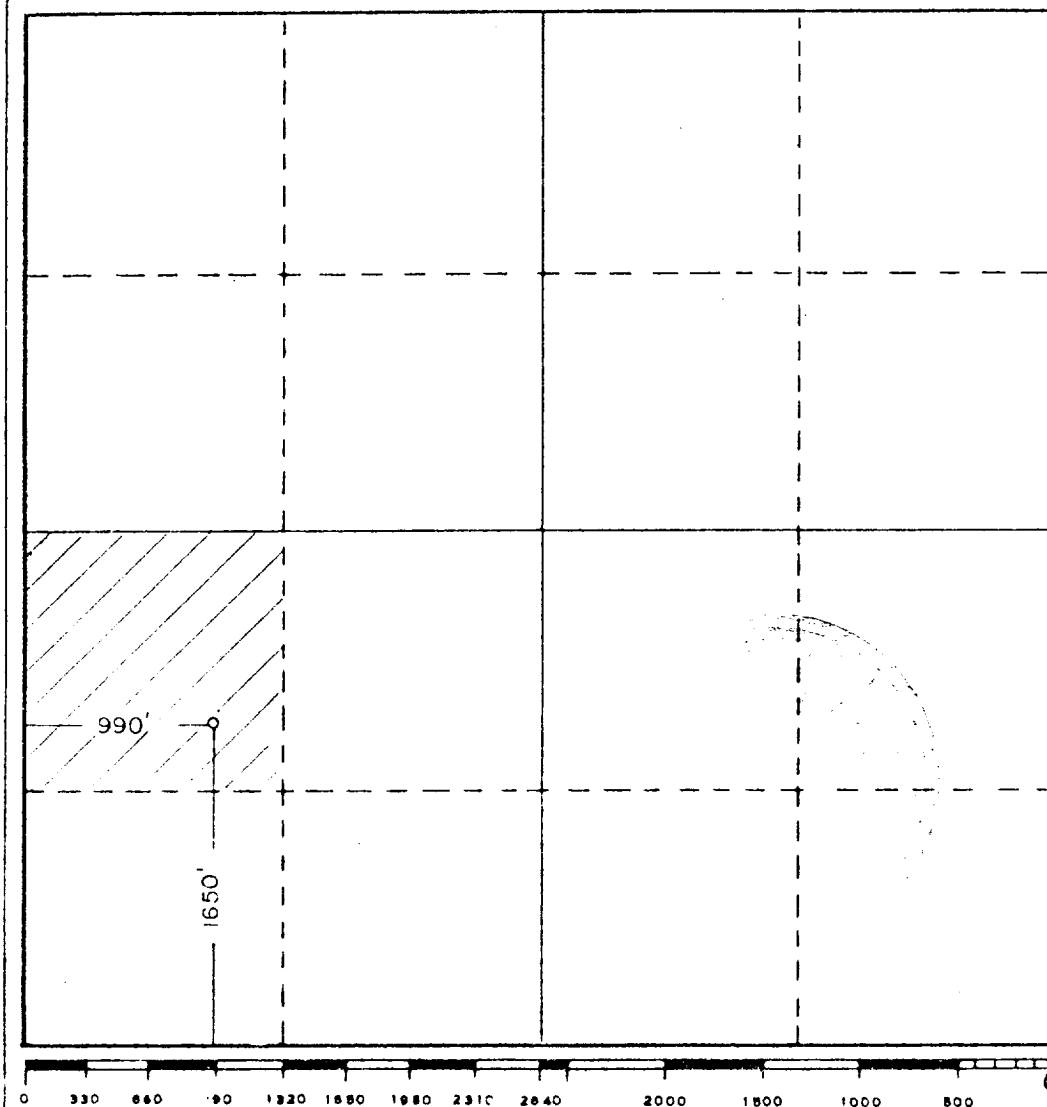
Operator J. C. WILLIAMSON			Lease EPUSA		Well No. 9
Unit Letter L	Section 26	Township 26S	Range 29E	County EDDY	
Actual Footage Location of Well: 1650 feet from the SOUTH line and 990 feet from the WEST line					
Ground Level Elev. 2874.9	Producing Formation Delaware		Pool Brushy Draw Delaware		Dedicated Acreage: 40 Acres

1. Outline the acreage dedicated to the subject well by colored pencil or hachure marks on the plat below.
2. If more than one lease is dedicated to the well, outline each and identify the ownership thereof (both as to working interest and royalty). **N/A**
3. If more than one lease of different ownership is dedicated to the well, have the interests of all owners been consolidated by communitization, unitization, force-pooling, etc?

☐ Yes ☐ No If answer is "yes," type of consolidation **N/A**

If answer is "no," list the owners and tract descriptions which have actually been consolidated. (Use reverse side of this form if necessary.) **N/A**

No allowable will be assigned to the well until all interests have been consolidated (by communitization, unitization, forced-pooling, or otherwise) or until a non-standard unit, eliminating such interests, has been approved by the Commission.



CERTIFICATION

I hereby certify that the information contained herein is true and complete to the best of my knowledge and belief.

Name *Jan Pfister*

Jan Pfister

Position

Agent

Company

J.C. Williamson

Date

August 22, 1984

I hereby certify that the well location shown on this plat was plotted from field notes of actual surveys made by me or under my supervision, and that the same is true and correct to the best of my knowledge and belief.

Date Surveyed

8/6/84

Registered Professional Engineer and/or Land Surveyor

John W. West

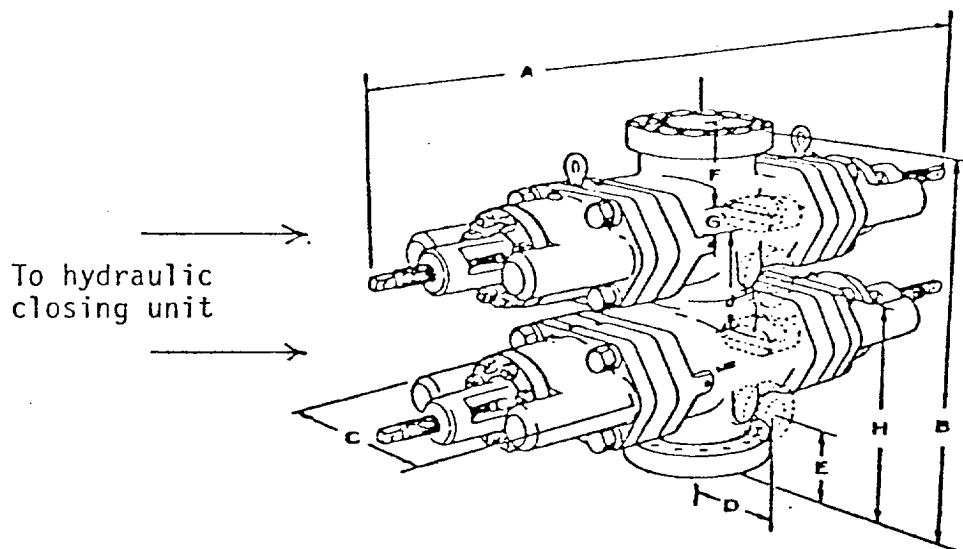
Certificate No. **JOHN W. WEST, 676**

RONALD J. EIDSON, 3239

EXHIBIT "E"

BOP Diagram

After 12-3/4 surface casing has been set and cement circulated to the surface, an 11" double ram BOP, as shown below will be put on the hole. This blowout preventer will be connected to a hydraulically controlled closing unit. The pressure rating on this BOP is 3000#, and will have blank and 4-1/2" pipe rams.



J.C. Williamson
EP-USA #9

SUPPLEMENTAL DRILLING DATA

J. C. WILLIAMSON
WELL EP-USA #9

1. SURFACE FORMATION: Quaternary Alluvium

2. ESTIMATED TOPS OF GEOLOGIC MARKERS:

Rustler Anhydrite	300'
Lamar Shale	3000'
Ramsey Sand	3025'
Olds Sand	3025'
Top Cherry Canyon	4150'
Top Brushy Canyon	5100'

3. ANTICIPATED POSSIBLE WATER AND HYDROCARBON BEARING ZONES:

Fresh Water	above 100'
Delaware (oil)	3025'
Brushy Canyon (oil)	5100' - 5150' - 5600' - 5650'
Lower Brushy Canyon (oil)	6150' - 6200'

4. PROPOSED CASING AND CEMENTING PROGRAM:

Casing program is shown on Form 9-331 C.

Hole for surface casing will be drilled to a depth below fresh water zones. Surface casing will be run to bottom and cemented to protect fresh water zones. 12-3/4" pipe will be run and cemented at 350 feet.

8-5/8" pipe will be run and cemented at 2900 feet, prior to entering delaware section.

12-3/4" surface casing will be cemented to the surface with 425 sacks of Class "C" cement, which is sufficient to circulate cement to the surface.

8-5/8" protection casing will be cemented with 150 sacks of Class "C" cement at 2900', which is sufficient to bring cement well above the base of the salt.

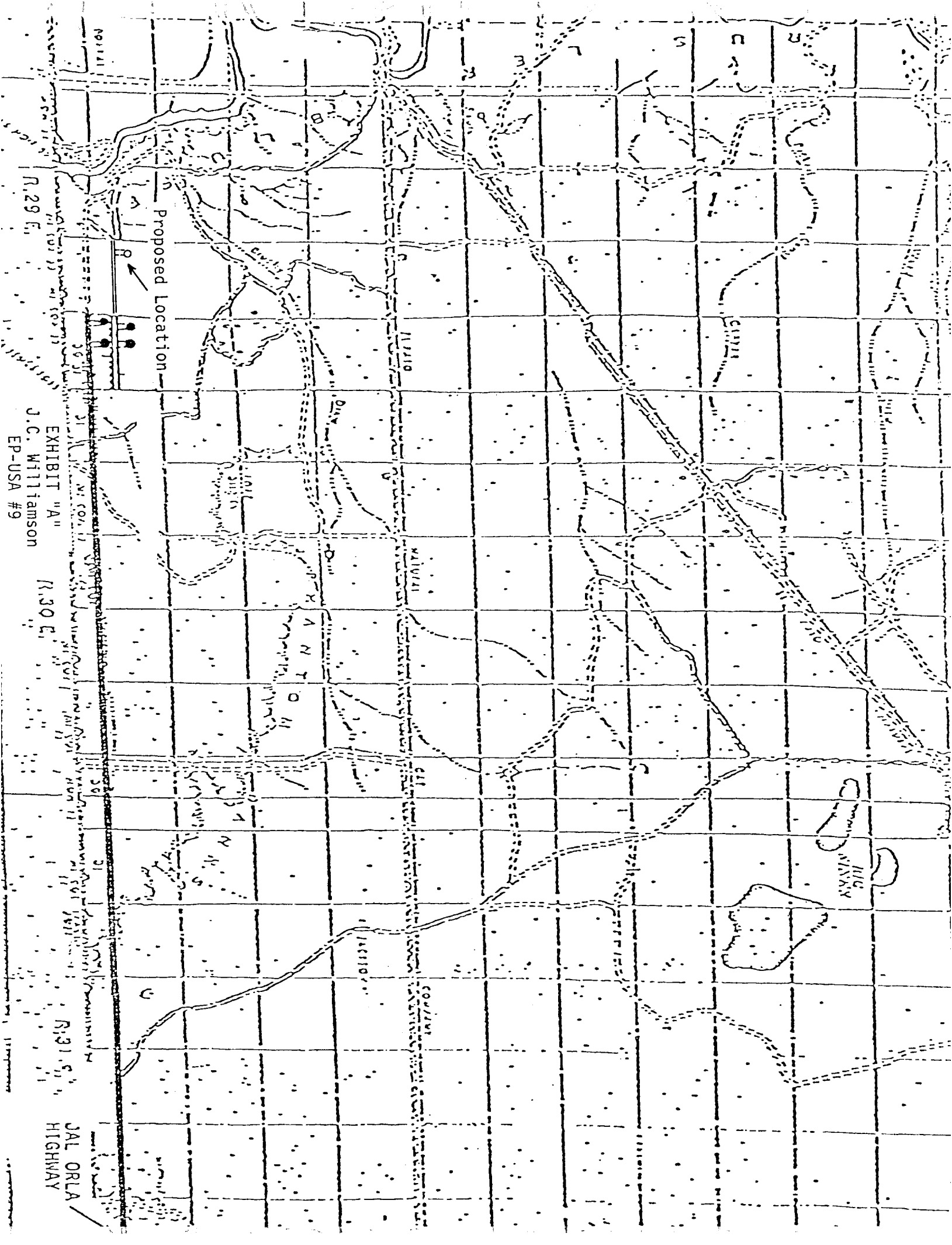
4-1/2" production casing will be cemented at a total depth or shallower if significant shows are encountered in the Brushy Canyon formation, with 1450 sacks Class "C" cement, 50-50 poz in 2 stages with DV tool set at 4600 feet.

5. PRESSURE CONTROL EQUIPMENT:

Pressure control equipment will consist of a double ram hydraulically controlled blow out preventer, together with a 3000# choke manifold.

6. CIRCULATING MEDIUM:

The circulating medium will be fresh water down to 350 feet and brine water in the rest of the hole, once the salt section is encountered out from under the surface pipe.



Proposed Location

EXHIBIT "A"

J.C. Williamson

EP-USA #9

R.30 E.

R.29 E.

R.31 E.

JAL ORLA
HIGHWAY

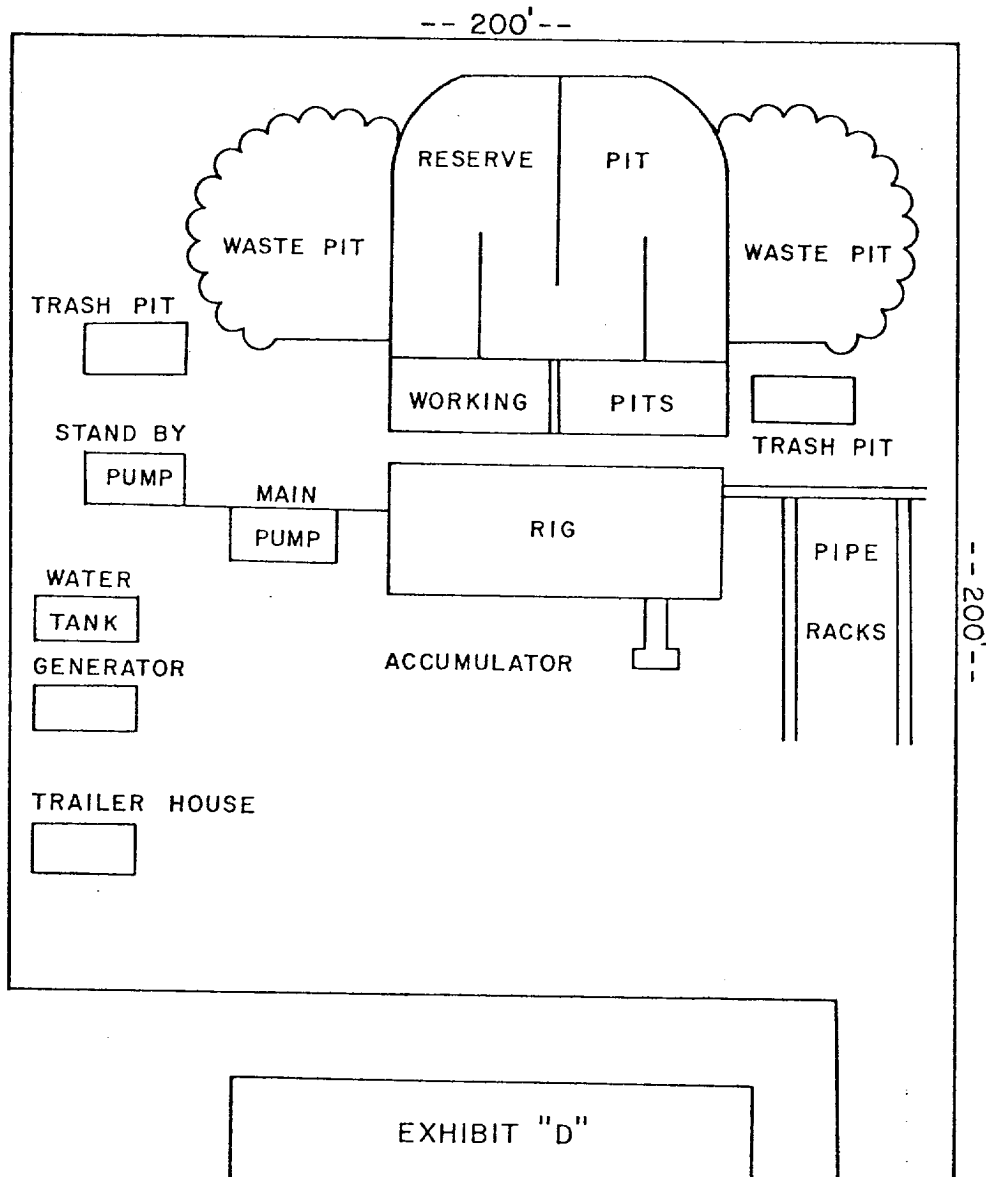
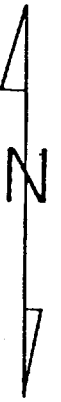


EXHIBIT "D"

J.C. Williamson
EP-USA Well #9
Eddy County, New Mexico