

RECEIVED BY
SUBMIT IN TRIPLICATE
NOV 29 1984

Form approved.
Budget Bureau No. 1004-0136
Expires August 31, 1985

UNITED STATES
DEPARTMENT OF THE INTERIOR
BUREAU OF LAND MANAGEMENT

APPLICATION FOR PERMIT TO DRILL, DEEPEN, OR PLUG BACK

1a. TYPE OF WORK ☒ DRILL ☐ DEEPEN ☐ PLUG BACK ☐

b. TYPE OF WELL ☒ OIL WELL ☐ GAS WELL ☐ OTHER

2. NAME OF OPERATOR N.M. WORTH PETROLEUM COMPANY

3. ADDRESS OF OPERATOR P. O. BOX 17406, FORT WORTH, TEXAS 76102

4. LOCATION OF WELL (Report location clearly and in accordance with any State requirements.)
At surface 330' FNL AND 2310' FWL OF SECTION 27
At proposed prod. zone

14. DISTANCE IN MILES AND DIRECTION FROM NEAREST TOWN OR POST OFFICE*
16 AIR MILES SOUTH-SOUTHEAST OF MALAGA, NEW MEXICO

15. DISTANCE FROM PROPOSED* LOCATION TO NEAREST PROPERTY OR LEASE LINE, FT. (Also to nearest drlg. unit line, if any) 330'

16. NO. OF ACRES IN LEASE 1318.02

17. NO. OF ACRES ASSIGNED TO THIS WELL 40

18. DISTANCE FROM PROPOSED LOCATION* TO NEAREST WELL, DRILLING, COMPLETED, OR APPLIED FOR, ON THIS LEASE, FT. 1450'

19. PROPOSED DEPTH 5200'

20. ROTARY OR CABLE TOOLS ROTARY

21. ELEVATIONS (Show whether DF, RT, GR, etc.) 2885.5 GL

22. APPROX. DATE WORK WILL START* UPON APPROVAL

23. PROPOSED CASING AND CEMENTING PROGRAM				
SIZE OF HOLE	SIZE OF CASING	WEIGHT PER FOOT	SETTING DEPTH	QUANTITY OF CEMENT
11"	8-5/8"	24#	450'	SUFFICIENT TO CIRCULATE
7-7/8"	5-1/2"	14#	5200'	300 SACKS

PRODUCING ZONE WILL BE PERFORATED AND STIMULATED AS NECESSARY.

SEE ATTACHED FOR: SUPPLEMENTAL DRILLING DATA
BOP SKETCH
SURFACE USE AND OPERATIONS PLAN

IN ABOVE SPACE DESCRIBE PROPOSED PROGRAM: If proposal is to deepen or plug back, give data on present productive zone and proposed new productive zone. If proposal is to drill or deepen directionally, give pertinent data on subsurface locations and measured and true vertical depths. Give blowout preventer program, if any.

24. SIGNED Arthur R. Brown TITLE Agent DATE 10-29-84
(This space for Federal or State office use)

PERMIT NO. _____ APPROVAL DATE _____
APPROVED BY: _____ TITLE _____
CONDITIONS OF APPROVAL, IF ANY:

DATE 11-28-84
APPROVAL SUBJECT TO
GENERAL REQUIREMENTS AND
SPECIAL STIPULATIONS
ATTACHED

*See Instructions On Reverse Side

NEW MEXICO OIL CONSERVATION COMMISSION
WELL LOCATION AND ACREAGE DEDICATION PLAT

Form C-102
Supersedes C-128
Effective 1-1-65

All distances must be from the outer boundaries of the Section.

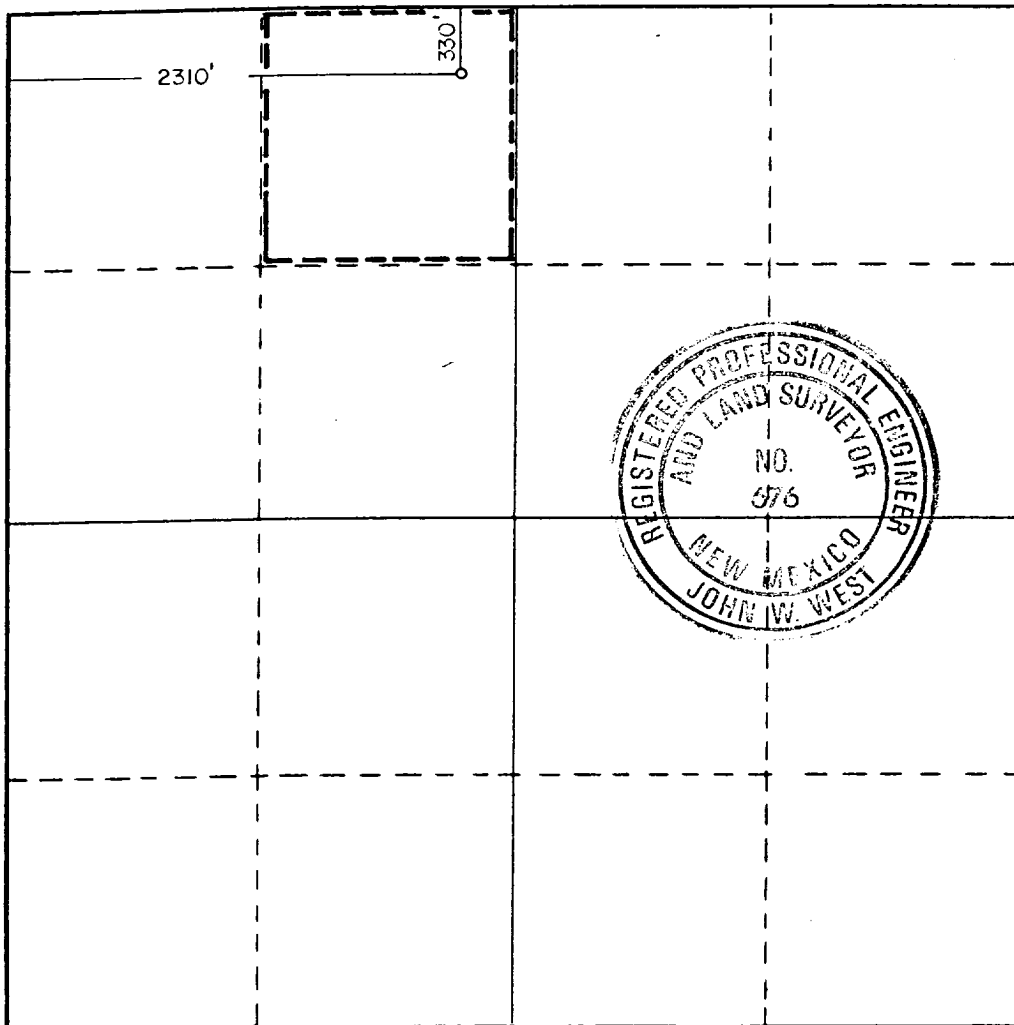
Operator WORTH PETROLEUM COMPANY			Lease AMOCO FED.		Well No. 7
Unit Letter C	Section 27	Township 26S	Range 29E	County EDDY	
Actual Footage Location of Well: 330 feet from the NORTH line and 2310 feet from the WEST line					
Ground Level Elev. 2885.5	Producing Formation DELAWARE		Pool UNDES. BRUSHY DRAW DELAWARE		Dedicated Acreage: 40 Acres

1. Outline the acreage dedicated to the subject well by colored pencil or hachure marks on the plat below.
2. If more than one lease is dedicated to the well, outline each and identify the ownership thereof (both as to working interest and royalty).
3. If more than one lease of different ownership is dedicated to the well, have the interests of all owners been consolidated by communitization, unitization, force-pooling, etc?

☐ Yes ☐ No If answer is "yes," type of consolidation _____

If answer is "no," list the owners and tract descriptions which have actually been consolidated. (Use reverse side of this form if necessary.) _____

No allowable will be assigned to the well until all interests have been consolidated (by communitization, unitization, forced-pooling, or otherwise) or until a non-standard unit, eliminating such interests, has been approved by the Commission.



CERTIFICATION

I hereby certify that the information contained herein is true and complete to the best of my knowledge and belief.

Name *Arthur R. Brown*
Arthur R. Brown

Position
Agent

Company
WORTH PETROLEUM COMPANY

Date
OCTOBER 29, 1984

I hereby certify that the well location shown on this plat was plotted from field notes of actual surveys made by me or under my supervision, and that the same is true and correct to the best of my knowledge and belief.

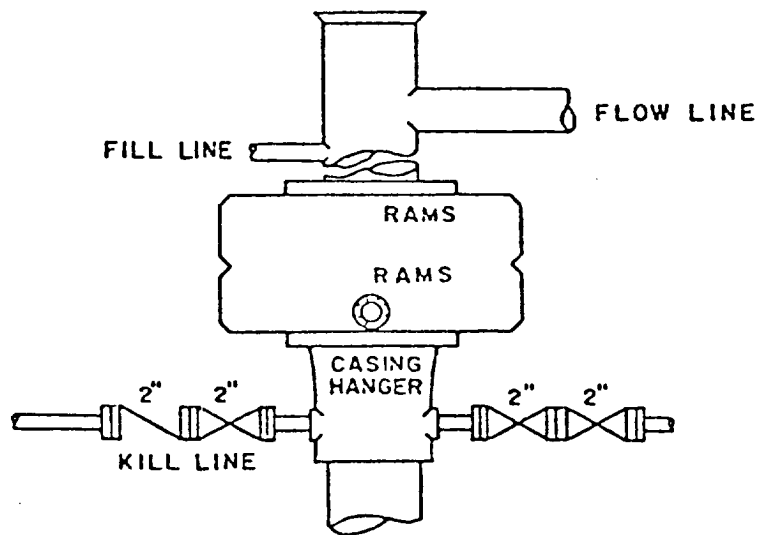
Date Surveyed
10/17/84

Registered Professional Engineer
and/or Land Surveyor

John W. West
Certificate No. JOHN W. WEST, 676

RONALD J. EIDSON, 3239

0 330 660 990 1320 1650 1980 2310 2640 2000 1500 1000 500



BOP STACK

3000 PSI WORKING PRESSURE

BOP ARRANGEMENT

SUPPLEMENTAL DRILLING DATA

WORTH PETROLEUM COMPANY

WELL NO.7 AMOCO FEDERAL

1. SURFACE FORMATION: Quaternary.

2. ESTIMATED TOPS OF GEOLOGIC MARKERS:

Rustler Anhydrite	300'
Bell Canyon	2936'
Cherry Canyon	4026'

3. ANTICIPATED POSSIBLE HYDROCARBON BEARING ZONES:

Cherry Canyon	Oil
---------------	-----

4. PROPOSED CASING AND CEMENTING PROGRAM:

<u>CASING SIZE</u>	<u>SETTING DEPTH</u>		<u>WEIGHT</u>	<u>GRADE</u>	<u>JOINT</u>
	<u>FROM</u>	<u>TO</u>			
8-5/8"	0	450'	24#	K-55	STC
5-1/2"	0	5200'	14#	K-55	STC

8-5/8" casing will be cemented with approximately 250 sacks of Class "C" cement. Cement to circulate.

5-1/2" casing will be cemented with approximately 300 sacks of cement.

Equivalent or adequate grades and weights of casing may be substituted at time casing is run, depending on availability.

5. PRESSURE CONTROL EQUIPMENT:

A 3000 psi working pressure, double ram type preventer will be in use while drilling below the surface casing.

A BOP sketch is attached.

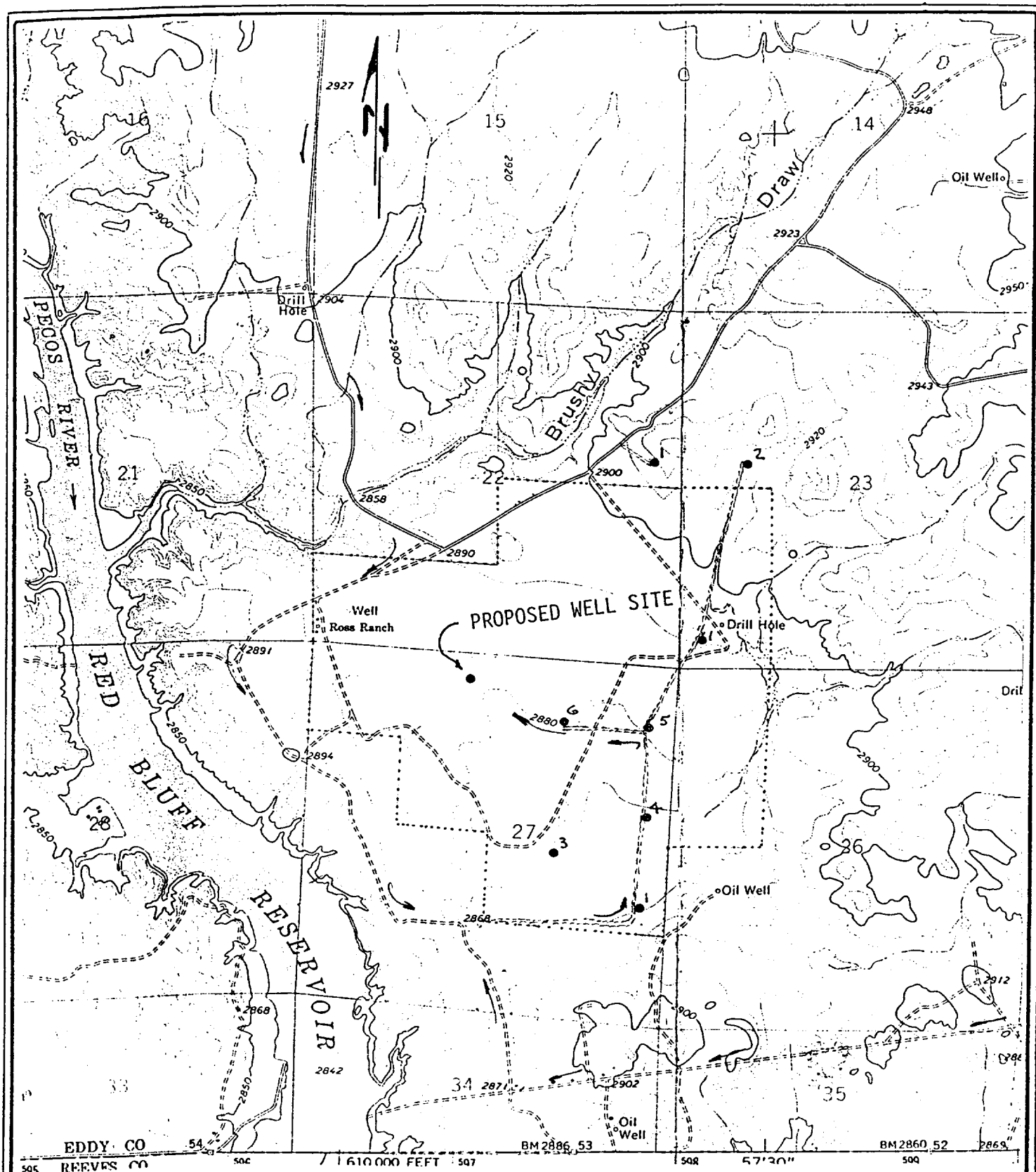


EXHIBIT "D"

WORTH PETROLEUM COMPANY
 WELL NO.7 AMOCO FEDERAL
 330'FNL & 2310'FWL SEC.27, T.26 S., R.29 E.
 EDDY COUNTY, N.M.

TOPO PLAT

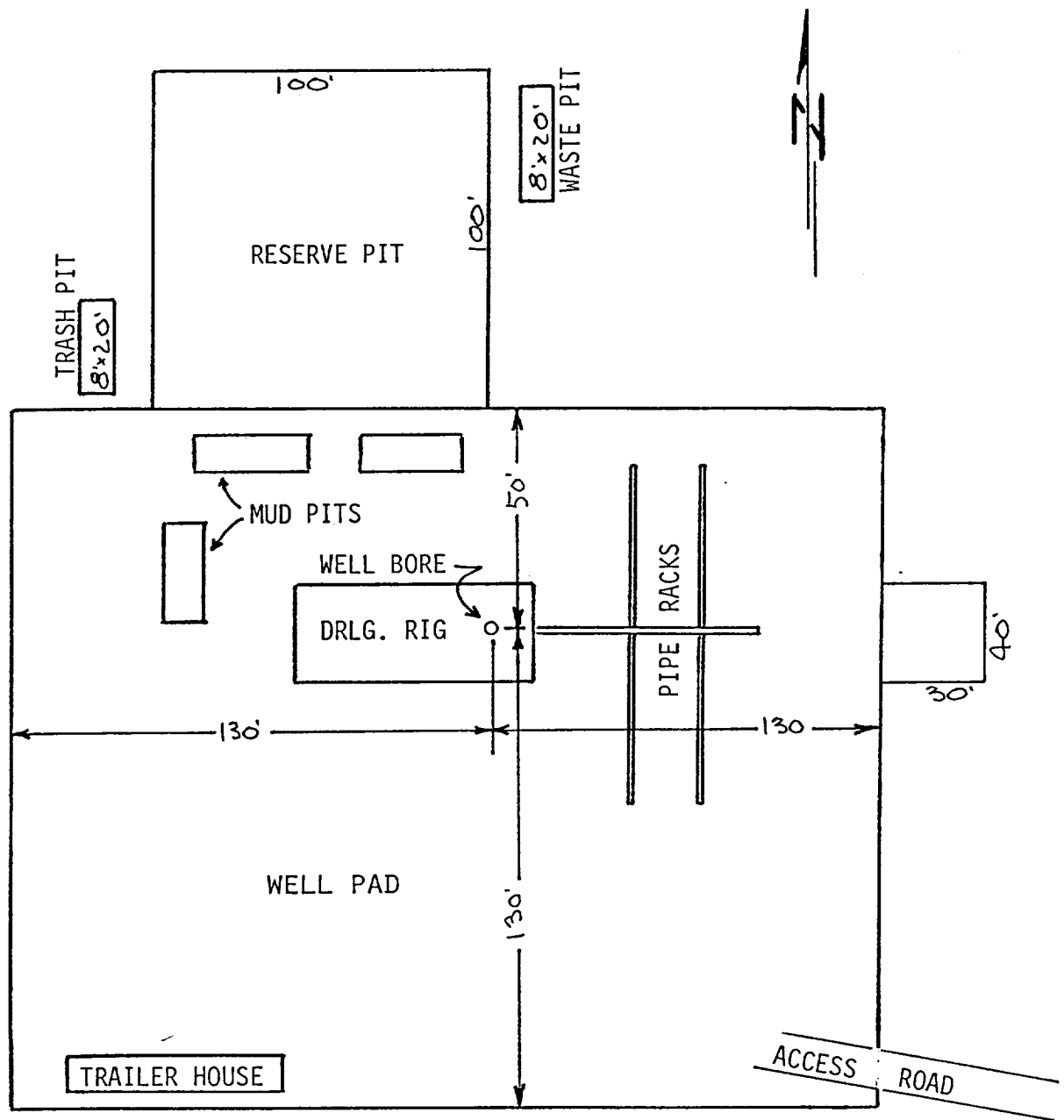


EXHIBIT "C"

WORTH PETROLEUM COMPANY
WELL NO.7 AMOCO FEDERAL

DRILLING RIG LAYOUT
SCALE: None