

RECEIVED BY  
(November 1983)  
(formerly 9-331C)  
DEC 19 1984

Draper DD  
Artesia, NM 88210

SUBMIT IN 7 LICATE\*  
(Other instructions on  
reverse side)

Form approved.  
Budget Bureau No. 1004-0136  
Expires August 31, 1985

c/sr

30-815-25194

UNITED STATES  
DEPARTMENT OF THE INTERIOR  
BUREAU OF LAND MANAGEMENT

O.C.D.  
ARTESIA OFFICE  
APPLICATION FOR PERMIT TO DRILL, DEEPEN, OR PLUG BACK

1. TYPE OF WORK  
DRILL ☒ DEEPEN ☐ PLUG BACK ☐

2. TYPE OF WELL  
OIL WELL ☒ GAS WELL ☐ OTHER ☐ SINGLE ZONE ☒ MULTIPLE ZONE ☐

3. NAME OF OPERATOR  
PENTA EXPLORATION COMPANY (Mr. Rick Bell)  
(915-687-0143)

4. ADDRESS OF OPERATOR  
310 W. Texas (Suite 210) Midland, Texas 79701

5. LOCATION OF WELL (Report location clearly and in accordance with any State requirements\*)  
At surface 700' FSL & 2205' FEL of Section  
At proposed prod. zone (Unit 0)  
same (SW 1/4 SE 1/4)

6. DISTANCE IN MILES AND DIRECTION FROM NEAREST TOWN OR POST OFFICE\*  
30 air miles south-southeast of Carlsbad, New Mexico

7. DISTANCE FROM PROPOSED\*  
LOCATION TO NEAREST  
PROPERTY OR LEASE LINE, FT.  
(Also to nearest drlg. unit line, if any) 700'  
(330')

8. DISTANCE FROM PROPOSED LOCATION\*  
TO NEAREST WELL, DRILLING, COMPLETED,  
OR APPLIED FOR, ON THIS LEASE, FT. 885'

9. ELEVATIONS (Show whether DF, RT, GR, etc.)  
2989' G.L.

10. FIELD AND POOL, OR WILDCAT (Undes.)  
Brushy Draw Delaware

11. SEC., T., R., M., OR BLK.  
AND SURVEY OR AREA  
Sec. 13-26S-29E

12. COUNTY OR PARISH  
Eddy

13. STATE  
NM

14. NO. OF ACRES IN LEASE  
640

15. NO. OF ACRES ASSIGNED  
TO THIS WELL  
40

16. ROTARY OR CABLE TOOLS  
Rotary

17. APPROX. DATE WORK WILL START\*  
December 26, 1984

PROPOSED CASING AND CEMENTING PROGRAM

SIZE OF HOLE	SIZE OF CASING	WEIGHT PER FOOT	SETTING DEPTH	QUANTITY OF CEMENT
17 1/2"	13 3/8"	48.0#	400'	Sufficient to circulate
11 "	8 5/8"	24 & 32#	3150'	Circulate back into Salt Section
7 7/8"	4 1/2"	10.5#	6500'	Circulate back into 8 5/8" Csg.

Pay zone will be selectively perforated and stimulated as needed for optimum production.

Attached are: 1. Well Location & Acreage Dedication Plat  
2. Supplemental Drilling Data  
3. Surface Use Plan

IN ABOVE SPACE DESCRIBE PROPOSED PROGRAM: If proposal is to deepen or plug back, give data on present productive zone and proposed new productive zone. If proposal is to drill or deepen directionally, give pertinent data on subsurface locations and measured and true vertical depths. Give blowout preventer program, if any.

24. SIGNED James A. Knauf TITLE Agent DATE December 10, 1984  
(This space for Federal or State office use)

PERMIT NO.                      APPROVAL DATE                       
APPROVED BY San Woody TITLE                      DATE 12-19-84  
CONDITIONS OF APPROVAL, IF ANY:                     

APPROVAL SUBJECT TO  
GENERAL REQUIREMENTS AND  
SPECIAL STIPULATIONS

\*See Instructions On Reverse Side

W MEXICO OIL CONSERVATION COMMISSION  
WELL LOCATION AND ACREAGE DEDICATION PLAT

Form C-102  
Supersedes C-128  
Effective 1-1-65

All distances must be from the outer boundaries of the Section

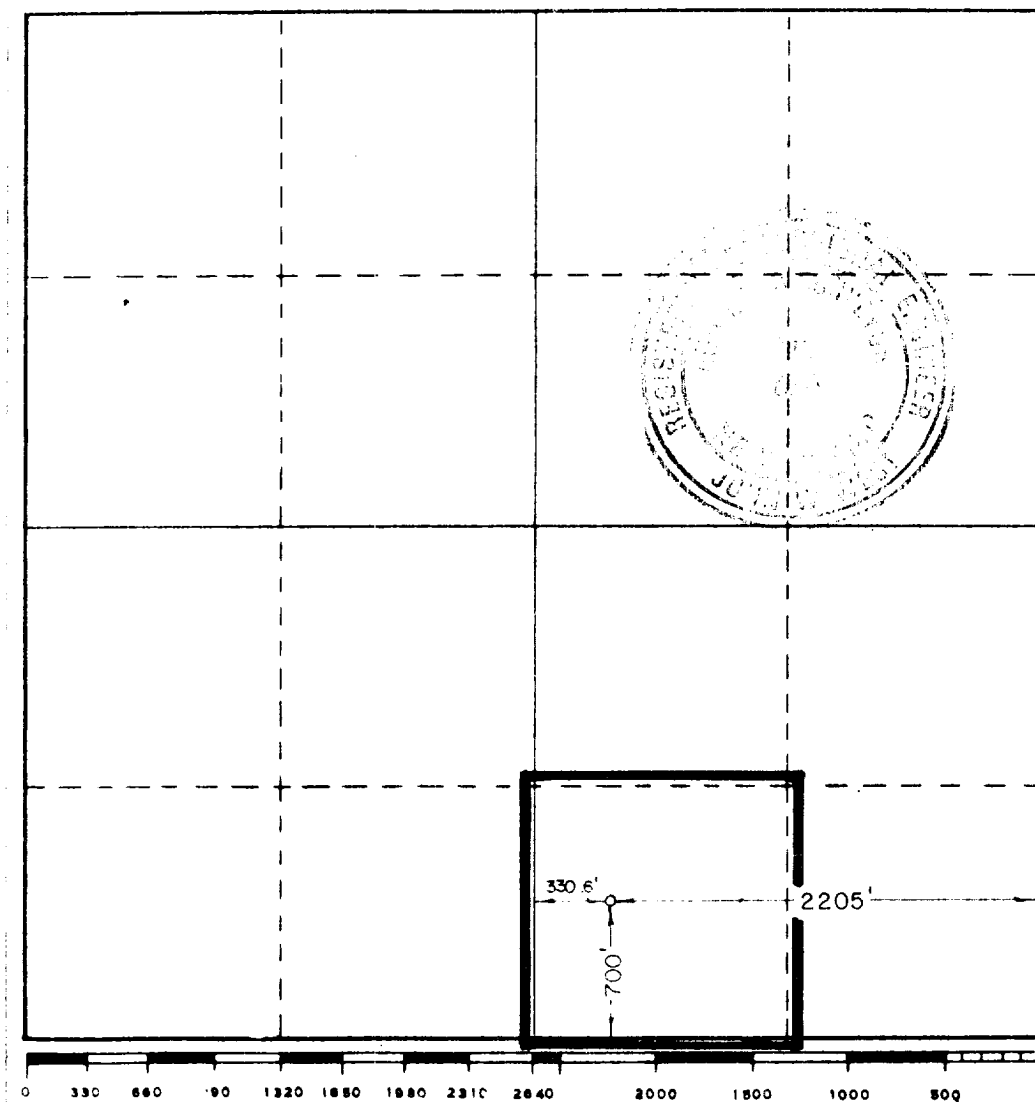
Operator PENTA EXPLORATION COMPANY			Lease GULF FEDERAL			Well No. 1		
Tract Letter 0	Section 13	Township 26S	Range 29E	County EDDY				
Actual Footage Location of Well: 700 feet from the SOUTH line and 2205 feet from the EAST line								
Ground Level Elev. 2988.9	Producing Formation Delaware Mountain Group		Pool Bushy Draw Delaware			Dedicated Acreage: 40 Acres		

1. Outline the acreage dedicated to the subject well by colored pencil or hachure marks on the plat below.
2. If more than one lease is dedicated to the well, outline each and identify the ownership thereof (both as to working interest and royalty).
3. If more than one lease of different ownership is dedicated to the well, have the interests of all owners been consolidated by communitization, unitization, force-pooling, etc?

☐ Yes ☐ No If answer is "yes," type of consolidation \_\_\_\_\_

If answer is "no," list the owners and tract descriptions which have actually been consolidated. (Use reverse side of this form if necessary.) \_\_\_\_\_

No allowable will be assigned to the well until all interests have been consolidated (by communitization, unitization, forced-pooling, or otherwise) or until a non-standard unit, eliminating such interests, has been approved by the Commission.



CERTIFICATION

I hereby certify that the information contained herein is true and complete to the best of my knowledge and belief.

Name  
James A. Knauf  
Position  
Agent  
Company  
PENTA EXPLORATION COMPANY  
Date  
December 6, 1984

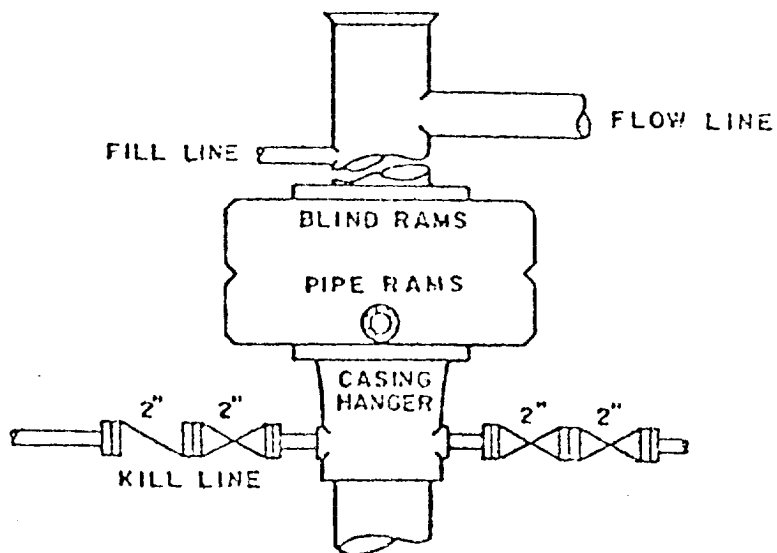
I hereby certify that the well location shown on this plat was plotted from field notes of actual surveys made by me or under my supervision, and that the same is true and correct to the best of my knowledge and belief.

Date Surveyed  
12/4/84  
Registered Professional Engineer and/or Land Surveyor

*John W. West*  
Certificate No. JOHN W. WEST, 676  
RONALD J. EIDSON, 3239

BLOWOUT PREVENTER ARRANGEMENT

Penta Exploration Company  
Well #1 Gulf Federal  
SW-SE 13-26S-29E



900 Series

## SUPPLEMENTAL DRILLING DATA

PENTA EXPLORATION COMPANY  
WELL #1 GULF FEDERAL  
SW $\frac{1}{4}$ SE $\frac{1}{4}$  SEC. 13-26S-29E  
EDDY COUNTY, NEW MEXICO

1. SURFACE FORMATION: Unconsolidated Sands of Quaternary Age.

2. ESTIMATED TOPS OF GEOLOGIC MARKERS (G.L. Elevation 2989'):

Anhydrite	350'	Delaware Sand	3185'
Salado	470'	Cherry Canyon	4100'
Base Lower Salt	2950'	Brushy Canyon	5250'
Delaware Lime	3150'	Bone Springs	7000'

3. POSSIBLE HYDROCARBON BEARING ZONES:

Bell Canyon: Oil & gas  
Cherry Canyon: Oil  
Brushy Canyon: Oil

4. CASING DESIGN:

<u>Size</u>	<u>Interval</u>	<u>Weight</u>	<u>Grade</u>	<u>Joint</u>
13 3/8"	0 - 400'	48.0#	J-55	STC
8 5/8"	0 - 2400'	24.0#	J-55	STC
	2400 - 3150'	32.0#	J-55	STC
4 1/2"	0 - 6500'	10.5#	J-55	STC

5. PRESSURED CONTROL EQUIPMENT: Two Ram-Type Preventors. A sketch of BOP stack is attached.

6. CIRCULATING MEDIUM:

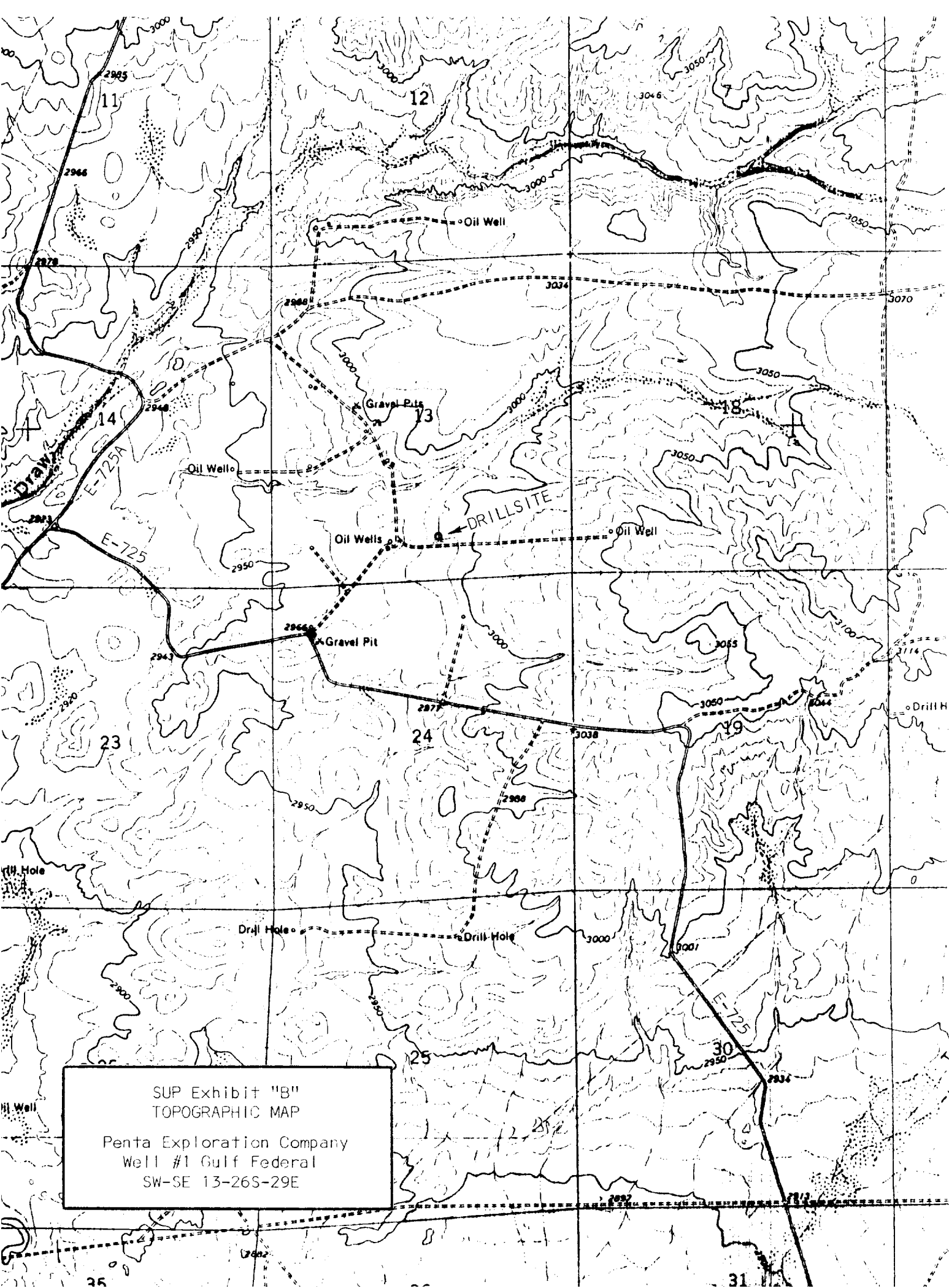
0 - 400' Fresh water with gel or lime as needed for viscosity.  
400 - 3150' Brine  
3150 - 6000' Cut brine conditioned as necessary for control of viscosity and water loss.

7. AUXILIARY EQUIPMENT: Drill string safety valve.

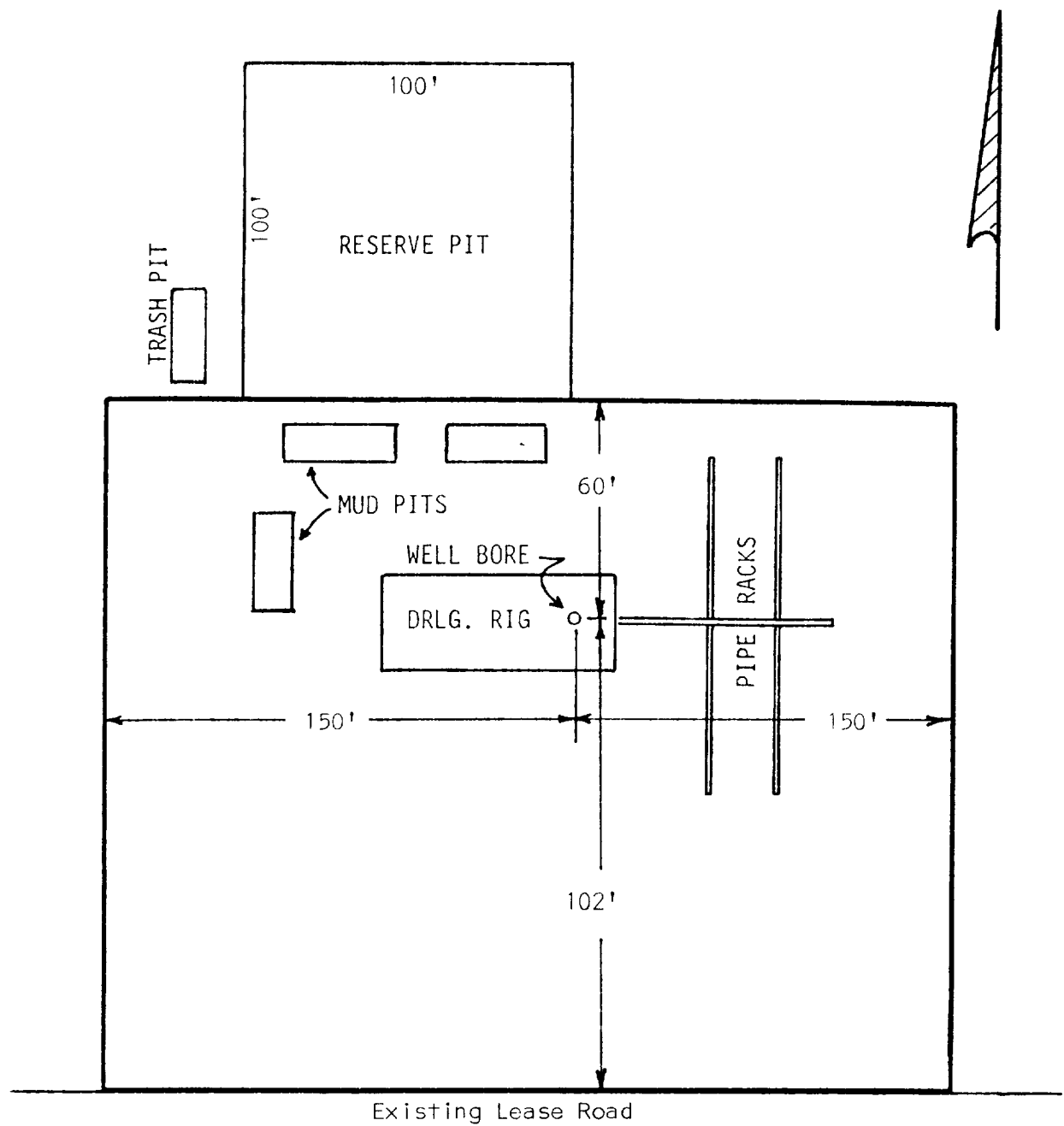
8. TESTING, LOGGING AND CORING PROGRAMS: No coring or DST's are planned. Electric logs will include a Compensated Neutron Log with Gamma Ray.

9. ABNORMAL PRESSURES, TEMPERATURES OR GAS: None anticipated.

10. ANTICIPATED STARTING DATE: It is planned that operations will commence about December 26, 1984. Duration of drilling, completion and testing operations should be two to six weeks.



SUP Exhibit "B"  
TOPOGRAPHIC MAP  
Penta Exploration Company  
Well #1 Gulf Federal  
SW-SE 13-26S-29E



SUP Exhibit "D"  
SKETCH OF WELL PAD  
Penta Exploration Company  
Well #1 Gulf Federal  
SW-SE 13-26S-29E