

UNITED STATES
DEPARTMENT OF THE INTERIOR
GEOLOGICAL SURVEY

APPLICATION FOR PERMIT TO DRILL, DEEPEN, OR PLUG BACK

SUBMITTED BY
RECEIVED BY
(Other instructions on
reverse side)

JAN 24 1985

Form approved.
Budget Bureau No. 42-R1 25.

30-DIS-25171

5. LEASE DESIGNATION AND SERIAL NO.

N4-31649

6. IF INDIAN, ALLOTTEE OR TRIBE NAME

1a. TYPE OF WORK

DRILL ☒DEEPEN ☐PLUG BACK ☐

b. TYPE OF WELL

OIL
WELL ☒GAS
WELL ☐

OTHER

SINGLE
ZONE ☐MULTIPLE
ZONE ☐

2. NAME OF OPERATOR

YATES PETROLEUM CORPORATION

3. ADDRESS OF OPERATOR

207 SOUTH FOURTH STREET, ARTESIA, NEW MEXICO 88210

4. LOCATION OF WELL (Report location clearly and in accordance with any State requirements.)

At surface

560' FSL and 660' FEL

At proposed prod. zone

SAME

14. DISTANCE IN MILES AND DIRECTION FROM NEAREST TOWN OR POST OFFICE*

7. UNIT AGREEMENT NAME

8. FARM OR LEASE NAME

Melson "ZS" Federal

9. WELL NO.

1

10. FIELD AND POOL, OR WILDCAT

Wildcat Delaware

11. SEC., T., R., M., OR BLK.
AND SURVEY OR AREA

Sec. 8-T26S-R30E

12. COUNTY OR PARISH

Eddy

13. STATE

NM

15. DISTANCE FROM PROPOSED*

LOCATION TO NEAREST
PROPERTY OR LEASE LINE, FT.
(Also to nearest dril. unit line, if any)560'
660'

16. NO. OF ACRES IN LEASE

1280

17. NO. OF ACRES ASSIGNED
TO THIS WELL

40

18. DISTANCE FROM PROPOSED LOCATION*
TO NEAREST WELL, DRILLING, COMPLETED,
OR APPLIED FOR, ON THIS LEASE, FT.

19. PROPOSED DEPTH

7400'

20. ROTARY OR CABLE TOOLS

Rotary

21. ELEVATIONS (Show whether DF, RT, GR, etc.)

3076' GL

22. APPROX. DATE WORK WILL START*

ASAP

23.

PROPOSED CASING AND CEMENTING PROGRAM

SIZE OF HOLE	SIZE OF CASING	WEIGHT PER FOOT	SETTING DEPTH	QUANTITY OF CEMENT
17 1/2"	13 3/8"	48# H-40	884'	500 sx circulated
7 7/8"	5 1/2"	17# K-55& N-80		
		15.5#+17# K-55	7400'	350 sx

We propose to drill and test the Delaware and intermediate formations. Approximately 884' of surface casing will be set and cement circulated to shut off gravel and caving. If commercial, production casing will be run and cemented with adequate cover, perforated and stimulated as needed for production.

MUD PROGRAM: FW/LCM to 884', Brine & LCM to TD.


BOP PROGRAM: BOP's will be installed at the offset and tested daily.

GAS NOT DEDICATED

IN ABOVE SPACE DESCRIBE PROPOSED PROGRAM: If proposal is to deepen or plug back, give data on present productive zone and proposed new productive zone. If proposal is to drill or deepen directionally, give pertinent data on subsurface locations and measured and true vertical depths. Give blowout preventer program, if any.

24.

SIGNED



TITLE

Regulatory Agent

DATE

1/21/85

(This space for Federal or State office use)

PERMIT NO.

APPROVAL DATE

APPROVED BY

TITLE

DATE

1-23-85

CONDITIONS OF APPROVAL, IF ANY:

Posted 101
APL & NL
2-1-85

**MEXICO OIL CONSERVATION COMMISSION
WELL LOCATION AND ACREAGE DEDICATION PLAT**

Form C-102
Supersedes C-128
Effective 1-1-65

All distances must be from the outer boundaries of the Section.

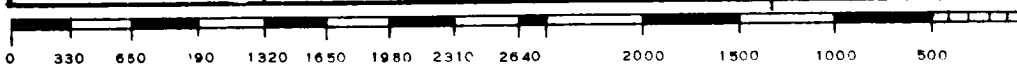
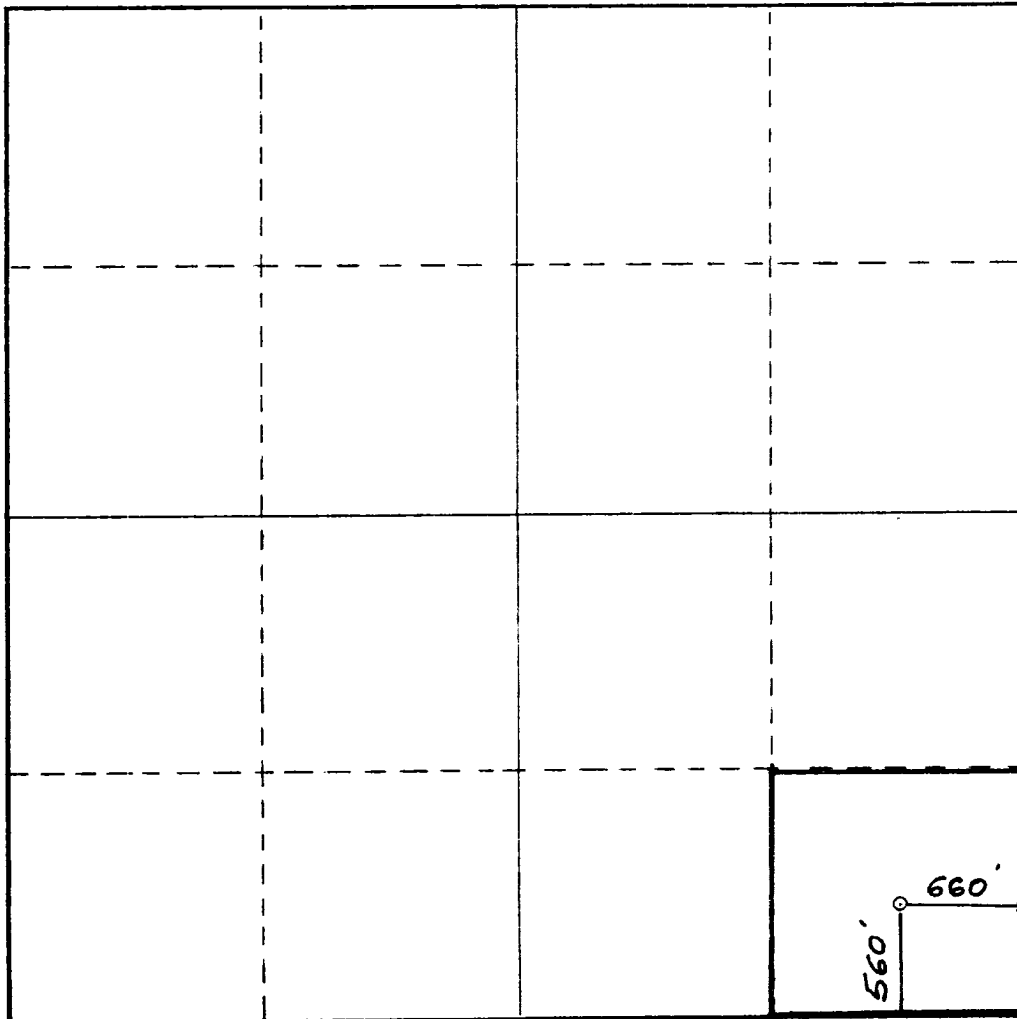
Operator YATES PETROLEUM CORPORATION			Lease Melson ZS Federal		Well No. 1
Unit Letter P	Section 8	Township 26 South	Range 30 East	County Eddy	
Actual Footage Location of Well: <div style="display: flex; justify-content: space-between;"> 560 feet from the South line and 660 feet from the East line </div>					
Ground Level Elev. 3076.	Producing Formation DELAWARE	Pool Wildcat DELAWARE	Dedicated Acreage: 90 Acres		

1. Outline the acreage dedicated to the subject well by colored pencil or hachure marks on the plat below.
2. If more than one lease is dedicated to the well, outline each and identify the ownership thereof (both as to working interest and royalty).
3. If more than one lease of different ownership is dedicated to the well, have the interests of all owners been consolidated by communitization, unitization, force-pooling, etc?

☐ Yes ☒ No If answer is "yes," type of consolidation _____

If answer is "no," list the owners and tract descriptions which have actually been consolidated. (Use reverse side of this form if necessary.) _____

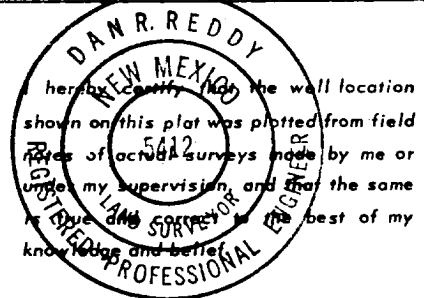
No allowable will be assigned to the well until all interests have been consolidated (by communitization, unitization, forced-pooling, or otherwise) or until a non-standard unit, eliminating such interests, has been approved by the Commission.



CERTIFICATION

I hereby certify that the information contained herein is true and complete to the best of my knowledge and belief.

Cy Cawan
 Name
Cy Cawan
 Position
Regulatory Agent
 Company
Yates Petroleum Corp
 Date
1-22-85



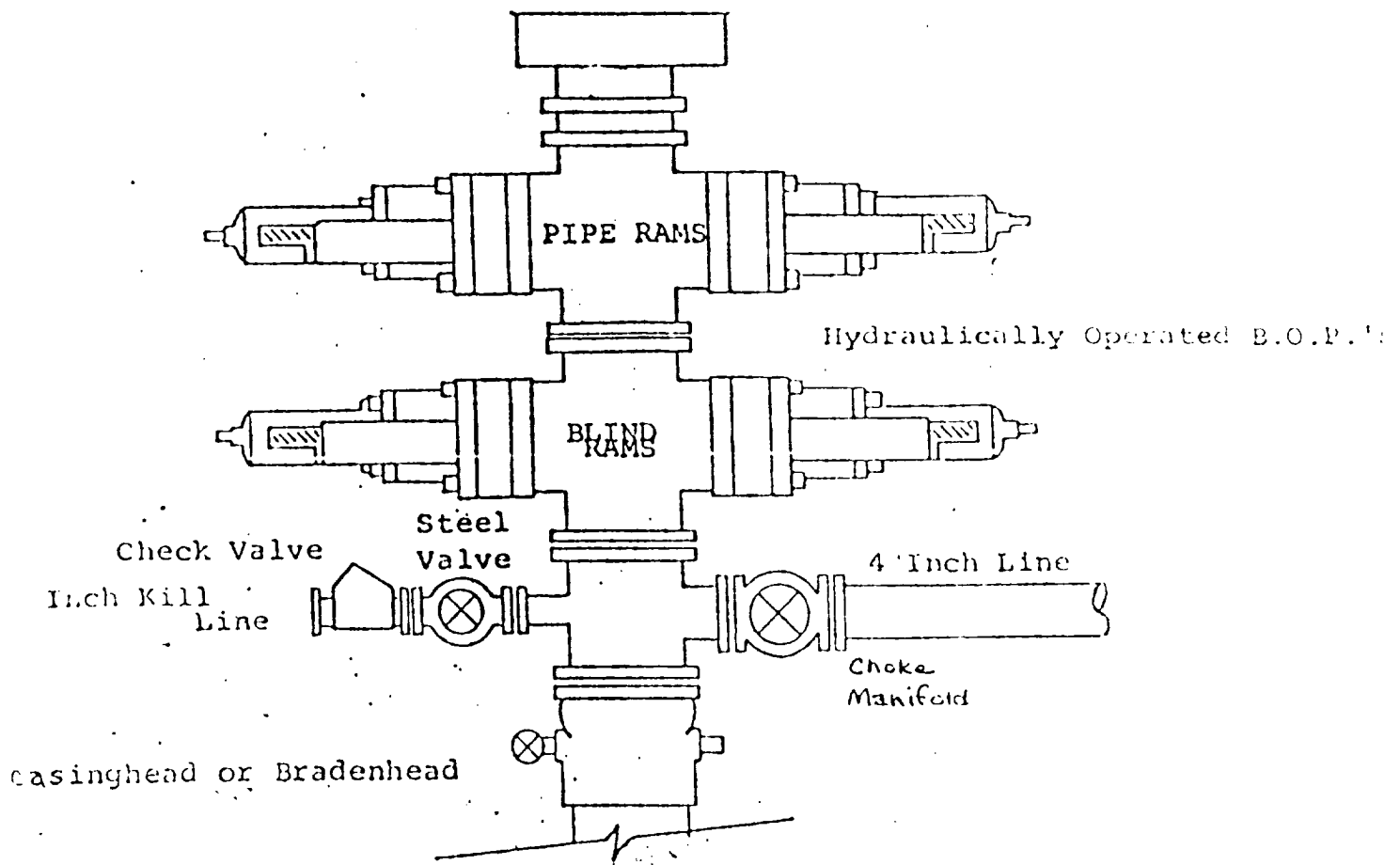
Date Surveyed
January 22, 1985
 Registered Professional Engineer
 and/or Land Surveyor

Dan R. Reddy
 Certificate No.
 NM PE&LS NO 5412

EXHIBIT B

BDP DIAGRAM

RATED 3000[#]



ATES PETROLEUM CORPORATION
Melson "ZS" Federal #1
Section 8-T26S-R30E
CC. Eddy County, New Mexico
560' 660' FSL and 660' FEL

In conjunction with Form 9-331C, Application for Permit to Drill subject well, Yates Petroleum Company submits the following ten items of pertinent information in accordance with BLM requirements.

1. The geologic surface formation is Sandy Alluvium.
2. The estimated tops of geologic markers are as follows:

Delaware	3473	Brushy Canyon	6054
Cherry Canyon	4620	Bone Springs	7310
TD	7400'		

3. The estimated depths at which anticipated water, oil or gas formations are expected to be encountered:

Water: 400'

Oil or Gas: 3500', TD-7400'

4. Proposed Casing Program: See Form 9-331C.
5. Pressure Control Equipment: See Form 9-331C.
6. Mud Program: See Form 9-331C.
7. Auxiliary Equipment: Kelly Cock; pit level indicators and flow sensor equipment; sub with full-opening valve on floor, drill pipe connection.

8. Testing, Logging and Coring Program:

Samples:	10' samples from under surface casing.
DST's:	As warranted.
Coring:	One man unit on out from under intermediate casing.
Logging:	CNL FDC TD to casing w/GR-CNL to surface, DLL TD to surface.

9. No abnormal pressures or temperatures are anticipated.
10. Anticipated starting date: As soon as possible after approval.

← RT 285 7.5 mi

Draw

RM 3042 3052 3070 3088 BM 3091

Brushy

Gravel Pit

Melson 2S
7ED #1

Ingram-Grooms
7ED #1

Grooms 1 #2

Water 11

Pope

Yates Petroleum Corp
Melson 2S 7ED #1

660 FSL + 660 FEL
Sec 8 T26S R30E
CDD County

Exhibit A' NW

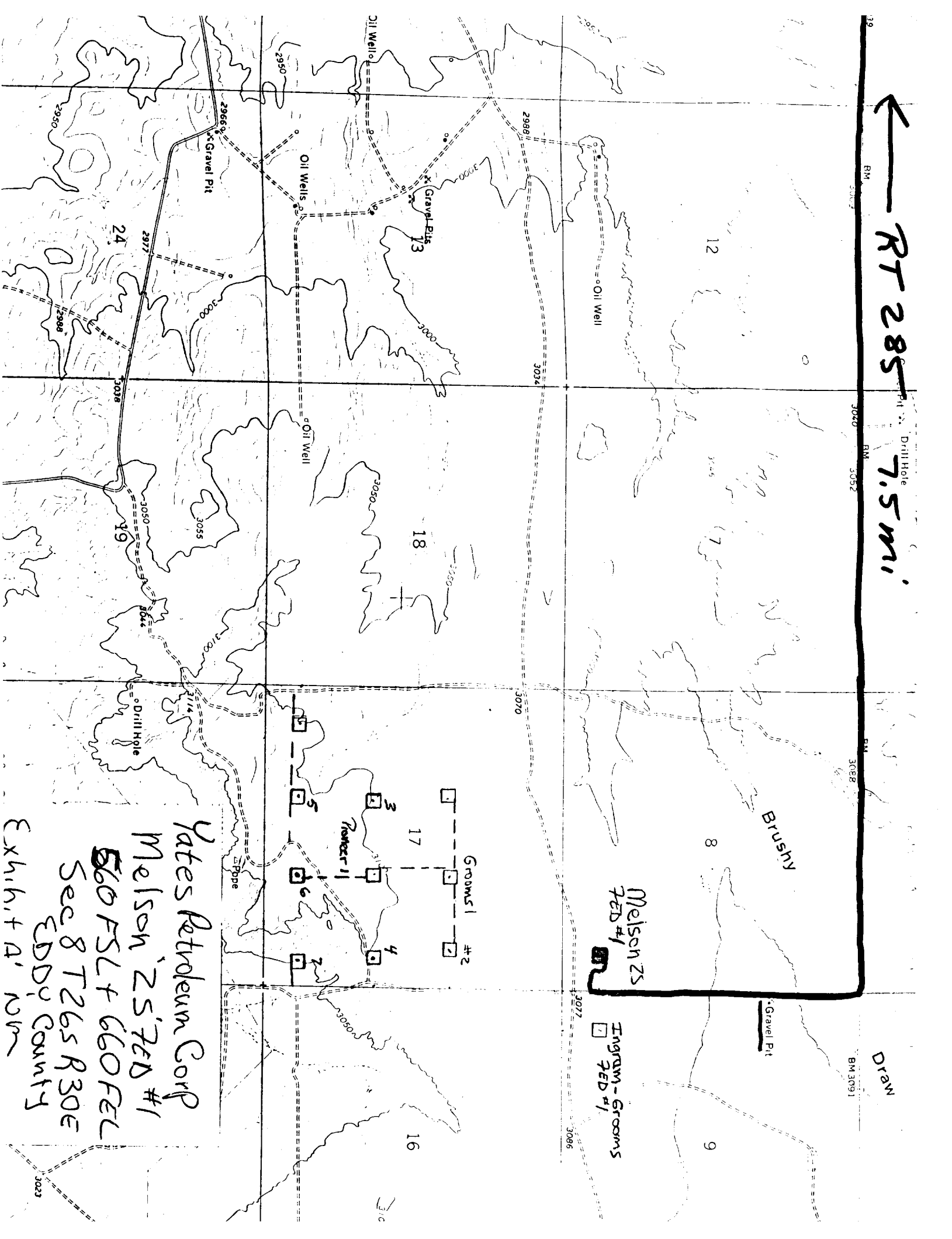
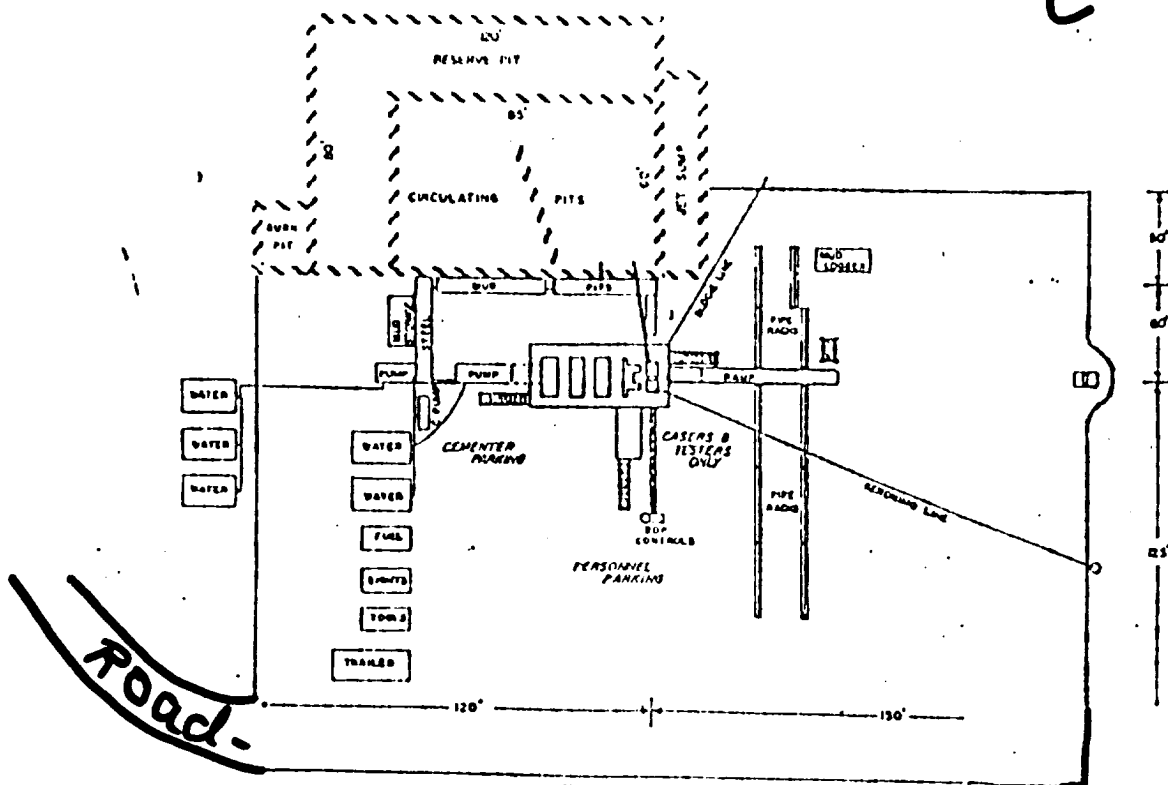
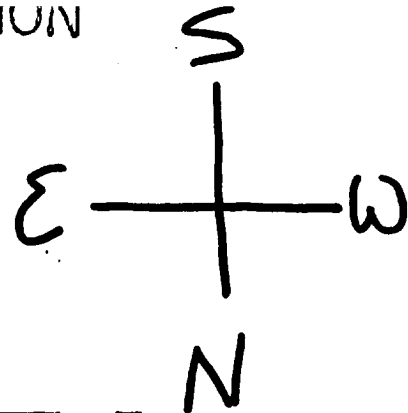
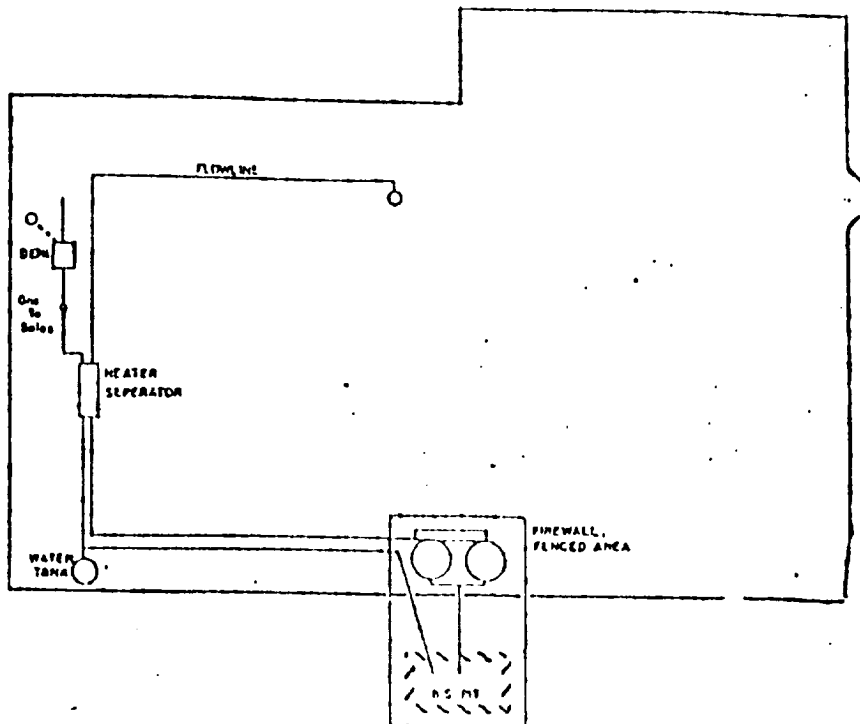


Exhibit C



DRILLING RIG LAYOUT
Scale: 1 inch = 50 feet

Pits South!



TANK BATTERY LAYOUT
Scale: 1 inch = 50 feet