

RECEIVED BY
(November 1983)
(formerly 9-331C)

FEB 12 1985

UNITED STATES
DEPARTMENT OF THE INTERIOR
BUREAU OF LAND MANAGEMENT

SUBMIT TWO COPIES
Instructions on
reverse side

Form approved.
Budget Bureau No. 1004-0136
Expires August 31, 1985

APPLICATION FOR PERMIT TO DRILL, DEEPEN OR PLUG BACK

ARTESIA OFFICE
1. TYPE OF WELL
DRILL ☒ DEEPEN ☐ PLUG BACK ☐
OIL WELL ☒ GAS WELL ☐ OTHER ☐ SINGLE ZONE ☒ MULTIZONE ☐

2. NAME OF OPERATOR
WORTH PETROLEUM COMPANY

3. ADDRESS OF OPERATOR
P. O. BOX 17406, FORT WORTH TEXAS 76102

4. LOCATION OF WELL (Report location clearly and in accordance with any State requirements.)
At surface 2265' FNL AND 1550' FEL OF SECTION 22
At proposed prod. zone

14. DISTANCE IN MILES AND DIRECTION FROM NEAREST TOWN OR POST OFFICE*
16 MILES SOUTH-SOUTHEAST OF MALAGA, NEW MEXICO

15. DISTANCE FROM PROPOSED* LOCATION TO NEAREST PROPERTY OR LEASE LINE, FT. (Also to nearest drlg. unit line, if any) 375'

18. DISTANCE FROM PROPOSED LOCATION* TO NEAREST WELL, DRILLING, COMPLETED, OR APPLIED FOR, ON THIS LEASE, FT. -

21. ELEVATIONS (Show whether DF, RT, GR, etc.)
2884.4' GL

23. PROPOSED CASING AND CEMENTING PROGRAM

SIZE OF HOLE	SIZE OF CASING	WEIGHT PER FOOT	SETTING DEPTH	QUANTITY OF CEMENT
12-1/4"	8-5/8"	24#	400'	SUFFICIENT TO CIRCULATE
7-7/8"	5-1/2"	14#	5200'	300 SACKS

AFTER RUNNING AND SETTING PRODUCTION CASING, PAY ZONE WILL BE PERFORATED AND STIMULATED AS NECESSARY.

SEE ATTACHED FOR: SUPPLEMENTAL DRILLING DATA
BOP SKETCH
SURFACE USE AND OPERATIONS PLAN

APPLICATION HAS BEEN MADE TO NMOC FOR APPROVAL OF THIS UNORTHODOX WELL LOCATION.

IN ABOVE SPACE DESCRIBE PROPOSED PROGRAM: If proposal is to deepen or plug back, give data on present productive zone and proposed new productive zone. If proposal is to drill or deepen directionally, give pertinent data on subsurface locations and measured and true vertical depths. Give blowout prevention program, if any.

24. SIGNED Arthur R. Brown TITLE Agent DATE February 4, 1985

2-12-85
APPROVAL SUBJECT TO
GENERAL REQUIREMENTS AND
SPECIAL STIPULATIONS
ATTACHED

Subject to
Like Approval
by State

N MEXICO OIL CONSERVATION COMMISS
WELL LOCATION AND ACREAGE DEDICATION PLAT

Form C-102
Supersedes C-128
Effective 1-1-65

All distances must be from the outer boundaries of the Section.

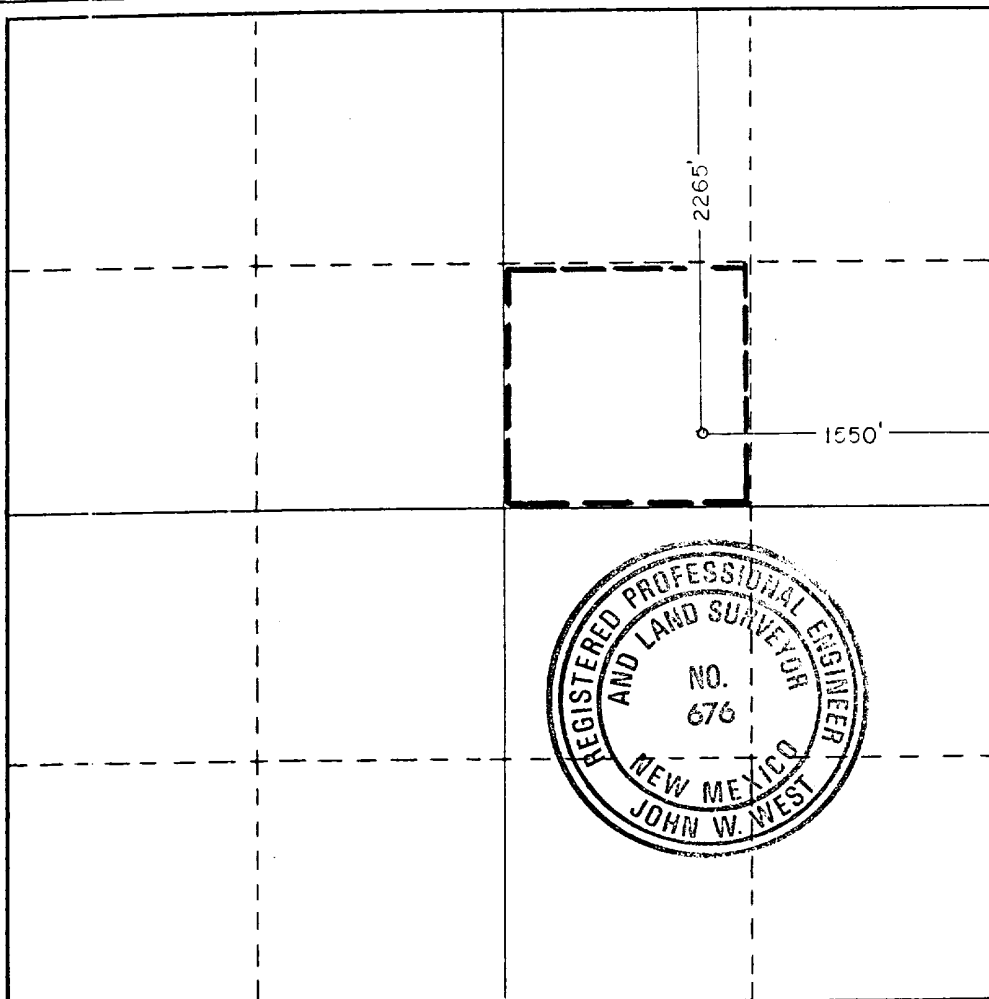
Operator WORTH PETROLEUM CO.			Lease WORTH FED.		Well No. 3
Unit Letter G	Section 22	Township 26S	Range 29E	County EDDY	
Actual Footage Location of Well: 2265 feet from the NORTH line and 1550 feet from the EAST line					
Ground Level Elev. 2884.4	Producing Formation DELAWARE		Pool UNDES. BRUSHY DRAW DELAWARE		Dedicated Acreage: 40 Acres

1. Outline the acreage dedicated to the subject well by colored pencil or hachure marks on the plat below.
2. If more than one lease is dedicated to the well, outline each and identify the ownership thereof (both as to working interest and royalty).
3. If more than one lease of different ownership is dedicated to the well, have the interests of all owners been consolidated by communitization, unitization, force-pooling, etc?

☐ Yes ☐ No If answer is "yes," type of consolidation _____

If answer is "no," list the owners and tract descriptions which have actually been consolidated. (Use reverse side of this form if necessary.) _____

No allowable will be assigned to the well until all interests have been consolidated (by communitization, unitization, forced-pooling, or otherwise) or until a non-standard unit, eliminating such interests, has been approved by the Commission.



CERTIFICATION

I hereby certify that the information contained herein is true and complete to the best of my knowledge and belief.

Name Arthur R. Brown

Position
Agent

Company
WORTH PETROLEUM COMPANY

Date
February 5, 1985

I hereby certify that the well location shown on this plat was plotted from field notes of actual surveys made by me or under my supervision, and that the same is true and correct to the best of my knowledge and belief.

Revised: 02/05/85

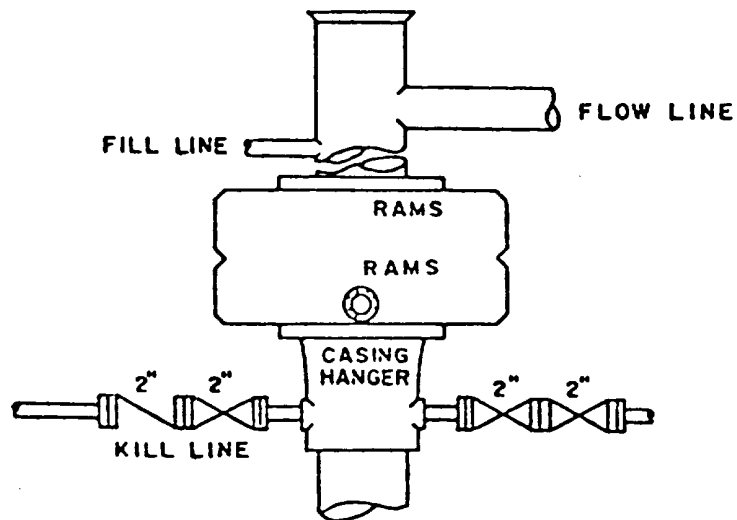
Date Surveyed
1/15/85

Registered Professional Engineer
and/or Land Surveyor

John W. West
Certificate No. JOHN W. WEST, 676

RONALD J. EIDSON, 3239

0 330 660 990 1320 1650 1980 2310 2640 2000 1800 1000 500



BOP STACK

3000 PSI WORKING PRESSURE

BOP ARRANGEMENT

SUPPLEMENTAL DRILLING DATA

WORTH PETROLEUM COMPANY

WELL NO.3 WORTH FEDERAL

1. SURFACE FORMATION: Quaternary.

2. ESTIMATED TOPS OF GEOLOGIC MARKERS:

Rustler Anhydrite	300'
Bell Canyon	2936'
Cherry Canyon	4026'

3. ANTICIPATED POSSIBLE HYDROCARBON BEARING ZONES:

Cherry Canyon	Oil
---------------	-----

4. PROPOSED CASING AND CEMENTING PROGRAM:

CASING SIZE	SETTING DEPTH		WEIGHT	GRADE	JOINT
	FROM	TO			
8-5/8"	0	400'	24#	K-55	STC
5-1/2"	0	5200'	14#	K-55	STC

8-5/8" casing will be cemented with approximately 250 sacks of Class "C" cement. Cement to circulate.

5-1/2" casing will be cemented with approximately 300 sacks of cement.

Equivalent or adequate grades and weights of casing may be substituted at time casing is run, depending on availability.

5. PRESSURE CONTROL EQUIPMENT:

A 3000 psi working pressure, double ram type preventer will be in use while drilling below the surface casing.

A BOP sketch is attached.

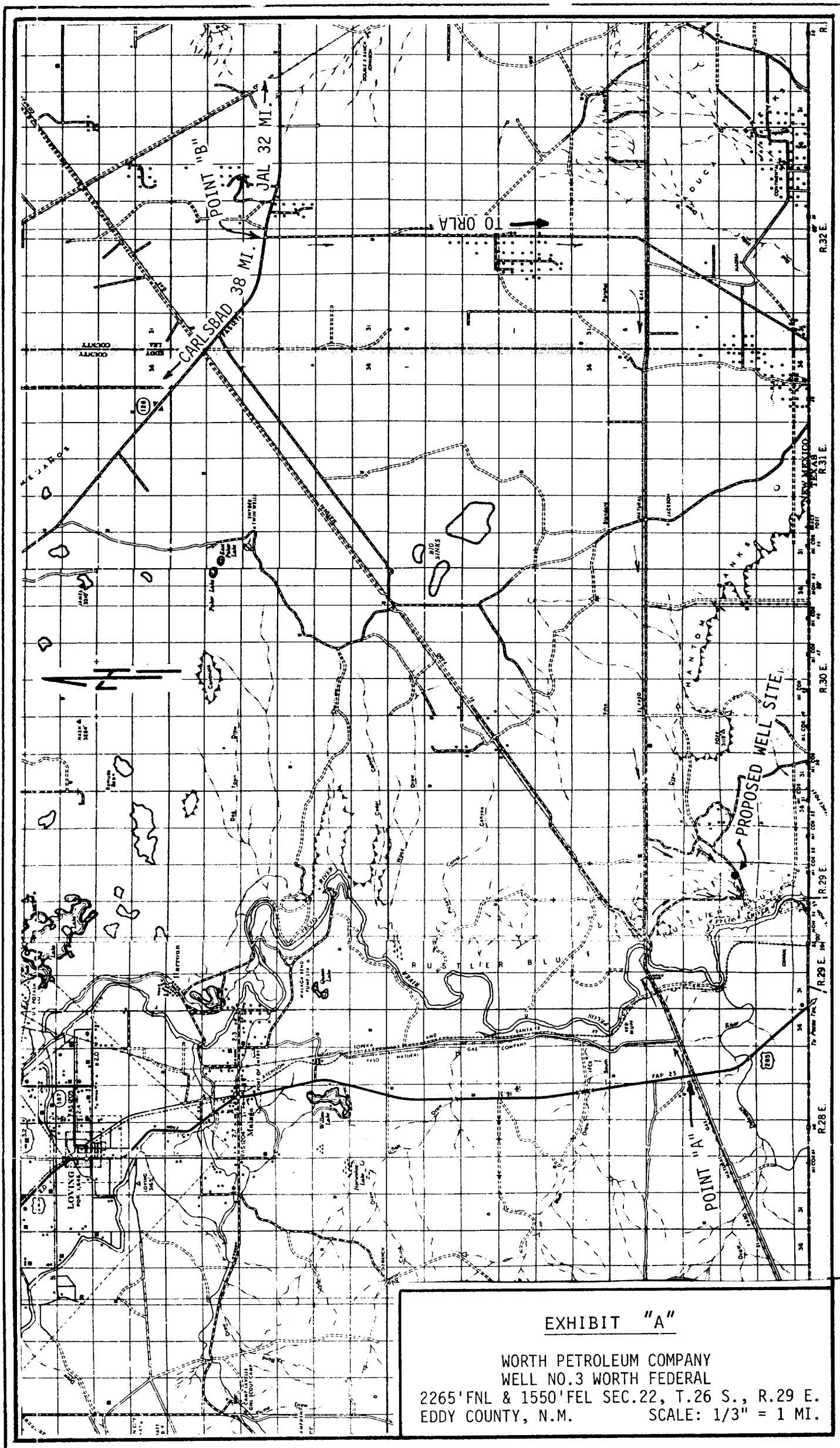


EXHIBIT "A"

WORTH PETROLEUM COMPANY
WELL NO.3 WORTH FEDERAL
2265'FNL & 1550'FEL SEC.22, T.26 S., R.29 E.
EDDY COUNTY, N.M. SCALE: 1/3" = 1 MI.

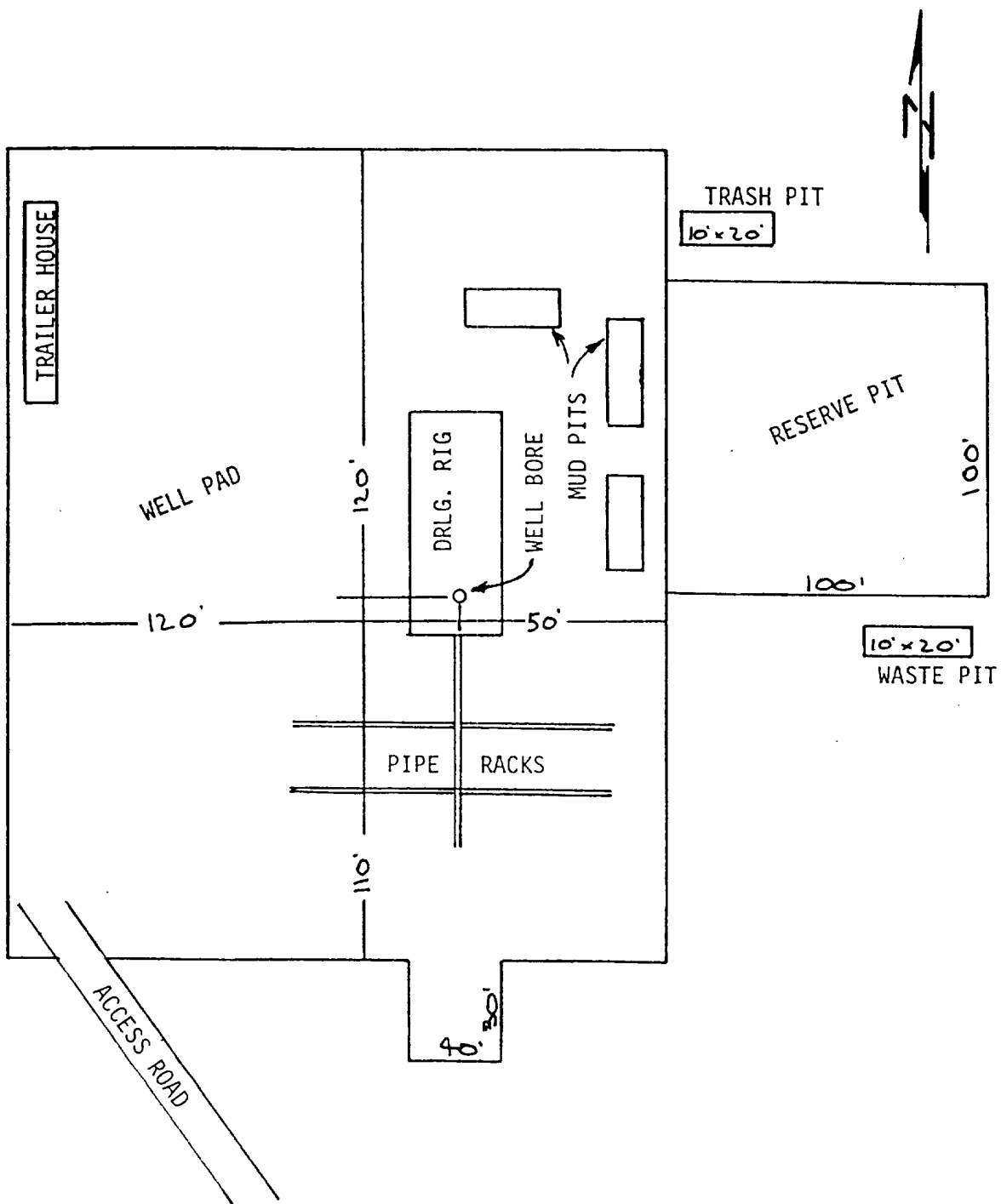


EXHIBIT "C"

WORTH PETROLEUM COMPANY
WELL NO. 3 WORTH FEDERAL
DRILLING RIG LAYOUT
SCALE: None