

RECEIVED BY

APR 25 1985

UNITED STATES
DEPARTMENT OF THE INTERIOR
GEOLOGICAL SURVEY

APPLICATION FOR PERMIT TO DRILL, DEEPEN, OR PLUG BACK

ARTERIAL OFFICE

DRILL ☒DEEPEN ☐PLUG BACK ☐

b. TYPE OF WELL

OIL
WELL ☒GAS
WELL ☐

OTHER

SINGLE
ZONE ☐MULTIPLE
ZONE ☒

2. NAME OF OPERATOR

MAX WILSON, INC. ✓

3. ADDRESS OF OPERATOR

P. O. Drawer 1978 - Roswell, NM 88201

4. LOCATION OF WELL (Report location clearly and in accordance with any State requirements.)*

At surface

1,980' FSL and 1,980' FWL

At proposed prod. zone

Bell Canyon and/or Cherry Canyon

14. DISTANCE IN MILES AND DIRECTION FROM NEAREST TOWN OR POST OFFICE*

19 miles southeast of Whites City, NM

15. DISTANCE FROM PROPOSED*

LOCATION TO NEAREST
PROPERTY OR LEASE LINE, FT.

(Also to nearest drlg. unit line, if any) 1,980'

18. DISTANCE FROM PROPOSED LOCATION*

TO NEAREST WELL, DRILLING, COMPLETED,
OR APPLIED FOR, ON THIS LEASE, FT.

2,640'

16. NO. OF ACRES IN LEASE

1,240'

19. PROPOSED DEPTH

3,900'

17. NO. OF ACRES ASSIGNED
TO THIS WELL

40

20. ROTARY OR CABLE TOOLS

cable tools

21. ELEVATIONS (Show whether DF, RF, GR, etc.)

3,246' GR

22. APPROX. DATE WORK WILL START*

5/20/85

23.

PROPOSED CASING AND CEMENTING PROGRAM

SIZE OF HOLE	SIZE OF CASING	WEIGHT PER FOOT	SETTING DEPTH	QUANTITY OF CEMENT
12" 14 3/8"	10 3/4"	40.5#	275'	250 SX CIRCULATE
10 1/2" 10"	4 1/2"	9.5#	3,900'	275 SX

IN ABOVE SPACE DESCRIBE PROPOSED PROGRAM: If proposal is to deepen or plug back, give data on present productive zone and proposed new productive zone. If proposal is to drill or deepen directionally, give pertinent data on subsurface locations and measured and true vertical depths. Give blowout preventer program, if any.

24. MAX WILSON, INC.
SIGNED BY: *[Signature]* TITLE President DATE 4/9/85

(This space for Federal or State office use)

PERMIT NO.

APPROVAL DATE

APPROVED BY *[Signature]*
CONDITIONS OF APPROVAL, IF ANY:

TITLE

DATE 4-24-85

*See Instructions On Reverse Side

APPROVAL SUBJECT TO
GENERAL REQUIREMENTS AND
SPECIAL STIPULATIONS
ATTACHED

Partial ID
HPT + NL
5-3-85

W MEXICO OIL CONSERVATION COMMISSION
WELL LOCATION AND ACREAGE DEDICATION PLAT

Form C-102
Supersedes C-128
Effective 1-1-65

All distances must be from the outer boundaries of the Section.

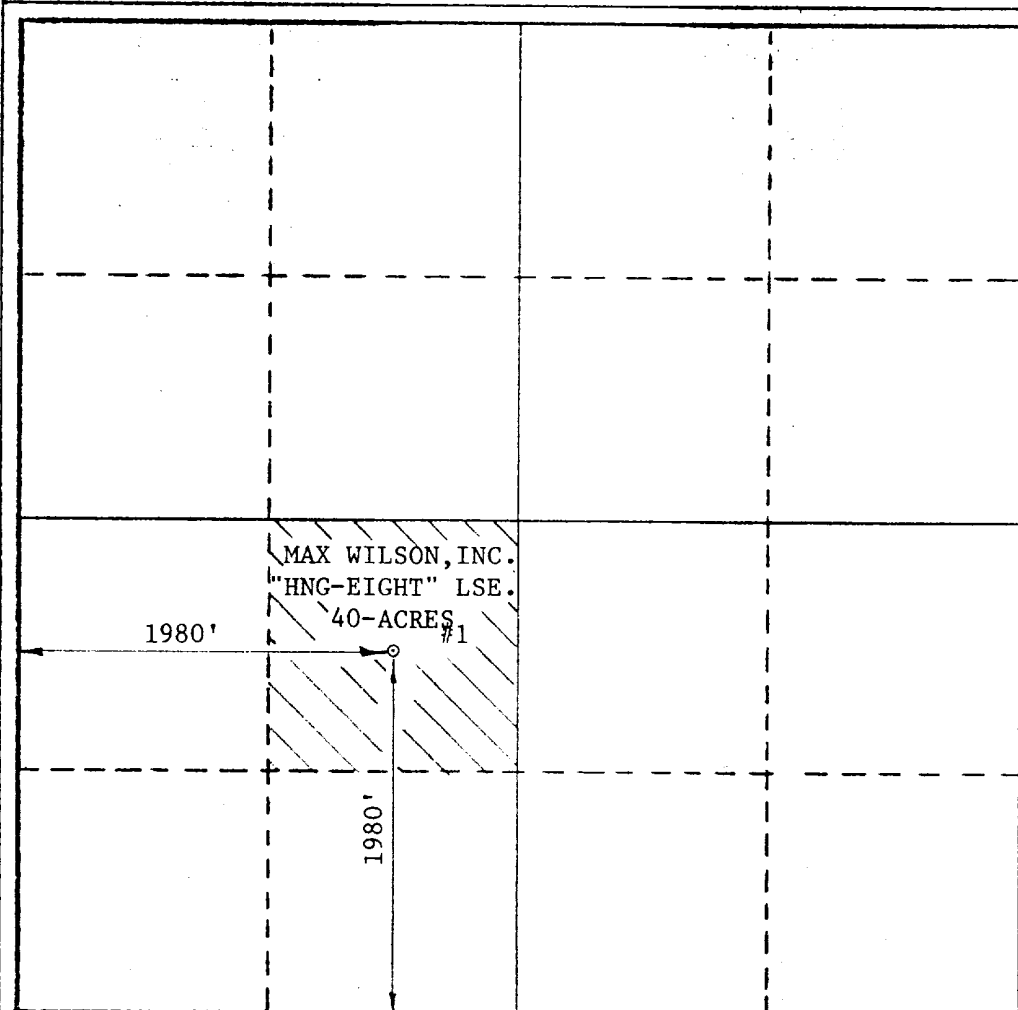
Operator MAX WILSON, INC.			Lease HNG - EIGHT			Well No. 1		
Unit Letter "K"	Section 8	Township -25-S	Range -27-E	County EDDY				
Actual Footage Location of Well: 1980 feet from the SOUTH line and 1980 feet from the WEST line								
Ground Level Elev. 3246'	Producing Formation DELAWARE			Pool WILDCAT			Dedicated Acreage: 40 Acres	

1. Outline the acreage dedicated to the subject well by colored pencil or hachure marks on the plat below.
2. If more than one lease is dedicated to the well, outline each and identify the ownership thereof (both as to working interest and royalty).
3. If more than one lease of different ownership is dedicated to the well, have the interests of all owners been consolidated by communitization, unitization, force-pooling, etc?

☐ Yes ☐ No If answer is "yes," type of consolidation _____

If answer is "no," list the owners and tract descriptions which have actually been consolidated. (Use reverse side of this form if necessary.) _____

No allowable will be assigned to the well until all interests have been consolidated (by communitization, unitization, forced-pooling, or otherwise) or until a non-standard unit, eliminating such interests, has been approved by the Commission.



CERTIFICATION

I hereby certify that the information contained herein is true and complete to the best of my knowledge and belief.

Name Pres.
Position Max Wilson, Inc.
Company

Date 4/9/85

I hereby certify that the well location shown on this plat was plotted from field notes of actual surveys made by me or under my supervision, and that the same is true and correct to the best of my knowledge and belief.

Date Surveyed
APRIL 4, 1985

Registered Professional Engineer
and/or Land Surveyor
Max A. Schumann Jr.
MAX A. SCHUMANN JR.

Certificate No. **1510**

0 330 660 990 1320 1650 1980 2310 2640 2970 3300 3630 3960 4290 4620 4950 5280 5610 5940 6270 6600

APPLICATION FOR DRILLING

Max Wilson, Inc. No. 1 H N G Federal - 8
1,980' FSL and 1,980' FWL
T.25S, R.27E, N.M.P.M.
Section 8: NE $\frac{1}{4}$ SW $\frac{1}{4}$
Eddy County, New Mexico

In conjunction with Form 9-311C, Application For Permit To Drill subject well, Max Wilson, Inc. submits the following ten items of pertinent information in accordance with Mineral Management Service requirements:

1. The geologic surface formation is Ochoan.
2. The estimated tops of geologic markers are as follows:

Top Salt	900'
Base Salt	1,750'
Delaware Limestone	2,000'
Delaware Sand	2,100'
Cherry Canyon	3,900'

3. The estimated depths at which anticipated water, oil or gas formations are expected to be encountered:

Water: Approximately 150'
Oil or gas: 3,900'
Cherry Canyon: 3,900'

4. Proposed Casing Program: See Form 9-331C
5. Pressure Control Equipment: Cable tool control head
6. Mud Program: Cable tool hole
7. Auxiliary Equipment: Cable tool rig
8. Testing, Logging and Coring Programs:

Cable tool open hole testing

Logging: Gama Ray Neutron to total depth
9. No abnormal pressures or temperatures are anticipated.
10. Anticipated starting date: May 20, 1985

Exhibit A

