

RECEIVED BY

APR 29 1985

APPLICATION FOR PERMIT TO DRILL, DEEPEN, OR PLUG BACK

1a. TYPE OF WELL

DRILL ☒DEEPEN ☐PLUG BACK ☐

b. TYPE OF WELL

OIL
WELL ☒GAS
WELL ☐

OTHER

SINGLE
ZONE ☐MULTIPLE
ZONE ☒

2. NAME OF OPERATOR

MAX WILSON, INC. ✓

3. ADDRESS OF OPERATOR

P. O. Drawer 1978 - Roswell, NM 88201

4. LOCATION OF WELL (Report location clearly and in accordance with any State requirements.)*

At surface

660' FSL and 660' FEL

At proposed prod. zone

Bell Canyon and/or Cherry Canyon

14. DISTANCE IN MILES AND DIRECTION FROM NEAREST TOWN OR POST OFFICE*

16 miles south of Whites City, NM

15. DISTANCE FROM PROPOSED*

LOCATION TO NEAREST
PROPERTY OR LEASE LINE, FT.

(Also to nearest drlg. unit line, if any)

660'

16. NO. OF ACRES IN LEASE

640

17. NO. OF ACRES ASSIGNED
TO THIS WELL

40

18. DISTANCE FROM PROPOSED LOCATION*
TO NEAREST WELL, DRILLING, COMPLETED,
OR APPLIED FOR, ON THIS LEASE, FT.

5,700'

19. PROPOSED DEPTH

3,600'

20. ROTARY OR CABLE TOOLS

cable tools

21. ELEVATIONS (Show whether DF, RT, GR, etc.)

3,324' GR

22. APPROX. DATE WORK WILL START*

4/20/85

23.

PROPOSED CASING AND CEMENTING PROGRAM

SIZE OF HOLE	SIZE OF CASING	WEIGHT PER FOOT	SETTING DEPTH	QUANTITY OF CEMENT
32" 14 3/8"	10 3/4"	40.5#	275'	250 SX CIRCULATE
10 1/2" 10"	4 1/2"	9.5#	3,600'	250 SX

IN ABOVE SPACE DESCRIBE PROPOSED PROGRAM: If proposal is to deepen or plug back, give data on present productive zone and proposed new productive zone. If proposal is to drill or deepen directionally, give pertinent data on subsurface locations and measured and true vertical depths. Give blowout preventer program, if any.

24.

MAX WILSON, INC.

SIGNED BY:

TITLE President

DATE 4/9/85

(This space for Federal or State office use)

PERMIT NO.

APPROVAL DATE

APPROVED BY

TITLE

DATE

CONDITIONS OF APPROVAL, IF ANY:

*See Instructions On Reverse Side

APPROVAL SUBJECT TO
GENERAL REQUIREMENTS AND
SPECIAL STIPULATIONS
ATTACHED

Form approved.
Budget Bureau No. 42-R1425.

NM OIL CONS. DIV. NONCATE
Drawer DD (Other in. actions on
Artesia, NM 88210 (Reverse side)

30-015-25280

5. LEASE DESIGNATION AND SERIAL NO.

NM 26870

6. IF INDIAN, ALLOTTEE OR TRIBE NAME

7. UNIT AGREEMENT NAME

8. FARM OR LEASE NAME

H N G - 35 Federal

9. WELL NO.

1

10. FIELD AND POOL, OR WILDCAT

Wildcat - *Delaware*11. SEC., T., R., M., OR BLK.
AND SURVEY OR AREA

Sec. 35, T.25S, R.26E

12. COUNTY OR PARISH

13. STATE

Eddy

NM

Posted I.D.I.
API & NL
5-3-85

V MEXICO OIL CONSERVATION COMMISSION
WELL LOCATION AND ACREAGE DEDICATION PLAT

Form C-102
Supersedes C-128
Effective 1-1-65

All distances must be from the outer boundaries of the Section.

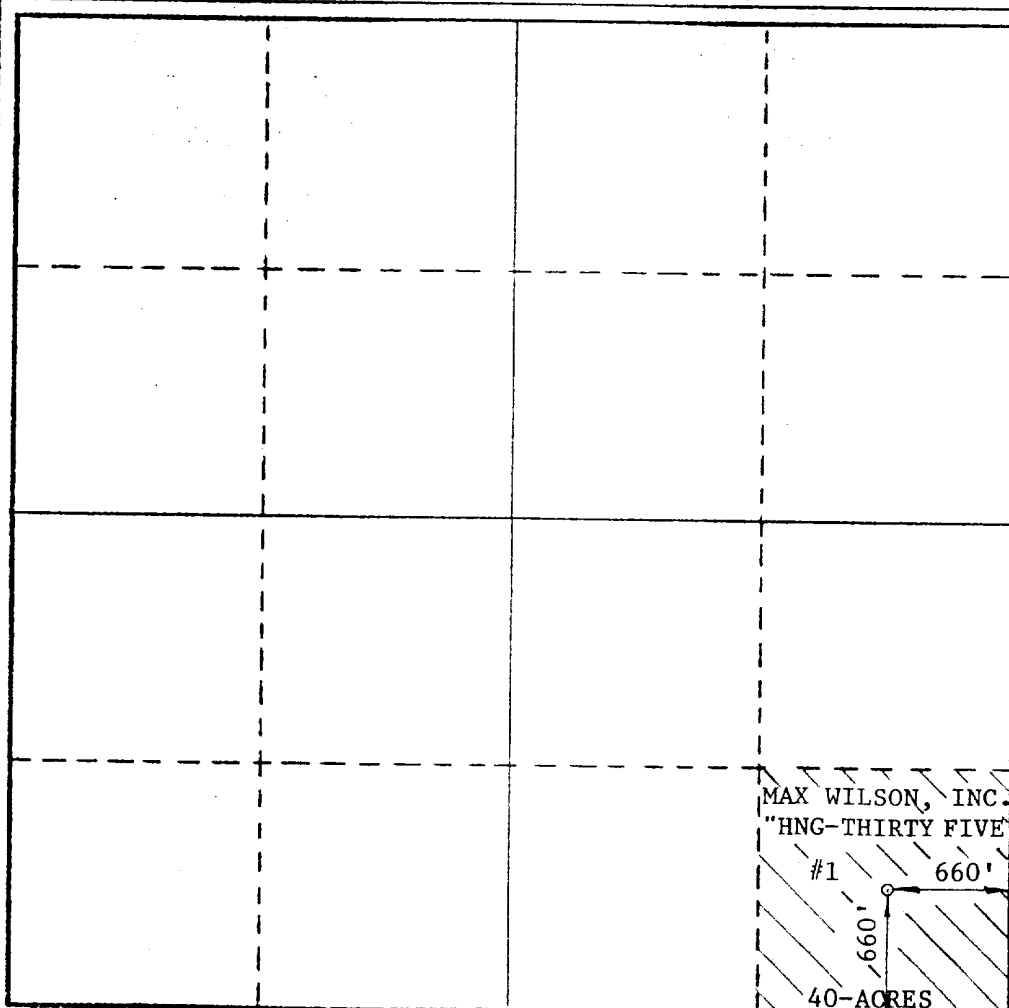
Operator MAX WILSON, INC.			Lease HNG - THIRTY FIVE Fed.		Well No. 1
Unit Letter "P"	Section 35	Township -25-S	Range -26-E	County EDDY	
Actual Footage Location of Well: 660 feet from the SOUTH line and 660 feet from the EAST line					
Ground Level Elev. 3324	Producing Formation DELAWARE		Pool WILDCAT	Dedicated Acreage: 40 Acres	

1. Outline the acreage dedicated to the subject well by colored pencil or hachure marks on the plat below.
2. If more than one lease is dedicated to the well, outline each and identify the ownership thereof (both as to working interest and royalty).
3. If more than one lease of different ownership is dedicated to the well, have the interests of all owners been consolidated by communitization, unitization, force-pooling, etc?

☐ Yes ☐ No If answer is "yes," type of consolidation _____

If answer is "no," list the owners and tract descriptions which have actually been consolidated. (Use reverse side of this form if necessary.) _____

No allowable will be assigned to the well until all interests have been consolidated (by communitization, unitization, forced-pooling, or otherwise) or until a non-standard unit, eliminating such interests, has been approved by the Commission.



CERTIFICATION

I hereby certify that the information contained herein is true and complete to the best of my knowledge and belief.

[Signature]
Name

Position
Pres.

Company
Max Wilson Inc.

Date
4/9/85

I hereby certify that the well location shown on this plat was plotted from field notes of actual surveys made by me or under my supervision, and that the same is true and correct to the best of my knowledge and belief.

Date Surveyed
APRIL 4, 1985

Registered Professional Engineer and/or Land Surveyor

[Signature]
MAX A. SCHUMANN JR.

Certificate No.

1510

APPLICATION FOR DRILLING

Max Wilson, Inc. No. 1 H N G Federal - 35
660' FSL and 660' FEL
T. 25S, R. 26E, N. M. P. M.
Section 35: SE $\frac{1}{4}$ SE $\frac{1}{4}$
Eddy County, New Mexico

In conjunction with Form 9-311C, Application For Permit To Drill subject well, Max Wilson, Inc. submits the following ten items of pertinent information in accordance with Mineral Management Service requirements:

1. The geologic surface formation is Ochoan.
2. The estimated tops of geologic markers are as follows:

Top Salt	800'
Base Salt	1,650'
Delaware Limestone	1,900'
Delaware Sand	1,950'
Cherry Canyon	3,600'

3. The estimated depths at which anticipated water, oil or gas formations are expected to be encountered:

Water: Approximately 150'
Oil or gas: 3,600'
Cherry Canyon: 3,600'

4. Proposed Casing Program: See Form 9-331C
5. Pressure Control Equipment: Cable tool control head
6. Mud Program: Cable tool hole
7. Auxiliary Equipment: Cable tool rig
8. Testing, Logging and Coring Programs:

Cable tool open hole testing

Logging: Gama Ray Neutron to total depth
9. No abnormal pressures or temperatures are anticipated.
10. Anticipated starting date: April 20, 1985

Exhibit A

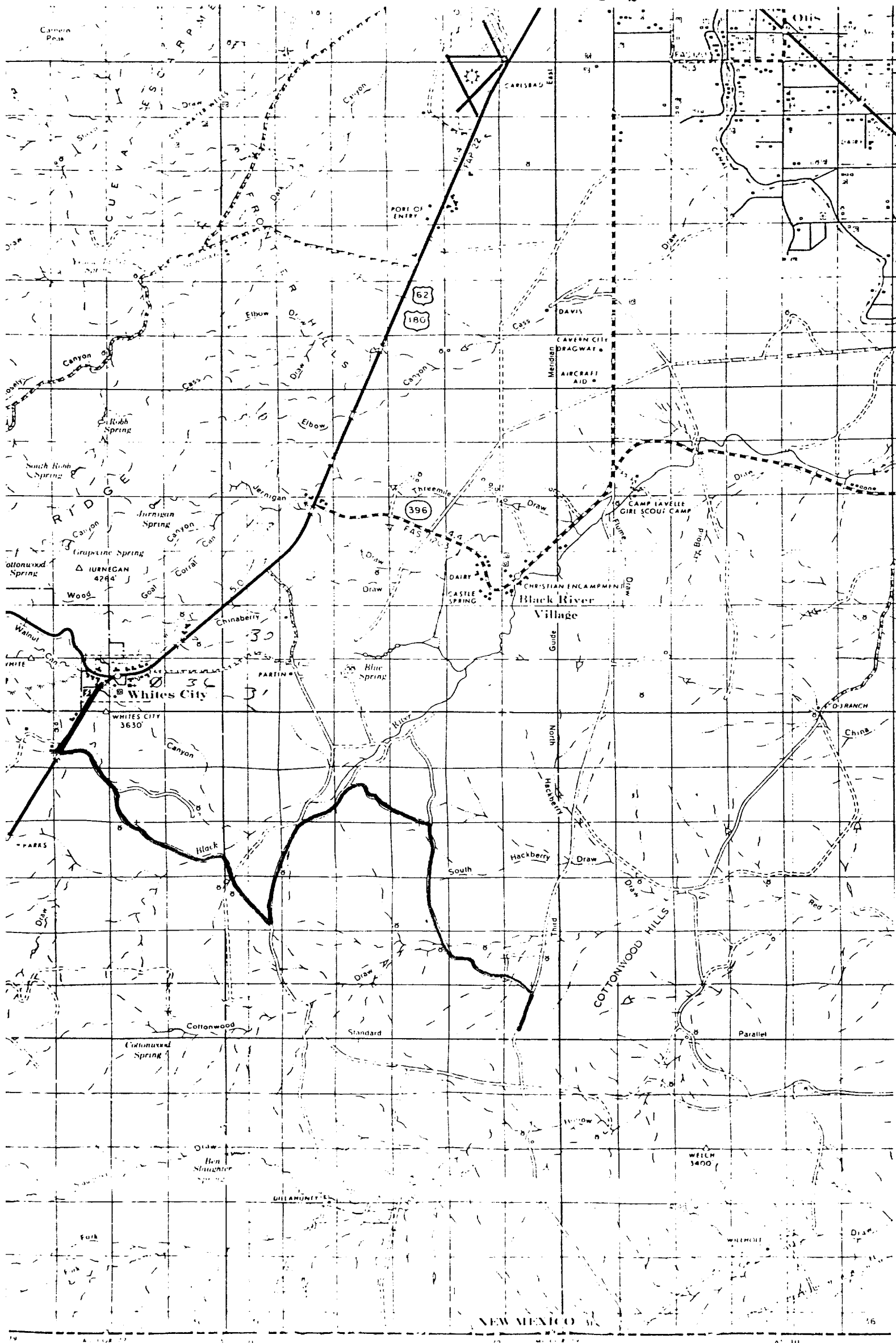


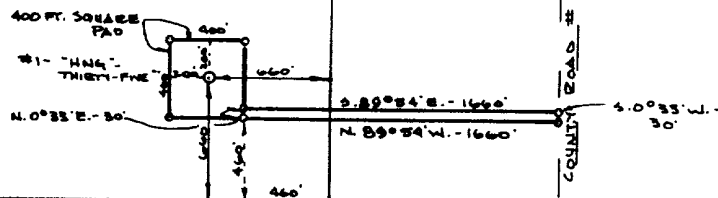
Exhibit C



35

36

○ - SET 1/2" REINF. BARS



2

1

FIELD NOTE DESCRIPTION OF A 30 FT. ROAD SURVEY FOR MAX. WILSON, INC. TO SERVE THE "HNG-THIRTY FIVE" LEASE, WELL NO. 1, LOCATED 660 FEET FROM THE SOUTH AND 660 FT FR THE EAST LINES OF SECTION 35 AND 36, T-25-S, R-26-E, EDDY COUNTY, NEW MEXICO, SAID 30 FT. ROADWAY BEING DESCRIBED MORE FULLY BY METES AND BOUNDS AS FOLLOWS:

BEGINNING AT A 1/2" REINF. BAR SET FOR THE SW CORNER OF THIS TRACT, SAME BEING THE SE CORNER OF A 400 FT. SQUARE PAD CENTERED ON SAID WELL NO. 1, FROM WHICH THE SE CORNER OF SAID SECTION 35 AND THE SW CORNER OF SAID SECTION 36 BEARS S. 00° 33' W. 460.00 FEET AND S. 89° 54' E. 460.00 FEET;

THENCE N. 00° 33' E. 30.00 FEET ALONG SAID WEST LINE OF 400 FT. SQUARE PAD TO A 1/2" REINF. BAR SET FOR THE NW CORNER OF THIS TRACT;

THENCE S. 89° 54' E. 1660.00 FEET TO A 1/2" REINF. BAR SET FOR THE NE CORNER OF THIS TRACT, IN THE WEST LINE OF COUNTY ROAD #748;

THENCE S. 00° 33' W. 30.00 FEET ALONG SAID WEST LINE OF COUNTY ROAD TO A 1/2" REINF. BAR SET FOR THE SE CORNER OF THIS TRACT;

THENCE N. 89° 54' W. 1660.00 FEET TO THE PLACE OF BEGINNING.

THIS IS TO CERTIFY THAT THIS SURVEY WAS MADE BY ME OR UNDER MY SUPERVISION ON THE GROUND AND THAT THIS PLAT IS A CORRECT REPRESENTATION THEREOF.

SCALE: 1" = 1000'

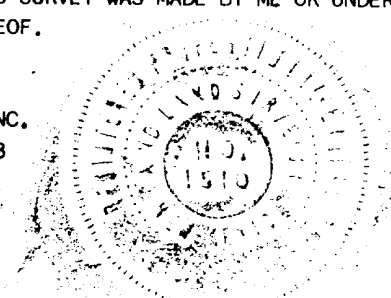
APRIL 4, 1985

SCHUMANN ENGINEERING CO., INC.

BOX 504 A/C 915 - 684 - 5548

MIDLAND, TEXAS 79702-0504

JOB NO. 50,077-C



Max A. Schumann Jr.

MAX A. SCHUMANN JR

REG. PROF. ENGINEER & LAND SURVEYOR