

UNITED STATES  
DEPARTMENT OF THE INTERIOR  
BUREAU OF LAND MANAGEMENT

APPLICATION FOR PERMIT TO DRILL, DEEPEN, OR PLUG BACK

1a. TYPE OF WORK

DRILL ☐

REENTER AND  
DEEEN ☒

PLUG BACK ☐

b. TYPE OF WELL

OIL  
WELL ☒

GAS  
WELL ☐

OTHER NOV 15 1985

SINGLE  
ZONE ☒

MULTIPLE  
ZONE ☐

2. NAME OF OPERATOR

HNG OIL COMPANY

3. ADDRESS OF OPERATOR

P. O. Box 2267, Midland, Texas 79702

4. LOCATION OF WELL (Report location clearly and in accordance with any State requirements.)\*

At surface

660' FSL & 660' FEL

At proposed prod. zone

Same

14. DISTANCE IN MILES AND DIRECTION FROM NEAREST TOWN OR POST OFFICE\*

16 miles south of Whites City, NM

15. DISTANCE FROM PROPOSED\*

LOCATION TO NEAREST  
PROPERTY OR LEASE LINE, FT.  
(Also to nearest drlg. unit line, if any)

660'

16. NO. OF ACRES IN LEASE

640

17. NO. OF ACRES ASSIGNED  
TO THIS WELL

40

18. DISTANCE FROM PROPOSED LOCATION\*  
TO NEAREST WELL, DRILLING, COMPLETED,  
OR APPLIED FOR, ON THIS LEASE, FT.

None

19. PROPOSED DEPTH

5600

20. ROTARY OR CABLE TOOLS

Rotary

21. ELEVATIONS (Show whether DF, RT, GR, etc.)

3324' GR

23.

PROPOSED CASING AND CEMENTING PROGRAM

SIZE OF HOLE	SIZE OF CASING	WEIGHT PER FOOT	SETTING DEPTH	QUANTITY OF CEMENT
14-3/8"	* 10-3/4"	40.5#	250	Circulated to surface with 83 sx. 700 sacks
10"	4-1/2"	10.5#	5600	

HNG plans to reenter and deepen the above-named well P&A 10/1/85 by Max Wilson, Inc.  
There will be no changes in the attached surface use plan.  
existing roads, pads, etc.

HNG plans to utilize

Pressure Control Program

A double blow-out preventor and rotating head with a choke manifold will be  
installed. The drill string will be equipped with a safety valve. All equipment  
will be tested to 3000 lbs. after installation.

Posted ID, NL  
12-3-85

IN ABOVE SPACE DESCRIBE PROPOSED PROGRAM: If proposal is to deepen or plug back, give data on present productive zone and proposed new productive  
zone. If proposal is to drill or deepen directionally, give pertinent data on subsurface locations and measured and true vertical depths. Give blowout  
preventer program, if any.

24.

SIGNED Betty Gildon Betty Gildon TITLE Regulatory Analyst

DATE 10/30/85

(This space for Federal or State office use)

PERMIT NO.

APPROVAL DATE

APPROVED BY

CONDITIONS OF APPROVAL, IF ANY:

TITLE

DATE

APPROVAL SUBJECT TO  
GENERAL REQUIREMENTS AND  
SPECIAL STIPULATIONS

\*See Instructions On Reverse Side

Title 18 U.S.C. Section 1001, makes it a crime for any person knowingly and willfully to make to any department or agency of the  
United States any false, fictitious or fraudulent statements or representations as to any matter within its jurisdiction.

# WELL LOCATION AND ACREAGE DEDICATION PLAT

Form C-102  
Supersedes C-128  
Effective 1-1-65

All distances must be from the outer boundaries of the Section.

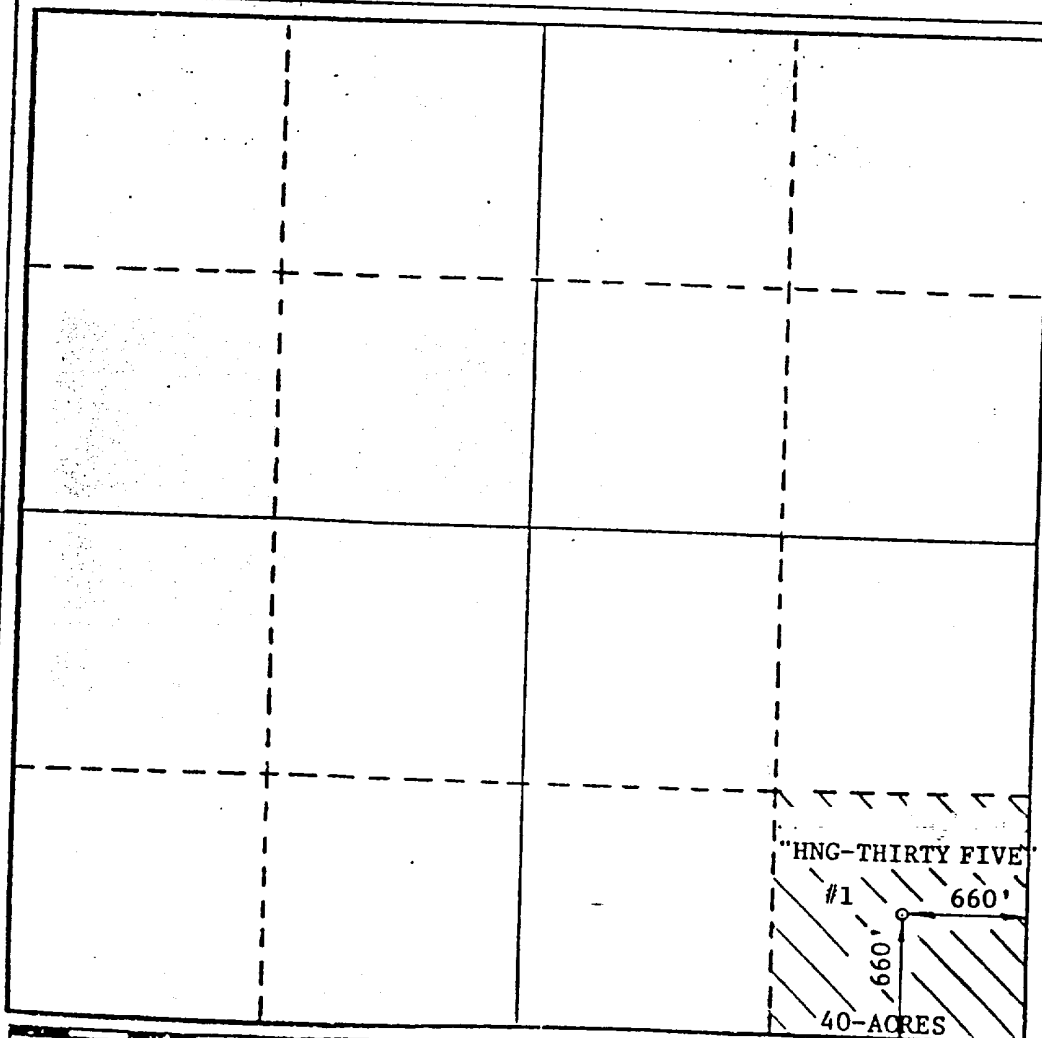
Operator <b>HNG OIL COMPANY</b>				Lease <b>HNG - THIRTY FIVE</b>		Well No. <b>1</b>
Unit Letter <b>"P"</b>	Section <b>35</b>	Township <b>-25-S</b>	Range <b>-26-E</b>	County <b>EDDY</b>		
Actual Footage Location of Well: <b>660</b> feet from the <b>SOUTH</b> line and <b>660</b> feet from the <b>EAST</b> line						
Ground Level Elev. <b>3324</b>	Producing Formation <b>Bone Springs</b>		Pool <b>WILDCAT</b>	Dedicated Acreage: <b>40</b> Acres		

1. Outline the acreage dedicated to the subject well by colored pencil or hachure marks on the plat below.
2. If more than one lease is dedicated to the well, outline each and identify the ownership thereof (both as to working interest and royalty).
3. If more than one lease of different ownership is dedicated to the well, have the interests of all owners been consolidated by communitization, unitization, force-pooling, etc?

☐ Yes ☐ No If answer is "yes," type of consolidation \_\_\_\_\_

If answer is "no," list the owners and tract descriptions which have actually been consolidated. (Use reverse side of this form if necessary.) \_\_\_\_\_

No allowable will be assigned to the well until all interests have been consolidated (by communitization, unitization, forced-pooling, or otherwise) or until a non-standard unit, eliminating such interests, has been approved by the Commission.



## CERTIFICATION

I hereby certify that the information contained herein is true and complete to the best of my knowledge and belief.

*Betty Gildon*  
Name

Betty Gildon

Position

Regulatory Analyst

Company

HNG OIL COMPANY

Date

October 30, 1985

I hereby certify that the well location shown on this plat was plotted from field notes of actual surveys made by me or under my supervision, and that the same is true and correct to the best of my knowledge and belief.

Date Surveyed

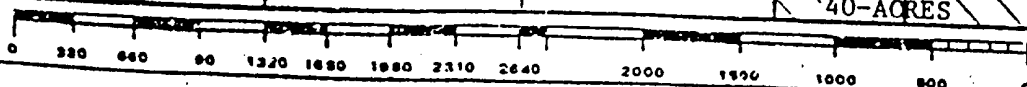
APRIL 4, 1985

Registered Professional Engineer and/or Land Surveyor

*Max A. Schumann Jr.*  
MAX A. SCHUMANN JR.

Certificate No.

4510



## MULTI-POINT SURFACE USE AND OPERATIONS PLAN

Max Wilson, Inc. No. 1 H N G Federal - 35  
660' FSL and 660' FEL  
T.25S, R.26E, N. M. P. M.  
Section 35: SE $\frac{1}{4}$ SE $\frac{1}{4}$   
Eddy County, New Mexico  
(Exploratory Well)

This plan is submitted with Form 9-331C, Application For Permit To Drill, covering the above described well. The purpose of this plan is to describe the location of the proposed well, the proposed construction activities and operations plan, the magnitude of necessary surface disturbance involved, and the procedures to be followed in rehabilitating the surface after completion of the operations, so that a complete appraisal can be made of the environmental effects associated with the operation.

### 1. EXISTING ROADS

- A. Exhibit A is a plat of the area on a scale of approximately 1 inch to 2 miles, showing the location of the proposed well site and roads in the vicinity. The proposed location is situated approximately 16 miles south of Whites City, New Mexico via the access route shown in blue on Exhibit A.

#### DIRECTIONS:

1. Go south from Whites City on NM 180 two miles to State Road 748.
2. Go five miles south to the intersection.
3. Turn back north approximately two miles.
4. At that intersection go right 2.3 miles to the next intersection.
5. Go 4.5 miles to the next intersection, turn south and travel 3/4 miles.
6. Location is approximately 1/4 mile west.

### 2. PLANNED ACCESS ROAD

- A. The proposed new access road will be approximately 1/4 mile long from point of origin to the edge of the pad. The road will lie in an east to west direction.
- B. The new road will be 10 feet in width and graded to caliche. The road will be on a flat surface so no drainage is anticipated. The new road is shown on Exhibit B.

### 3. LOCATION OF EXISTING WELLS

- A. The well locations in the vicinity of the proposed well are shown in Exhibit B.

### 4. LOCATION OF EXISTING AND / OR PROPOSED FACILITIES

- A. There are no producing wells within a 1 mile radius of location.
- B. In the event that the well is productive, the necessary production facilities will be installed on the drilling pad. If the well is productive of oil, a gas or diesel self-contained unit will be used to provide the necessary power. No power will be required if the well is productive of gas.

5. LOCATION AND TYPE OF WATER SUPPLY

- A. The water will be obtained from commercial sources and will be hauled to the location by truck over the existing and proposed roads shown in Exhibits A and B. The well will be drilled with a fresh water system.

6. SOURCES OF CONSTRUCTION MATERIALS

- A. Neither pad or road will be caliched.

7. METHODS OF HANDLING WASTE DISPOSAL

- A. Drill cuttings will be disposed of in the reserve pits.
- B. Drilling fluids will be allowed to evaporate in the reserve pits until the pits are dry.
- C. Water produced during operations will be drained to the pits.
- D. Oil produced during operations will be stored in tanks until sold.
- E. Current laws and regulations pertaining to the disposal of human waste will be complied with.
- F. Trash, waste paper, garbage and junk will be buried in a separate trash pit and covered with a minimum of 24 inches of dirt. All waste material will be contained to prevent scattering by the wind.
- G. All trash and debris will be buried or removed from the wellsite within 30 days after finishing drilling and / or completion operations.

8. ANCILLARY FACILITIES

- A. None required.

9. WELLSITE LAYOUT

- A. Exhibit C shows the dimensions of the well pad and reserve pits, and the location of major rig components.
- B. The ground surface at the drilling location is flat. No cutting will be required to level the pad area. Again, because of the caliche texture of the soil, the pad will not be covered.
- C. The reserve pits will not be plastic lined.
- D. The pad and pit area has been staked and flagged.

10. PLANS FOR RESTORATION OF THE SURFACE

- A. After finishing drilling and / or completion operations, all equipment and other material not needed for further operations will be removed. The location will be cleared of all trash and junk, to leave the wellsite in as aesthetically pleasing a condition as possible.
- B. Unguarded pits, if any, containing fluids will be fenced until they have been filled.
- C. If the proposed well is non-productive, all rehabilitation and / or vegetation requirements of the Bureau of Land Management and the Mineral Management Service will be complied with and will be accomplished as expeditiously as possible. All pits will be filled and leveled within 90 days after abandonment.

11. TOPOGRAPHY

- A. The wellsite and access route are located in a flat area.
- B. The top soil at the wellsite is caliche.
- C. The vegetation cover at the wellsite is very sparse, with greasewood, mesquite and miscellaneous weeds and grasses.
- D. No wildlife was observed, but it is likely that rabbits, lizards, insects and rodents traverse the area. The area is used for cattle grazing.
- E. There are no active rivers or streams in this area.
- F. The wellsite is located on federal surface.
- G. There is no evidence of any archeological, historical or cultural sites in the vicinity of the location.

12. OPERATOR'S REPRESENTATIVE

- A. The field representative responsible for assuring compliance with the approved surface use plan is:

Max M. Wilson  
Max Wilson, Inc.  
1004 Sunwest Centre  
500 North Main  
Roswell, NM 88201  
Phone: (505) 623-0507 (Office)  
(505) 623-0452 (Home)

13. CERTIFICATION

I hereby certify that I, or persons under my direct supervision, have inspected the proposed drillsite and access route; that I am familiar with the conditions which presently exist; that the statements made in this plan are, to the best of my knowledge, true and correct; and that the work associated with the operations proposed herein will be performed by Max Wilson, Inc. and its contractors and subcontractors in conformity with this plan and the terms and conditions under which it is approved.

4-9-85  
DATE

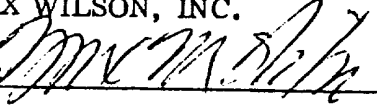
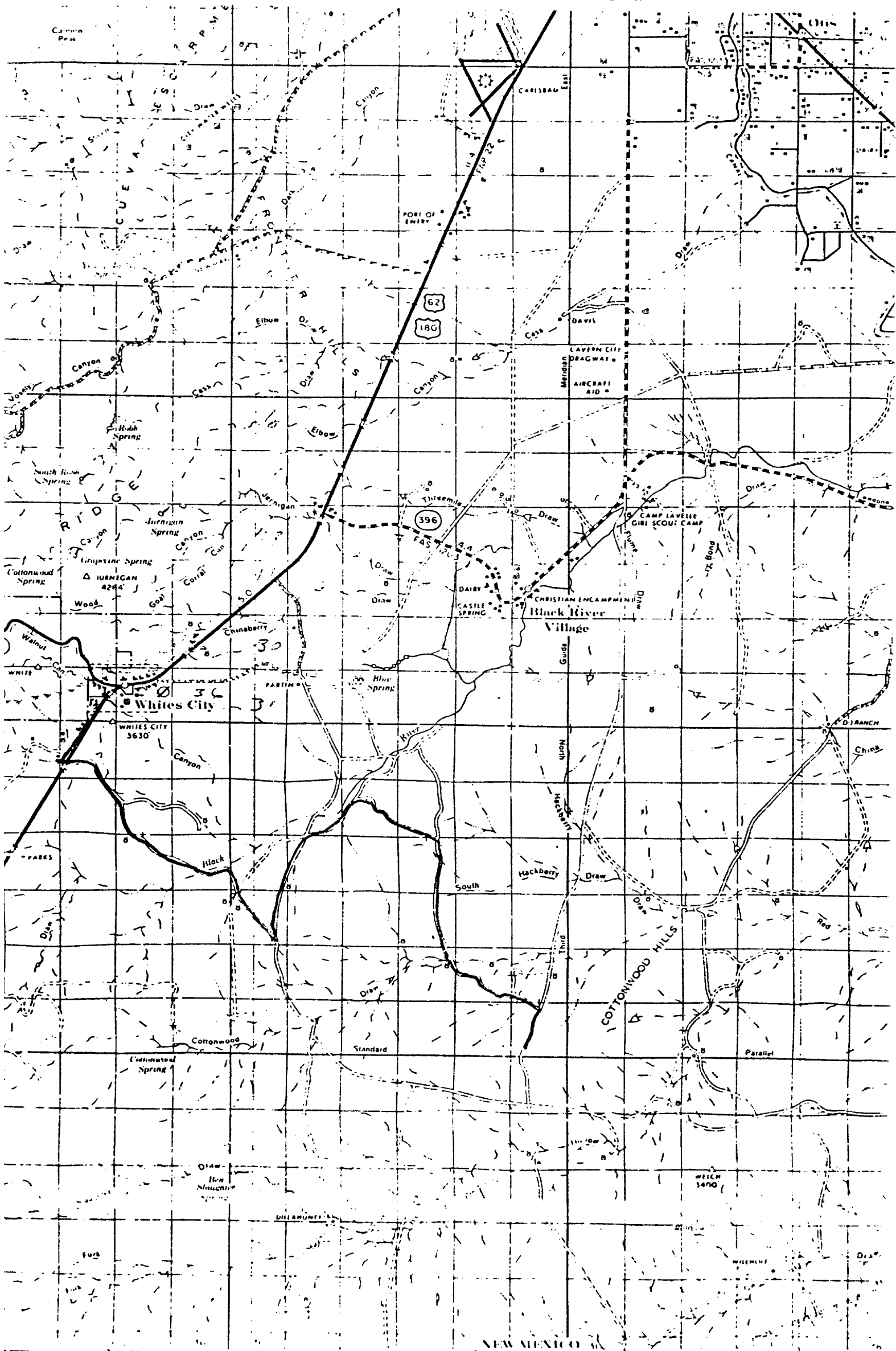
MAX WILSON, INC.  
BY:   
MAX M. WILSON

Exhibit A



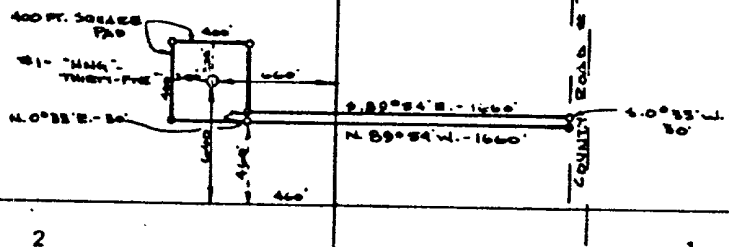
# Exhibit C



35

36

0- SET 1/2" REINF. BARS



FIELD NOTE DESCRIPTION OF A 30 FT. ROAD SURVEY FOR MAX. WILSON, INC. TO SERVE THE "HNG-THIRTY FIVE" LEASE, WELL NO. 1, LOCATED 660 FEET FROM THE SOUTH AND 660 FT FR THE EAST LINES OF SECTION 35 AND 36, T-25-S, R-26-E, EDDY COUNTY, NEW MEXICO, SAID 30 FT. ROADWAY BEING DESCRIBED MORE FULLY BY METES AND BOUNDS AS FOLLOWS:

BEGINNING AT A 1/2" REINF. BAR SET FOR THE SW CORNER OF THIS TRACT, SAME BEING THE SE CORNER OF A 400 FT. SQUARE PAD CENTERED ON SAID WELL NO. 1, FROM WHICH THE SE CORNER OF SAID SECTION 35 AND THE SW CORNER OF SAID SECTION 36 BEARS S. 00° 33' W. 460.00 FEET AND S. 89° 54' E. 460.00 FEET;

THENCE N. 00° 33' E. 30.00 FEET ALONG SAID WEST LINE OF 400 FT. SQUARE PAD TO A 1/2" REINF. BAR SET FOR THE NW CORNER OF THIS TRACT;

THENCE S. 89° 54' E. 1660.00 FEET TO A 1/2" REINF. BAR SET FOR THE NE CORNER OF THIS TRACT, IN THE WEST LINE OF COUNTY ROAD #748;

THENCE S. 00° 33' W. 30.00 FEET ALONG SAID WEST LINE OF COUNTY ROAD TO A 1/2" REINF. BAR SET FOR THE SE CORNER OF THIS TRACT;

THENCE N. 89° 54' W. 1660.00 FEET TO THE PLACE OF BEGINNING.

THIS IS TO CERTIFY THAT THIS SURVEY WAS MADE BY ME OR UNDER MY SUPERVISION ON THE GROUND AND THAT THIS PLAT IS A CORRECT REPRESENTATION THEREOF.

SCALE: 1" = 1000'

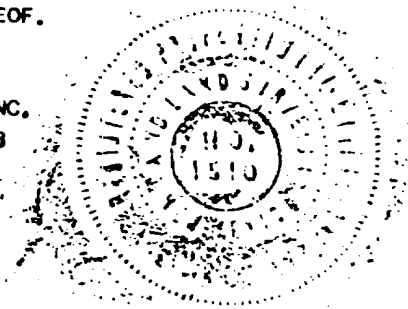
APRIL 4, 1985

SCHUMANN ENGINEERING CO., INC.

BOX 504 A/C 915 - 684 - 5548

MIDLAND, TEXAS 79702-0504

JOB NO. 50,077-C



*Max A. Schumann Jr.*  
MAX A. SCHUMANN JR  
REG. PROF. ENGINEER & LAND SURVEYOR



HNG OIL COMPANY  
APPLICATION FOR PERMIT TO DRILL  
HNG 35 Federal, Well No. 1 - NM 26870  
Sec. 35, T25S, R26E, Eddy County, NM

1. The geologic surface formation is Ochoan.
2. The estimated tops of important geologic markers are:

1. <u>Top Salt</u>	<u>800'</u>	6. <u>Bone Springs</u>	<u>5600'</u>
2. <u>Base Salt</u>	<u>1650'</u>	7. _____	
3. <u>Delaware Limestone</u>	<u>1900'</u>	8. _____	
4. <u>Delaware Sand</u>	<u>1950'</u>	9. _____	
5. <u>Cherry Canyon</u>	<u>3600'</u>	10. _____	
3. Depths at which oil, water, or gas bearing formations are expected to be encountered.  
Water: Approximately 150'  
Oil or Gas: 5500'  
Bone Springs: 5600'
4. Brief description of testing, logging, and coring programs.  
  
Run casing for production test.  
No cores. Open hole logs and GR-porosity & a resistivity log.
5. Any anticipated abnormal pressures or temperatures expected? Any potential hazards - H<sub>2</sub>S?  
  
No abnormal pressures or temperatures are anticipated. No potential H<sub>2</sub>S hazards.

1. (A) Pressure control equipment to be used.

Double BOP & Choke Manifold.  
Rotating preventer.

- (B) Pressure ratings (or API series).

3000# or 900 series

- (C) Testing procedures and frequency.

Test with plug in wellhead  
@ installation at surface casing point

- (D) Schematic Diagram.

See attached

2. Mud Program

Type and Characteristics

Salt water 9.7 - 10.2 35 vis 20cc water loss under surface.

Quantities and types of weighting material to be maintained

200 sx. Barite.

HNG OIL COMPANY  
HNG 35 Federal, Well No. 1 - NM 26870  
Sec. 35, T25S, R26E, Eddy County, NM

