

c/sx

30-015-15333

UNITED STATES  
DEPARTMENT OF THE INTERIOR

BUREAU OF LAND MANAGEMENT AMENDED REPORT \*\*

APPLICATION FOR PERMIT TO DRILL, DEEPEN, OR PLUG BACK

1a. TYPE OF WORK

DRILL ☒  
DEEPEN ☐  
PLUG BACK ☐

b. TYPE OF WELL

OIL ☒  
GAS ☐  
WELL ☐

SINGLE ☒  
ZONE ☐

MULTIPLE ☐  
ZONE ☐

2. NAME OF OPERATOR

Challenger Energy, Inc.

3. ADDRESS OF OPERATOR

P.O. Box 1262, Artesia, NM 88210

4. LOCATION OF WELL (Report location clearly and in accordance with any State requirements.)\*

2260' FSL & 2310' FWL of Section 22

At proposed prod. zone

(Unit K)

(NE 1/4 SW 1/4)

5. DISTANCE IN MILES AND DIRECTION FROM NEAREST TOWN OR POST OFFICE\*

16 miles south/southeast of Malaga, NM

6. DISTANCE FROM PROPOSED\*

LOCATION TO NEAREST  
PROPERTY OR LEASE LINE, FT.  
(Also to nearest drlg. unit line, if any)

330'

7. NO. OF ACRES IN LEASE

480

8. NO. OF ACRES ASSIGNED  
TO THIS WELL

40

9. DISTANCE FROM PROPOSED LOCATION\*

TO NEAREST WELL, DRILLING, COMPLETED,  
OR APPLIED FOR, ON THIS LEASE, FT.

1320'

10. PROPOSED DEPTH

6250'

11. ROTARY OR CABLE TOOLS

Rotary

12. ELEVATIONS (Show whether DF, RT, CR, etc.)

2895.9 CL

13. APPROX. DATE WORK WILL START\*

ASAP

PROPOSED CASING AND CEMENTING PROGRAM

SIZE OF HOLE	SIZE OF CASING	WEIGHT PER FOOT	SETTING DEPTH	QUANTITY OF CEMENT
11" or 12"	8 5/8"	23#	400 (top of Rustler)	Circulate to surface
7 7/8"	5 1/2"	15.5#	6250'	Sufficient to fill to base of salt.

Actual 5 1/2 production casing setting depth to be determined after logging operations are evaluated. Equivalent or adequate weights and grades of casing may be substituted at time casing is run. Producing zones will be perforated and stimulated as necessary.

Mud Program: F.W. Gel/LCM to 400', Brine to T. D.

BOP Program: 3000# W.P., Double ran type preventer will be in use while drilling below surface casing. See Exhibit "B".

NOTE: See 9A under Multi-Point Surface Use & Operations Plan for an additional Amendment.

14. OTHER SPACE DESCRIBE PROPOSED PROGRAM: If proposal is to deepen or plug back, give data on present productive zone and proposed new productive zone. If proposal is to drill or deepen directionally, give pertinent data on subsurface locations and measured and true vertical depths. Give blowout preventer program, if any.

SIGNED

*Chris Zuba*

TITLE

Sec./Treas.

DATE June 12, 1985

(This space for Federal or State office use)

PERMIT NO.

APPROVAL DATE

APPROVED BY

*Mark Hauer*

TITLE

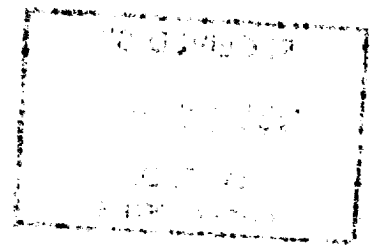
DATE

7-11-85

CONDITIONS OF APPROVAL, IF ANY:

\*See Instructions On Reverse Side

JUN 14 1985  
POSTED  
JUL 19 1985



**NEW MEXICO OIL CONSERVATION COMMISSION  
WELL LOCATION AND ACREAGE DEDICATION PLAT**

Form C-102  
Supersedes C-128  
Effective 1-1-65

All distances must be from the outer boundaries of the Section.

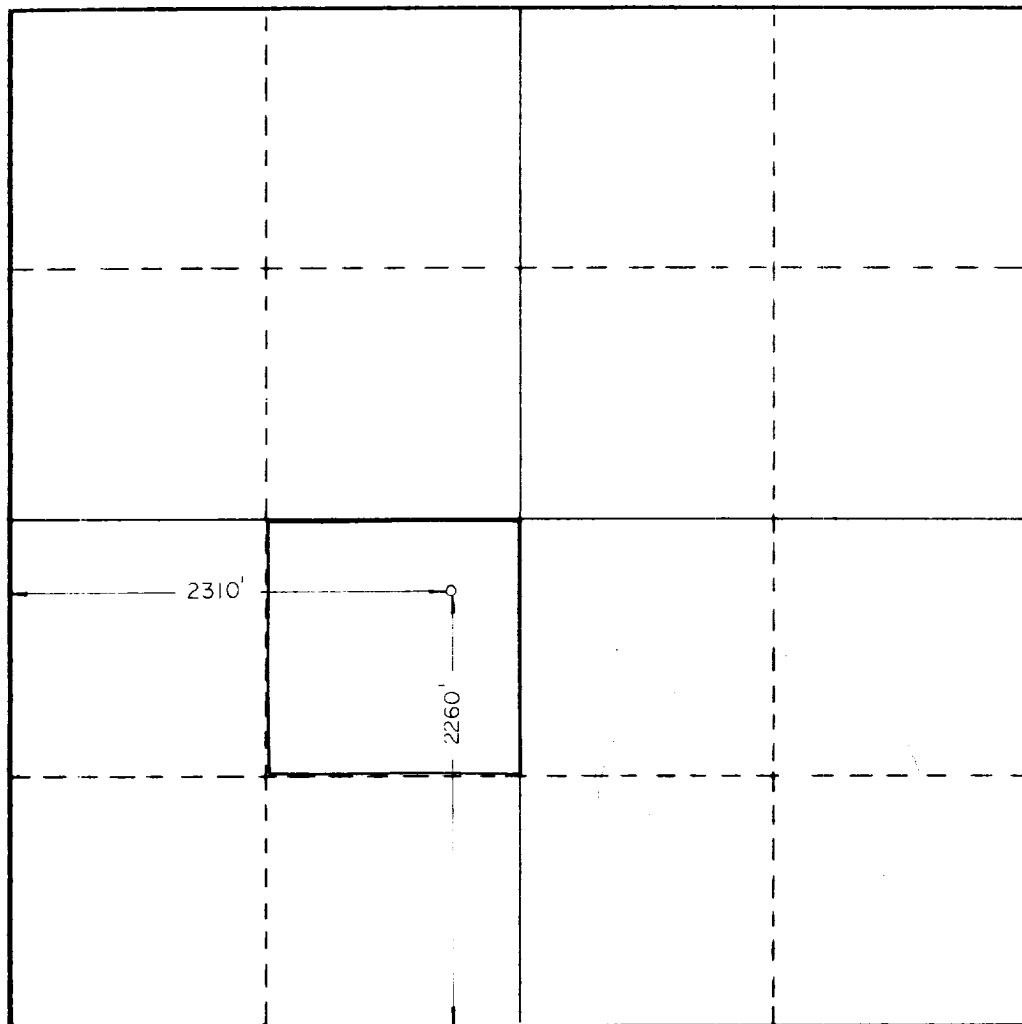
Operator <b>CHALLENGER ENERGY, INC.</b>			Lease <b>MOBIL FED.</b>		Well No. <b>6</b>
Unit Letter <b>K</b>	Section <b>22</b>	Township <b>26S</b>	Range <b>29E</b>	County <b>EDDY</b>	
Actual Footage Location of Well: <b>2260</b> feet from the <b>SOUTH</b> line and <b>2310</b> feet from the <b>WEST</b> line					
Ground Level Elev. <b>2895.7</b>	Producing Formation <b>Delaware</b>		Pool <b>Brushy Draw-Delaware</b>		Dedicated Acreage: <b>40</b> Acres

1. Outline the acreage dedicated to the subject well by colored pencil or hatchure marks on the plat below.
2. If more than one lease is dedicated to the well, outline each and identify the ownership thereof (both as to working interest and royalty).
3. If more than one lease of different ownership is dedicated to the well, have the interests of all owners been consolidated by communitization, unitization, force-pooling, etc?

☐ Yes    ☐ No    If answer is "yes," type of consolidation \_\_\_\_\_

If answer is "no," list the owners and tract descriptions which have actually been consolidated. (Use reverse side of this form if necessary.) \_\_\_\_\_

No allowable will be assigned to the well until all interests have been consolidated (by communitization, unitization, forced-pooling, or otherwise) or until a non-standard unit, eliminating such interests, has been approved by the Commission.



**CERTIFICATION**

*I hereby certify that the information contained herein is true and complete to the best of my knowledge and belief.*

Craig Huber

Name

Position

Sec/Treas.

Company

Challenger Energy, Inc.

Date

June 13, 1985

*I hereby certify that the well location shown on this plat was plotted from field notes of actual surveys made by me or under my supervision, and that the same is true and correct to the best of my knowledge and belief.*

Date Surveyed

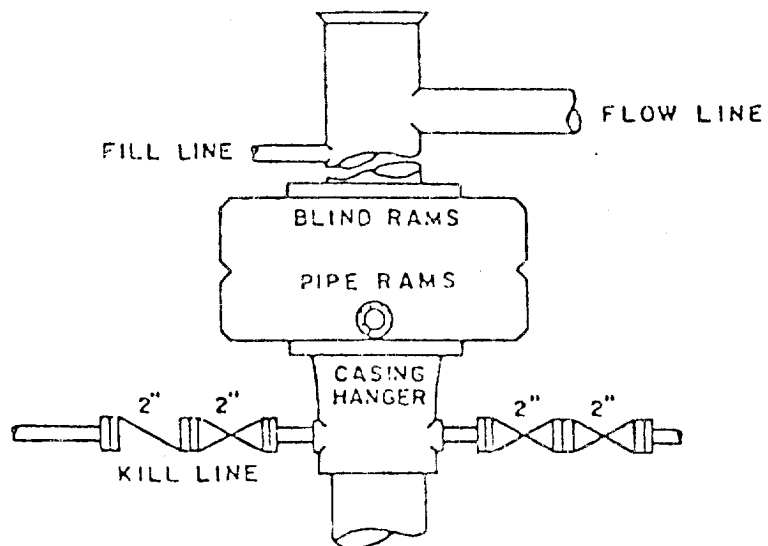
6/12/85

Registered Professional Engineer  
and/or Land Surveyor

Certificate No. **JOHN W. WEST,**

**676**

**RONALD J. EIDSON, 3239**



BOP STACK

3000 PSI WORKING PRESSURE

DEPTH INTERVAL

FROM 8-5/8" CASING SEAT TO TOTAL DEPTH

*Exhibit B*

BOP ARRANGEMENT

CHALLENGER ENERGY, INC.  
Mobil "22" Federal #6  
2310' FSL and 2310' FWL  
Sec. 22, T-26S, R-29E  
Eddy County, New Mexico

In conjunction with Form 3160-3, Application for Permit to Drill subject well, Challenger Energy, Inc. submits the following ten items of pertinent information in accordance with BLM requirements.

1. The geologic surface formation is sandy alluvium.
2. The estimated tops of geologic markers are as follows:

Rustler Anhydrite	350'
Base Salt	2750'
Delaware Sand	2960'
Cherry Canyon	3860'
Brushy Canyon	5460'

3. The estimated depths at which anticipated water, oil or gas formations are expected to be encountered:

Oil: 5000'

4. Proposed Casing Program: See Form 3160-3
5. Pressure Control Equipment: See Form 3160-3 and Exhibit B
6. Mud Program: See Form 3160-3
7. Auxiliary Equipment: Sub with full-opening valve on floor, drill pipe connection.
8. Testing, Logging and Coring Program:

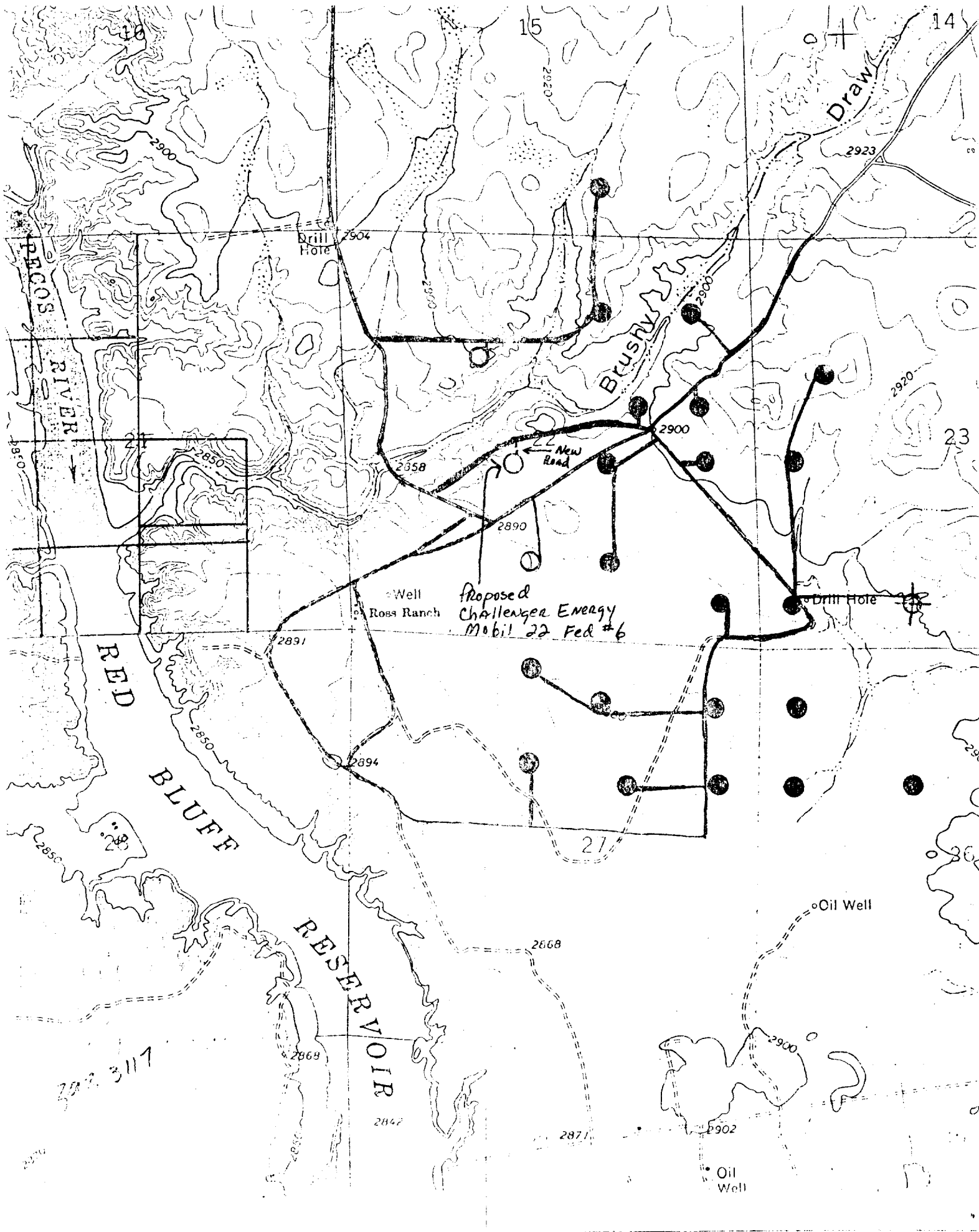
Samples: 2700' to TD.

DST's: As Warranted.

Coring: None.

Logging: CND TD to 2900', DLL TD to 2900', and Gamma Ray TD to Surface.

9. No abnormal pressures or temperatures are anticipated.
10. Anticipated Starting date: As soon as possible after approval. (Prior to August 8, 1985)



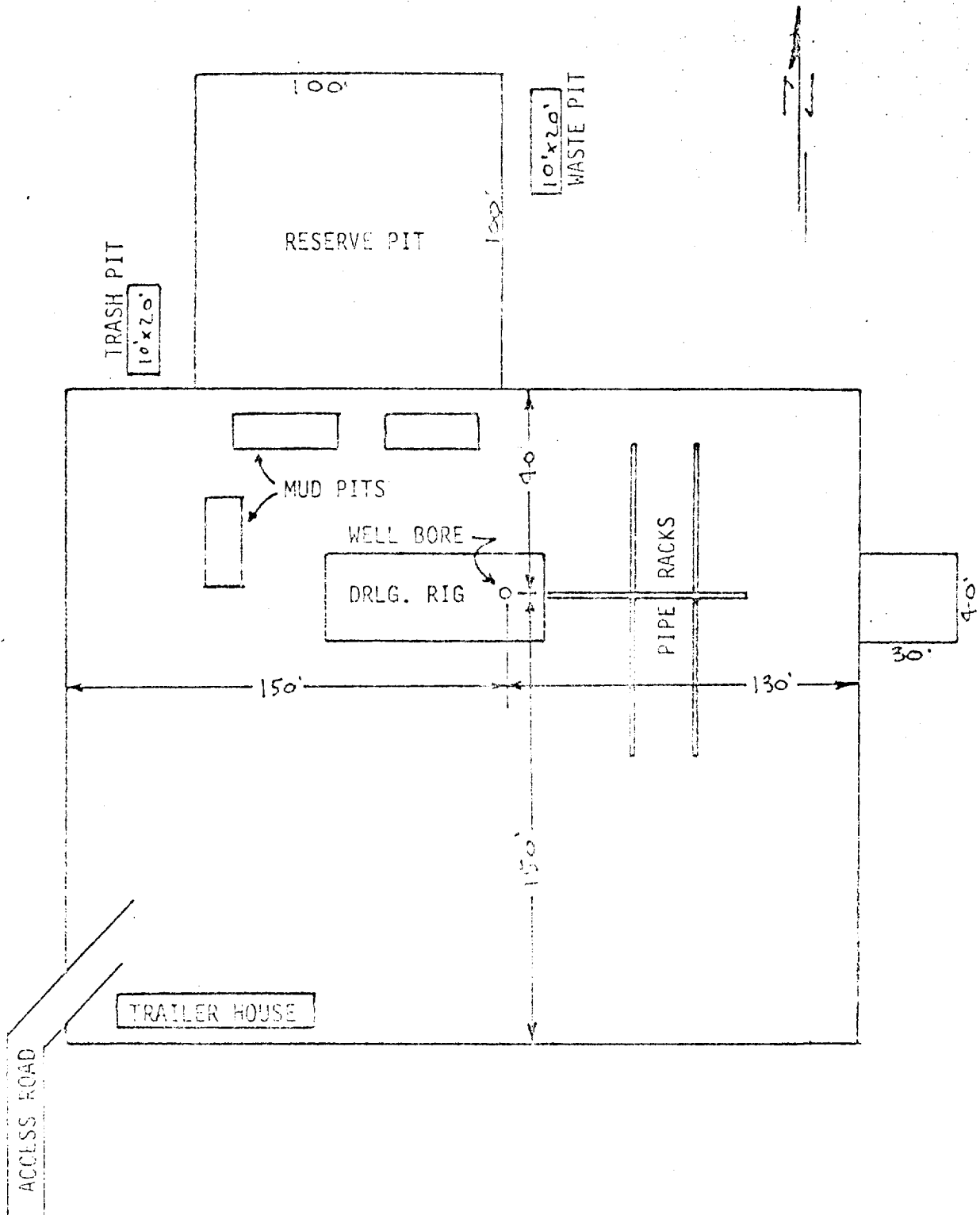


EXHIBIT "C"  
 Challenger Energy, INC.  
 Mobil Federal "22" #1  
 Drilling Rig Layout