

NM Oil CONS. COMMISSION
Drawer **UNITED STATES**
DEPARTMENT OF THE INTERIOR
BUREAU OF LAND MANAGEMENT
GEOLOGICAL SURVEYSUBMIT 7 "REPLICATE"
(Other instructions on
reverse side)30-015-25351
Form approved.
Budget Bureau No. 42-R1425.

APPLICATION FOR PERMIT TO DRILL, DEEPEN, OR PLUG BACK

1a. TYPE OF WORK

DRILL ☒DEEPEN ☐PLUG BACK ☐

b. TYPE OF WELL

OIL
WELL ☒GAS
WELL ☐OTHER ☐

2. NAME OF OPERATOR

Texaco Producing Inc. ✓

3. ADDRESS OF OPERATOR

P. O. Box 728, Hobbs, New Mexico 88240

4. LOCATION OF WELL (Report location clearly and in accordance with State requirements)

At surface

990' FNL & 880' FEL of Section

At proposed prod. zone

990' FNL & 880' FEL of Section

14. DISTANCE IN MILES AND DIRECTION FROM NEAREST TOWN OR POST OFFICE*

16 miles southeast of Malaga, New Mexico

15. DISTANCE FROM PROPOSED*

LOCATION TO NEAREST
PROPERTY OR LEASE LINE, FT.
(Also to nearest drig. unit line, if any)

342'

18. DISTANCE FROM PROPOSED LOCATION*

TO NEAREST WELL, DRILLING, COMPLETED,
OR APPLIED FOR, ON THIS LEASE, FT.

1st Well

21. ELEVATIONS (Show whether DF, RT, GR, etc.)

2916' GR

23.

PROPOSED CASING AND CEMENTING PROGRAM

| SIZE OF HOLE | SIZE OF CASING | WEIGHT PER FOOT | SETTING DEPTH | QUANTITY OF CEMENT |
|--------------|----------------|-----------------|---------------|----------------------------|
| 24" | 20" | 94# | 40' | Redimix to Surface |
| 17-1/2" | 13-3/8" | 48# | 500' | 600 sacks CIRCULATE |
| 12-1/2" | 8-5/8" | 24# | 3000' | 1250 sacks |
| 7-7/8" | 5-1/2" | 15.5# | 5600' | 800 sacks |

Surface Casing - 13-3/8": 600 sacks Class "H" w/2% CaCl.Intermediate Casing - 8-5/8": 1000 sacks Light Weight w/15# salt and 1/4# flocele followed by 250 sacks Class "H" w/1/4# flocele.Production Casing - 5-1/2": 550 sacks Light Weight w/1/4# flocele followed by 250 sacks Class "H" w/1/4# flocele.

IN ABOVE SPACE DESCRIBE PROPOSED PROGRAM: If proposal is to deepen or plug back, give data on present productive zone and proposed new productive zone. If proposal is to drill or deepen directionally, give pertinent data on subsurface locations and measured and true vertical depths. Give blowout preventer program, if any.

24.

SIGNED

W.A. Baker II

TITLE

W. A. Baker, II
Dist. Drilling Manager

DATE

7/15/85

(This space for Federal or State office use)

PERMIT NO.

APPROVAL DATE

APPROVED BY

TITLE

DATE

7-25-85

CONDITIONS OF APPROVAL, IF ANY:

*See Instructions On Reverse Side

APPROVAL SUBJECT TO
GENERAL REQUIREMENTS AND
SPECIAL STIPULATIONS
ATTACHED

All distances must be from the outer boundaries of the Section.

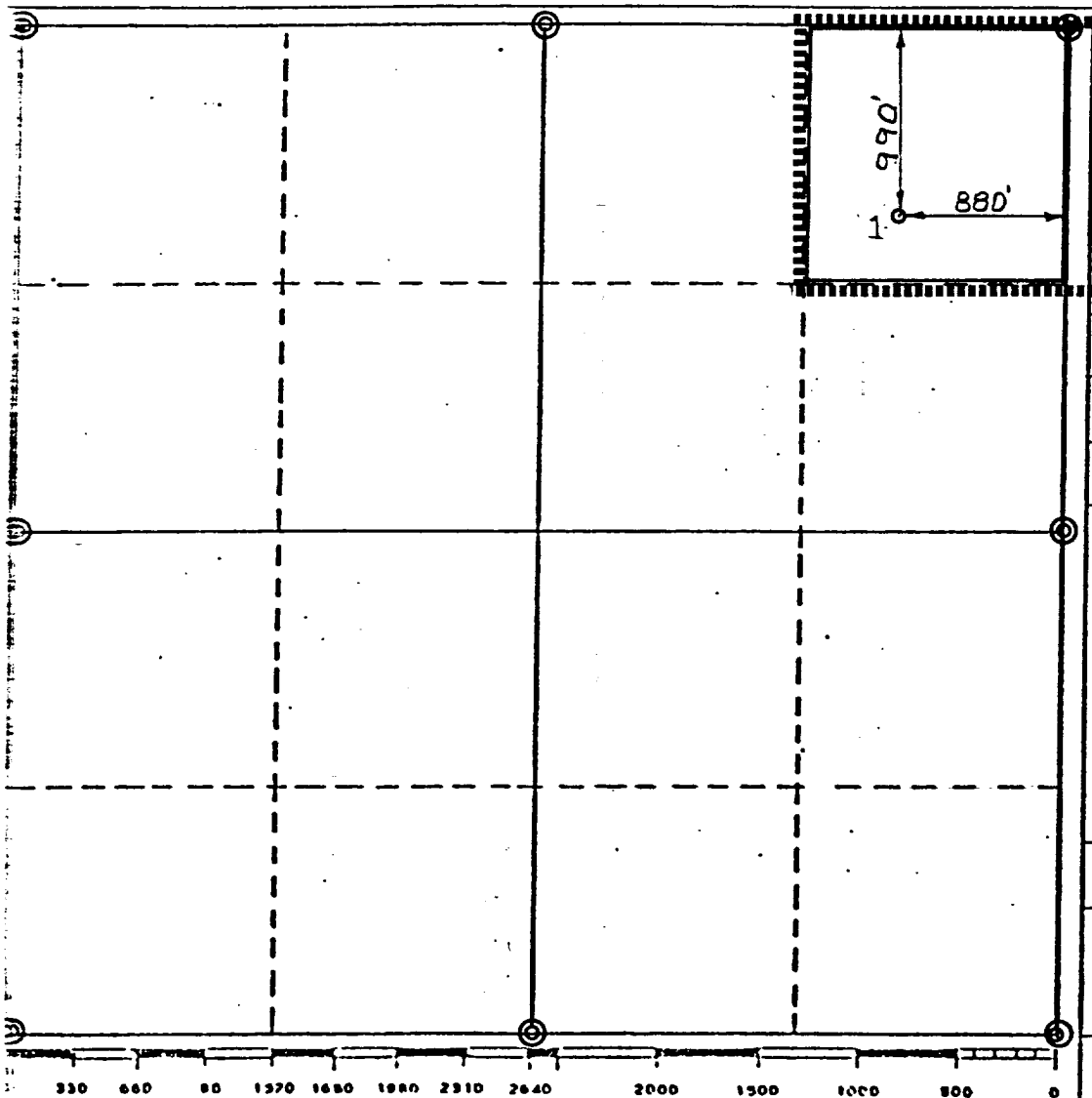
| | | | | |
|--|--|------------------------------|--------------------------------|----------------|
| Operator Texaco Producing Inc. | | Lease "BD" Federal | | Well No. 1 |
| Unit Letter A | Section 26 | Township 26-S | Range 29-E | County Eddy |
| Actual Footage Location of Well: 990 feet from the north line and 880 feet from the east line | | | | |
| Ground Level Elev. 2916' | Producing Formation Cherry Canyon Pay | Pool Brushy Draw Delaware | Dedicated Acreage: 40 Acres | |

1. Outline the acreage dedicated to the subject well by colored pencil or hachure marks on the plat below.
2. If more than one lease is dedicated to the well, outline each and identify the ownership thereof (both as to working interest and royalty).
3. If more than one lease of different ownership is dedicated to the well, have the interests of all owners been consolidated by communitization, unitization, force-pooling, etc?

☐ Yes ☐ No If answer is "yes," type of consolidation _____

If answer is "no," list the owners and tract descriptions which have actually been consolidated. (Use reverse side of this form if necessary.) _____

No allowable will be assigned to the well until all interests have been consolidated (by communitization, unitization, forced-pooling, or otherwise) or until a non-standard unit, eliminating such interests, has been approved by the Division.



CERTIFICATION

I hereby certify that the information contained herein is true and complete to the best of my knowledge and belief.

W. A. Baker, II

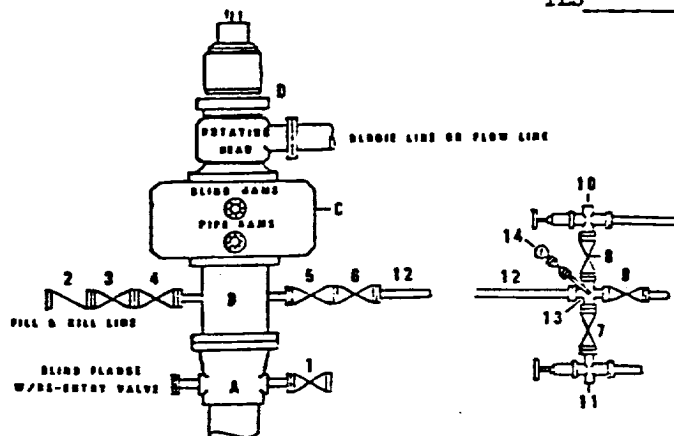
Name
W. A. Baker, II
Position
District Drilling Manager
Company
Texaco Inc.
Date
July 16, 1985

I hereby certify that the well location shown on this plat was plotted from field notes of actual surveys made by me or under my supervision, and that the same is true and correct to the best of my knowledge and belief.

Date Surveyed
6-20-85
Registered Professional Engineer
and/or Land Surveyor
B. L. Eiland
B. L. Eiland
Certificate No. 10000

DRILLING CONTROL
CONDITION II-B 3000 WP
FOR AIR DRILLING OR
WHERE YATES AIR BLOWS ARE EXPECTED

H₂S TRIM REQUIRED
 YES _____ NO _____



DRILLING CONTROL

MATERIAL LIST - CONDITION II - B
FOR AIR DRILLING

- | | |
|---------------|---|
| A | Texaco Wellhead |
| B | 3000# W.P. drilling spool with a 2" minimum flanged outlet for kill-line and 3" minimum flanged outlet for choke line |
| C | 3000# W.P. Dual ram type preventer, hydraulic operated with 1" steel, 3000# W.P. control lines (where sub-structure height is adequate, 2-3000# W.P. single ram type preventers may be utilized.) |
| D | Rotating Head and extended Blowie Line. |
| 1,3,4, 7,8 | 2" minimum 3000# W.P. flanged full opening steel gate valve, or Halliburton Lo Torc Plug valve. |
| 2 | 2" minimum 3000# W.P. back pressure valve |
| 5,6,9 | 3" minimum 3000# W.P. flanged full opening steel gate valve, or Halliburton Lo Torc Plug valve. |
| 12 | 3" minimum schedule 80, Grade "B", seamless line pipe |
| 13 | 2" minimum x 3" minimum 3000# W.P. flanged cross |
| 10, 11 | 2" minimum 3000# W.P. adjustable choke bodies |
| 14 | Cameron Mud Gauge or equivalent (location optional in choke line.) |



| | | | |
|---|------|----------|----------|
| <div style="display: flex; justify-content: space-between; align-items: center;"> <div style="text-align: center;">  </div> <div style="text-align: center;"> TEXACO, INC. PRODUCING DEPARTMENT-US (CENT) MIDLAND, TEXAS </div> <div style="text-align: center;">  </div> </div> | | | |
| SCALE | DATE | DWT. NO. | Dwg. NO. |
| DRAWN BY | | | |
| CHECKED BY | | | |
| APPROVED BY | | | |

EXHIBIT C

ANTICIPATED WATER, OIL, GAS AND
MINERAL BEARING FORMATIONS

Well: "BD" Federal No. 1
Location: 990' FNL & 880' FEL, Sec. 26, T-26-S, R-29-E
County: Eddy State: New Mexico
Elevation: 2916' GL Proposed TD: 5600'
Surface Formation: Quaternary Allurium

(1 & 2)

FORMATION TOPS

| <u>Depth</u> | <u>Formation</u> | <u>Oil</u> | <u>Gas</u> | <u>Water</u> | <u>Minerals</u> |
|--------------|----------------------|------------|------------|--------------|-----------------|
| 0' | Quaternary Allurium | | | | |
| 130' | Dewey Lake Red Beds | | | x | |
| 410' | Rustler Dol. & Anhy. | | | x | |
| 820' | Salado Salt | | | x | |
| 1230' | Castile Anhy. | | | x | |
| 3030' | Lamar | | | x | |
| 3075' | Ramsey | x | x | | |
| 3125' | Olds | x | x | | |
| 3950' | Cherry Canyon | x | x | | |
| 5175' | Brushy Canyon | x | x | | |

(3) Blow out preventer will be installed after surface pipe is set at 500'. Testing frequency every 8 hours.

(5)

MUD PROGRAM

| <u>Depth</u> | <u>Type</u> | <u>Weight</u> | <u>Viscosity</u> | <u>Water Loss</u> | <u>% (Raw Crude Diesel Oil)</u> |
|--------------|-------------|---------------|------------------|----------------------------------|---------------------------------|
| 0-400' | Spud Mud | 8.4-8.8 | 29 | | |
| 400-3000' | Brine Water | 10.0 | 32 | Additives for hole control only. | |
| 3000'-TD | Fresh Water | 8.4 | 33 | | |

(6) No cores are to be taken but GR-CAL-CNL-FDC and GR-DLL-MSFL logs will be run.

(7) No abnormal pressures or temperatures or hazardous gases are anticipated to be encountered in this well.

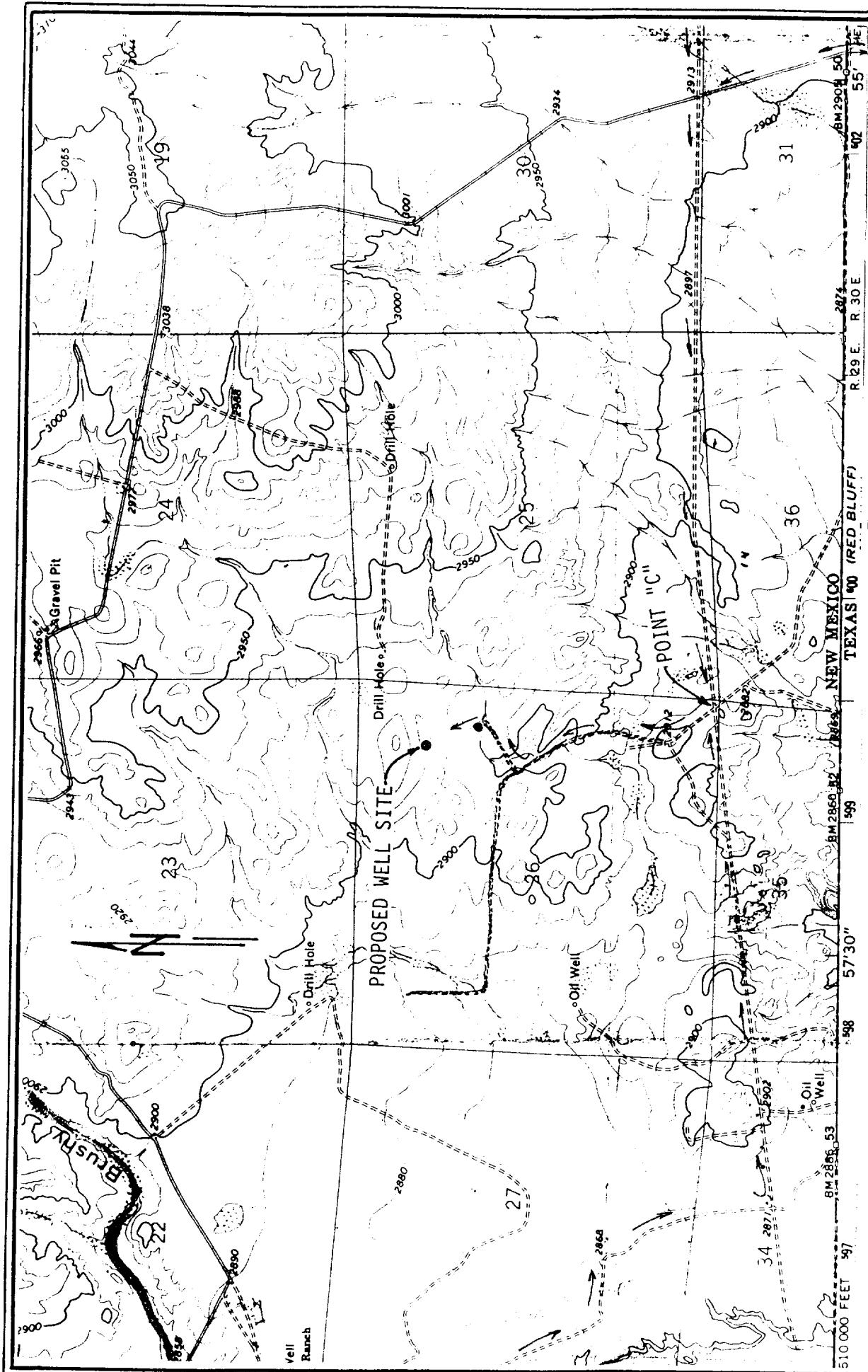


EXHIBIT "D"

TEXACO INC.
 BD FEDERAL WELL NO. 1
 990' FNL & 880' FEL SEC. 26, T. 26 S., R. 29 E.
 EDDY COUNTY, N.M.
 TOPO PLAT

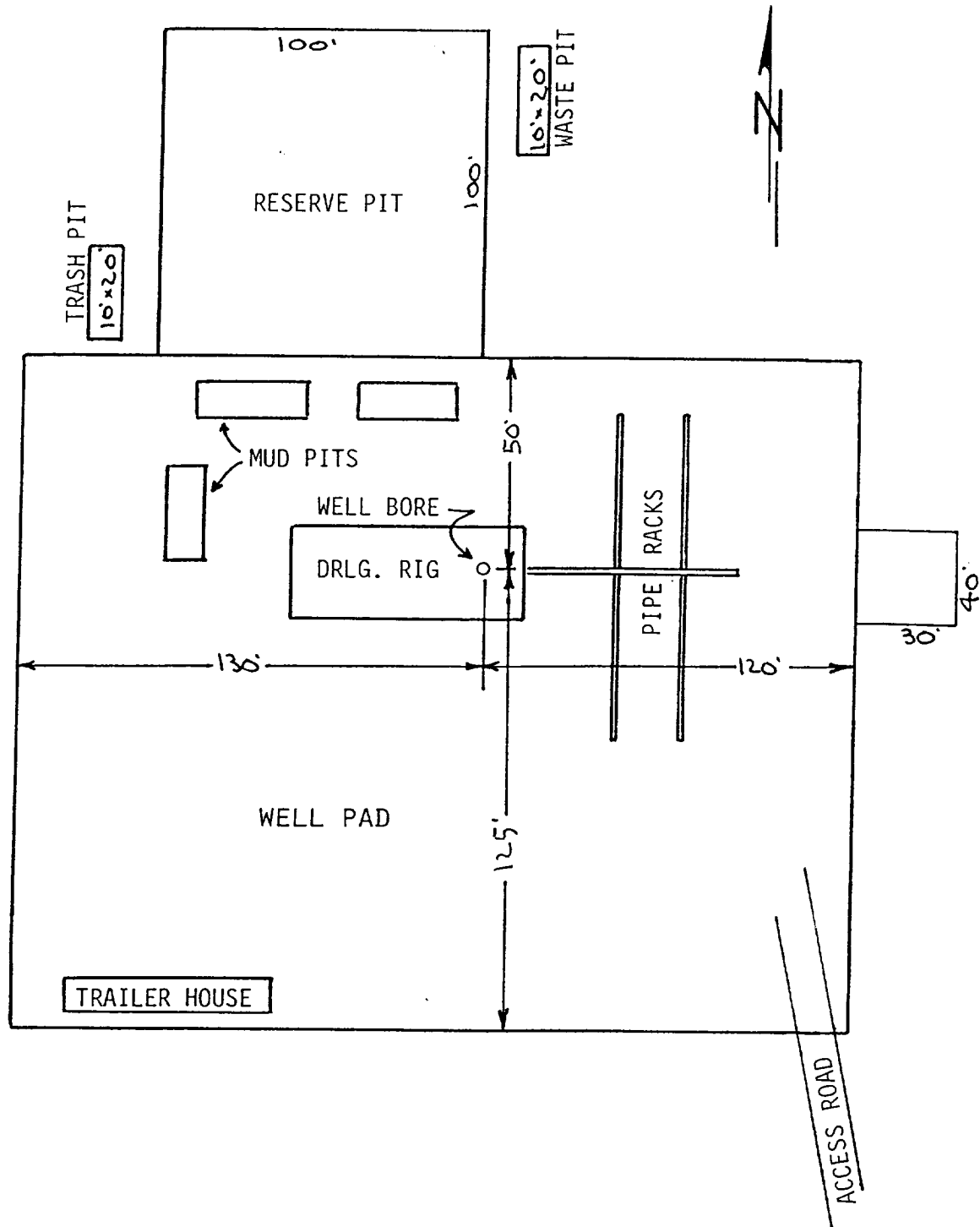


EXHIBIT "C"

TEXACO INC.
 BD FEDERAL WELL NO. 1
 DRILLING RIG LAYOUT
 SCALE: None