

RECEIVED BY
(November 1983)
(formerly 9-331C)

AUG 30 1985

O.C.D.

NM OIL CONS. COMMISSION
Drawer DD
Alamosa, NM 88210

UNITED STATES
DEPARTMENT OF THE INTERIOR
BUREAU OF LAND MANAGEMENT

30-015-25388
Form approved.
Budget Bureau No. 1004-0136
Expires August 31, 1985

5. LEASE DESIGNATION AND SERIAL NO.

NM-27647

6. IF INDIAN, ALLOTTEE OR TRIBE NAME

7. UNIT AGREEMENT NAME

8. FARM OR LEASE NAME

Exxon '31' Federal

9. WELL NO.

1

10. FIELD AND POOL, OR WILDCAT

Wildcat-Delaware

11. SEC., T., R., M., OR BLEK.
AND SURVEY OR AREA

Sec. 31, T25S, R30E

12. COUNTY OR PARISH 13. STATE

Eddy

N.M.

1A. TYPE OF WORK

DRILL ☒

DEEPEN ☐

PLUG BACK ☐

B. TYPE OF WELL

OIL
WELL ☒

GAS
WELL ☐

OTHER

SINGLE
ZONE ☒

MULTIPLE
ZONE ☐

2. NAME OF OPERATOR

Rhymes Drilling Company, Inc.

3. ADDRESS OF OPERATOR

P.O. Box 729, Roswell, New Mexico 88201

4. LOCATION OF WELL (Report location clearly and in accordance with any State requirements.)
At surface

1980' FNL & 1980' FWL, SE/4 NW/4, Unit letter F

At proposed prod. zone

Same

14. DISTANCE IN MILES AND DIRECTION FROM NEAREST TOWN OR POST OFFICE*

10 air miles southeast of Malaga, New Mexico

15. DISTANCE FROM PROPOSED*

LOCATION TO NEAREST
PROPERTY OR LEASE LINE, FT.
(Also to nearest drlg. unit line, if any)

1980'

16. NO. OF ACRES IN LEASE

561.18

17. NO. OF ACRES ASSIGNED
TO THIS WELL

40

18. DISTANCE FROM PROPOSED LOCATION*
TO NEAREST WELL, DRILLING, COMPLETED,
OR APPLIED FOR, ON THIS LEASE, FT.

1220' SW

19. PROPOSED DEPTH

4000'

20. ROTARY OR CABLE TOOLS

Rotary

21. ELEVATIONS (Show whether DF, RT, GR, etc.)

3096.5' GR

22. APPROX. DATE WORK WILL START*

September 1, 1985

23.

PROPOSED CASING AND CEMENTING PROGRAM

SIZE OF HOLE	SIZE OF CASING	WEIGHT PER FOOT	SETTING DEPTH	QUANTITY OF CEMENT
12 1/4"	8 5/8"	24.0#	750'±	520 sx(Circulate)
7 7/8"	4 1/2"	10.5#	4000'±	200 sx(Sufficient to isolate all oil, gas, and water zones)

Proposed plans are to drill through the Delaware formation and test for possible commercial production of oil and gas in the Delaware and intermediate formations.

BOP sketch is attached.

Designation of Operator from Exxon(lessee), will be filed under a separate cover.

IN ABOVE SPACE DESCRIBE PROPOSED PROGRAM: If proposal is to deepen or plug back, give data on present productive zone and proposed new productive zone. If proposal is to drill or deepen directionally, give pertinent data on subsurface locations and measured and true vertical depths. Give blowout preventer program, if any.

24.

SIGNED

Henry W. Franklin

TITLE

Agent

DATE August 21, 1985

(This space for Federal or State office use)

PERMIT NO.

APPROVAL DATE

Orig: Sec: 1001-15-1, 15-2

APPROVED BY

TITLE

DATE

8-29-85

CONDITIONS OF APPROVAL, IF ANY:

APPROVAL SUBJECT TO
GENERAL REQUIREMENTS AND
SPECIAL STIPULATIONS

*See Instructions On Reverse Side

Title 18 U.S.C. Section 1001, makes it a crime for any person knowingly and willfully to make to any department or agency of the United States any false, fictitious or fraudulent statements or representations as to any matter within its jurisdiction.

MEXICO OIL CONSERVATION COMMISSION
WELL LOCATION AND ACREAGE DEDICATION PLAT

Form C-102
Supersedes C-128
Effective 1-1-65

All distances must be from the outer boundaries of the Section

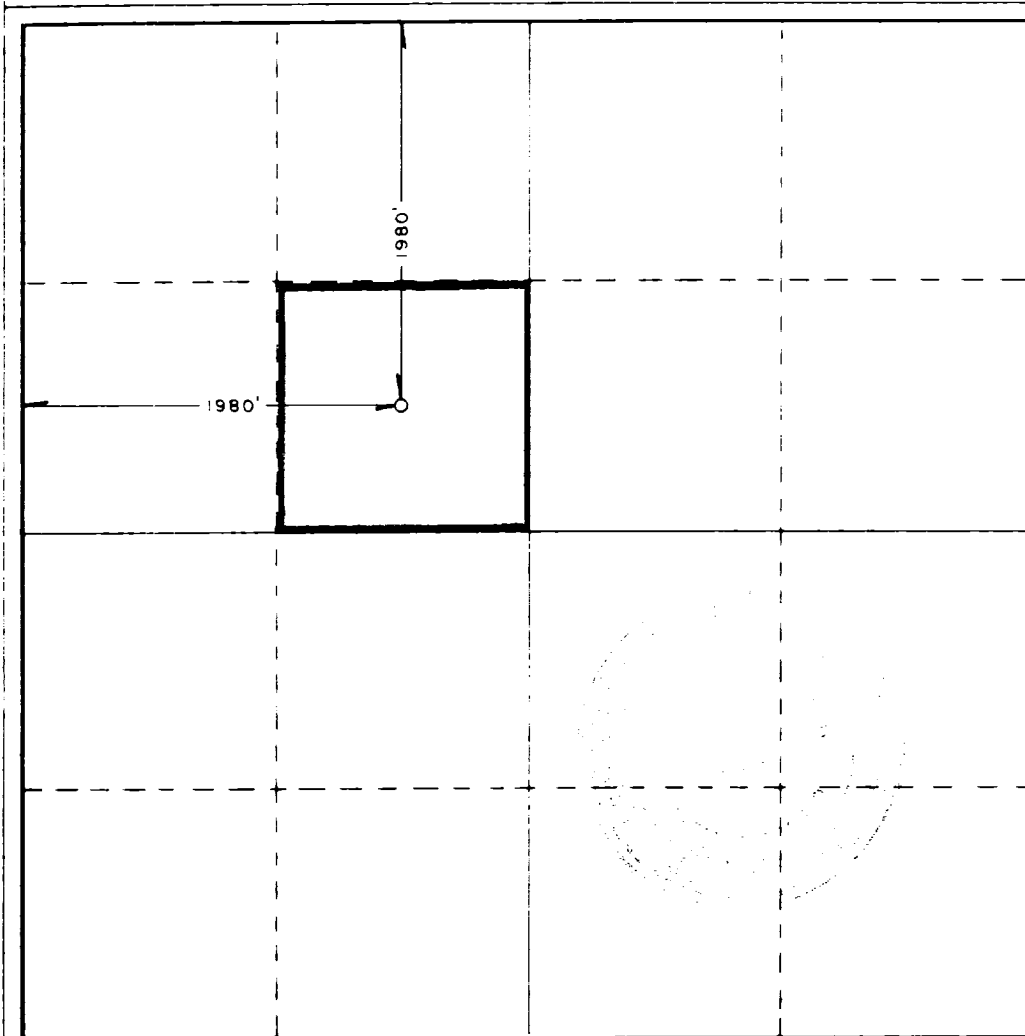
Operator RYMES - DRILLING CO., INC.		Lease EXXON "31" FED.		Well No. 1
Tract Letter F	Section 31	Township 25 SOUTH	Range 30 EAST	County EDDY
Actual Footage Location of Well: 1980 feet from the NORTH line and 1980 feet from the WEST line				
Ground Level Elev. 3996.5'	Producing Formation Delaware	Pool Wildcat	Dedicated Acreage: 40 Acres	

1. Outline the acreage dedicated to the subject well by colored pencil or hachure marks on the plat below.
2. If more than one lease is dedicated to the well, outline each and identify the ownership thereof (both as to working interest and royalty).
3. If more than one lease of different ownership is dedicated to the well, have the interests of all owners been consolidated by communitization, unitization, force-pooling, etc?

☐ Yes ☐ No If answer is "yes," type of consolidation _____

If answer is "no," list the owners and tract descriptions which have actually been consolidated. (Use reverse side of this form if necessary.) _____

No allowable will be assigned to the well until all interests have been consolidated (by communitization, unitization, forced-pooling, or otherwise) or until a non-standard unit, eliminating such interests, has been approved by the Commission.



CERTIFICATION

I hereby certify that the information contained herein is true and complete to the best of my knowledge and belief.

Terry W. Franklin

Name
Terry W. Franklin

Position

Agent

Company

Rhymes Drilling Company, Inc.

Date

8/21/85

I hereby certify that the well location shown on this plat was plotted from field notes of actual surveys made by me or under my supervision, and that the same is true and correct to the best of my knowledge and belief.

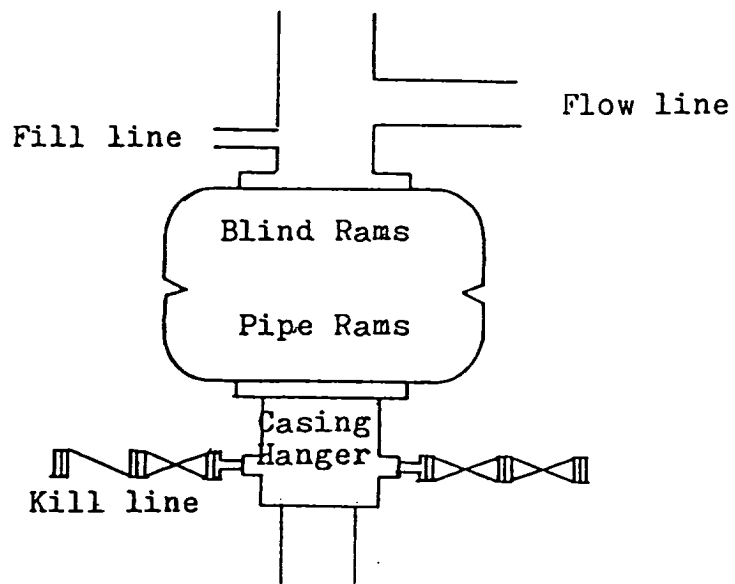
Date Surveyed

AUGUST 19, 1985

Registered Professional Engineer and/or Land Surveyor

John W. West

Certificate No. JOHN W. WEST, 676
RONALD J. EIDSON, 3239



Blowout Preventer
3000 psi working pressure

SUPPLEMENTAL DRILLING DATA

Rhymes Drilling Company, Inc.
Exxon '31' Federal No. 1
1980' FNL & 1980' FWL
Sec. 31, T25S, R305
Eddy County, N.M.

NM - 27647

1. Surface Formation: Recent.

2. Estimated Geological Marker Tops:

Rustler	660'	Lamar 'LS'	3425'
Salt	770'	Delaware 'SS'	3450'
Base Salt	3280'	Ramsey 'SS'	3485'

3. Mineral Bearing Formation: Delaware - oil.

4. Proposed Casing and Cement Program:

8 5/8" Casing - Set approximately 750', 24.0#, J-55 ST&C casing, and cement with 520 sx cement to surface.

4 1/2" Casing - Set to total depth, 4 1/2", 10.5#, K-55, ST&C casing and cement with 200 sx cement to isolate all oil, gas and water zones.

5. Pressure Control Equipment: A 3000 psi working pressure double-ram type B.O.P. will be installed after 8 5/8" casing is set and cemented.

6. Proposed Mud Program:

0 - 750' Fresh water mud. Mud weight 8.5 - 9.0.
Viscosity 32-34.

750 - 3300' Brine water. Mud weight 10.0.
Viscosity 28-30.

3300 - 4000' Brine water adding starch and drispac for
water loss control.

7. Auxiliary Equipment: A kelly cock will be installed on the rig floor while drilling operations are in progress.

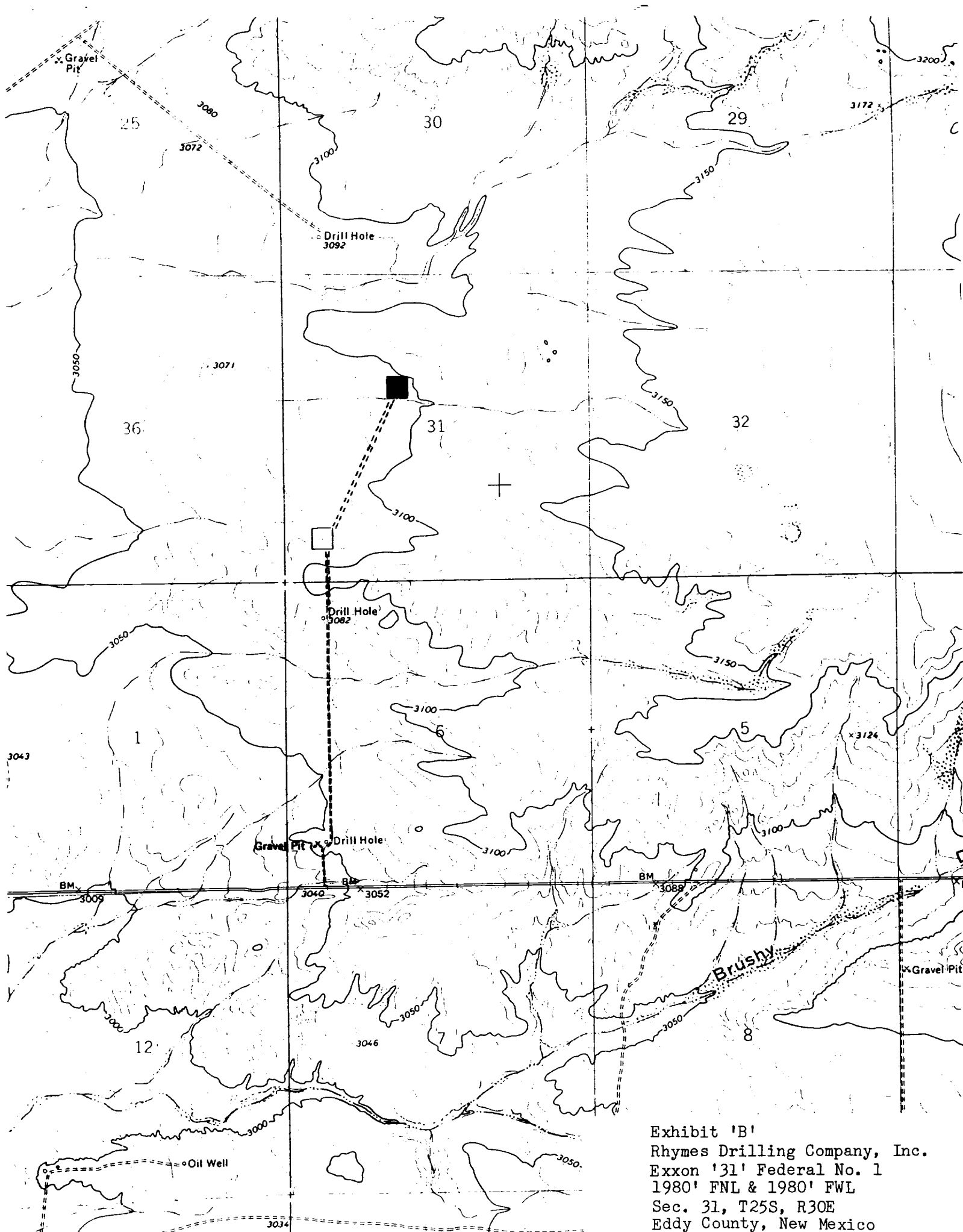


Exhibit 'B'
Rhymes Drilling Company, Inc.
Exxon '31' Federal No. 1
1980' FNL & 1980' FWL
Sec. 31, T25S, R30E
Eddy County, New Mexico



Reserve Pit
80' x 80'

Trash
Pit



20'

30'

150'

225'

Exhibit 'C'
Rhymes Drilling Company, Inc.
Exxon '31' Federal No. 1
Sec. 31, T25S, R30E
Eddy County, New Mexico

ACCESS ROAD