

All distances must be from the outer boundaries of the Section

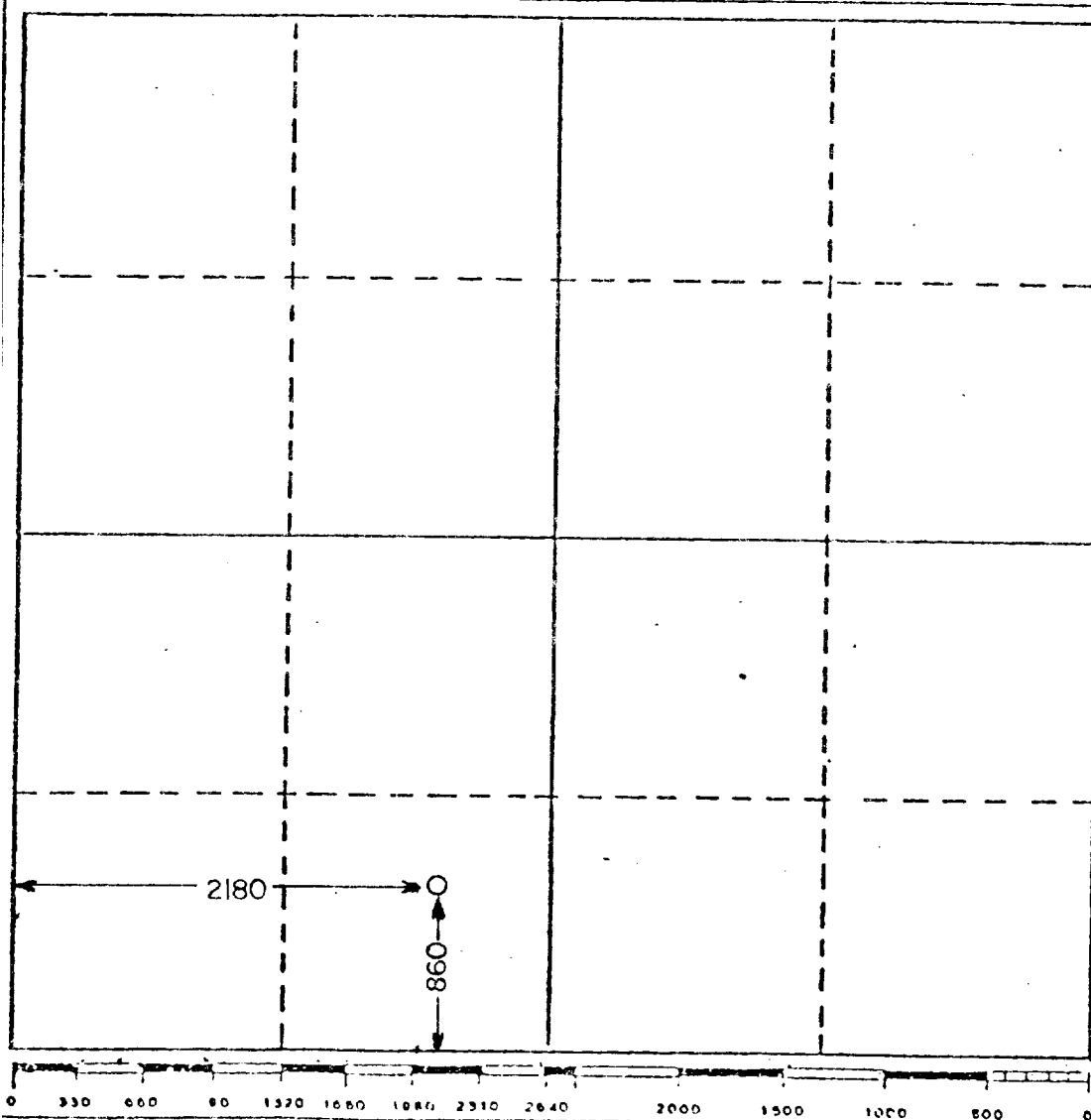
Operator El Paso Exploration Company			Lease Pecos Federal			Well No. 4		
Unit Letter N	Section 27	Township 26 South	Range 29 East	County Eddy				
Actual Footage Location of Well: 860 feet from the South line and 2180 feet from the West line								
Ground Level Elev. 2869.0	Producing Formation Cherry Canyon Del.		Pool Brushy Draw Del.		Dedicated Acreage: 40 Acres			

1. Outline the acreage dedicated to the subject well by colored pencil or hatchure marks on the plat below.
2. If more than one lease is dedicated to the well, outline each and identify the ownership thereof (both as to working interest and royalty).
3. If more than one lease of different ownership is dedicated to the well, have the interests of all owners been consolidated by communitization, unitization, force-pooling, etc?

☐ Yes ☐ No If answer is "yes," type of consolidation _____

If answer is "no," list the owners and tract descriptions which have actually been consolidated. (Use reverse side of this form if necessary.) _____

No allowable will be assigned to the well until all interests have been consolidated (by communitization, unitization, forced-pooling, or otherwise) or until a non-standard unit, eliminating such interests, has been approved by the Division.



CERTIFICATION

I hereby certify that the information contained herein is true and complete to the best of my knowledge and belief.

Harry L. Mitchell

Name **Harry L. Mitchell**

Position
Senior Staff Engineer

Company
El Paso Exploration Co.

Date
9/25/85

I hereby certify that the well location shown on this plat was plotted from field notes of actual surveys made by me or under my supervision, and that the same is true and correct to the best of my knowledge and belief.

Date Surveyed
9/25/85

Registered Professional Engineer
and/or Land Surveyor

Truman Gaskin
Truman Gaskin

Certificate No.
2126

distances must be from the outer boundaries of Section.

Operator El Paso Exploration Company		Lease Pecos Federal		Well No. 4
Unit Letter G	Section 27	Township 26 South	Range 29 East	County Eddy

Actual Footage Location of Well:

660' feet from the South line and 1980' feet from the West line

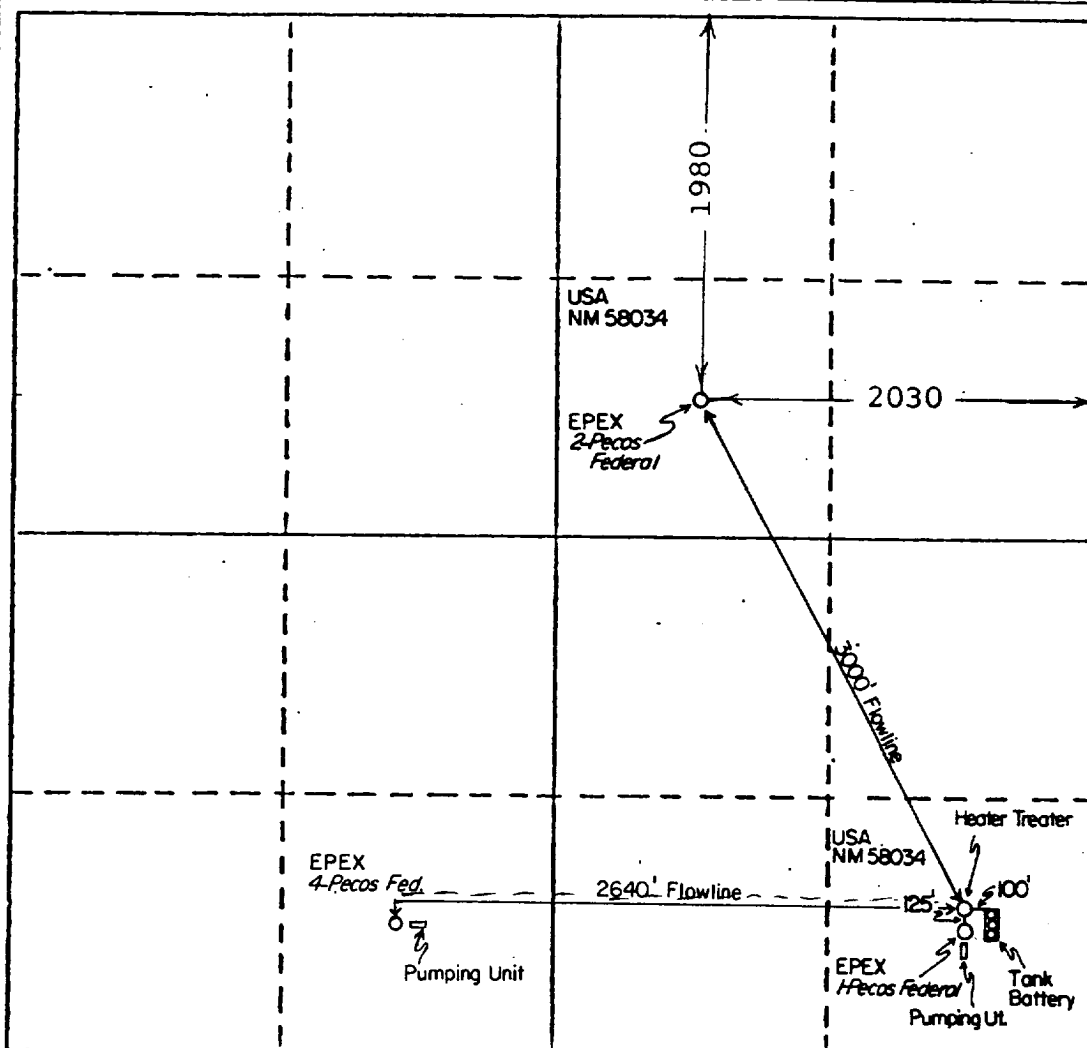
Ground Level Elev. 2869'	Producing Formation	Pool	Dedicated Acreage: Acres
------------------------------------	---------------------	------	---------------------------------

1. Outline the acreage dedicated to the subject well by colored pencil or hachure marks on the plat below.
2. If more than one lease is dedicated to the well, outline each and identify the ownership thereof (both as to working interest and royalty).
3. If more than one lease of different ownership is dedicated to the well, have the interests of all owners been consolidated by communitization, unitization, force-pooling, etc?

☐ Yes ☐ No If answer is "yes," type of consolidation _____

If answer is "no," list the owners and tract descriptions which have actually been consolidated. (Use reverse side of this form if necessary.) _____

No allowable will be assigned to the well until all interests have been consolidated (by communitization, unitization, forced-pooling, or otherwise) or until a non-standard unit, eliminating such interests, has been approved by the Division



CERTIFICATION

I hereby certify that the information contained herein is true and complete to the best of my knowledge and belief.

Name

Position

Company

Date

I hereby certify that the well location shown on this plat was plotted from field notes of actual surveys made by me or under my supervision, and that the same is true and correct to the best of my knowledge and belief.

Date Surveyed

6-24-1985

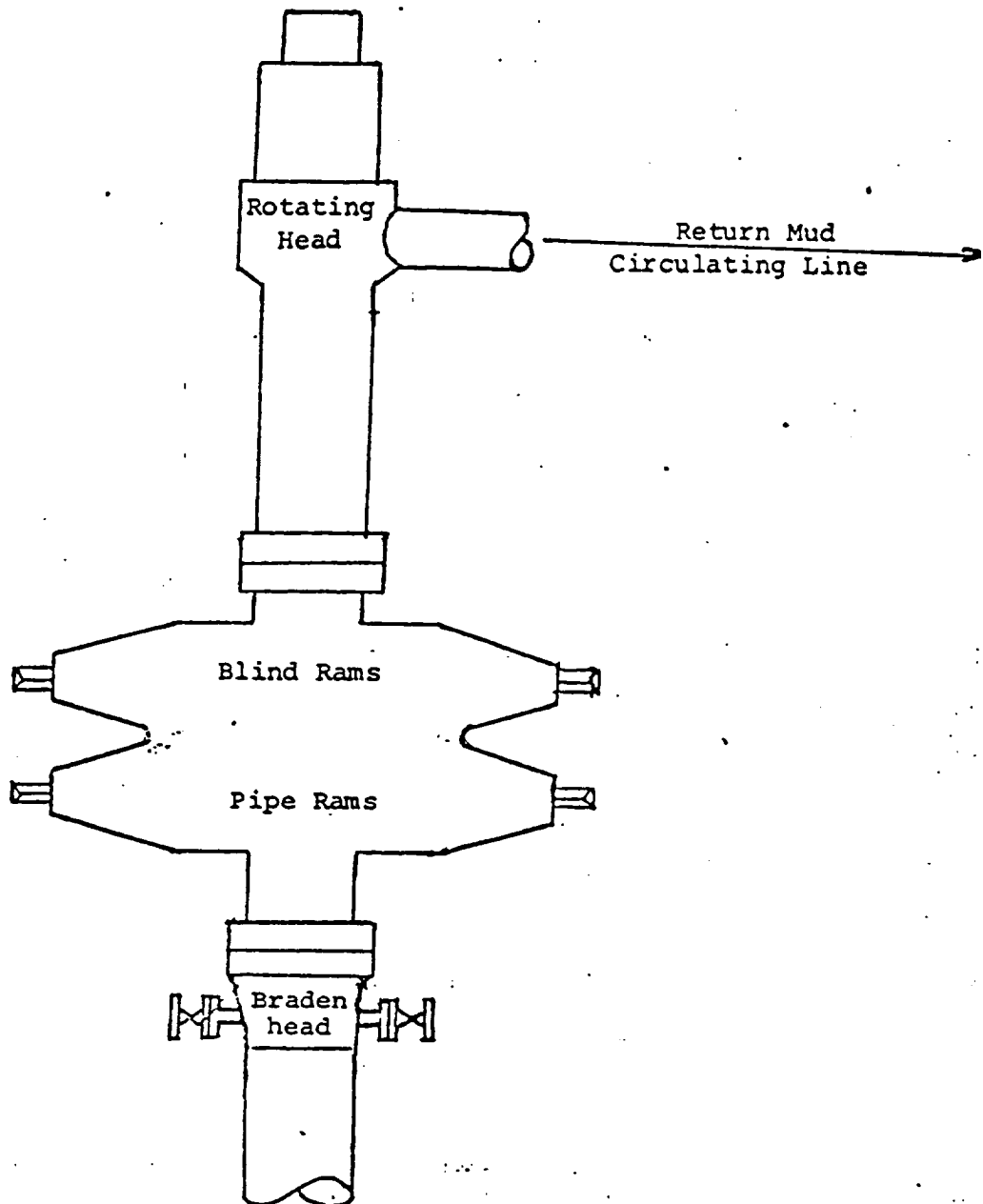
Registered Professional Engineer
and/or Land Surveyor

Truman Gaskin
Truman Gaskin

Certificate No.

2126

BOP EXHIBIT



WELLHEAD BOP STACK

Test to 3000 psi Working Pressure

OPERATION PLAN

Pecos Federal #4

I. Location

1980' FWL and 660' FSL, Sec. 27, T26S, R29E

Field Brushy Draw Elevation GL

II. Geology

- A. Formation Tops: Lamar Lime 2880'
 Bell Canyon 2910'
 Cherry Canyon 3780'
 Brushy Canyon 5160'
- B. Logging Program: Compensated Density-Neutron Dual
 Lateral Log
- C. Coring Program: None

III. Drilling

Mud Program Mud from surface to 400' Fresh Water
 Mud from 400' - 5500' cut brine water

IV. Material

A. Casing Program:

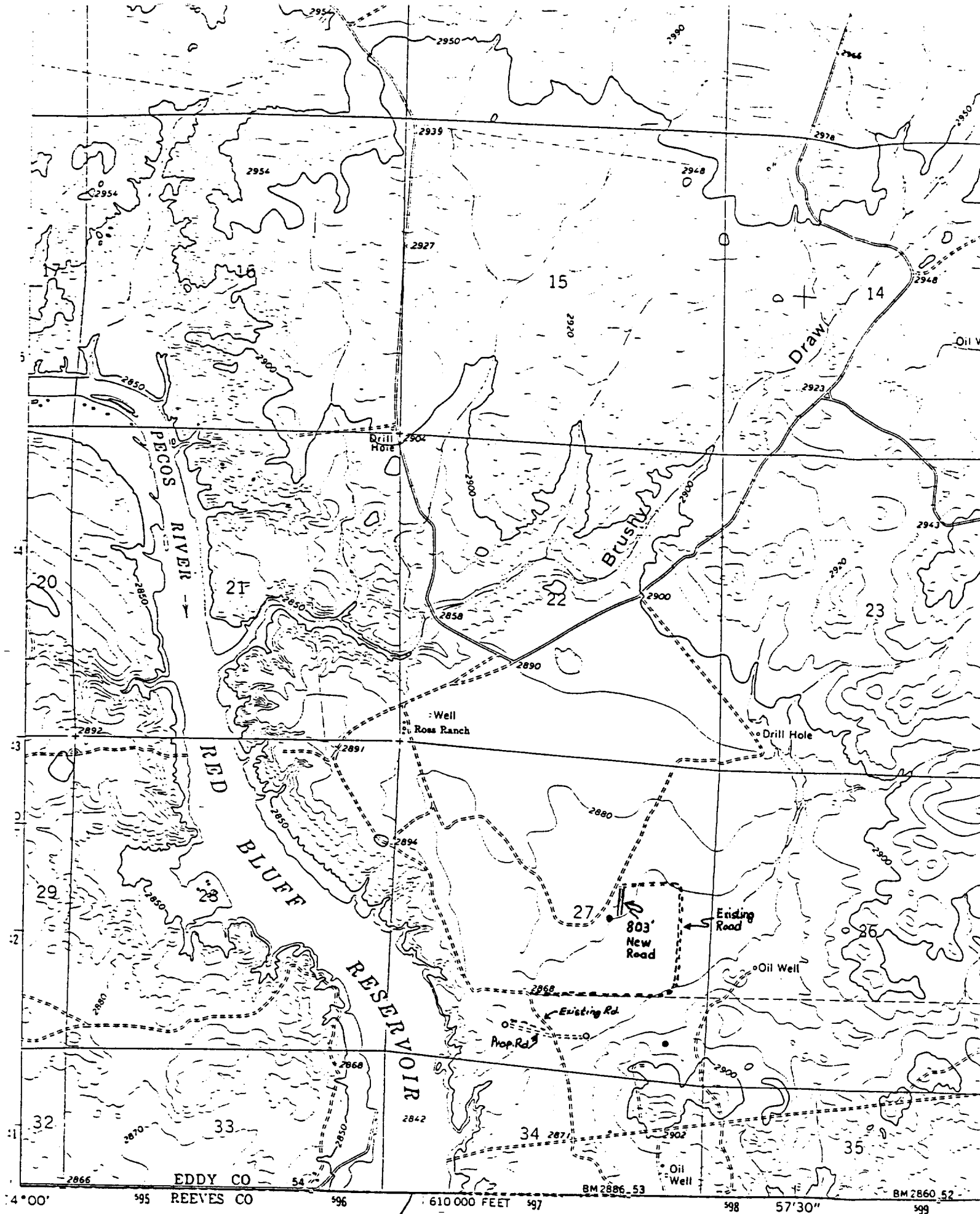
<u>Hole Size</u>	<u>Depth</u>	<u>Csg. Size</u>	<u>Wt. & Gr.</u>
17 1/8"	400'	13 3/8"	48# H-40
11"	2900'	8 5/8"	32# K-55
7 7/8"	5500'	4 1/2"	9.5# K-55

B. Floating Equipment:

13 3/8" Surface Casing	Insert-Texas Pattern Shoe	2 Centralizers
8 5/8" Intermediate	Float Collar-Guide Shoe	4 Centralizers
4 1/2" Production	Float Collar-Guide Shoe	10 Centralizers

C. Tubing: 5000' of 2 3/8" 4.7# J-55

D. Well Head Equipment: Casinghead 13 3/8" x 8 5/8" 2000 psi W.P.
 Casinghead 8 5/8" x 4 1/2" 2000 psi W.P.
 Casinghead 4 1/2" x 2 3/8" 2000 psi W.P.



Mapped, edited, and published by the Geological Survey
Control by USGS and USO&GS

MAP # 1

