

RECEIVED BY

SUBMIT IN ' LICATE*
(Other instructions on
reverse side)Form approved.
Budget Bureau No. 42-R1425.

NOV 25 1985

UNITED STATES
DEPARTMENT OF THE INTERIOR
GEOLOGICAL SURVEY

30-015-25497

APPLICATION FOR PERMIT TO DRILL, DEEPEN, OR PLUG BACK

1a. TYPE OF WORK

DRILL ☒DEEPEN ☐PLUG BACK ☐

b. TYPE OF WELL

OIL
WELL ☒GAS
WELL ☐OTHER ☐SINGLE
ZONE ☐MULTIPLE
ZONE ☐

2. NAME OF OPERATOR

MAX WILSON, INC. ✓

3. ADDRESS OF OPERATOR

P. O. Drawer 1978 - Roswell, NM 88201

4. LOCATION OF WELL (Report location clearly and in accordance with any State requirements.)*

At surface

770' FSL and 2,080' FEL

14. DISTANCE IN MILES AND DIRECTION FROM NEAREST TOWN OR POST OFFICE*

3 miles - Whites City, NM

15. DISTANCE FROM PROPOSED*
LOCATION TO NEAREST
PROPERTY OR LEASE LINE, FT.
(Also to nearest drlg. unit line, if any)660' FNL
Sec. 8

16. NO. OF ACRES IN LEASE

1,104.84

17. NO. OF ACRES ASSIGNED
TO THIS WELL

42.46

18. DISTANCE FROM PROPOSED LOCATION*
TO NEAREST WELL, DRILLING, COMPLETED,
OR APPLIED FOR, ON THIS LEASE, FT.

2,560'

19. PROPOSED DEPTH

3,600'

20. ROTARY OR CABLE TOOLS

Rotary

21. ELEVATIONS (Show whether DF, RT, GR, etc.)

3,353' GR

22. APPROX. DATE WORK WILL START*

11/29/85

PROPOSED CASING AND CEMENTING PROGRAM

SIZE OF HOLE	SIZE OF CASING	WEIGHT PER FOOT	SETTING DEPTH	QUANTITY OF CEMENT
12 1/4"	8 5/8"	24#	300'	275 sx circ.
7 7/8"	4 1/2"	9.5#	3,600'	300 sx

Will drill first 300' w/ fresh water.
From base of surface casing to TD brine.

IN ABOVE SECTION DESCRIBE PROPOSED PROGRAM: If proposal is to deepen or plug back, give data on present productive zone and proposed new productive zone. If proposal is to drill or deepen directionally, give pertinent data on subsurface locations and measured and true vertical depths. Give blowout preventer program, if any.

24.

SIGNED

TITLE President

DATE 11/18/85

(This space for Federal or State office use)

PERMIT NO.

APPROVAL DATE

APPROVED BY

TITLE

DATE 11-22-85

CONDITIONS OF APPROVAL, IF ANY:

APPROVAL SUBJECT TO
GENERAL REQUIREMENTS AND
SPECIAL STIPULATIONS
ATTACHED

Revised APR.
101, N.C.
11/21/85

NEW MEXICO OIL CONSERVATION COMMISSION
WELL LOCATION AND ACREAGE DEDICATION PLAT

Form C-102
Supersedes C-128
Effective 1-1-65

All distances must be from the outer boundaries of the Section.

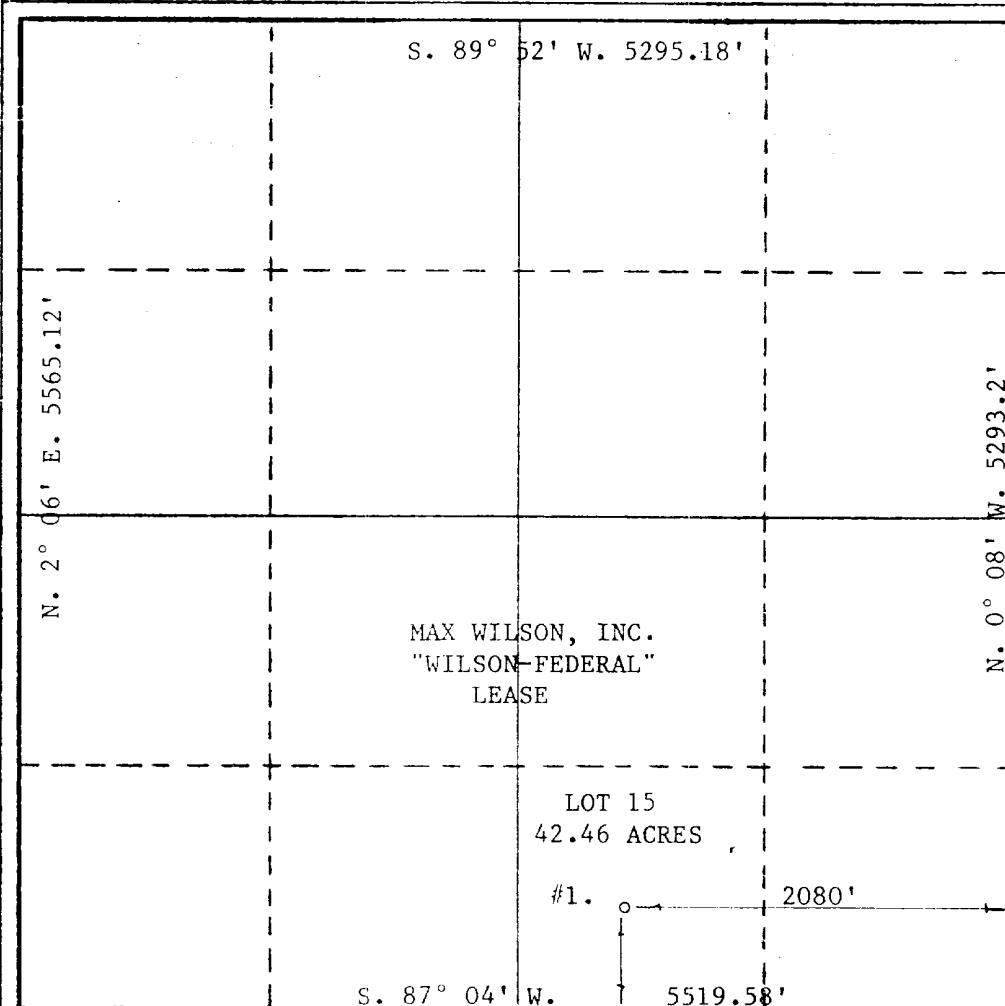
Operator MAX WILSON, INC.			Lease WILSON-FEDERAL		Well No. 1
Unit Letter "O"	Section 5	Township 25-S	Range 26-E	County EDDY	
Actual Footage Location of Well: 550 feet from the SOUTH line and 2080 feet from the EAST line					
Ground Level Elev. 3353	Producing Formation CHERRY CANYON DELAWARE		Pool WILDCAT	Dedicated Acreage: 42.46 Acres	

1. Outline the acreage dedicated to the subject well by colored pencil or hatchure marks on the plat below. (LOT 15)
2. If more than one lease is dedicated to the well, outline each and identify the ownership thereof (both as to working interest and royalty).
3. If more than one lease of different ownership is dedicated to the well, have the interests of all owners been consolidated by communitization, unitization, force-pooling, etc?

☐ Yes ☐ No If answer is "yes," type of consolidation _____

If answer is "no," list the owners and tract descriptions which have actually been consolidated. (Use reverse side of this form if necessary.) _____

No allowable will be assigned to the well until all interests have been consolidated (by communitization, unitization, forced-pooling, or otherwise) or until a non-standard unit, eliminating such interests, has been approved by the Commission.



CERTIFICATION

I hereby certify that the information contained herein is true and complete to the best of my knowledge and belief.

Name *Max A. Schumann Jr.*

Position

Company

Date

I hereby certify that the well location shown on this plat was plotted from field notes of actual surveys made by me or under my supervision, and that the same is true and correct to the best of my knowledge and belief.

Date Surveyed

NOVEMBER 19, 1985

Registered Professional Engineer and/or Land Surveyor

Max A. Schumann Jr.
MAX A. SCHUMANN JR

Certificate No.

1510

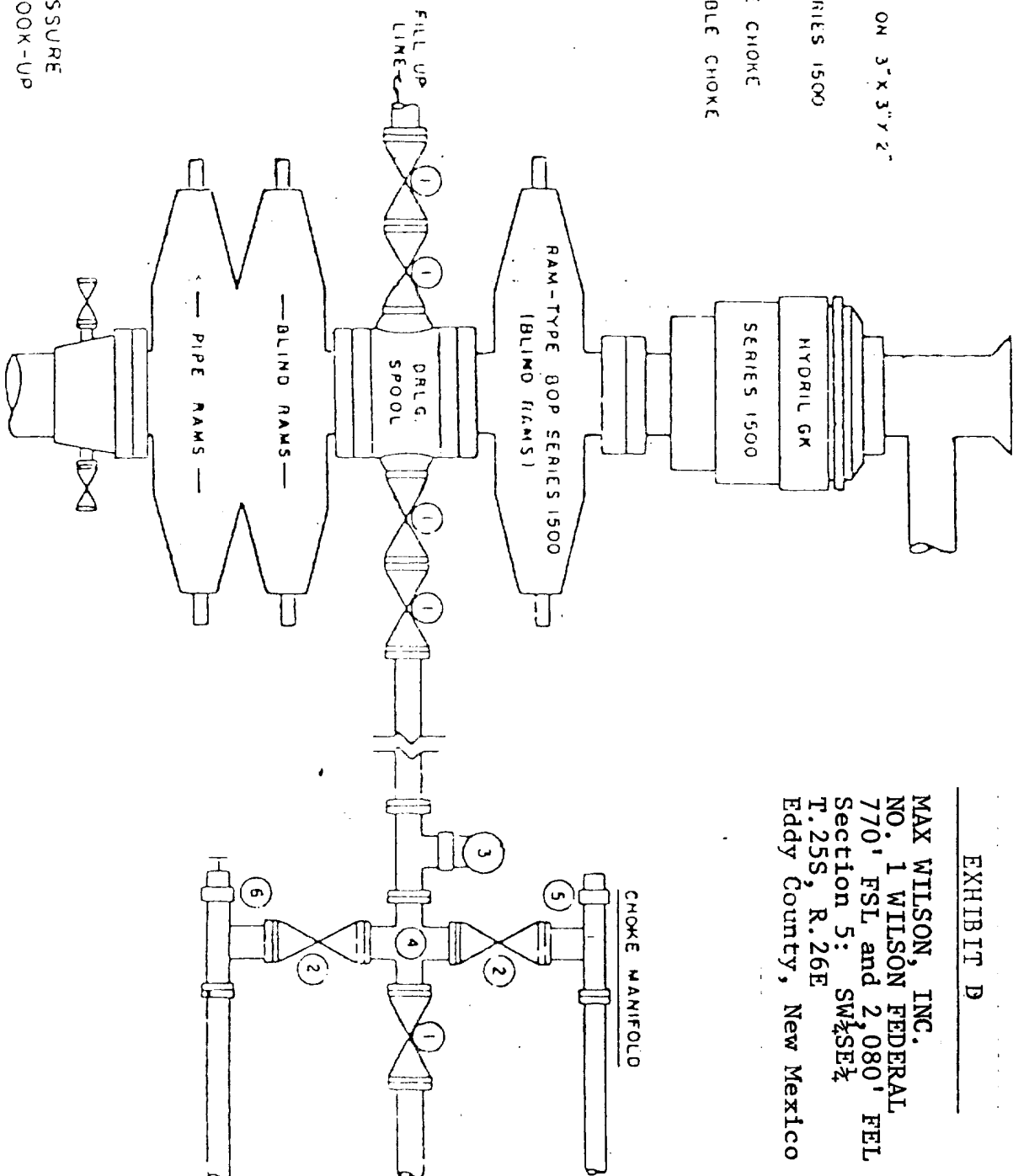
0 330 660 990 1320 1650 1980 2310 2640 2000 1500 1000 500 0

Blowout Preventer

EXHIBIT B

MAX WILSON, INC.
NO. 1 WILSON FEDERAL
770' FSL and 2,080' FEL
Section 5: SW $\frac{1}{4}$ SE $\frac{1}{4}$
T. 25S, R. 26E
Eddy County, New Mexico

- ① 3" SERIES 1500 VALVE
- ② 2" SERIES 1500 VALVE
- ③ 2" MUD PRESSURE GAUGE ON 3" X 3" X 2" SERIES 1500 STEEL TEE
- ④ 3" SERIES 1500 X 2" SERIES 1500 STEEL CROSS
- ⑤ 2" SERIES 1500 POSITIVE CHOKE
- ⑥ 2" SERIES 1500 ADJUSTABLE CHOKE



5000 PSI WORKING PRESSURE
BLOWOUT PREVENTER HOOK-UP
(SERIES 1500 FLANGES OR BETTER)

APPLICATION FOR DRILLING

Max Wilson, Inc. No. 1 Wilson Federal
770' FSL and 2,080' FEL
Township 25 South, Range 26 East
Section 5: SW $\frac{1}{4}$ SE $\frac{1}{4}$
Eddy County, New Mexico

In conjunction with Form 9-311C, Application For Permit To Drill subject well, Max Wilson, Inc. submits the following ten items of pertinent information in accordance with Mineral Management Service requirements:

1. The geologic surface formation is Ochoan.
2. The estimated tops of geologic markers are as follows:

Top Salt	800'
Base Salt	1,650'
Delaware Limestone	1,850'
Delaware Sand	1,950'
Cherry Canyon	3,600'

3. The estimated depths at which anticipated water, oil or gas formations are expected to be encountered:

Water:	Approximately 150'
Oil or gas:	3,600'
Cherry Canyon:	3,600'

4. Proposed Casing Program: See Form 9-311C
5. Pressure Control Equipment: Blowout Preventor - See Exhibit D
6. Mud Program: Brine to the Delaware - Mud to Total Depth
7. Auxiliary Equipment: Rotary rig
8. Testing, Logging and Coring Programs:
 - Rotary tool open hole testing
 - Logging: Gama Ray Neutron to Total Depth
9. No abnormal pressures or temperatures are anticipated.
10. Anticipated starting date: November 29, 1985.

Exhibit A

