

UNITED STATES
DEPARTMENT OF THE INTERIOR
GEOLOGICAL SURVEY

APPLICATION FOR PERMIT TO DRILL, DEEPEN, OR PLUG BACK

1a. TYPE OF WORK

DRILL ☒DEEPEN ☐PLUG BACK ☐

b. TYPE OF WELL

OIL
WELL ☒GAS
WELL ☐

OTHER

SINGLE
ZONE ☐RECEIVED
ZONE ☐

2. NAME OF OPERATOR

J.C. Williamson

MAY 18 1981

3. ADDRESS OF OPERATOR

1385 Midland National Bank Tower

4. LOCATION OF WELL (Report location clearly and in accordance with any State requirements*)

At surface

~~660 FSL 1650 FEL~~ 1650/S 660/E

At proposed prod. zone

~~660 FSL 1650 FEL~~

14. DISTANCE IN MILES AND DIRECTION FROM NEAREST TOWN OR POST OFFICE*

13 miles SE of Malaga, New Mexico

15. DISTANCE FROM PROPOSED*

LOCATION TO NEAREST
PROPERTY OR LEASE LINE, FT.
(Also to nearest drlg. unit line, if any)

330

16. NO. OF ACRES IN LEASE

280

17. NO. OF ACRES ASSIGNED
TO THIS WELL

40

18. DISTANCE FROM PROPOSED LOCATION*

TO NEAREST WELL, DRILLING, COMPLETED,
OR APPLIED FOR, ON THIS LEASE, FT.

None

19. PROPOSED DEPTH

4000'

20. ROTARY OR CABLE TOOLS

Cable Tools

21. ELEVATIONS (Show whether DP, RT, GR, etc.)

2893.2 GR

22. APPROX. DATE WORK WILL START*

July 1, 1981

23.

PROPOSED CASING AND CEMENTING PROGRAM

SIZE OF HOLE	SIZE OF CASING	WEIGHT PER FOOT	SETTING DEPTH	QUANTITY OF CEMENT
18"	10-3/4	40.5#	350	300 sx (sufficient to circ.)
10"	7"	23#	3300	150 sx
6-1/2	4-1/2	9-1/2#	4100	500 sx

IN ABOVE SPACE DESCRIBE PROPOSED PROGRAM: If proposal is to deepen or plug back, give data on present productive zone and proposed new productive zone. If proposal is to drill or deepen directionally, give pertinent data on subsurface locations and measured and true vertical depths. Give blowout preventer program, if any.

24.

SIGNED

J.C. Williamson

TITLE

Operator

DATE

APR 28 1981

(This space for Federal or State office use)

PERMIT NO.

APPROVED

APPROVAL DATE

(Orig. Sgd.) GEORGE H. STEWART

APPROVED BY

CONDITIONS OF APPROVAL

TITLE

DATE

FOR

JAMES A. GILLHAM
DISTRICT SUPERVISOR

INSP 5-6-81

APR 29 1981

*See Instructions On Reverse Side

NEW MEXICO OIL CONSERVATION COMMISSION
WELL LOCATION AND ACREAGE DEDICATION PLAT

Form C-102
Supersedes C-128
Effective 1-1-55

All distances must be from the outer boundaries of the Section

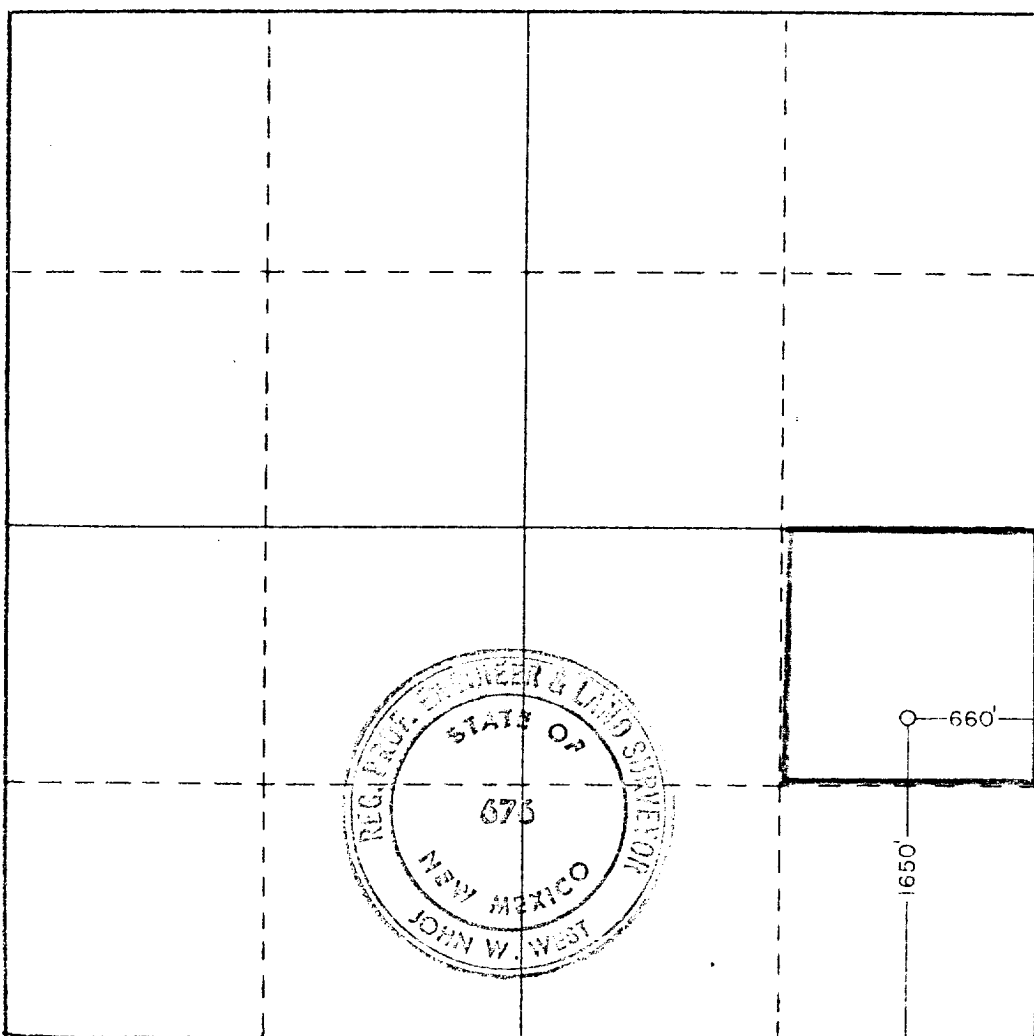
Operator J.C. Williamson		Lease E.P. USA		Well No. 1	
Unit Letter I	Section 26	Township 26South	Range 29East	County Eddy	
Actual Footage Location of Well:					
1650 feet from the South line and		660 feet from the East line			
Ground Level Elev. 2893.2'	Producing Formation Middle Delaware	Pool Brushy Draw - Wildcat Energy Corp.	Dedicated Acreage: 40 Acres		

1. Outline the acreage dedicated to the subject well by colored pencil or hachure marks on the plat below.
2. If more than one lease is dedicated to the well, outline each and identify the ownership thereof (both as to working interest and royalty). **One Lease is Dedicated**
3. If more than one lease of different ownership is dedicated to the well, have the interests of all owners been consolidated by communitization, unitization, force-pooling, etc?

☐ Yes ☐ No If answer is "yes," type of consolidation _____

If answer is "no," list the owners and tract descriptions which have actually been consolidated. (Use reverse side of this form if necessary.) _____

No allowable will be assigned to the well until all interests have been consolidated (by communitization, unitization, forced-pooling, or otherwise) or until a non-standard unit, eliminating such interests, has been approved by the Commission.



CERTIFICATION

I hereby certify that the information contained herein is true and complete to the best of my knowledge and belief.

Name
J.C. Williamson

Position
Operator

Company
Independent

Date
April 23, 1981

I hereby certify that the well location shown on this plat was plotted from field notes of actual surveys made by me or under my supervision, and that the same is true and correct to the best of my knowledge and belief.

Date Surveyed:
April 11, 1981

Registered Professional Engineer and/or Land Surveyor

John W. West
Certificate No. **JOHN W. WEST 578**
PATRICK A. ROMERO 12883
Ronald J. Eidson 3239

0 330 660 990 1320 1650 1980 2310 2640 2970 3300 3630 3960 4290 4620 4950 5280 5610 5940 6270 6600

SUPPLEMENTAL DRILLING DATA

J.C. WILLIAMSON
WELL #1 EP-USA

1. SURFACE FORMATION: Quaternary Alluvium

2. ESTIMATED TOPS OF GEOLOGIC MARKERS:

Rustler Anhydrite	350'
Lamar	3110'
Ramsey Sand	3165'
Olds Sand	3220'
Top Cherry Canyon	4150'

3. ANTICIPATED POSSIBLE WATER AND HYDROCARBON BEARING ZONES:

Fresh Water	above 350 feet
Delaware (Oil)	3165-3175 feet
Cherry Canyon (Oil)	4000-4200 feet

4. PROPOSED CASING AND CEMENTING PROGRAM:

Casing program is shown on Form 9-331 C.

Hole for surface casing will be drill to below fresh water zones. Surface casing will then be run to bottom and cemented to the surface to protect fresh water zones.

Surface casing is large enough to run 8-5/8" and 7" cave in and/or water shut-off casing strings if necessary to do so. If either or both of these casing strings are run they will be mudded in and will be pulled

10-3/4" surface casing will be cemented to the surface with class "C" cement,

7" protection casing will be cemented with 150 sacks of Class "C" cement at 3300'

4-1/2" in production casing will be cemented at total depth or shallowing if significant shows are encountered in its Middle Delaware formation

5. PRESSURE CONTROL EQUIPMENT:

Pressure control equipment will consist of a control valve and oil saver.

6. CIRCULATING MEDIUM:

This will be a cable tool hole. Water will be the drilling fluid.

7. AUXILIARY EQUIPMENT:

Not applicable.

8. TESTING, LOGGING AND CORING PROGRAM:

No coring is planned.

Formation tests will be made as warranted by bailing hole down and measuring fluid entry rate.

It is planned that a Gamma Ray - Sonic log will be run.

9. ABNORMAL PRESSURES, TEMPERATURES OR HYDROGEN SULFIDE GAS:

None anticipated.

10. ANTICIPATED STARTING DATE:

It is planned that operating will commence on June 20, 1981.