

UNITED STATES  
DEPARTMENT OF THE INTERIOR  
BUREAU OF LAND MANAGEMENT

SUBMIT IN TRIPLICATE\*  
(Other instructions on  
reverse side)

Form approved.  
Budget Bureau No. 1004-0136  
Expires August 31, 1985

50-015-25558

C/SF

APPLICATION FOR PERMIT TO DRILL, DEEPEN, OR PLUG BACK

1a. TYPE OF WORK

DRILL ☒

DEEPEN ☐

PLUG BACK ☐

b. TYPE OF WELL

OIL  
WELL ☒

GAS  
WELL ☐

OTHER ☐

2. NAME OF OPERATOR

Rhymes Drilling Company, Inc. ✓

3. ADDRESS OF OPERATOR

P.O. Box 729, Roswell, New Mexico 88201

4. LOCATION OF WELL (Report location clearly and in accordance with all State requirements.)

At surface

1650' FNL & 1685' FWL, SE/4 NW/4, Unit Letter F

At proposed prod. zone

Same

14. DISTANCE IN MILES AND DIRECTION FROM NEAREST TOWN OR POST OFFICE\*

12 air miles southeast of Malaga, New Mexico

10. DISTANCE FROM PROPOSED\*

LOCATION TO NEAREST  
PROPERTY OR LEASE LINE, FT.  
(Also to nearest drlg. unit line, if any)

1650'

330'

16. NO. OF ACRES IN LEASE

640

17. NO. OF ACRES ASSIGNED  
TO THIS WELL

40

18. DISTANCE FROM PROPOSED LOCATION\*

TO NEAREST WELL, DRILLING, COMPLETED,  
OR APPLIED FOR, ON THIS LEASE, FT.

1078'

19. PROPOSED DEPTH

5600'

20. ROTARY OR CABLE TOOLS

Rotary

21. ELEVATIONS (Show whether DF, RT, GR, etc.)

3014' GR

22. APPROX. DATE WORK WILL START\*

January 15, 1986

23. PROPOSED CASING AND CEMENTING PROGRAM

SIZE OF HOLE	SIZE OF CASING	WEIGHT PER FOOT	SETTING DEPTH	QUANTITY OF CEMENT
17 1/2"	13 3/8"	54.5#	400'	Sufficient to Circulate
12 1/4"	8 5/8"	24 & 32#	3150'	Sufficient to Circulate
7 7/8"	5 1/2"	17.0#	5600'	Sufficient to cement to base of 8 5/8" casing

Proposed plans are to drill to the Delaware formation and test for possible commercial production of oil and gas.

Designation of Operator and Lease Bond are filed under Rhymes Drilling Company, Inc. 'Gulf Federal No. 3', Sec. 13, T26S, R29E.

Posted API  
IDI-NL  
2-7-86

IN ABOVE SPACE DESCRIBE PROPOSED PROGRAM: If proposal is to deepen or plug back, give data on present productive zone and proposed new productive zone. If proposal is to drill or deepen directionally, give pertinent data on subsurface locations and measured and true vertical depths. Give blowout preventer program, if any.

24.

SIGNED

*Levy W. Franklin*

TITLE

Agent

DATE

1/11/86

(This space for Federal or State office use)

PERMIT NO.

APPROVAL DATE

APPROVED BY

TITLE

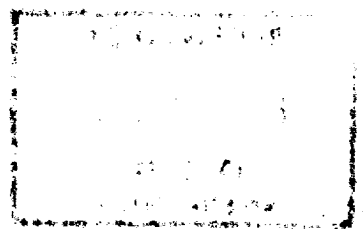
DATE

1-31-86

CONDITIONS OF APPROVAL, IF ANY:

APPROVAL SUBJECT TO  
GENERAL REQUIREMENTS AND  
SPECIAL STIPULATIONS

\*See Instructions On Reverse Side



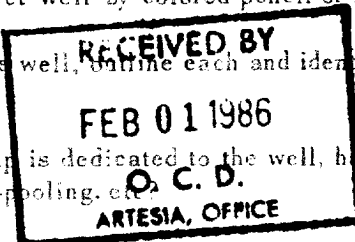
**N MEXICO OIL CONSERVATION COMMISS**  
**WELL LOCATION AND ACREAGE DEDICATION PLAT**

Form C-102  
 Supersedes C-128  
 Effective 1-1-65

All distances must be from the outer boundaries of the Section.

Operator <b>RHYMES DRILLING COMPANY</b>			Lease <b>Gulf Federal</b>		Well No. <b>2</b>
Unit Letter <b>F</b>	Section <b>13</b>	Township <b>26 South</b>	Range <b>29 East</b>	County <b>Eddy</b>	
Actual Footage Location of Well: <b>1650</b> feet from the <b>North</b> line and <b>1685</b> feet from the <b>West</b> line					
Ground Level Elev. <b>3014.</b>	Producing Formation <b>DELTAWARE</b>		Pool <b>BRUSBY DRAW</b>		Dedicated Acreage: <b>40</b> Acres

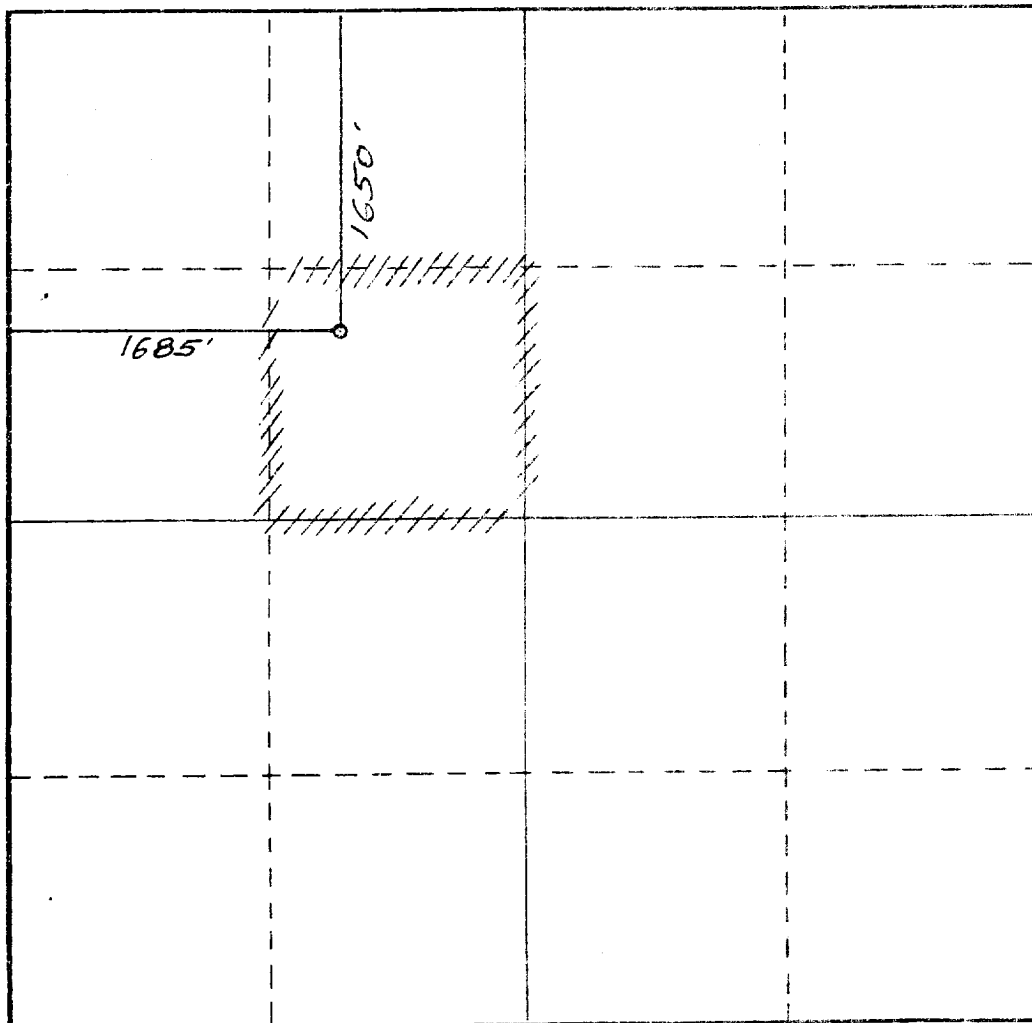
1. Outline the acreage dedicated to the subject well by colored pencil or hachure marks on the plat below.
2. If more than one lease is dedicated to the well, outline each and identify the ownership thereof (both as to working interest and royalty).
3. If more than one lease of different ownership is dedicated to the well, have the interests of all owners been consolidated by communitization, unitization, force-pooling, etc.



☐ Yes ☐ No If answer is "yes," type of consolidation \_\_\_\_\_

If answer is "no," list the owners and tract descriptions which have actually been consolidated. (Use reverse side of this form if necessary.) \_\_\_\_\_

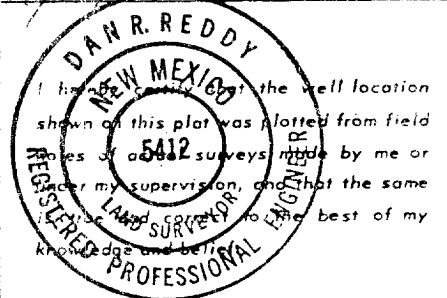
No allowable will be assigned to the well until all interests have been consolidated (by communitization, unitization, forced-pooling, or otherwise) or until a non-standard unit, eliminating such interests, has been approved by the Commission.



**CERTIFICATION**

I hereby certify that the information contained herein is true and complete to the best of my knowledge and belief.

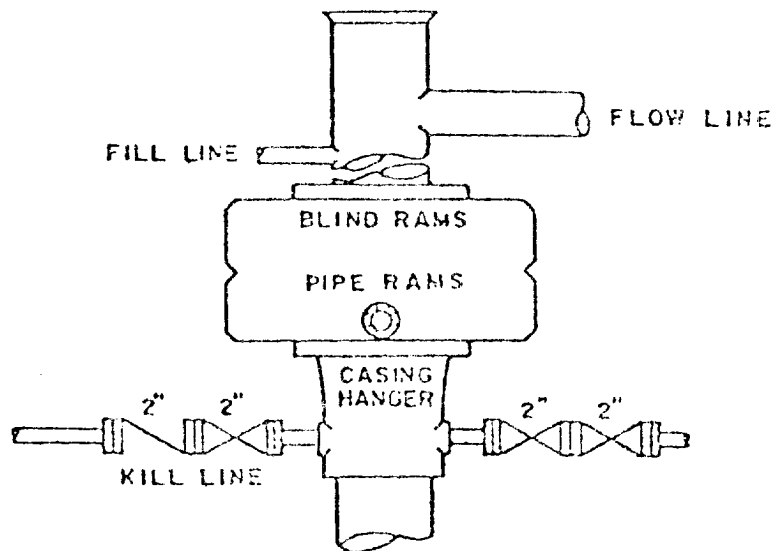
Name *Terry W. Franklin*  
 Position *Agent*  
 Company *Rhymes Drilling Co., Inc.*  
 Date *1/13/86*



Date Surveyed  
**January 10, 1986**  
 Registered Professional Engineer  
 and/or Land Surveyor  
*Dan R. Reddy*  
 Certificate No. \_\_\_\_\_  
 Survey No. **5412**

BLOWOUT PREVENTER ARRANGEMENT

Penta Exploration Company  
Well #2 Gulf Federal  
SE 1/4 NW 1/4 Sec. 13-26S-29E



900 Series

## SUPPLEMENTAL DRILLING DATA

PENTA EXPLORATION COMPANY  
WELL #2 GULF FEDERAL  
SE 1/4 SEC. 13-26S-29E  
EDDY COUNTY, NEW MEXICO

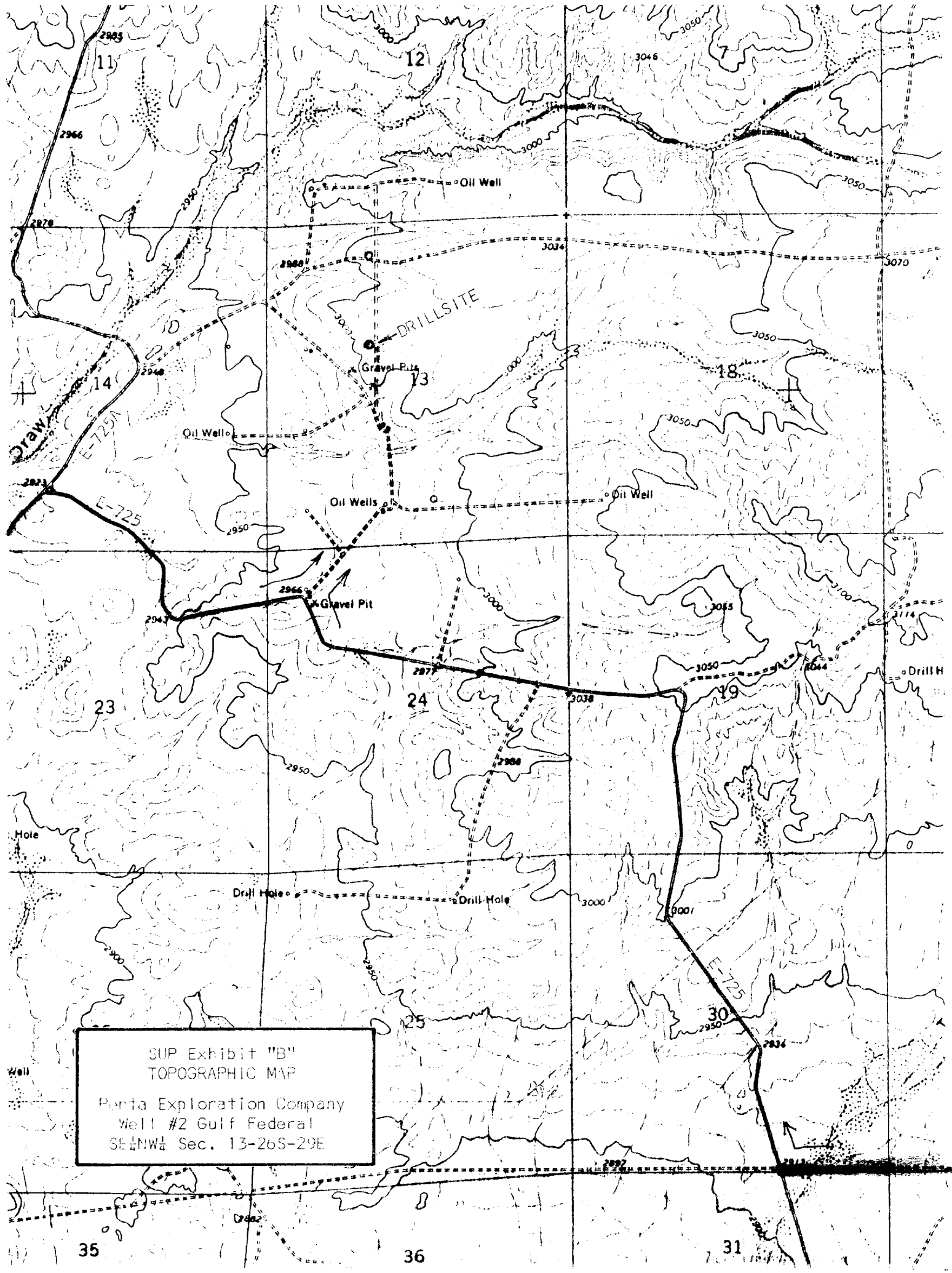
1. SURFACE FORMATION: Unconsolidated soils of Quaternary Age.
2. ESTIMATED TOPS OF GEOLOGIC MARKERS (O.L. Elevation 3015'):

Base Lower Salt	2950'	Cherry Canyon	4100'
Delaware Lime	3150'	Brushy Canyon	5250'
Delaware Sand	3185'	Bone Springs	7000'
3. POSSIBLE HYDROCARBON BEARING ZONES:

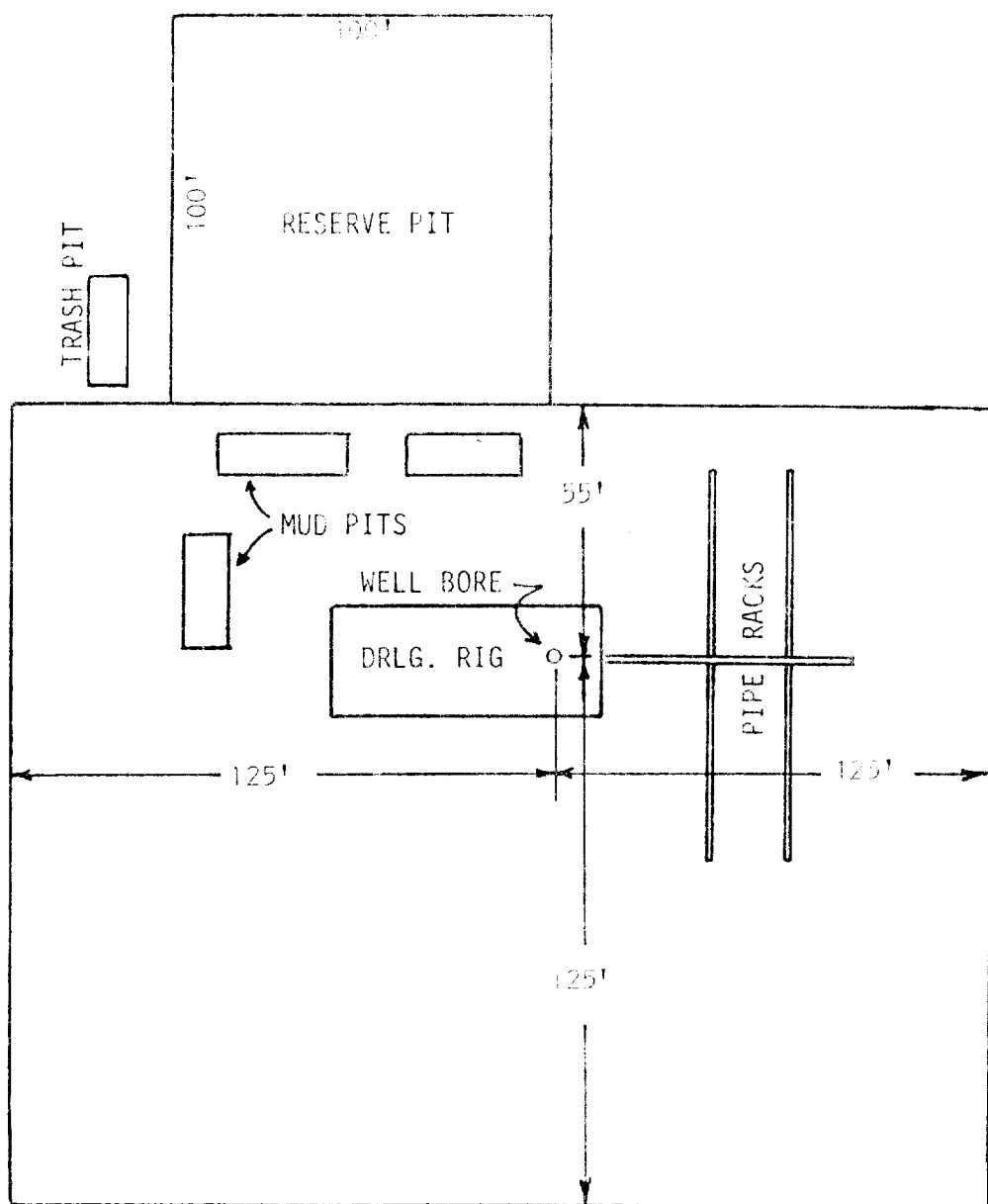
Bell Canyon:	Oil & gas
Cherry Canyon:	Oil
Brushy Canyon:	Oil
4. CASING DESIGN:

Size	Interval	Weight	Grade	Joint
13 3/8"	0 - 400'	48.0#	H-40	STC
8 5/8"	0 - 2400'	24.0#	J-55	STC
	2400 - 3150'	32.0#	J-55	STC
5 1/2"	0 - 5400'	14.0#	J-55	STC
	5400 - 6000'	15.5#	J-55	STC
5. PRESSURED CONTROL EQUIPMENT: Two Ram-Type Preventors. A sketch of BOP stack is attached.
6. CIRCULATING MEDIUM:

0 - 400'	Fresh water with gel or lime as needed for viscosity.
400 - 3150'	Brine
3150 - 6000'	Out brine conditioned as necessary for control of viscosity and water loss.
7. AUXILIARY EQUIPMENT: Drill string safety valve.
8. TESTING, LOGGING AND CORING PROGRAMS: No coring or DST's are planned. Electric Logs will include a Compensated Neutron Log with Gamma Ray.
9. ABNORMAL PRESSURES, TEMPERATURES OR GASES: None anticipated.
10. ANTICIPATED STARTING DATE: It is planned that operations will commence about April 24, 1985. Duration of drilling, completion and testing operations should be two to six weeks.



SUP Exhibit "B"  
TOPOGRAPHIC MAP  
Ponta Exploration Company  
Well #2 Gulf Federal  
SE 1/4 NW 1/4 Sec. 13-26S-29E



SUP Exhibit "D"  
SKETCH OF WELL PAD  
Penta Exploration Company  
Well #2 Gulf Federal  
SE $\frac{1}{4}$ NW $\frac{1}{4}$  Sec. 13-26S-29E