

UNITED STATES
DEPARTMENT OF THE INTERIOR
BUREAU OF LAND MANAGEMENT

SUBMIT IN T LIGATE*

Other instructions on
reverse side)

Form approved.
Budget Bureau No. 1004-0136
Expires August 31, 1985

30-015-25582

APPLICATION FOR PERMIT TO DRILL, DEEPEN, OR PLUG BACK

1a. TYPE OF WORK

DRILL ☒

DEEPEN ☐

PLUG BACK ☐

b. TYPE OF WELL

OIL
WELL ☒

GAS
WELL ☐

OTHER ☐

SINGLE
ZONE ☐

MULTIPLE
ZONE ☐

2. NAME OF OPERATOR

J.C. WILLIAMSON

3. ADDRESS OF OPERATOR

P.O. BOX 16 MIDLAND, TEXAS 79702

4. LOCATION OF WELL (Report location clearly and in accordance with any State requirements)

At surface

810' FSL & 1665' FWL

At proposed prod. zone

same

14. DISTANCE IN MILES AND DIRECTION FROM NEAREST TOWN OR POST OFFICE*

17 miles SE of Malaga, NM

16. DISTANCE FROM PROPOSED*

LOCATION TO NEAREST
PROPERTY OR LEASE LINE, FT.
(Also to nearest drlg. unit line, if any)

760'

18. DISTANCE FROM PROPOSED LOCATION*

TO NEAREST WELL, DRILLING, COMPLETED,
OR APPLIED FOR, ON THIS LEASE, FT.

None

21. ELEVATIONS (Show whether DF, RT, GR, etc.)

3119.5' GR

23. PROPOSED CASING AND CEMENTING PROGRAM

SIZE OF HOLE	SIZE OF CASING	WEIGHT PER FOOT	SETTING DEPTH	QUANTITY OF CEMENT
17-1/2"	13-3/8"	54.5#	600'	600 sx to circulate
11"	8-5/8"	24# & 32#	3100'	250 sx
7-7/8"	5-1/2"	15.5#	7000'	1000 sx in 2 stages

IN ABOVE SPACE DESCRIBE PROPOSED PROGRAM: If proposal is to deepen or plug back, give data on present productive zone and proposed new productive zone. If proposal is to drill or deepen directionally, give pertinent data on subsurface locations and measured and true vertical depths. Give blowout preventer program, if any.

24. SIGNED [Signature] TITLE Production DATE 1/13/86

(This space for Federal or State office use)

PERMIT NO. _____ APPROVAL DATE _____

APPROVED BY _____ TITLE _____ DATE 2-26-86

CONDITIONS OF APPROVAL, IF ANY:

APPROVAL SUBJECT TO
GENERAL REQUIREMENTS AND
SPECIAL STIPULATIONS
ATTACHED

*See Instructions On Reverse Side

Title 18 U.S.C. Section 1001, makes it a crime for any person knowingly and willfully to make to any department or agency of the United States any false, fictitious or fraudulent statements or representations as to any matter within its jurisdiction.

W MEXICO OIL CONSERVATION COMMISSION
WELL LOCATION AND ACREAGE DEDICATION PLAT

Form C-102
Supersedes C-128
Effective 1-1-65

All distances must be from the outer boundaries of the Section

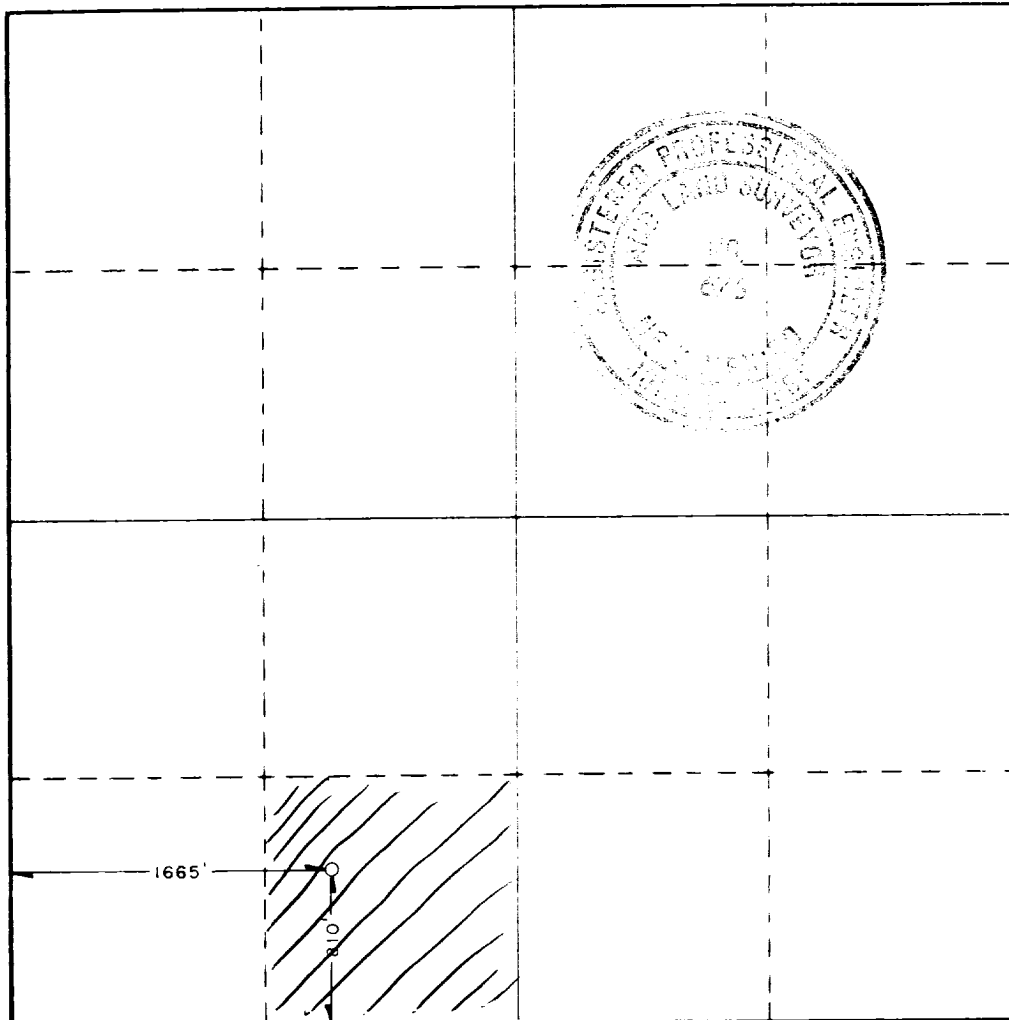
Operator J. C. WILLIAMSON			Lease SUN EX FED. UNIT			Well No.		
Tract Letter N	Section 10	Township 26 SOUTH	Range 30 EAST	County EDDY				
Actual Footage Location of Well: 810 feet from the SOUTH line and 1665 feet from the WEST line								
Ground Level Elev. 3119.5'	Producing Formation DELANARK		Pool LALCAT	Dedicated Acreage 40 Acres				

1. Outline the acreage dedicated to the subject well by colored pencil or hatchure marks on the plat below.
 2. If more than one lease is dedicated to the well, outline each and identify the ownership thereof (both as to working interest and royalty).
 3. If more than one lease of different ownership is dedicated to the well, have the interests of all owners been consolidated by communitization, unitization, force-pooling, etc?

RECEIVED BY
FEB 27 1986
O. C. D.
ARTESIA, OFFICE
- ☐ Yes ☐ No If answer is "yes," type of consolidation _____

If answer is "no," list the owners and tract descriptions which have actually been consolidated. (Use reverse side of this form if necessary.) _____

No allowable will be assigned to the well until all interests have been consolidated (by communitization, unitization, forced-pooling, or otherwise) or until a non-standard unit, eliminating such interests, has been approved by the Commission.



CERTIFICATION

I hereby certify that the information contained herein is true and complete to the best of my knowledge and belief.

J. C. Williamson
Operator

J. C. Williamson
Date
FEB 13, 1986

I hereby certify that the well location shown on this plat was plotted from field notes of actual surveys made by me or under my supervision, and that the same is true and correct to the best of my knowledge and belief.

Date Surveyed

FEBRUARY 13, 1986

Registered Professional Engineer
and or Land Surveyor

Ronald J. Eidson

Certificate No. JOHN W. WEST, 676
RONALD J. EIDSON, 3239

BOP Diagram

After 13-3/8" surface casing has been set and cement circulated to the surface, an 11" double ram BOP, as shown below will be put on the hole. This blowout preventer will be connected to a hydraulically controlled closing unit. The pressure rating on this BOP is 3000#, and will have blank and 5-1/2" pipe rams.

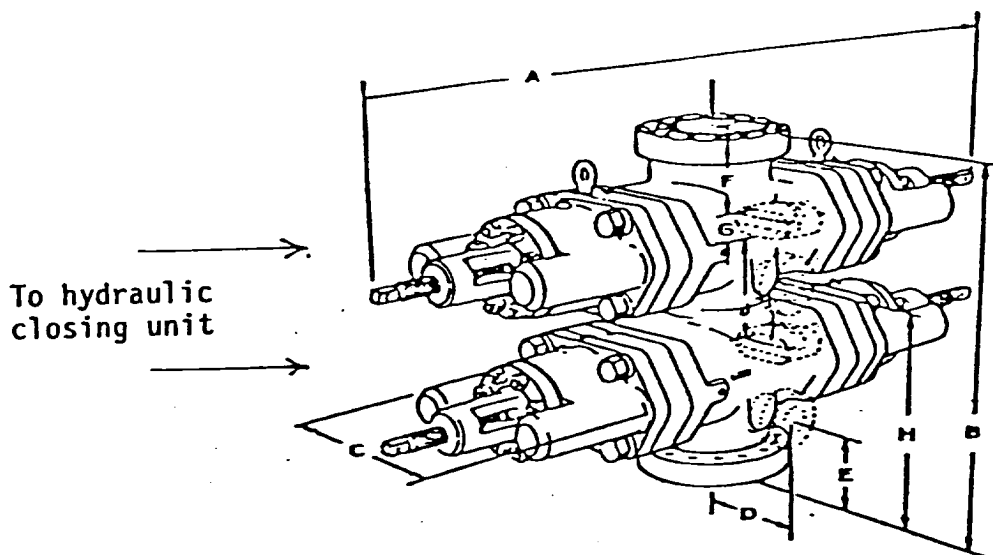


EXHIBIT "E"

J.C. WILLIAMSON
SUN EX FEDERAL #1
Sec.10-26S-30E
EDDY CO.,NEW MEXICO

SUPPLEMENTAL DRILLING DATA

J.C. WILLIAMSON
WELL SUN EX FEDERAL NO.1

1. SURFACE FORMATION: Recent

2. ESTIMATED TOPS OF GEOLOGIC MARKERS:

Rustler	550'
T/Salt	930'
B/Salt	3300'
Delaware Mt. Grp.	3500'

3. ANTICIPATED POSSIBLE WATER AND HYDROCARBON BEARING ZONES:

Fresh Water	200'
Lower Delaware (oil)	6500'

4. PROPOSED CASING AND CEMENTING PROGRAM:

Casing program is shown on Form 9-331 C.

Hole for surface casing will be drilled to a depth below fresh water zones. 13-3/8" surface casing will be run to 600 feet, below all fresh water zones and will be circulated to the surface with 600 sacks of Class "C" cement.

8-5/8" casing will be run and cemented at 3100 feet, prior to entering Delaware section and will be cemented with 250 sacks of Class "C" cement or sufficient to raise cement into the base of the lower salt.

5-1/2" casing will be run to total depth and will be cemented with 1000 sx in 2 stages w/DV tool @ 5300'+-; all pay zones will be covered by cement.

5. PRESSURE CONTROL EQUIPMENT:

A. Wellhead Equipment - Flanged type, 3000 psi WP for 13-3/8" X 8-5/8" X 5-1/2" casing program with 2-3/8" tubing anchor.

Pressure control equipment will consist of a 3000# double ram hydraulically controlled blow out preventer and a 3000# choke manifold. See Exhibit "D"

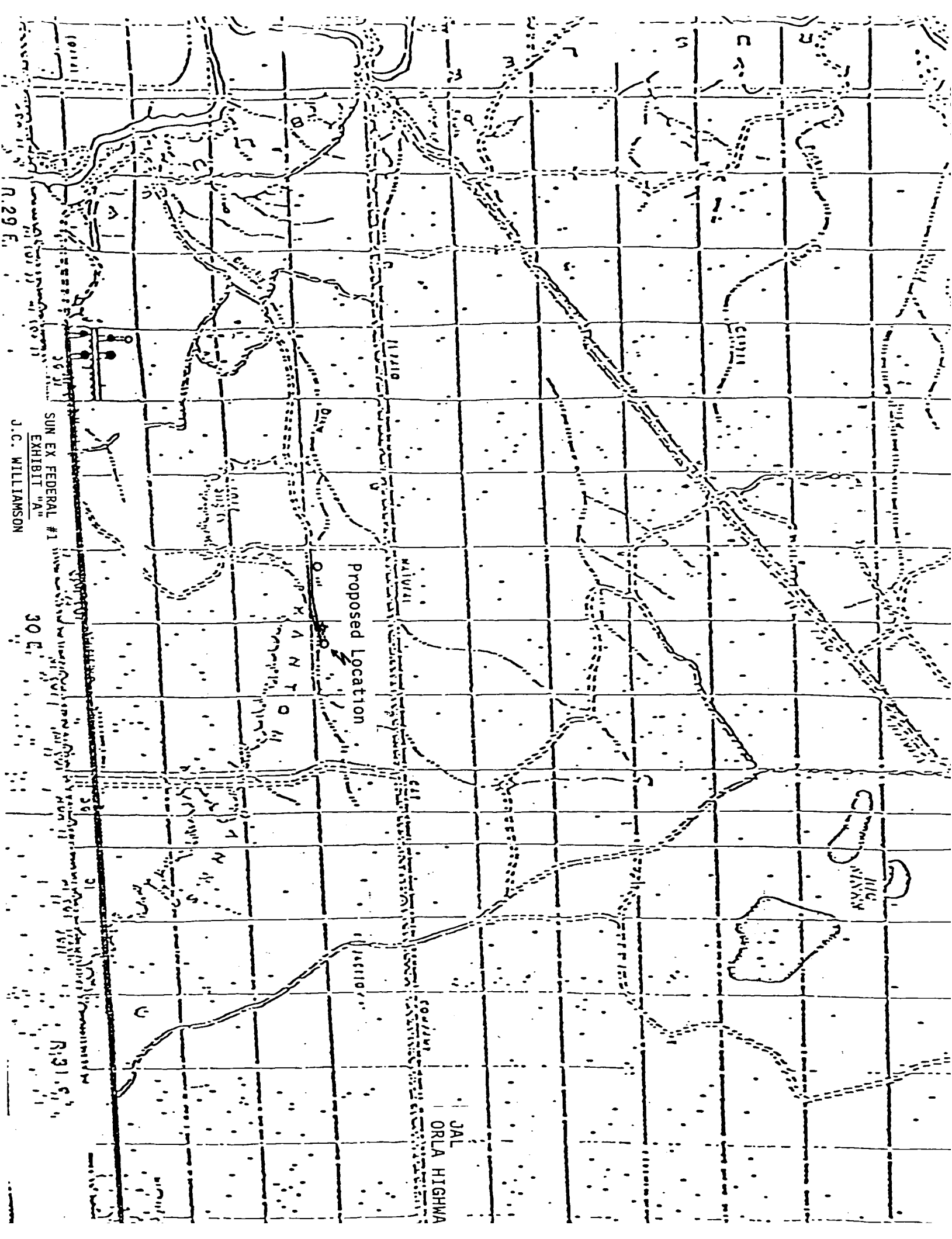
6. CIRCULATING MEDIUM:

The circulating medium will be fresh water down to 600 feet and brine water in the rest of the hole, once the water saturates itself naturally with salt.

7. AUXILIARY EQUIPMENT:

A. Kelly cocks: Upper installed on Kelly.

B. Full opening ball type to fit each type and size of drill pipe in use will be available on rig floor at all times. The valves will be in the open position for stabbing into drill pipe when Kelly is not in the string.



Proposed Location

JAL
ORLA HIGHWAY

SUN EX FEDERAL #1

EXHIBIT "A"

30 E

J.C. WILLIAMSON

200'

200'

200'

ROAD

200'

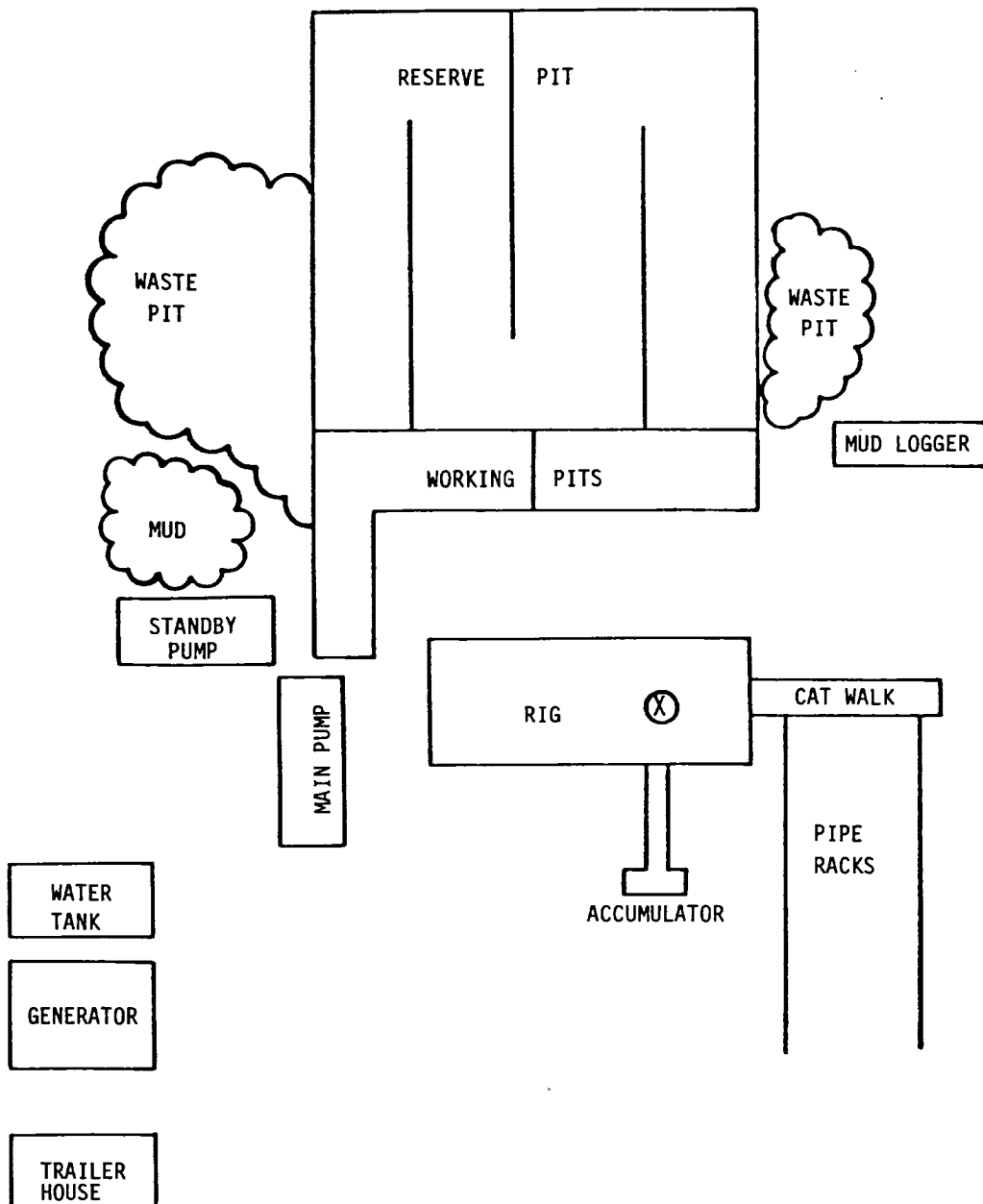


EXHIBIT "D"

J.C. WILLIAMSON
SUN EX FEDERAL UNIT #1
Sec. 10, T-26-S, R-30-E
Eddy County, New Mexico