

NEW MEXICO OIL CONSERVATION COMMISSION
WE. LOCATION AND ACREAGE DEDICATION PLAT

Form C-102
 Supersedes C-128
 Effective 1-1-65

All distances must be from the outer boundaries of the Section.

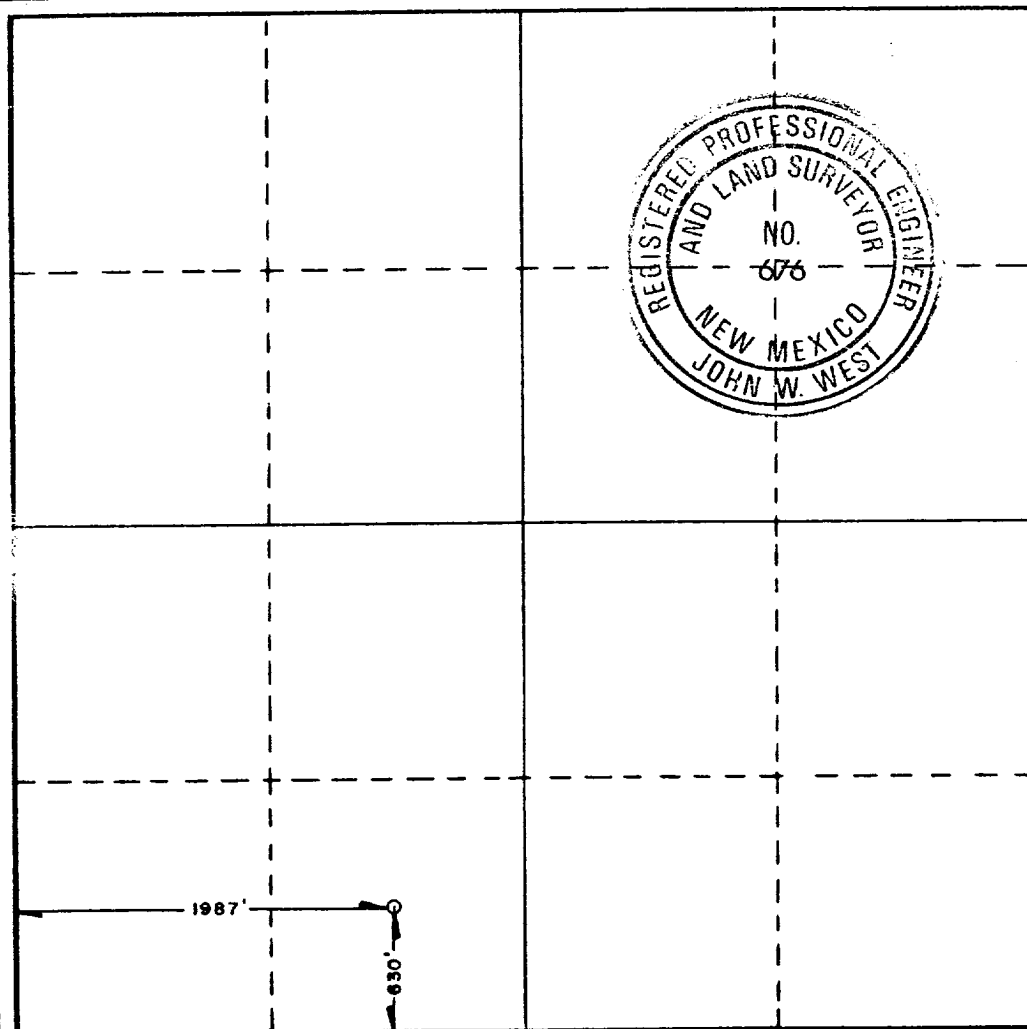
Operator THE PETROLEUM CORP. OF DELAWARE			Lease BRUSHY 12 FEDERAL		Well No. 3
Unit Letter N	Section 12	Township 26 SOUTH	Range 29 EAST	County EDDY	
Actual Footage Location of Well: 1987 feet from the WEST line and 630 feet from the SOUTH line					
Ground Level Elev. 3019.4'	Producing Formation DELAWARE		Pool BRUSHY DRAW DELAWARE		Dedicated Acreage: 40 Acres

1. Outline the acreage dedicated to the subject well by colored pencil or hachure marks on the plat below.
2. If more than one lease is dedicated to the well, outline each and identify the ownership thereof (both as to working interest and royalty).
3. If more than one lease of different ownership is dedicated to the well, have the interests of all owners been consolidated by communitization, unitization, force-pooling, etc?

☐ Yes ☐ No If answer is "yes," type of consolidation _____

If answer is "no," list the owners and tract descriptions which have actually been consolidated. (Use reverse side of this form if necessary.) _____

No allowable will be assigned to the well until all interests have been consolidated (by communitization, unitization, forced-pooling, or otherwise) or until a non-standard unit, eliminating such interests, has been approved by the Commission.



CERTIFICATION

I hereby certify that the information contained herein is true and complete to the best of my knowledge and belief.

L. E. Thomas

Name
L. E. THOMAS

Position
ENGINEER

Company
THE PETROLEUM CORPORATION OF DELAWARE

Date

I hereby certify that the well location shown on this plat was plotted from field notes of actual surveys made by me or under my supervision, and that the same is true and correct to the best of my knowledge and belief.

Date Surveyed
FEBRUARY 7, 1986

Registered Professional Engineer and/or Land Surveyor

Ronald J. Eidson

Certificate No. **JOHN W. WEST, 676**
RONALD J. EIDSON, 3239