

NO. OF COPIES RECEIVED	
DISTRIBUTION	
SANTA FE	✓
FILE	✓
U.S.G.S.	✓
LAND OFFICE	✓
OPERATOR	✓

RECEIVED BY C. S. 2048
SANTA FE, NEW MEXICO 87501
MAR 31 1986
O. C. D.
ARTESIA OFFICE

5A. Indicate Type of Lease
STATE ☒ FEE ☐
5. State Oil & Gas Lease No.
LG-7429

APPLICATION FOR PERMIT TO DRILL, DEEPEN, OR PLUG BACK

1a. Type of Work DRILL <input checked="" type="checkbox"/> DEEPEN <input type="checkbox"/> PLUG BACK <input type="checkbox"/>		7. Unit Agreement Name
b. Type of Well OIL WELL <input checked="" type="checkbox"/> GAS WELL <input type="checkbox"/> OTHER <input type="checkbox"/> SINGLE ZONE <input type="checkbox"/> MULTIPLE ZONE <input type="checkbox"/>		8. Farm or Lease Name Chevron State
2. Name of Operator MAX WILSON, INC.		9. Well No. 1
3. Address of Operator P. O. Drawer 1978 - Roswell, NM 88201		10. Field and Pool, or Wildcat Wildcat - Delaware
4. Location of Well UNIT LETTER F LOCATED 1,980 FEET FROM THE north LINE AND 1,980' FEET FROM THE west LINE OF SEC. 11 TWP. 25S RGE. 27E NMPM		12. County Eddy
19. Proposed Depth 4,200'		19A. Formation Cherry Canyon
20. Rotary or C.T. Rotary		
21. Elevations (Show whether DF, KT, etc.) 3,153' GR	21A. Kind & Status Plug. Bond	21B. Drilling Contractor Salazar Bros. Drlg. Co.
22. Approx. Date Work will start 4/1/86		

PROPOSED CASING AND CEMENT PROGRAM

SIZE OF HOLE	SIZE OF CASING	WEIGHT PER FOOT	SETTING DEPTH	SACKS OF CEMENT	EST. TOP
12-1/4"	8-5/8"	24#	300'	350 sx	circ.
7-7/8"	4-1/2"	9.5#	4,200'	400 sx	

Posted 10-1
NL-APR
5-0-86

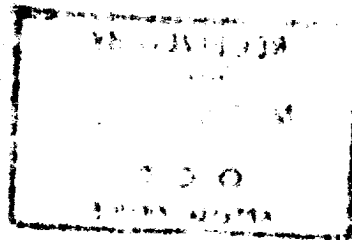
APPROVAL VALID FOR 180 DAYS
PERMIT EXPIRES 10-26-86
UNLESS DRILLING UNDERWAY

IN ABOVE SPACE DESCRIBE PROPOSED PROGRAM: IF PROPOSAL IS TO DEEPEN OR PLUG BACK, GIVE DATA ON PRESENT PRODUCTIVE ZONE AND PROPOSED NEW PRODUCTIVE ZONE. GIVE BLOWOUT PREVENTER PROGRAM, IF ANY.

I hereby certify that the information above is true and complete to the best of my knowledge and belief.

Signed BY: MAX WILSON, INC. Title President Date 3/17/86
(This space for State Use)

APPROVED BY Mike Williams TITLE Oil & Gas Inspector DATE APR 25 1986



W MEXICO OIL CONSERVATION COMM. ON
WELL LOCATION AND ACREAGE DEDICATION PLAT

Form C-102
Supersedes C-128
Effective 1-1-65

All distances must be from the outer boundaries of the Section.

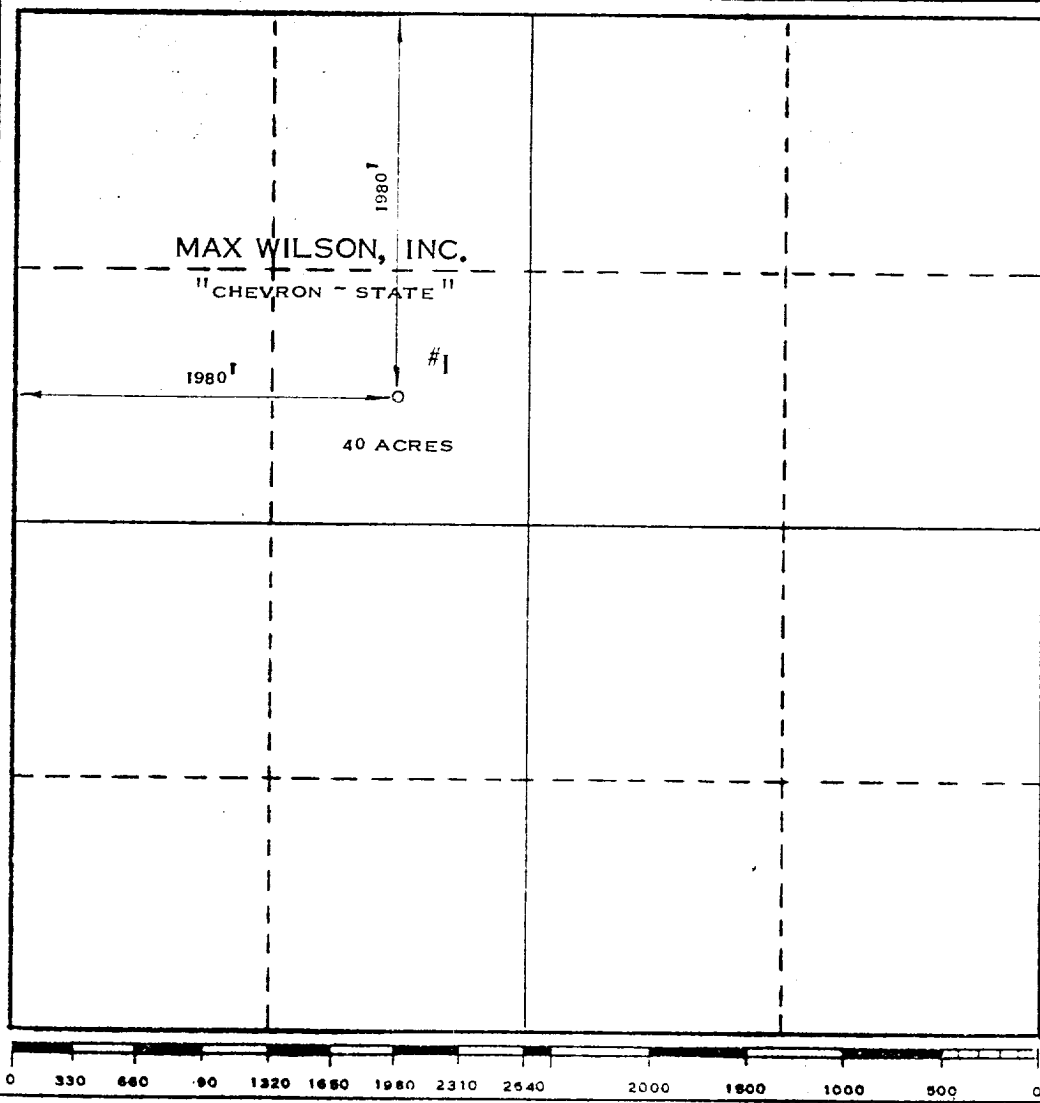
Operator MAX WILSON, INC.			Lease CHEVRON-STATE			Well No. 1		
Unit Letter "F"	Section II	Township 25-S	Range 27-E	County EDDY				
Actual Footage Location of Well:								
1980 feet from the NORTH line and			1980 feet from the WEST line					
Ground Level Elev. 3153	Producing Formation CHERRY CANYON			Pool WILDCAT			Dedicated Acreage: 40 Acres	

1. Outline the acreage dedicated to the subject well by colored pencil or machine marks on the plat below.
2. If more than one lease is dedicated to the well, outline each and identify the ownership thereof (both as to working interest and royalty).
3. If more than one lease of different ownership is dedicated to the well, have the interests of all owners been consolidated by communitization, unitization, force-pooling, etc. ☐ Yes ☐ No If answer is "yes," type of consolidation _____

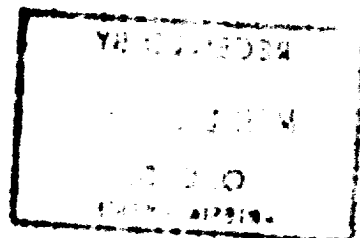
RECEIVED BY
MAR 31 1986
ARTESIA, OFFICE

If answer is "no," list the owners and tract descriptions which have actually been consolidated. (Use reverse side of this form if necessary.) _____

No allowable will be assigned to the well until all interests have been consolidated (by communitization, unitization, forced-pooling, or otherwise) or until a non-standard unit, eliminating such interests, has been approved by the Commission.



CERTIFICATION	
I hereby certify that the information contained herein is true and complete to the best of my knowledge and belief.	
Name <i>[Signature]</i>	Position President
Company Max Wilson, Inc.	
Date 3/17/86	
I hereby certify that the well location shown on this plat was plotted from field notes of actual surveys made by me or under my supervision, and that the same is true and correct to the best of my knowledge and belief.	
Date Surveyed MARCH 12, 1986	
Registered Professional Engineer and/or Land Surveyor <i>[Signature]</i> MAX A. SCHUMANN, JR.	
Certificate No. 1510	



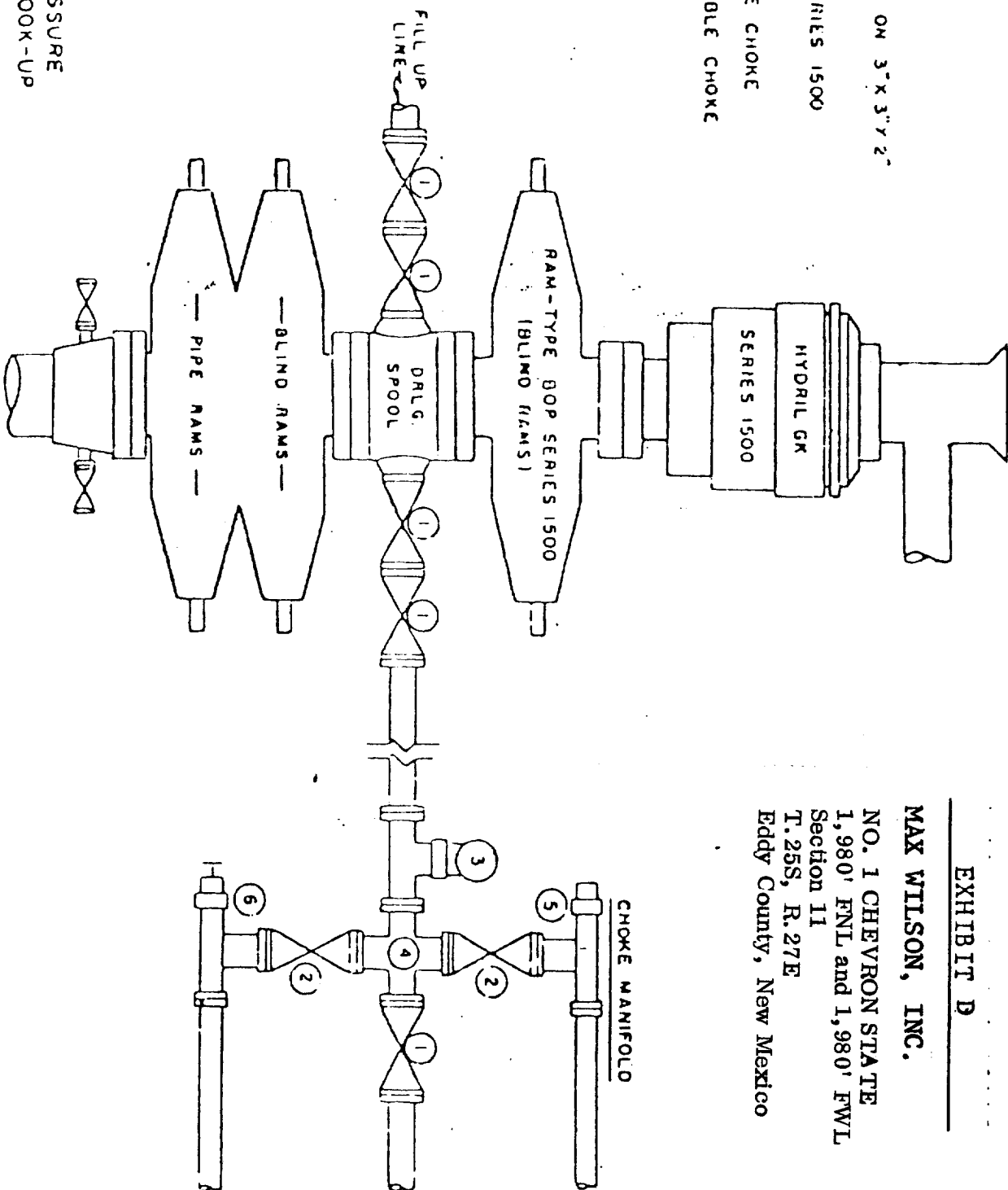
Blowout Preventer

EXHIBIT D

MAX WILSON, INC.

NO. 1 CHEVRON STATE
1,980' FNL and 1,980' FWL
Section 11
T.25S, R.27E
Eddy County, New Mexico

- ① 3" SERIES 1500 VALVE
- ② 2" SERIES 1500 VALVE
- ③ 2" MUD PRESSURE GAUGE ON 3" X 3" X 2" SERIES 1500 STEEL TEE
- ④ 3" SERIES 1500 X 2" SERIES 1500 STEEL CROSS
- ⑤ 2" SERIES 1500 POSITIVE CHOKE
- ⑥ 2" SERIES 1500 ADJUSTABLE CHOKE



5000 PSI WORKING PRESSURE
BLOWOUT PREVENTER HOOK-UP
(SERIES 1500 FLANGES OR BETTER)