

UNITED STATES  
DEPARTMENT OF THE INTERIOR  
BUREAU OF LAND MANAGEMENT

APPLICATION FOR PERMIT TO DRILL, DEEPEN, OR PLUG BACK

1a. TYPE OF WORK

DRILL ☒

DEEPEN ☐

PLUG BACK ☐

b. TYPE OF WELL

OIL  
WELL ☐

GAS  
WELL ☒

OTHER

SINGLE  
ZONE ☐

MULTIPLE  
ZONE ☐

2. NAME OF OPERATOR

HNG OIL COMPANY

3. ADDRESS OF OPERATOR

P. O. Box 2267, Midland, Texas 79702

4. LOCATION OF WELL (Report location clearly and in accordance with any State requirements.)

At surface  
1650' FSL & 1650' FEL

At proposed prod. zone  
1650' FSL & 1650' FEL

SEP 29 1986

14. DISTANCE IN MILES AND DIRECTION FROM NEAREST TOWN OR POST OFFICE

19 miles south from Carlsbad, NM

ARTESIA, OFFICE

15. DISTANCE FROM PROPOSED

LOCATION TO NEAREST  
PROPERTY OR LEASE LINE, FT. 1650'  
(Also to nearest drlg. unit line, if any)

16. NO. OF ACRES IN LEASE  
2560

17. NO. OF ACRES ASSIGNED  
TO THIS WELL  
640

18. DISTANCE FROM PROPOSED LOCATION\*  
TO NEAREST WELL, DRILLING, COMPLETED,  
OR APPLIED FOR, ON THIS LEASE, FT.

1980

19. PROPOSED DEPTH  
12,250'

20. ROTARY OR CABLE TOOLS  
Rotary

21. ELEVATIONS (Show whether DF, RT, GR, etc.)

3276.0' GR

22. APPROX. DATE WORK WILL START\*  
When permitted

23.

PROPOSED CASING AND CEMENTING PROGRAM

SIZE OF HOLE	SIZE OF CASING	WEIGHT PER FOOT	SETTING DEPTH	QUANTITY OF CEMENT
17-1/2"	13-3/8"	54.5#	400'	450 sacks circulated
12-1/4"	9-5/8"	40# & 36#	2000'	1200 sacks circulated
8-1/2"	7"	26#	9200'	1000 sacks
6-1/8"	4-1/2" Liner	13.5#	12250'	400 sacks

PRESSURE CONTROL PROGRAM:

Blow-out preventer and annular preventer with choke manifold and drill string safety valve will be installed at 9-5/8" casing point with equipment tested to 3000# W.P. Same BOP's will be installed at 7" casing point and all equipment will be tested to 5000# W.P.

Gas is dedicated.

IN ABOVE SPACE DESCRIBE PROPOSED PROGRAM: If proposal is to deepen or plug back, give data on present productive zone and proposed new productive zone. If proposal is to drill or deepen directionally, give pertinent data on subsurface locations and measured and true vertical depths. Give blowout preventer program, if any.

24.

SIGNED

Betty Gildon

TITLE Regulatory Analyst

DATE August 19, 1986

(This space for Federal or State office use)

PERMIT NO.

APPROVAL DATE

APPROVED BY

TITLE

DATE

CONDITIONS OF APPROVAL, IF ANY:

APPROVAL SUBJECT TO  
GENERAL REQUIREMENTS AND  
SPECIAL STIPULATIONS

\*See Instructions On Reverse Side

Title 18 U.S.C. Section 1001, makes it a crime for any person knowingly and willfully to make to any department or agency of the United States any false, fictitious or fraudulent statements or representations as to any matter within its jurisdiction.

NEW MEXICO OIL CONSERVATION COMMISSION  
WELL LOCATION AND ACREAGE DEDICATION PLAT

Form C-102  
Supersedes C-128  
Effective 1-1-65

All distances must be from the outer boundaries of the Section.

Operator <b>HNG Oil Company</b>			Lease <b>White City 14 Fed.</b>		Well No. <b>2</b>
Unit Letter <b>J</b>	Section <b>14</b>	Township <b>25 South</b>	Range <b>26 East</b>	County <b>Lea Eddy</b>	
Actual Footage Location of Well: <b>1650</b> feet from the <b>South</b> line and <b>1650</b> feet from the <b>East</b> line					
Ground Level Elev. <b>3276.0'</b>	Producing Formation <b>Morrow Penn</b>		Pool <b>Und</b> <b>White City Penn</b>		Dedicated Acreage: <b>640</b> Acres


1. Outline the acreage dedicated to the subject well by colored pencil or hachure marks on the plat below.
2. If more than one lease is dedicated to the well, outline each and identify the ownership thereof (both as to working interest and royalty).
3. If more than one lease of different ownership is dedicated to the well, have the interests of all owners been consolidated by communitization, unitization, force-pooling, etc?

**RECEIVED BY**  
**SEP 29 1986**  
**O. C. D.**  
**ARTESIA, OFFICE**

☐ Yes ☐ No If answer is "yes," type of consolidation \_\_\_\_\_

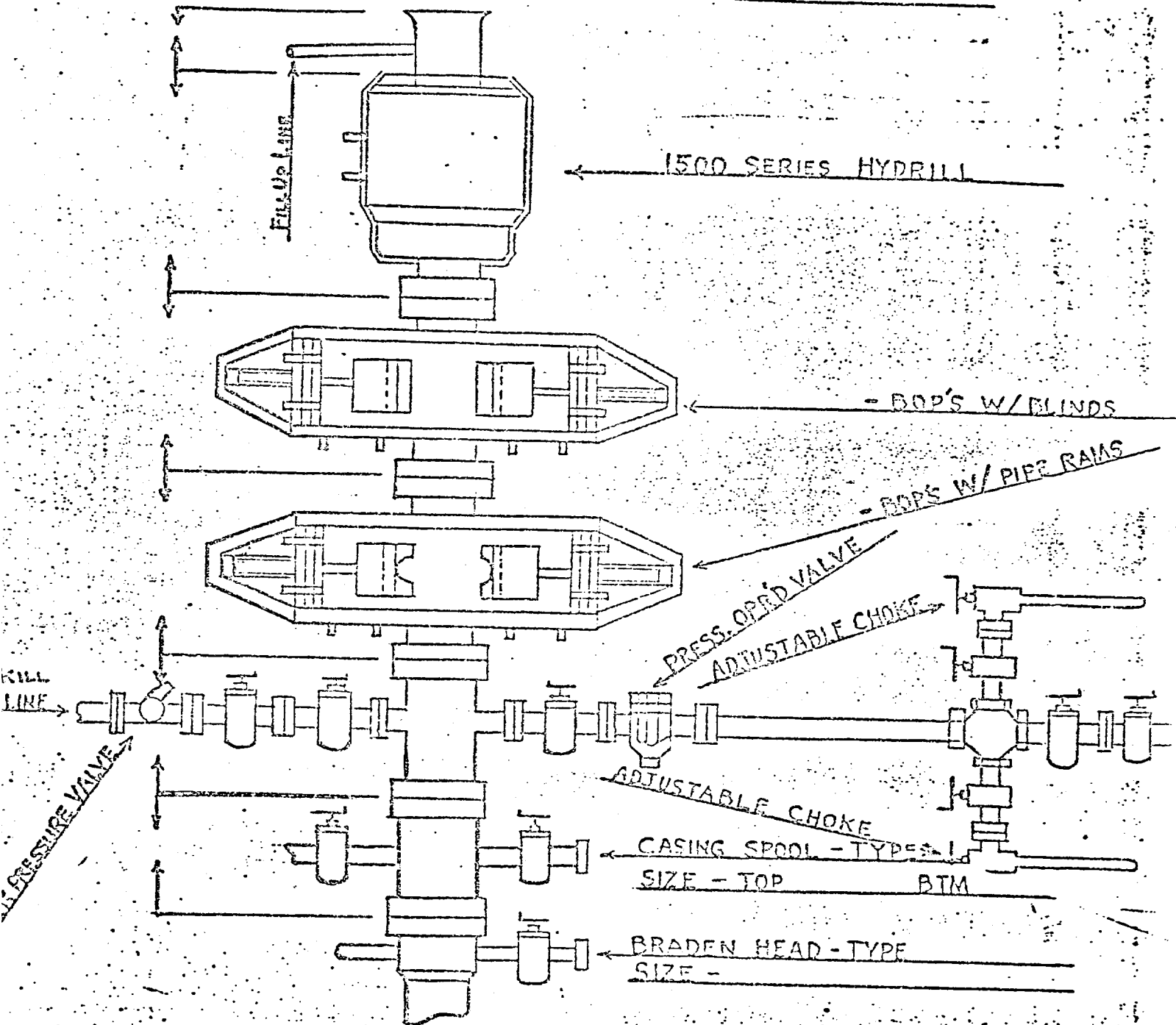
If answer is "no," list the owners and tract descriptions which have actually been consolidated. (Use reverse side of this form if necessary.) \_\_\_\_\_

No allowable will be assigned to the well until all interests have been consolidated (by communitization, unitization, forced-pooling, or otherwise) or until a non-standard unit, eliminating such interests, has been approved by the Commission.

<p>WI: Mesa Petroleum - 50%</p> <p>Peter Paul Petroleum - 9.375%</p> <p>HNG Oil Company - 40.625%</p> <p>RI: U. S. Government 1/8</p> <p>ORR: Central Southwest Oil Corp.</p> <p>Pension Trust - 3%</p> <p>Sunshine Company - 1%</p> <p>Robert N. Enfield - 1%</p>	
--	---

<b>CERTIFICATION</b>	
I hereby certify that the information contained herein is true and complete to the best of my knowledge and belief.	
<i>Betty Gildon</i>	
Name	<b>Betty Gildon</b>
Position	<b>Regulatory Analyst</b>
Company	<b>HNG OIL COMPANY</b>
Date	<b>August 5, 1986</b>
I hereby certify that the well location shown on this plat was plotted from field notes of actual surveys made by me or under my supervision, and that the same is true and correct to the best of my knowledge and belief.	
Date Surveyed	<b>July 29, 1986</b>
Registered Professional Engineer and/or Land Surveyor	
<i>John W. West</i>	
Certificate No.	<b>JOHN W. WEST, 676</b>
	<b>RONALD J. EIDSON, 3239</b>

DRILLER'S ZERO 12" ABOVE ROTARY TABLE



APPLICATION FOR PERMIT TO DRILL

1. The geologic surface formation is Alluvium/Castile.

2. The estimated tops of important geologic markers are:

1. <u>Delaware</u>	<u>1900</u>	6. <u>Strawn Lime</u>	<u>10600</u>
2. <u>Cherry Canyon</u>	<u>2800</u>	7. <u>Atoka</u>	<u>10700</u>
3. <u>Brushy Canyon</u>	<u>3400</u>	8. <u>Morrow Clastics</u>	<u>11400</u>
4. <u>Bone Springs</u>	<u>5500</u>	9. <u></u>	<u></u>
5. <u>Wolfcamp</u>	<u>8600</u>	10. <u></u>	<u></u>

3. Depths at which oil, water, or gas bearing formations are expected to be encountered.

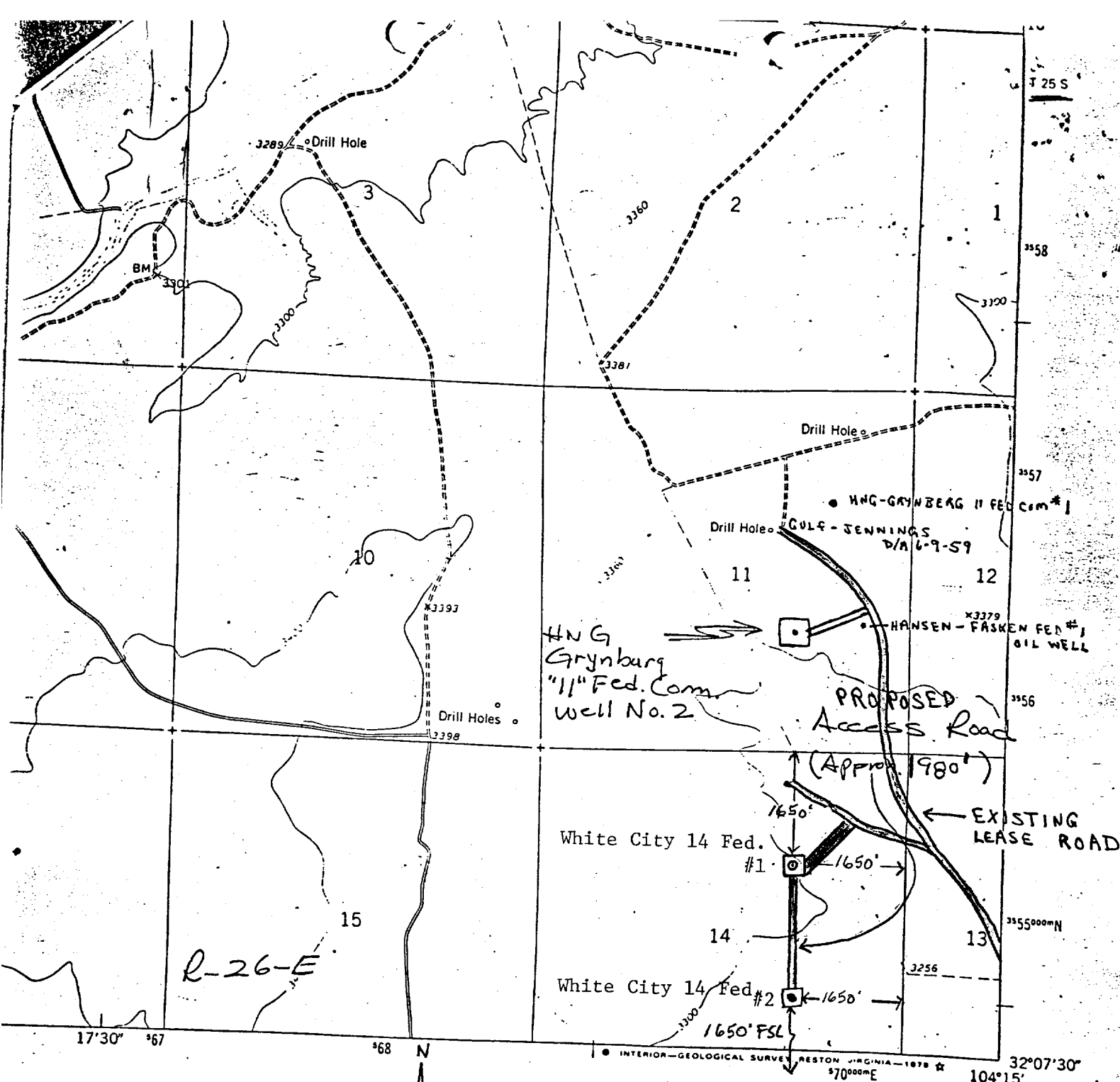
Morrow - 11,400' - 11,700'

4. Brief description of testing, logging, and coring programs.

DST as necessary  
Mud logger 1900 - TD  
GR Sonic - Surface-TD  
Neutron Density - 10200-TD  
Dual Laterolog or Dual Induction 1900-TD

5. Any anticipated abnormal pressures or temperatures expected? Any potential hazards - H2S?

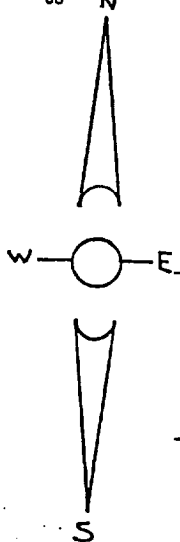
None



1 MILE  
1" = 2000'

EXISTING ROAD

PROPOSED ACCESS ROAD



ROAD CLASSIFICATION

Primary highway, hard surface	Light-duty road, hard or improved surface
Secondary highway, hard surface	Unimproved road
Interstate Route	U. S. Route
	State Route

BLACK RIVER VILLAGE, N. MEX.  
NE/4 CARLSBAD CAVERNS EAST 15' QUADRANGLE  
N3207.5-W10415/7.5

1979

DMA 5148 III NE-SERIES V881

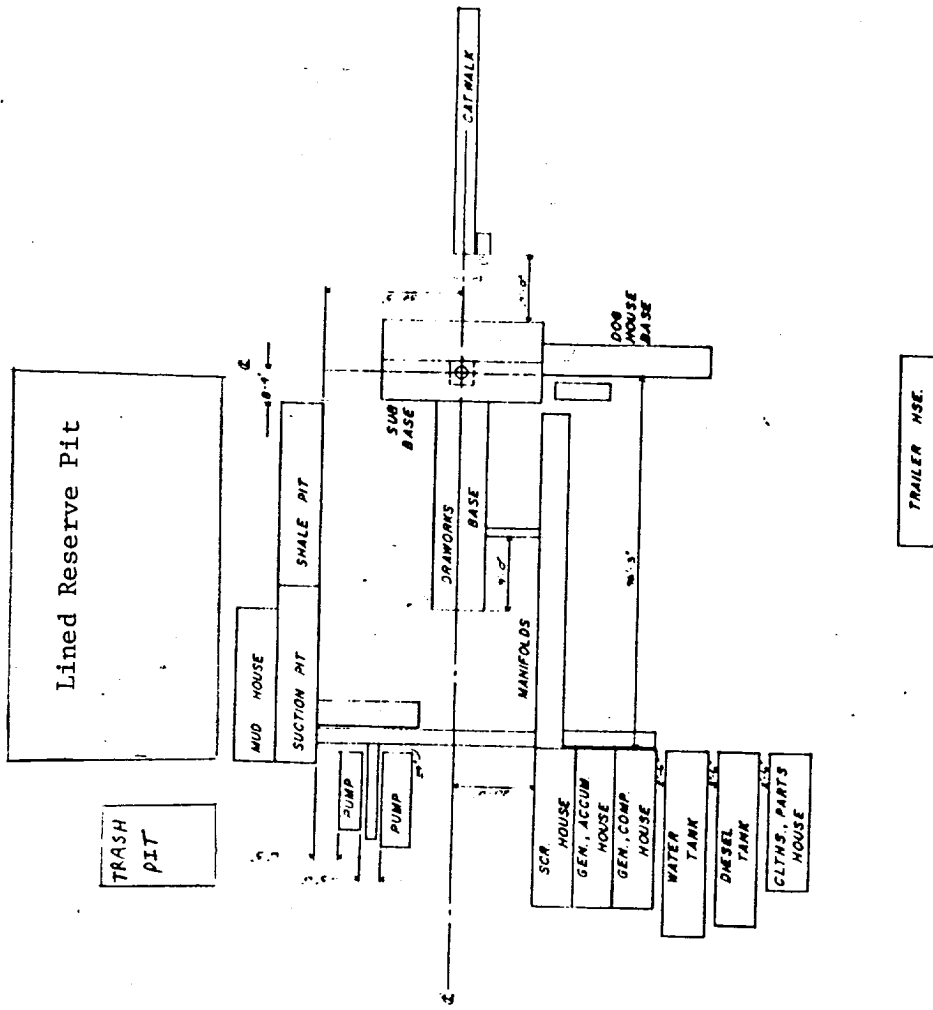
2092

EXHIBIT "A"

# RIG & LOCATION DIMENSIONS

CENTER HOLE TO BACK WATER TANK - 143.25'  
 " " " " SHALE PIT - 44.25'  
 " " " " END CATWALK - 92'  
 TOP OF KELLY BUSHING TO GROUND - 23.25'  
 SUGGESTED LOCATION PAD SIZE FROM C.  
 HOLE - 50' N., 150' E., 200' S., 200' W.

RAT HOLE      MOUSE HOLE  
 E-8.66'      E-45.5'  
 N-10.66'      1/2" slope  
 3 1/2" slope  
 N/O Cement Pad  
 23' Deep      13' Deep



PARKER DRILLING CO. WEST TEXAS DIVISION	
RIG PLAT	
RIG # 1	ORDER BY NUMBER
DATE 3-19-62	SCALE 1/2" = 1'