

REC. BY
OCT - 7 1986
CONSERVATION DIVISIC
P. O. BOX 2088
SANTA FE NEW MEXICO 87501
O. C. D.
ARTESIA, OFFICE

NO. OF COPIES RECEIVED	
DISTRIBUTION	
SANTA FE	
FILE	
U.S.G.S.	
LAND OFFICE	
OPERATOR	

5A. Indicate Type of Lease
STATE FEE

5. State Oil & Gas Lease No.
G-8794

APPLICATION FOR PERMIT TO DRILL, DEEPEN, OR PLUG BACK

1a. Type of Work

b. Type of Well DRILL DEEPEN PLUG BACK
OIL WELL GAS WELL OTHER SINGLE ZONE MULTIPLE ZONE

2. Name of Operator
Texaco Producing Inc.

3. Address of Operator
P. O. Box 728, Hobbs, New Mexico 88240

4. Location of Well * UNIT LETTER E LOCATED 330' FEET FROM THE South LINE
AND 380 FEET FROM THE West LINE OF SEC. 36 TWP. 26-S RGE. 29-E NMPM

19. Proposed Depth 5350' 19A. Formation Cherry Canyon 20. Rotary or C.T. Rotary

21. Elevations (show whether DF, KI, etc.) 2877' GR 21A. Kind & Status Plug. Bond Blanket 21B. Drilling Contractor _____ 22. Approx. Date Work will start 10/3/86

7. Unit Agreement Name _____

8. Farm or Lease Name
Salt Mountain
State "36" State

9. Well No. 2

10. Field and Pool, or Wildcat
Brushy Draw Delawar

12. County
Eddy

PROPOSED CASING AND CEMENT PROGRAM

SIZE OF HOLE	SIZE OF CASING	WEIGHT PER FOOT	SETTING DEPTH	SACKS OF CEMENT	EST. TOP
24"	20"	94#	40'	Redimix	Surface
15"	11-3/4"	42#	500'	500	Circulate
11"	8-5/8"	24#	2950'	1150	Circulate
7-7/8"	5-1/2"	15.5#	5350'	1350	Circulate

CEMENTING PROGRAM

CONDUCTOR CASING: Redimix

SURFACE CASING: 500 sxs Class "H" w/2% CaCl (15.6 ppg, 1.18 cu.ft./sx).

INTERMEDIATE CASING: 900 sxs Lite Weight w/15# salt and 1/4# flocele (12.7 ppg, 1.18 cu.f.t/sx.) followed by 250 sxs Class "H" w/1/4# flocele (15.6 ppg, 1.18 cu.ft./sx.).

PRODUCTION CASING: 1ST STAGE: 350 sxs Lite Weight w/1/4# flocele (12.7 ppg, 1.84 cu.ft./sx.) followed by 250 sxs Class "H" w/1/4# flocele (15.6 ppg, 1.18 cu.ft./sx.).

(Continued - See Page 2)

IN ABOVE SPACE DESCRIBE PROPOSED PROGRAM; IF PROPOSAL IS TO DEEPEN OR PLUG BACK, GIVE DATA ON PRESENT PRODUCTIVE ZONE AND PROPOSED NEW PRODUCTIVE ZONE. GIVE BLOWOUT PREVENTER PROGRAM, IF ANY.

I hereby certify that the information above is true and complete to the best of my knowledge and belief.
Signed L. J. Seeman Title District Petroleum Engr. Date 10-6-86

(This space for State Use)

APPROVED BY Original Signed By Mike Williams DATE OCT 7 1986
CONDITIONS OF APPROVAL, IF ANY Oil & Gas Inspector

SALT MOUNTAIN STATE "36" WELL NO. 2
EDDY COUNTY, NEW MEXICO

CEMENTING PROGRAM (continued)

PRODUCING CASING: 2ND STAGE: 500 sxs Lite Weight w/1/4# flocele (12.7 ppg, 1.84 cu.ft./sx.) followed by 250 sxs Class "H" w/1/4# flocele (15.6 ppg, 1.18 cu.ft./sx.). (DV Tool at 3600'.)

There are no other wells in this 1/4 - 1/4 Section.

*Due to complications in constructing the pad, this location had to be moved 50' east of the originally permitted location (approved 10-1-86). The location change is the only change from the previous application.

OIL CONSERVATION DIVISION

STATE OF NEW MEXICO
ENERGY AND MINERALS DEPARTMENT

P. O. BOX 2088
SANTA FE, NEW MEXICO 87501

Form C-102
Revised 10-1-78

All distances must be from the outer boundaries of the Section.

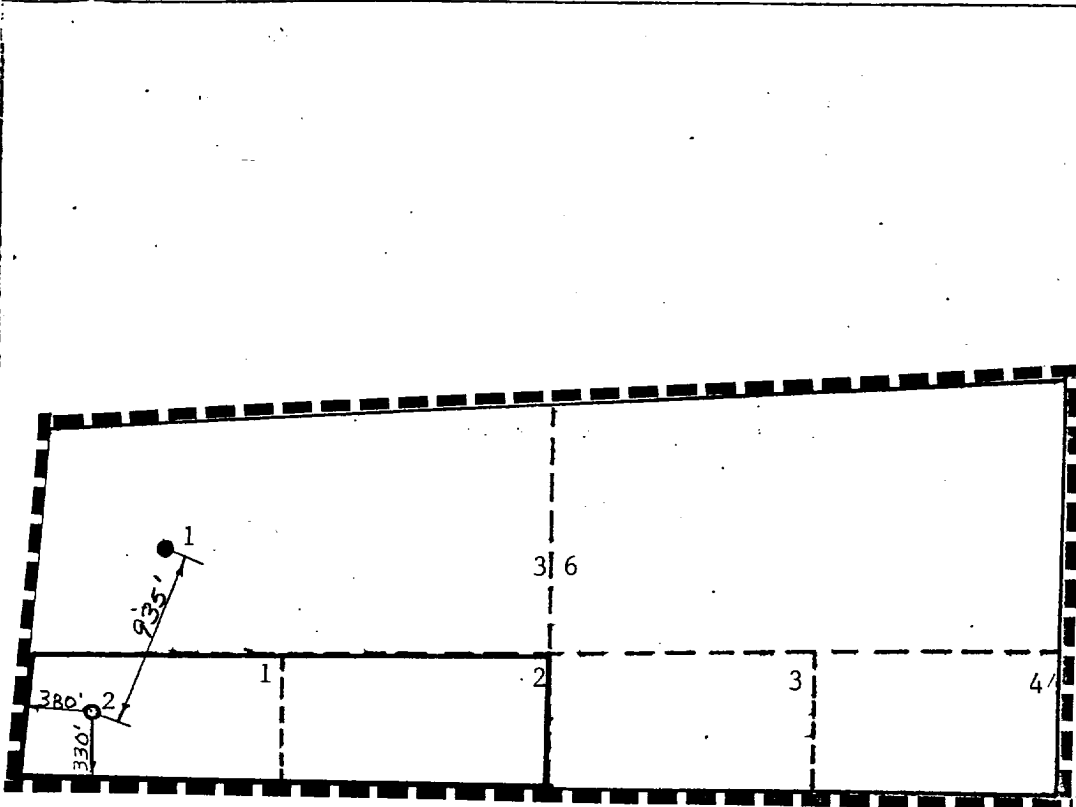
Operator TEXACO PRODUCING INC.		Lease SALT MOUNTAIN ST. "36"			Well No.
Unit Letter	Section 36	Township 26-S	Range 29-E	County EDDY	
Actual Postage Location of Well: 330 feet from the SOUTH line and 380 feet from the WEST line					
Ground Level Elev. 2877.	Producing Formation CHERRY CANYON		Pool BRUSHY DRAW DELAWARE	Dedicated Acreage: 44.04 Acres	

1. Outline the acreage dedicated to the subject well by colored pencil or hachure marks on the plat below.
2. If more than one lease is dedicated to the well, outline each and identify the ownership thereof (both as to working interest and royalty).
3. If more than one lease of different ownership is dedicated to the well, have the interests of all owners been consolidated by communitization, unitization, force-pooling, etc?

Yes No If answer is "yes," type of consolidation _____

If answer is "no," list the owners and tract descriptions which have actually been consolidated. (Use reverse side of this form if necessary.) _____

No allowable will be assigned to the well until all interests have been consolidated (by communitization, unitization, forced-pooling, or otherwise) or until a non-standard unit, eliminating such interests, has been approved by the Division.



CERTIFICATION

I hereby certify that the information contained herein is true and complete to the best of my knowledge and belief.

B. L. Eiland

Name B. L. Eiland
Position Division Surveyor
Company Texaco Producing Inc.
Date October 3, 1986

I hereby certify that the well location shown on this plot was plotted from field notes of actual surveys made by me or under my supervision, and that the same is true and correct to the best of my knowledge and belief.

REGISTERED LAND SURVEYOR

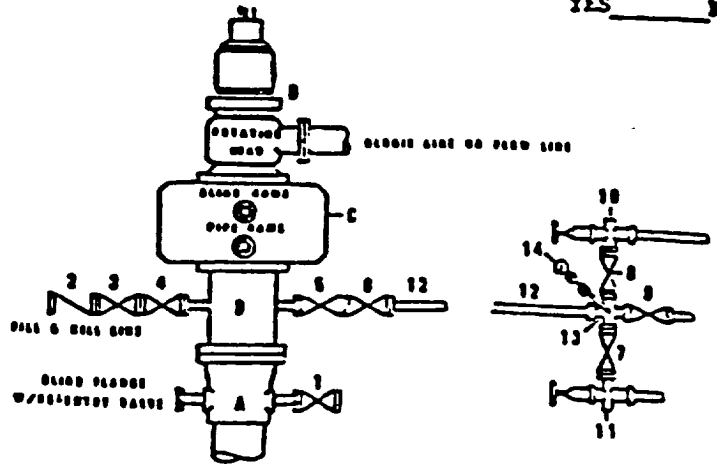
Date Surveyed
October 2, 1986

Registered Professional Engineer and Land Surveyor
B. L. Eiland

Certificate No. **4356**

**CONDITION II-B 3000 WP
FOR AIR DRILLING OR
WHERE YATES AIR BLOWS ARE EXPECTED**

H₂S TRIM REQUIRE
YES _____ NO _____



DRILLING CONTROL

MATERIAL LIST - CONDITION II - B
FOR AIR DRILLING

- A Texaco Wellhead
- B 3000# W.P. drilling spool with a 2" minimum flanged outlet for kill-line and 3" minimum flanged outlet for choke line
- C 3000# W.P. Dual ram type preventer, hydraulic operated with 1" steel, 3000# W.P. control lines (where sub-structure height is adequate, 2-3000# W.P. single ram type preventers may be utilized.)
- D Rotating Head and extended Choke Line.
- 1,3,4, 7,8 2" minimum 3000# W.P. flanged full opening steel gate valve, or Halliburton Le Torr Plug valve.
- 2 2" minimum 3000# W.P. back pressure valve
- 5,6,9 3" minimum 3000# W.P. flanged full opening steel gate valve, or Halliburton Le Torr Plug valve.
- 12 3" minimum schedule 80, Grade "B", seamless line pipe
- 13 2" minimum x 3" minimum 3000# W.P. flanged cross
- 10, 11 2" minimum 3000# W.P. adjustable choke bodies
- 14 Cameron Mud Clogs or equivalent (location optional in choke line.)

DATE	DATE	REV. NO.	DES. NO.	TEXACO, INC. PRODUCING DEPARTMENT (S) (REV) MIDLAND, TEXAS	
DRAWN BY				EXHIBIT C	
CHECKED BY					
APPROVED BY					