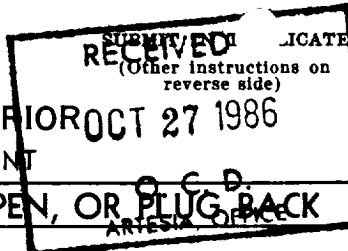


UNITED STATES
DEPARTMENT OF THE INTERIOR
BUREAU OF LAND MANAGEMENT



Form approved.
Budget Bureau No. 1004-0136
Expires August 31, 1985 2/56

APPLICATION FOR PERMIT TO DRILL, DEEPEN, OR PLUG BACK

1a. TYPE OF WORK

DRILL ☒

DEEPEN ☐

PLUG BACK ☐

b. TYPE OF WELL

OIL WELL ☒

GAS WELL ☐

OTHER

SINGLE ZONE ☒

MULTIPLE ZONE ☐

2. NAME OF OPERATOR

MALLON OIL COMPANY Kevin Fitzgerald (303) 572-1511

3. ADDRESS OF OPERATOR

2850 SECURITY LIFE BLDG., DENVER COLORADO 80202

4. LOCATION OF WELL (Report location clearly and in accordance with any State requirements.)
At surface

330' FNL AND 990' FWL OF SECTION 27

At proposed prod. zone

14. DISTANCE IN MILES AND DIRECTION FROM NEAREST TOWN OR POST OFFICE*

16 AIR MILES SOUTH-SOUTHEAST OF MALAGA, NEW MEXICO

10. DISTANCE FROM PROPOSED*
LOCATION TO NEAREST
PROPERTY OR LEASE LINE, FT.
(Also to nearest drig. unit line, if any)

330'

16. NO. OF ACRES IN LEASE

1318.02

17. NO. OF ACRES ASSIGNED
TO THIS WELL

40

13. DISTANCE FROM PROPOSED LOCATION*
TO NEAREST WELL, DRILLING, COMPLETED,
OR APPLIED FOR, ON THIS LEASE, FT.

1320'

19. PROPOSED DEPTH

5200'

20. ROTARY OR CABLE TOOLS

ROTARY

21. ELEVATIONS (Show whether DF, RT, GR, etc.)

2883.4' GL

22. APPROX. DATE WORK WILL START*

UPON APPROVAL

23.

PROPOSED CASING AND CEMENTING PROGRAM

SIZE OF HOLE	SIZE OF CASING	WEIGHT PER FOOT	SETTING DEPTH	QUANTITY OF CEMENT
12-1/4"	8-5/8"	24#	400'	SUFFICIENT TO CIRCULATE
7-7/8"	5-1/2"	14#	5200'	300 SACKS

AFTER SETTING PRODUCTION CASING, PAY ZONE WILL BE PERFORATED AND
STIMULATED AS NECESSARY.

SEE ATTACHED FOR: SUPPLEMENTAL DRILLING DATA
BOP SKETCH
SURFACE USE AND OPERATIONS PLAN
OPERATOR-LANDOWNER AGREEMENT

Posted ID-1
NL API
10-31-86

IN ABOVE SPACE DESCRIBE PROPOSED PROGRAM: If proposal is to deepen or plug back, give data on present productive zone and proposed new productive zone. If proposal is to drill or deepen directionally, give pertinent data on subsurface locations and measured and true vertical depths. Give blowout preventer program, if any.

24.

SIGNED

Arthur R. Brown

TITLE

Agent

DATE

October 15, 1986

(This space for Federal or State office use)

PERMIT NO.

APPROVAL DATE

APPROVED BY

TITLE

DATE

CONDITIONS OF APPROVAL, IF ANY:

APPROVAL SUBJECT TO
GENERAL REQUIREMENTS AND
SPECIAL STIPULATIONS

*See Instructions On Reverse Side

Title 18 U.S.C. Section 1001, makes it a crime for any person knowingly and willfully to make to any department or agency of the United States any false, fictitious or fraudulent statements or representations as to any matter within its jurisdiction.

NEW MEXICO OIL CONSERVATION COMMISSION
WELL LOCATION AND ACREAGE DEDICATION PLAT

Form C-102
Supersedes C-128
Effective 1-1-65

All distances must be from the outer boundaries of the Section

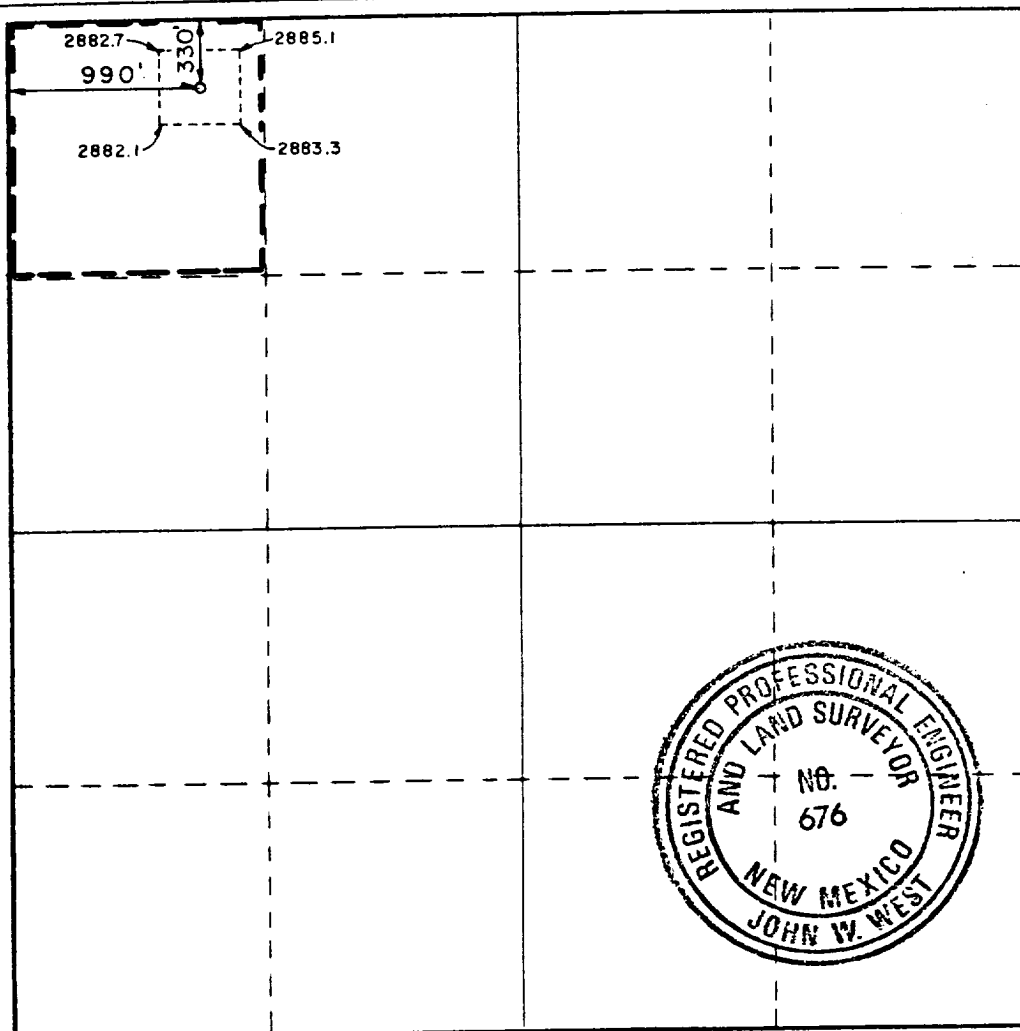
Operator Mallon Oil Company ✓			Lease Amoco Fed.		Well No. #11
Unit Letter D	Section 27	Township 26 South	Range 29 East	County Eddy	
Actual Footage Location of Well: 330 feet from the North line and 990 feet from the West line					
Ground Level Elev. 2883.4	Producing Formation DELAWARE		Pool UNDES. BRUSHY DRAW DELAWARE	Dedicated Acreage: 40 Acres	

1. Outline the acreage dedicated to the subject well by colored pencil or hachure marks on the plat below.
2. If more than one lease is dedicated to the well, outline each and identify the ownership thereof (both as to working interest and royalty).
3. If more than one lease of different ownership is dedicated to the well, have the interests of all owners been consolidated by communitization, unitization, force-pooling, etc?

☐ Yes ☐ No If answer is "yes," type of consolidation _____

If answer is "no," list the owners and tract descriptions which have actually been consolidated. (Use reverse side of this form if necessary.) _____

No allowable will be assigned to the well until all interests have been consolidated (by communitization, unitization, forced-pooling, or otherwise) or until a non-standard unit, eliminating such interests, has been approved by the Commission.



CERTIFICATION

I hereby certify that the information contained herein is true and complete to the best of my knowledge and belief.

Name: *Arthur R. Brown*
Position: Agent

Company: MALLON OIL COMPANY

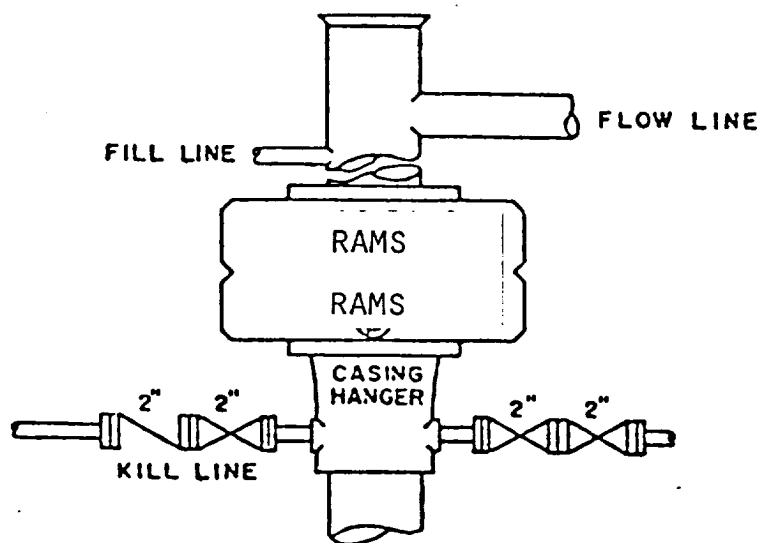
Date: OCTOBER 14, 1986

I hereby certify that the well location shown on this plat was plotted from field notes of actual surveys made by me or under my supervision, and that the same is true and correct to the best of my knowledge and belief.

Date Surveyed: October 13, 1986

Registered Professional Engineer and/or Land Surveyor

John W. West
Certificate No. JOHN W. WEST, 676
RONALD J. EIDSON, 3239



BOP STACK

3000 PSI WORKING PRESSURE

BOP ARRANGEMENT

SUPPLEMENTAL DRILLING DATA

MALLON OIL COMPANY WELL NO.11 AMOCO FEDERAL

1. SURFACE FORMATION: Quaternary.

2. ESTIMATED TOPS OF GEOLOGIC MARKERS:

Rustler Anhydrite	300'
Delaware	2870'
Bell Canyon	2900'
Cherry Canyon	3700'
Brushy Canyon	5150'

3. ANTICIPATED POSSIBLE HYDROCARBON BEARING ZONES:

Cherry Canyon	Oil
---------------	-----

4. PROPOSED CASING AND CEMENTING PROGRAM:

<u>CASING SIZE</u>	<u>SETTING DEPTH</u>		<u>WEIGHT</u>	<u>GRADE</u>	<u>JOINT</u>
	<u>FROM</u>	<u>TO</u>			
8-5/8"	0	400'	24#	K-55	STC
5-1/2"	0	5200'	14#	K-55	STC

8-5/8" casing will be cemented with approximately 250 sacks of Class "C" cement. Cement to circulate.

5-1/2" casing will be cemented with approximately 300 sacks of cement.

Equivalent or adequate grades and weights of casing may be substituted at time casing is run, depending on availability.

5. PRESSURE CONTROL EQUIPMENT:

A 3000 psi working pressure, double ram type preventer will be in use while drilling below the surface casing.

A BOP sketch is attached.

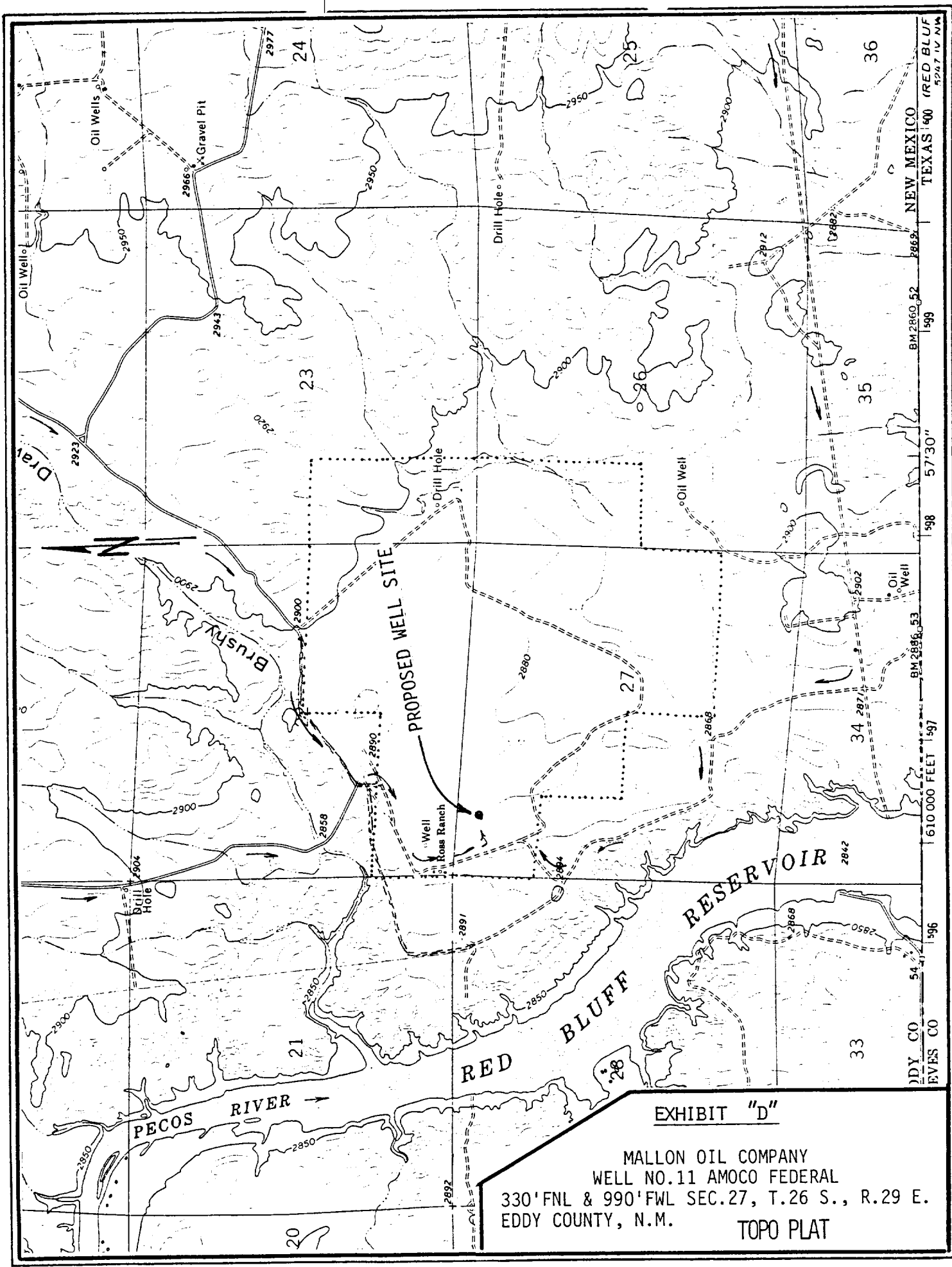


EXHIBIT "D"

MALLON OIL COMPANY
WELL NO. 11 AMOCO FEDERAL
330' FNL & 990' FWL SEC. 27, T. 26 S., R. 29 E.
EDDY COUNTY, N.M.
TOPO PLAT

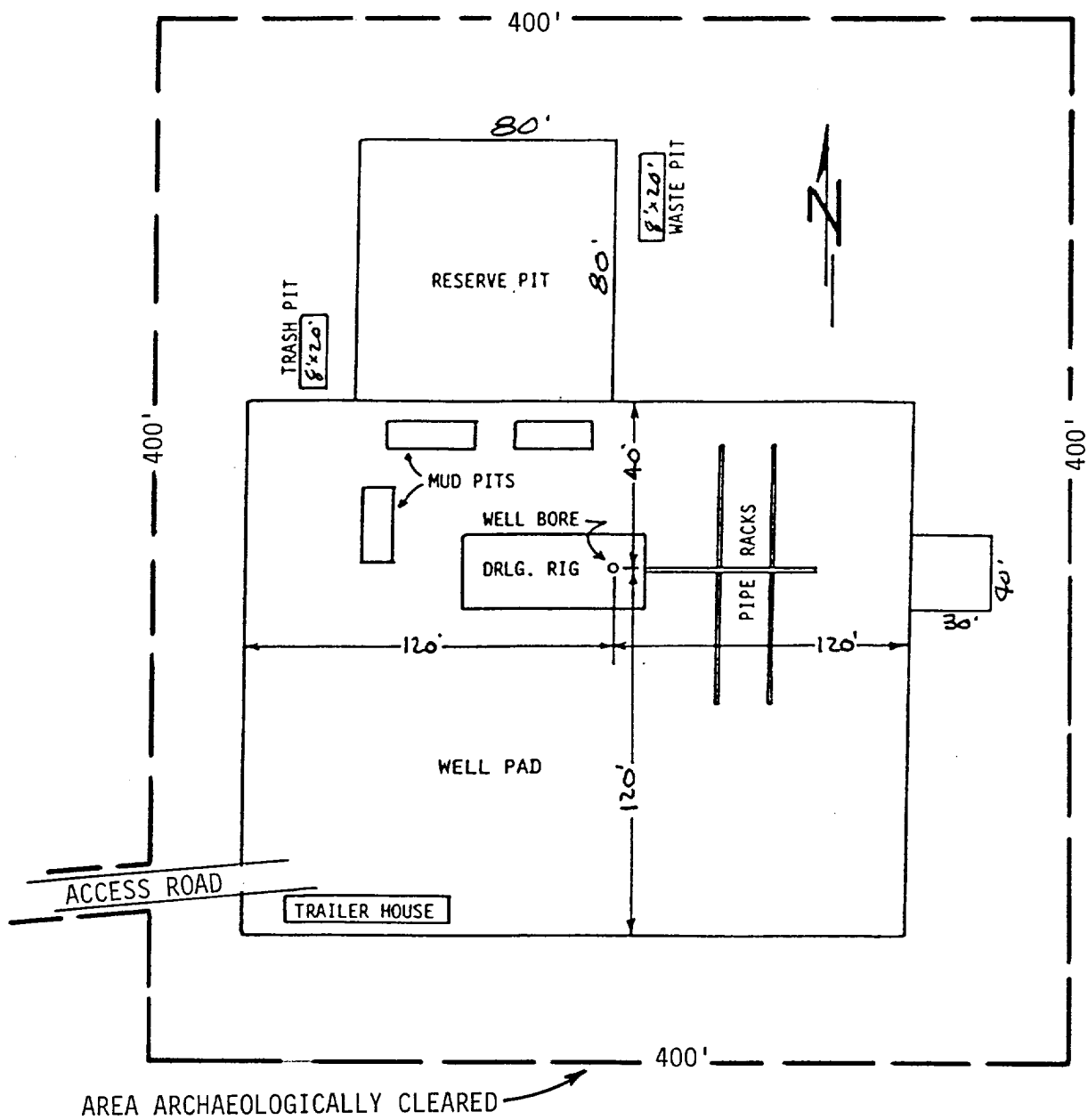


EXHIBIT "C"

MALLON OIL COMPANY
WELL NO.11 AMOCO FEDERAL

DRILLING RIG LAYOUT
SCALE: None