

C/SF



# United States Department of the Interior

## BUREAU OF LAND MANAGEMENT

Box 1397, Roswell, New Mexico 88201

IN REPLY  
REFER TO (042)

APR 10 1985

Carlson, E. Grace  
P.O. Box 11/18  
Carlson, NM 88220

Gentlemen:

Your application for Permit to Drill and to a Crane-Schoenberger Federal in the NPSB sec. 15, T. 24 S., R. 30E., Sddy County, New Mexico, Lease NM-19250, to a depth of 7,400 feet to test the Delaware formation in the oil-potash area, is hereby approved as amended by stipulations attached to the application.

One copy of the application is returned herewith. Please notify the Bureau of Land Management office checked on the attached special stipulation, in sufficient time for a representative to witness all cementing operations.

Sincerely,

(ORIG. SGD.) JOE G. LARA

FOR

Francis R. Cherry, Jr.  
District Manager

Enclosure  
NM-643B-1  
NMOCD - 2 ✓

# United States Department of the Interior

## BUREAU OF LAND MANAGEMENT

Washington, D. C. 20250



OFFICE OF THE  
DIRECTOR

THIS COPY FOR THE

BY

30-015-25709  
C/S

UNITED STATES  
DEPARTMENT OF THE INTERIOR  
BUREAU OF LAND MANAGEMENT

APPLICATION FOR PERMIT TO DRILL, DEEPEN, OR PLUG BACK

1a. TYPE OF WORK

DRILL ☒

DEEPEN ☐

PLUG BACK ☐

b. TYPE OF WELL

OIL  
WELL ☒

GAS  
WELL ☐

OTHER

2. NAME OF OPERATOR

Corinne B. Grace

3. ADDRESS OF OPERATOR

P.O. Box 1418, Carlsbad, New Mexico 88220

4. LOCATION OF WELL (Report location clearly and in accordance with any State requirements.)

At surface

2150' FSL & 660' FEL, NE/4 SE/4, Unit letter I

At proposed prod. zone

Same

14. DISTANCE IN MILES AND DIRECTION FROM NEAREST TOWN OR POST OFFICE\*

14 air miles east of Malaga, New Mexico

16. DISTANCE FROM PROPOSED\*

LOCATION TO NEAREST  
PROPERTY OR LEASE LINE, FT.  
(Also to nearest drlg. unit line, if any)

660'

18. DISTANCE FROM PROPOSED LOCATION\*

TO NEAREST WELL, DRILLING, COMPLETED,  
OR APPLIED FOR, ON THIS LEASE, FT.

N/A

21. ELEVATIONS (Show whether DF, RT, GR, etc.)

3505' GL

23.

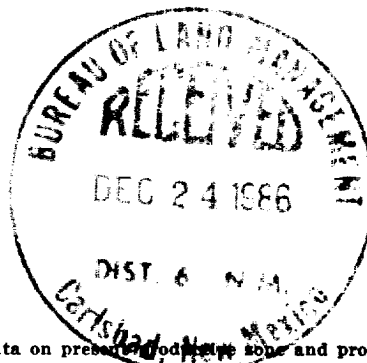
PROPOSED CASING AND CEMENTING PROGRAM

SIZE OF HOLE	SIZE OF CASING	WEIGHT PER FOOT	SETTING DEPTH	QUANTITY OF CEMENT
26.0"	20.0"	94.0#	50'	Redi-mix to surface
17 1/2"	13 3/8"	54.0#	400'	Circulate to surface
11.0"	8 5/8"	24 & 32#	4100'	Circulate to surface
7 7/8"	5 1/2"	17.0#	7400'±	Circulate to surface

Proposed plans are to drill to the Delaware formation and test for possible commercial production of oil and gas.

B.O.P sketch is attached.

LEASE EXPIRES JANUARY 1, 1987.



Posted ID-1  
NL, APF  
1-9-87

IN ABOVE SPACE DESCRIBE PROPOSED PROGRAM: If proposal is to deepen or plug back, give data on present productive zone and proposed new productive zone. If proposal is to drill or deepen directionally, give pertinent data on subsurface locations and measured and true vertical depths. Give blowout preventer program, if any.

24.

SIGNED Larry W. Franklin TITLE Agent DATE December 23, 1986

(This space for Federal or State office use)

PERMIT NO. \_\_\_\_\_ APPROVAL DATE \_\_\_\_\_

APPROVED BY \_\_\_\_\_ TITLE \_\_\_\_\_ DATE \_\_\_\_\_

CONDITIONS OF APPROVAL, IF ANY:

\*See Instructions On Reverse Side

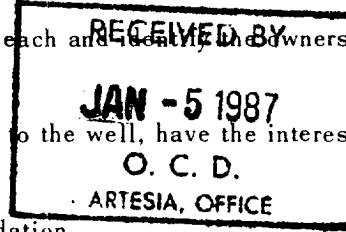
N MEXICO OIL CONSERVATION COMMIS. N  
WELL LOCATION AND ACREAGE DEDICATION PLAT

Form C-102  
Supersedes C-128  
Effective 1-1-65

All distances must be from the outer boundaries of the Section.

Operator <b>CORINNE B. GRACE</b> ✓			Lease <b>Grace-Schoenberger Federal</b>		Well No. <b>1</b>
Unit Letter <b>I</b>	Section <b>13</b>	Township <b>24 South</b>	Range <b>30 East</b>	County <b>Eddy</b>	
Actual Footage Location of Well: <b>2150</b> feet from the <b>South</b> line and <b>660</b> feet from the <b>East</b> line					
Ground Level Elev. <b>3505.</b>	Producing Formation <b>Delaware</b>		Pool <b>Wildcat</b>		Dedicated Acreage: <b>40</b> Acres

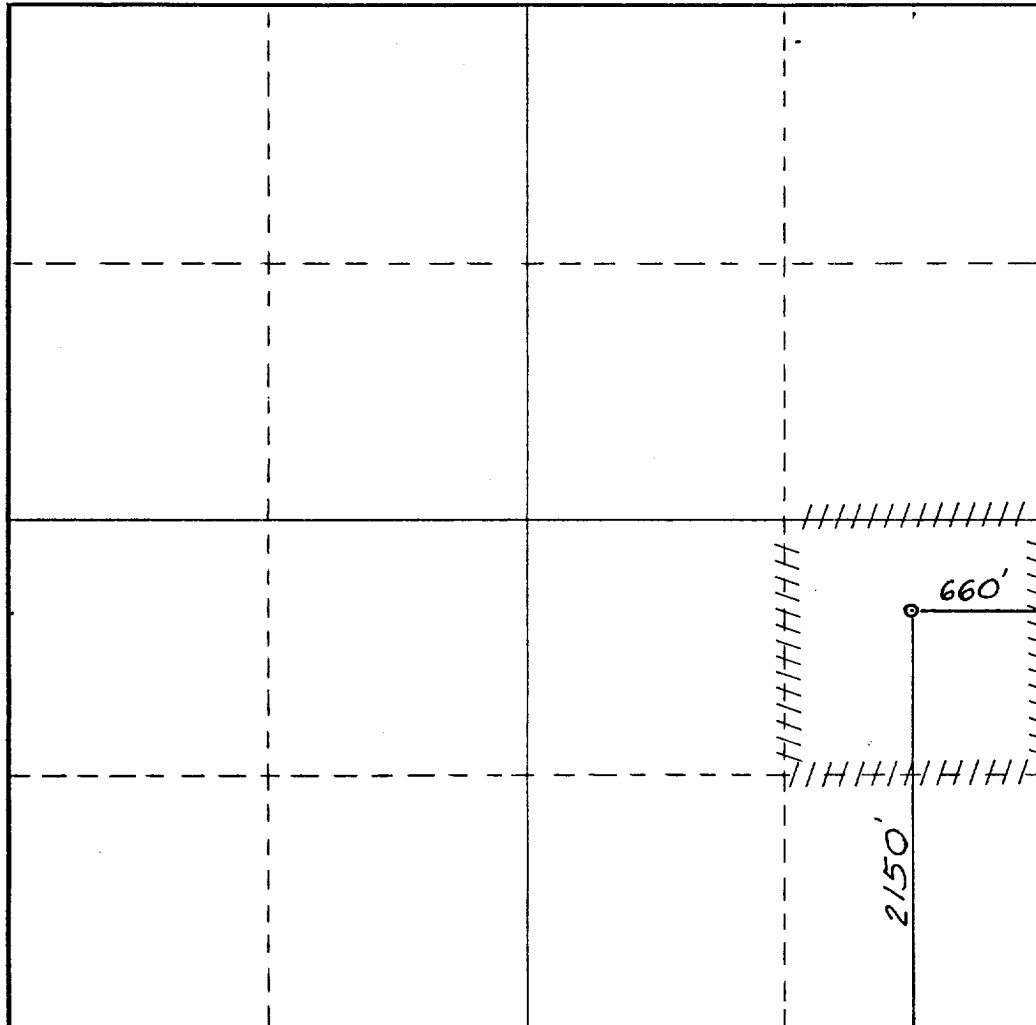
1. Outline the acreage dedicated to the subject well by colored pencil or hachure marks on the plat below.
2. If more than one lease is dedicated to the well, outline each and identify the ownership thereof (both as to working interest and royalty).
3. If more than one lease of different ownership is dedicated to the well, have the interests of all owners been consolidated by communitization, unitization, force-pooling, etc?



☐ Yes ☐ No If answer is "yes," type of consolidation \_\_\_\_\_

If answer is "no," list the owners and tract descriptions which have actually been consolidated. (Use reverse side of this form if necessary.) \_\_\_\_\_

No allowable will be assigned to the well until all interests have been consolidated (by communitization, unitization, forced-pooling, or otherwise) or until a non-standard unit, eliminating such interests, has been approved by the Commission.



**CERTIFICATION**

I hereby certify that the information contained herein is true and complete to the best of my knowledge and belief.

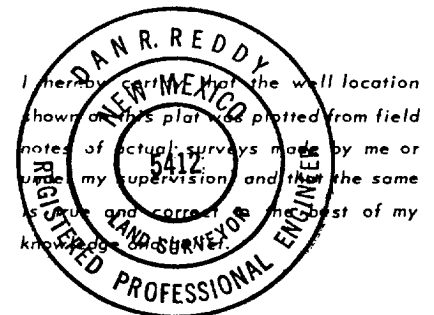
*Terry W. Franklin*  
Name

**Terry W. Franklin**  
Position

**Agent**  
Company

**Corinne B. Grace**  
Date

**12/24/86**



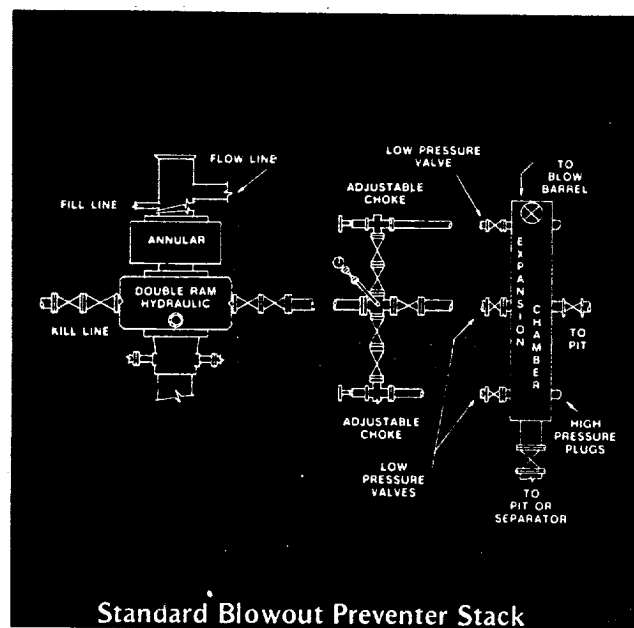
Date Surveyed

**December 23, 1986**

Registered Professional Engineer  
and/or Land Surveyor

*Dan R. Reddy*  
Certificate No.

**NM PE&LS NO. 5412**



## SUPPLEMENTAL DRILLING DATA

Corinne B. Grace  
Grace-Schoenberger Federal No. 1  
2150' FSL & 660' FEL  
Sec. 13, T24S, R30E  
Eddy County, N.M.  
NM-29230

The following information is in accordance with 'Onshore Oil and Gas Order' No. 1:

1. Geologic Name of Surface Formation: Recent

2. Estimated Geological Marker Tops:

B/Salt	3970'	Cherry Canyon	5130'
Lamar	4205'	Manzanita	5260'
Ramsey	4255'	Brushy Canyon	6360'

3. Estimated Depths to Oil, Gas and Water:

Water: Approximately 280'  
Oil & Gas: 5150-6900'

4. Proposed Casing and Cement Program:

Surface Casing - Set approximately 400', 13 3/8", 54.0#, J-55, ST&C casing. Cement to surface with 250 sx Class 'C' cement.

Intermediate Casing - Set approximately 4100', 8 5/8", 24 & 32#, K-55, ST&C casing. Cement to surface with 1600 sx Class 'C' cement.

Production Casing - Set to total depth, 5 1/2", 17.0#, K-55, ST&C casing. Cement to surface with approximately 1200 sx of cement.

5. Proposed Mud Program:

0 - 400' Native mud, adding fresh water gel as needed.

400 - 4100' Brine system. Contro pH with Caustic Soda.

4100 - 7400' Cut brine system, 9.0-9.2#/gal. Viscosity 32-34, water loss 10cc.

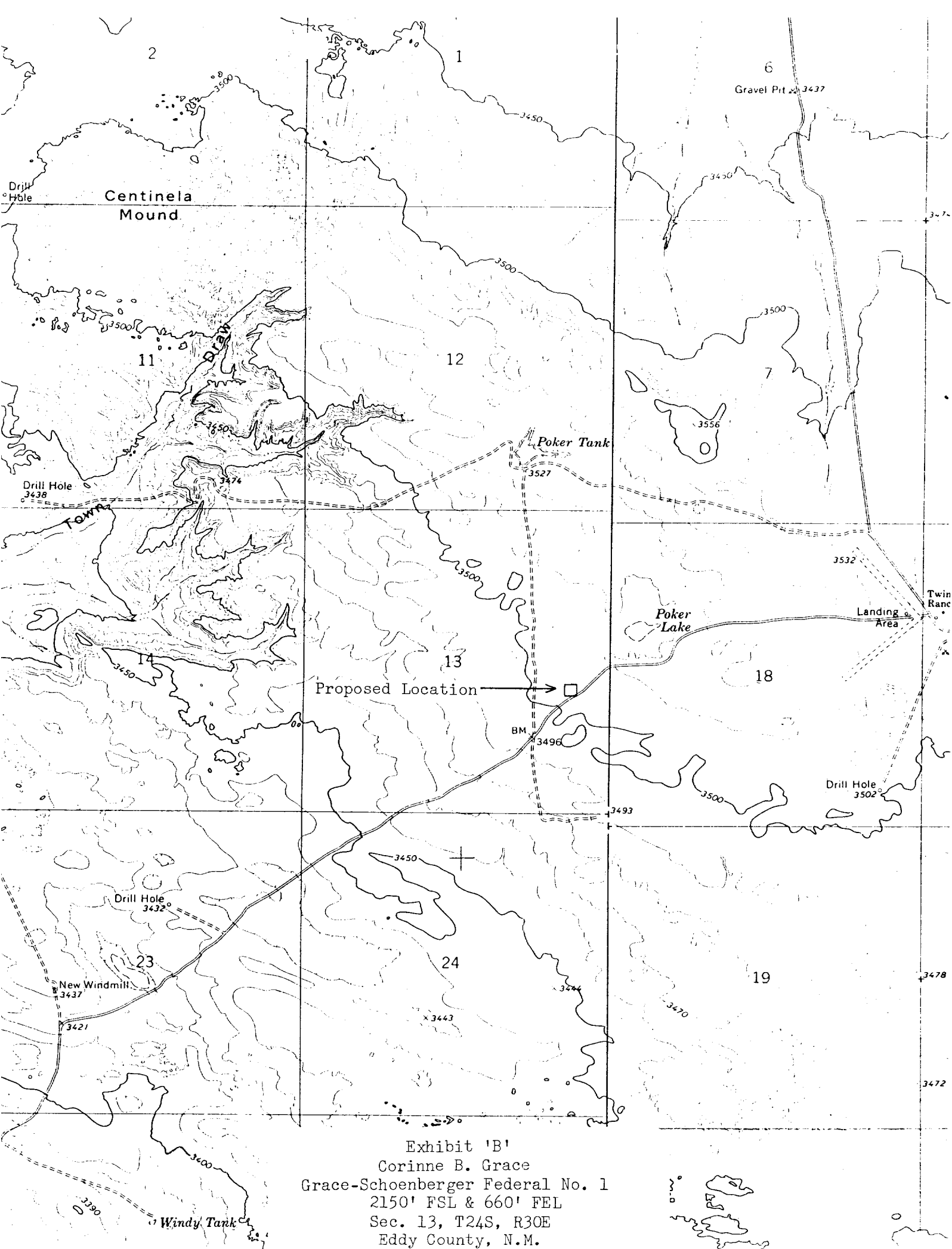


Exhibit 'B'  
Corinne B. Grace  
Grace-Schoenberger Federal No. 1  
2150' FSL & 660' FEL  
Sec. 13, T24S, R30E  
Eddy County, N.M.

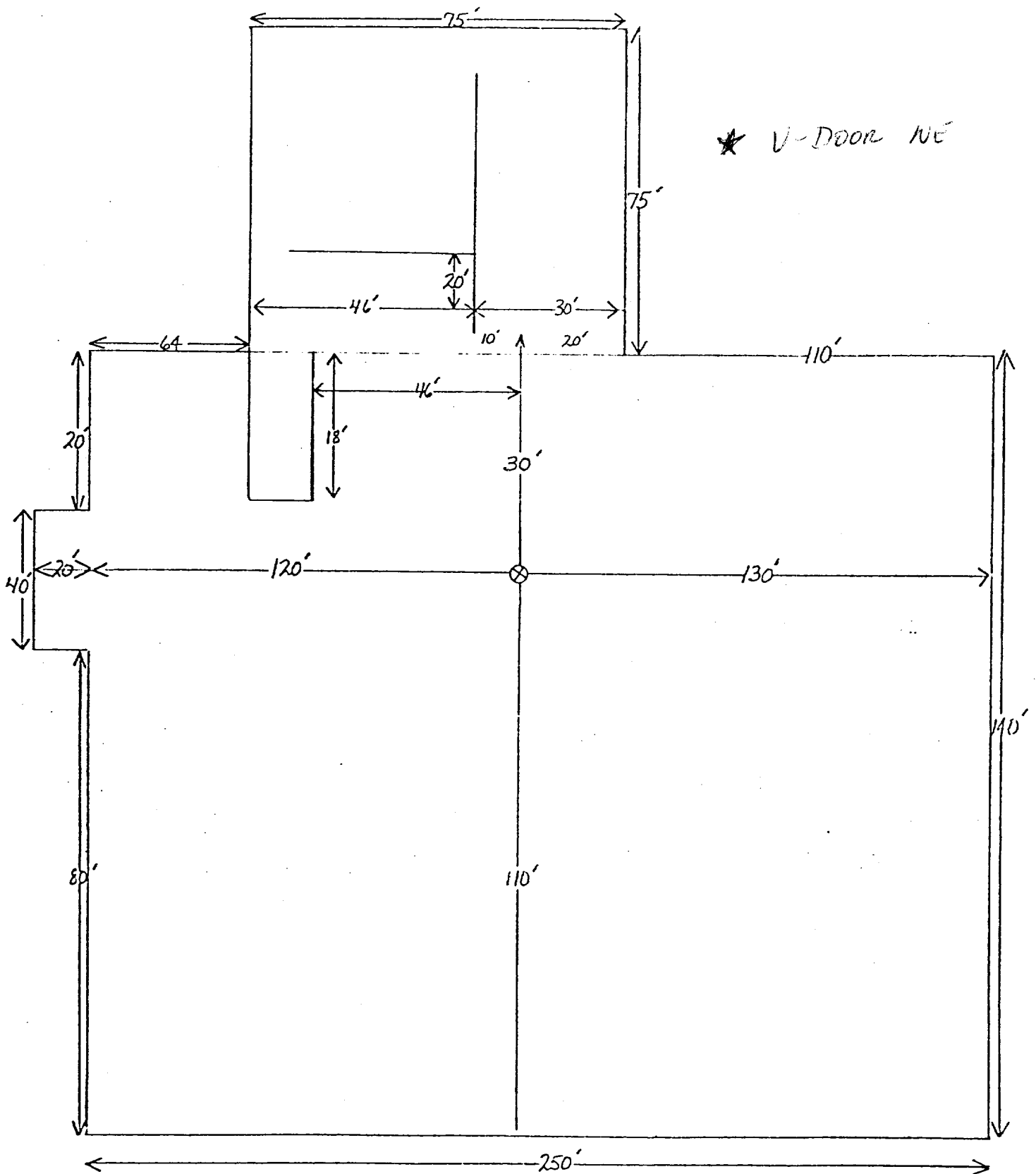


Exhibit 'C'  
 Corinne B. Grace  
 Grace-Schoenberger Federal No. 1  
 2150' FSL & 660' FEL  
 Sec. 13, T24S, R30E  
 Eddy County, N.M.